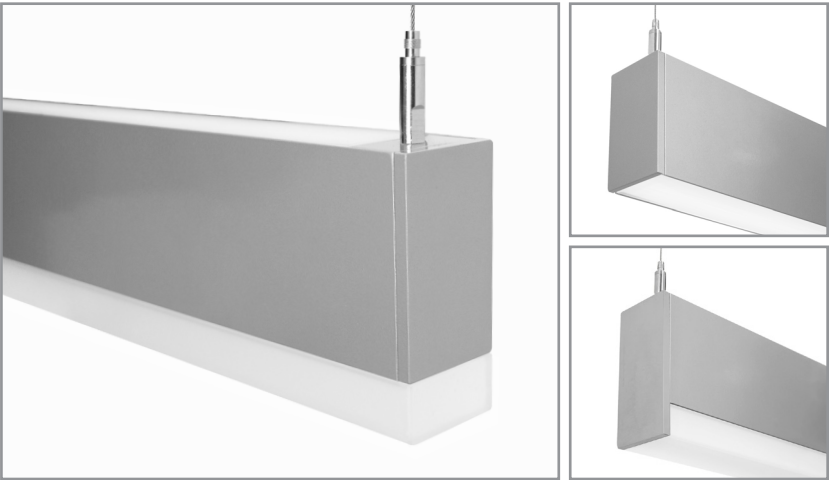


BSS255 | **bodhi**

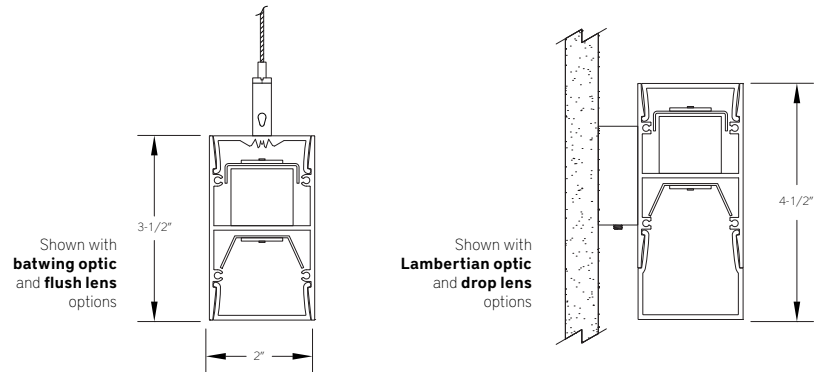
2" wide direct/indirect LED luminaire



Project: _____ Type: _____



SECTION



PERFORMANCE

| NOMINAL LENGTH | OPTIC CONFIGURATION | OUTPUT | LUMENS/ft. | WATTS/ft. | LUMINAIRE LUMENS | EFFICACY (LPW) |
|----------------|--------------------------------|------------|------------|-----------|------------------|----------------|
| 4' | Indirect – Lambertian | L: low | 465 | 5.0 | 1738 | 93 |
| | | R: regular | 600 | 7.2 | 2257 | 84 |
| | Indirect – batwing | L: low | 570 | 5.7 | 2112 | 100 |
| | | R: regular | 740 | 7.9 | 2743 | 94 |
| | Direct – flush lens | L: low | 470 | 5.0 | 1755 | 94 |
| | | R: regular | 610 | 7.2 | 2279 | 85 |
| | Direct – drop lens, solid end | L: low | 500 | 5.0 | 1850 | 99 |
| | | R: regular | 650 | 7.2 | 2402 | 90 |
| | Direct – flush lens, wall wash | L: low | 580 | 5.4 | 2155 | 108 |
| | | R: regular | 790 | 7.6 | 2933 | 103 |

Note: All data reflects fixtures with 3500K LEDs.

FEATURES

The Bodhi series BSS255 a rectilinear direct/indirect LED luminaire for general lighting applications. The 2" wide by 3-½" high extruded aluminum housing is offered for wall or cable suspended mounting. The two LED sources can be configured independently for both switching and lumen output. The BSS255 is Controls Capable, being offered with a variety of integrated control options.

SPECIFICATIONS

Fixture constructed of extruded aluminum housing, extruded acrylic lenses and machined aluminum end caps.

Model variations offered for wall mount and cable suspended applications.

Indirect optic options include Lambertian or batwing distributions while direct options include flush and drop frosted lenses, acrylic Fresnel wall wash lens (for cable mount fixtures) and flat blade louver.

Standard finishes as shown below.

Available in nominal lengths of 2'–8' single fixtures and continuous runs.

Basic continuous run fixtures provided with 18 ga. wiring harness for 6 Amp maximum load (consult factory for runs requiring multiple circuits, sensor integration, etc.).

Standard integral 120-277V driver offered with 0-10V dimming or non-dim (other dimming driver options available).

Integral 120-277V emergency battery backup available for 4' or 8' nominal, single circuit non-dim or 0-10V (consult factory for all other lengths/drivers).

Standard light outputs range from 470 – 790 lumens per foot for the direct source and 460 – 740 lumens per foot for the indirect source, depending on optic options.

LEDs available in 2700K, 3000K, 3500K and 4000K, within a 3 step MacAdam ellipse, all with 90+ CRI typical.

Bartco Lighting Controls Capable fixture available with integrated controls from a variety of suppliers.

Life: 50,000 hours L₇₀.

Limited five year warranty.

UL and C-UL listed for dry and damp locations.



BSS255 | bodhi

2" wide direct/indirect LED luminaire

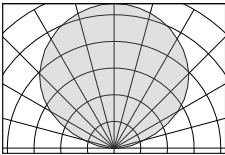
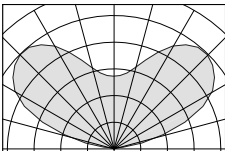
BSS255 -

| NOMINAL FIXTURE LENGTH* | CORRELATED COLOR TEMPERATURE | CIRCUIT | DIRECT LIGHT OUTPUT | DIRECT OPTIC | RUN CON- FIGURATION | FINISH |
|--|--|--|---|---|--|--|
| 2: 22-5/8" 3: 33-5/8" 4: 44-5/8" 5: 55-5/8" 6: 66-5/8" 7: 77-5/8" 8: 88-5/8" | 27: 2700K-90+ CRI 30: 3000K-90+ CRI 35: 3500K-90+ CRI 40: 4000K-90+ CRI | 1: single circuit 2: two circuit (4' nom. length and longer) | (lumens per foot w/optic option B) L: low – 500 R: regular – 650 CF: consult factory for custom output | A: flush lens B: drop lens – solid end C: drop lens – luminous end D: louver E: wall wash | SN: single ST: starter AD: adder TR: terminator | AW: architectural white (semi-matte) WH: white (semi- gloss) BL: black (semi- matte) MB: matte black ESS: environmental satin silver BZ: bronze PR: primer CF: consult factory for custom finish SA: satin anodize (may require addi- tional lead time) |
| | DRIVER ND: non-dimming [Dimming] D: 0-10V, 1% DTR: triac, 1%, (120V ONLY) DLV: electronic low volt- age, 1%, (120V ONLY) HES: Lutron EcoSystem, soft-on/fade-to-black, 1% EL: eldoLED ECOdrive 0-10V, 1% ES: eldoLED SOLOdrive 0-10V, 0.1% ELD: eldoLED ECOdrive DALI, 1% ESD: eldoLED SOLOdrive DALI, 0.1% | INDIRECT LIGHT OUTPUT (lumens per foot w/ optic option 1) L: low – 465 R: regular – 600 CF: consult factory for custom output | INDIRECT OPTIC 1: general Lambertian distribution 2: batwing distribution | MOUNT WM: wall mount C4: cable mount 4' cable length C8: cable mount 8' cable length CF: consult factory for custom mounting | OPTIONS ED: emergency driver (4' or 8' non-dim or 0-10V only) WS1A: Wattstopper FS-205, 100%-0% ‡ WS1B: Wattstopper FS-205, 100%-50% ‡ ES4: Philips EasySense SNS211 MC ‡ CA1: Casambi CBU-A2D ‡ NL1: nLight RES7 ‡ NL2: nLight RIO ‡ LA1: Lutron Athena A-WN- D01-RF-WH ‡ LA2: Lutron Athena A-WN- D01-OCC-WH ‡ | |

* Actual dimension dependent on mounting and run configuration.

‡ See Integrated Controls section for driver compatibility information.




INDIRECT OPTIC

| | ORDERING CODE | DESCRIPTION | SPECIFICATIONS |
|---|---------------|-------------------------|---|
|  | 1 | LAMBERTIAN DISTRIBUTION | Frosted extruded acrylic lens for Lambertian distribution. |
|  | 2 | BATWING DISTRIBUTION | Clear extruded acrylic with wide distribution optic features. |

BSS255 | **bodhi**

2" wide direct/indirect LED luminaire

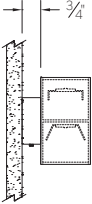
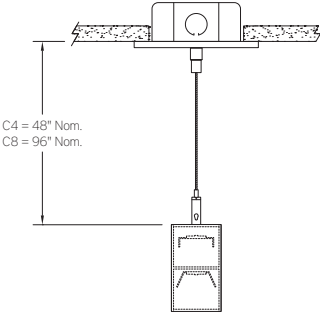
DIRECT OPTIC

| ORDERING CODE | DESCRIPTION | SPECIFICATIONS |
|---|-------------------------------|---|
|  | A FLUSH LENS | Flush frosted acrylic extrusion |
|  | B DROP LENS – SOLID END | 1" H frosted acrylic extrusion with full height aluminum end cap |
|  | C DROP LENS – LUMINOUS END | 1" H frosted acrylic extrusion with matching acrylic end cap |
| | D LOUVER | <p>2" W Flat blade louver with 5/8" blades at 7/8" spacing, formed from sheet steel</p> <p>Finish is Environmental Satin Silver (consult factory for alternate finishes).</p> <p>Supplied with light diffusion film.</p> |
| | E WALL WASH | <p>Acrylic extrusion with optically engineered Fresnel prisms for wall wash applications</p> <p>Available for Cable (C4,C8) mounting only.</p> <p>Optimized for placement 18"-24" from a wall surface.</p> <p>Uniformity ratio as low as 4:1.</p> |

BSS255 | **bodhi**

2" wide direct/indirect LED luminaire

MOUNTING

| | ORDERING CODE | DESCRIPTION |
|---|---------------|--|
|  | WM | <div>WALL MOUNT</div> <ul style="list-style-type: none">1-7/8" H x 4-1/2" W sheet aluminum bracket projects the fixture housing 3/4" from the wall surface.Bracket finish matches fixture finish, or ESS for satin anodize (SA) housing. |
|  | C4 and C8 | <div>CABLE MOUNT</div> <p>Mounting option includes:</p> <ul style="list-style-type: none">Ø 1/16" x 48" (C4) or 96" (C8) aircraft cables60" (C4) or 108" (C8) power cable in coordinating finishBracket barsØ 5" white canopiesCeiling couplersSide exit cable grippers <p>NOTE: WHEN DUAL CIRCUIT OPTION IS USED, TWO POWER CABLES ARE REQUIRED</p> |

OPTIONS






| ORDERING CODE | DESCRIPTION | SPECIFICATIONS |
|---------------|----------------------|--|
| ED | EMERGENCY LED DRIVER | <ul style="list-style-type: none">Universal 120-277V input voltage emergency driver delivers initial minimum power of 10W for 90 minutes.Available for SINGLE CIRCUIT 4' or 8' nominal length non-dim or 0-10V fixture and direct light source only (consult factory for all other lengths/drivers). |

OPTIONS – INTEGRATED CONTROLS

Note: Control option takes up 4" of the overall lens length. For "A", "D" and "E" optic option, controls are mounted to flush filler piece. For "B" and "C" optic option, controls are mounted to 1" H sheet formed cover.



Controls Capable

| | ORDERING CODE | LIGHT OUTPUT SETTING | MODEL | CONTROL PROTOCOL | FUNCTIONS | COMPATIBLE DRIVERS |
|--|---------------|--------------------------|-------------------|--------------------|--|---|
|  legrand® <small>WATTSTOPPER®</small> | WS1A | 100% – 0% ¹ | FS-205 | N/A | PIR occupancy and light level sensor. | For use with on/off or 0-10V dimming drivers only. |
| | WS1B | 100% – 50% ¹ | | | | |
|  PHILIPS <small>EasySense</small> | ES4 | Set during commissioning | SNS211 MC | Bluetooth Wireless | Occupancy, daylight harvesting and task tuning sensor with advance grouping, for use within a MasterConnect network. | Provided with Advance sensor ready series 0-10V dimming drivers. |
|  CASAMBI | CA1 | Set during commissioning | CBU-A2D | Bluetooth Wireless | 0-10V/DALI driver controller, for use within a Casambi ecosystem. | For use with 0-10V or DALI drivers. Consult factory for details. |
|  nLIGHT | NL1 | Set during commissioning | RES7 ² | Radio Wireless | Dimming, PIR occupancy detection and daylight harvesting, for use within an nLight AIR network. | Provided with Advance sensor ready series or eldoLED 0-10V drivers. |
| | NL2 | | RIO ² | | Dimming, for use within an nLight AIR network. | |
|  LUTRON® | LA1 | Set during commissioning | A-WN-D01-RF-WH | Radio Wireless | Dimming only for use with an Athena control system. | Provided with Advance sensor ready series or eldoLED 0-10V or eldoLED DALI-2 drivers. |
| | LA2 | | A-WN-D01-OCC-WH | | Dimming, PIR occupancy and daylight sensor for use with an Athena control system. | |

1. Consult factory for custom light output setting.

2. Consult your Acuity representative for application-specific model number.

BSS255 | **bodhi**

2" wide direct/indirect LED luminaire

LENGTH/MOUNTING DIMENSIONS

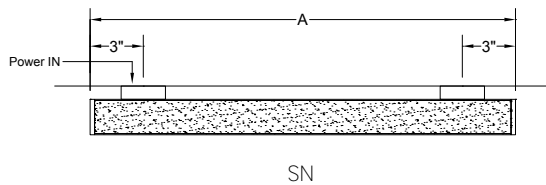
| ORDERING CODE | LENGTH A | LENGTH B | LENGTH C | LENGTH D | LENGTH E |
|---------------|----------|----------|----------|----------|----------|
| 2 | 22-5/8" | 22-3/8" | 22-1/8" | 21-1/8" | 21-5/8" |
| 3 | 33-5/8" | 33-3/8" | 33-1/8" | 32-1/8" | 32-5/8" |
| 4 | 44-5/8" | 44-3/8" | 44-1/8" | 43-1/8" | 43-5/8" |
| 5 | 55-5/8" | 55-3/8" | 55-1/8" | 54-1/8" | 54-5/8" |
| 6 | 66-5/8" | 66-3/8" | 66-1/8" | 65-1/8" | 65-5/8" |
| 7 | 77-5/8" | 77-3/8" | 77-1/8" | 76-1/8" | 76-5/8" |
| 8 | 88-5/8" | 88-3/8" | 88-1/8" | 87-1/8" | 87-5/8" |

RUN CONFIGURATION INFORMATION

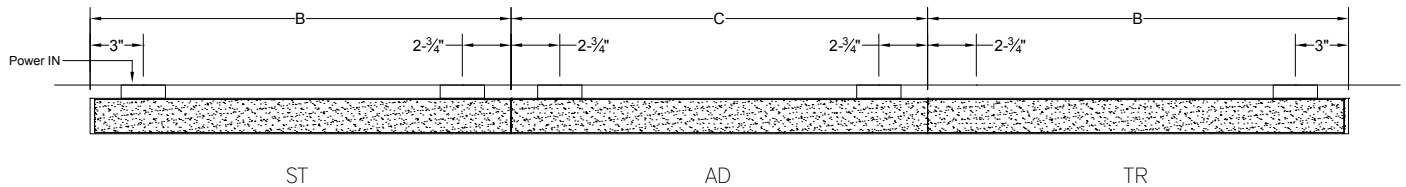
| ORDERING CODE | DESCRIPTION |
|---------------|-------------|
| SN | Single |
| ST | Starter |
| AD | Adder |
| TR | Terminator |

RUN INFORMATION

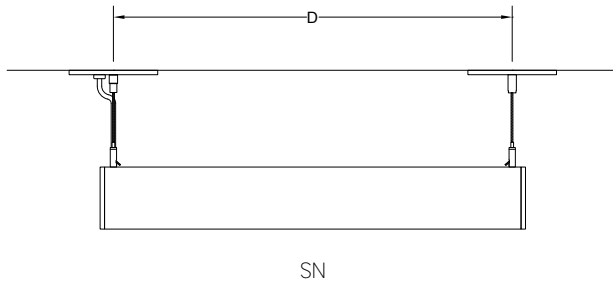
Plan - Wall Mount Single Fixture Option



Plan - Wall Mount Continuous Run Option



Side View - Cable Suspended Single Fixture Option



Side View- Cable Suspended Continuous Run Option

