

BSS208 | **bodhi**

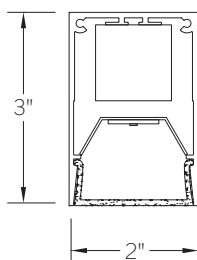
2" wide LED luminaire with flush lens

Project: _____ Type: _____



Highlighted fields denote QuickShip Options. See complete 7-Day QuickShip Terms and Conditions available at www.bartcolighting.com/quickship-products/. Purchase order must reference "QuickShip".

SECTION



PERFORMANCE

Note: All data reflects fixture with 3500K LEDs

NOMINAL LENGTH	OPTIC OPTION	OUTPUT	LUMENS/ft.	WATTS/ft.	LUMINAIRE LUMENS	EFFICACY (LPW)
4'	Lambertian	L: low	485	5.6	1795	86
		R: regular	625	7.8	2331	81
		H: high	825	10.8	3063	76

FEATURES

The BSS208 is a linear LED luminaire for general lighting applications. The 2" wide by 3" tall extrusion is fitted with a flush lens and machined aluminum end caps. Surface, cable or wall mount variants are available, as well as a multiple optic options, dimming drivers and light outputs. The BSS208 is Controls Capable, being offered with a variety of integrated control options.

Fixture with certain options available for 7-Day QuickShip.

SPECIFICATIONS

Fixture constructed of an extruded aluminum housing, extruded, frosted acrylic lens and machined aluminum end caps.

Model variations offered for surface, wall mount and cable suspended applications.

Optic options include an acrylic frosted flush, acrylic Fresnel wall wash lens (for surface or cable mount fixtures) and flat blade louver.

Standard finishes as shown below.

Available in nominal lengths of 2'-8' single fixtures and continuous runs.

Basic continuous run fixtures provided with 18 ga. wiring harness for 6 Amp maximum load (consult factory for runs requiring multiple circuits, sensor integration, etc.).

Standard integral 120-277V driver offered with 0-10V dimming or non-dim (other dimming driver options available).

Integral 120-277V emergency battery backup available for 4' nominal non-dim or 0-10V (consult factory for all other lengths/drivers).

Standard light outputs are 485, 625 and 825 lumens per foot for the Lambertian optic option.

LEDs available in 2700K, 3000K, 3500K and 4000K, within a 3 step MacAdam ellipse, all with 90+ CRI typical.

Bartco Lighting Controls Capable fixture available with integrated controls from a variety of suppliers.

Life: 50,000 hours L₇₀.

Limited five year warranty.

UL and C-UL listed for dry and damp locations.



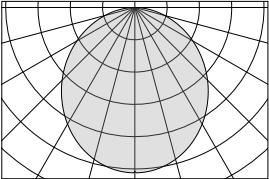
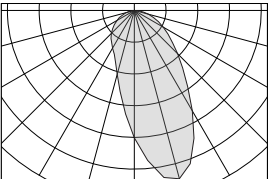
BSS208 -

NOMINAL FIXTURE LENGTH*	CORRELATED COLOR TEMPERATURE	DRIVER	LIGHT OUTPUT (lumens per foot w/optic option 1)	MOUNT	OPTIC	RUN CONFIGURATION	OPTIONS	FINISH
2: 22-5/8"	27: 2700K-90+ CRI	ND: non-dimming	L: low - 485	SM: surface mount	1: Lambertian	SN: single	ED: emergency driver (4' nom. non-dim or 0-10V only)	AW: architectural white (semi-matte)
3: 33-5/8"	30: 3000K-90+ CRI	[Dimming]	R: regular - 625	WD: wall mount - direct	2: wall wash**	ST: starter	WS1A: Wattstopper FS-205, 100%-0% ‡	WH: white (semi-gloss)
4: 44-5/8"	35: 3500K-90+ CRI	D: 0-10V, 1%	H: high - 825	WI: wall mount - indirect	L: louver	AD: adder	WS1B: Wattstopper FS-205, 100%-50% ‡	BL: black (semi-matte)
5: 55-5/8"	40: 4000K-90+ CRI	DTR: triac, 1%, (120V ONLY)	CF: consult factory for custom output	C4: cable mount 4' cable length		TR: terminator	ES4: Philips EasySense SNS211 MC ‡	MB: matte black
6: 66-5/8"		DLV: electronic low voltage, 1%, (120V ONLY)		C8: cable mount 8' cable length			CA1: Casambi CBU-A2D ‡	ESS: environmental satin silver
7: 77-5/8"		HES: Lutron EcoSystem, soft-on/fade-to-black, 1%					NL1: nLight RES7 ‡	BZ: bronze
8: 88-5/8"		EL: eldoLED ECOdrive 0-10V, 1%					NL2: nLight RIO ‡	PR: primer
		ES: eldoLED SOLOdrive 0-10V, 0.1%					LA1: Lutron Athena A-WN-D01-RF-WH ‡	CF: consult factory for custom finish
		ELD: eldoLED ECOdrive DALI, 1%					LA2: Lutron Athena A-WN-D01-OCC-WH ‡	SA: satin anodize (may require additional lead time)
		ESD: eldoLED SOLOdrive DALI, 0.1%						

* Actual dimension dependent on run configuration.

** Wall Wash optic available for Surface Mount (SM) and Cable Mount (C4, C8) only.

‡ See Integrated Controls section for driver compatibility information.

OPTIC			
ORDERING CODE	DESCRIPTION	SPECIFICATIONS	
	1 LAMBERTIAN DISTRIBUTION	Frosted extruded acrylic lens for general Lambertian distribution	
	2 WALL WASH	Acrylic extrusion with optically engineered Fresnel prisms for wall wash applications. Available for Surface (SM) or Cable (C4, C8) mounting only. Optimized for placement 18"-24" from a wall surface. Uniformity ratio as low as 4:1.	
L	LOUVER	2" W Flat blade louver with 5/8" blades at 7/8" spacing, formed from sheet steel. Finish is Environmental Satin Silver (consult factory for alternate finishes). Supplied with light diffusion film.	





OPTIONS			
ORDERING CODE	DESCRIPTION	SPECIFICATIONS	
ED	EMERGENCY LED DRIVER	<ul style="list-style-type: none">Universal 120-277V input voltage emergency driver delivers initial minimum power of 10W for 90 minutes.Available for 4' nominal length non-dim or 0-10V fixture only (consult factory for all other lengths/drivers).Indicator/test switch located on the top for C4/C8 mount and on the side at an end for SM mount.	

OPTIONS – INTEGRATED CONTROLS

Note: Control option takes up 4" of the overall lens length.
Controls are mounted to flush filler piece.



Controls Capable

	ORDERING CODE	LIGHT OUTPUT SETTING	MODEL	CONTROL PROTOCOL	FUNCTIONS	COMPATIBLE DRIVERS
 legrand® WATTSTOPPER®	WS1A	100% – 0% ¹	FS-205	N/A	PIR occupancy and light level sensor.	For use with on/off or 0-10V dimming drivers only.
	WS1B	100% – 50% ¹				
 PHILIPS EasySense	ES4	Set during commissioning	SNS211 MC	Bluetooth Wireless	Occupancy, daylight harvesting and task tuning sensor with advance grouping, for use within a MasterConnect network.	Provided with Advance sensor ready series 0-10V dimming drivers.
CASAMBI	CA1	Set during commissioning	CBU-A2D	Bluetooth Wireless	0-10V/DALI driver controller, for use within a Casambi ecosystem.	For use with 0-10V or DALI drivers. Consult factory for details.
 nLIGHT	NL1	Set during commissioning	RES7 ²	Radio Wireless	Dimming, PIR occupancy detection and daylight harvesting, for use within an nLight AIR network.	Provided with Advance sensor ready series or eldoLED 0-10V drivers.
	NL2		RIO ²		Dimming, for use within an nLight AIR network.	
 LUTRON®	LA1	Set during commissioning	A-WN-D01-RF-WH	Radio Wireless	Dimming only for use with an Athena control system.	Provided with Advance sensor ready series or eldoLED 0-10V or eldoLED DALI-2 drivers.
	LA2		A-WN-D01-OCC-WH		Dimming, PIR occupancy and daylight sensor for use with an Athena control system.	

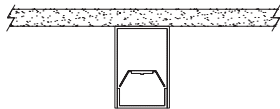
1. Consult factory for custom light output setting.

2. Consult your Acuity representative for application-specific model number.

MOUNTING

ORDERING CODE

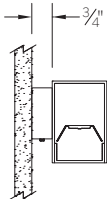
DESCRIPTION



SM

SURFACE MOUNT

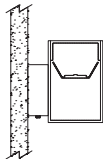
Use appropriate fastener through Ø3/16" holes in housing



WD

WALL MOUNT – DIRECT ORIENTATION

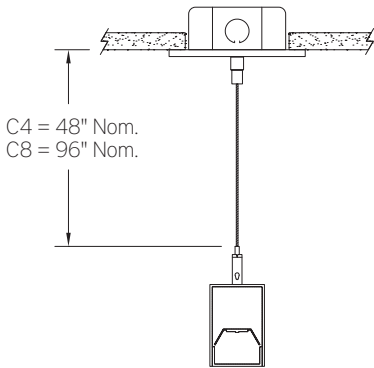
- 1-7/8" H x 4-1/2" W sheet aluminum bracket projects the fixture housing 3/4" from the wall surface.
- Bracket finish matches fixture finish, or ESS for satin anodize (SA) housing.



WI

WALL MOUNT – INDIRECT ORIENTATION

- 1-7/8" H x 4-1/2" W sheet aluminum bracket projects the fixture housing 3/4" from the wall surface.
- Bracket finish matches fixture finish, or ESS for satin anodize (SA) housing.



C4 and C8

CABLE MOUNT

- Mounting option includes:
- Ø 1/16" x 48" (C4) or 96" (C8) aircraft cables
 - 60" (C4) or 108" (C8) power cable (in coordinating finish)
 - Bracket bars
 - Ø 5" white canopies
 - Ceiling couplers
 - Side exit cable grippers

BSS208 | **bodhi**

2" wide LED luminaire with flush lens

LENGTH / MOUNTING DIMENSIONS

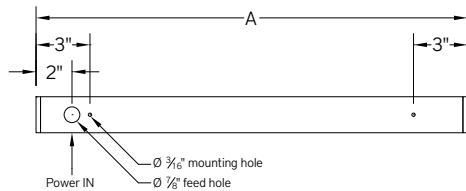
ORDERING CODE	LENGTH A	LENGTH B	LENGTH C	LENGTH D	LENGTH E
2	22-5/8"	22-3/8"	22-1/8"	16-5/8"	19-3/8"
3	33-5/8"	33-3/8"	33-1/8"	27-5/8"	30-3/8"
4	44-5/8"	44-3/8"	44-1/8"	38-5/8"	41-3/8"
5	55-5/8"	55-3/8"	55-1/8"	49-5/8"	52-3/8"
6	66-5/8"	66-3/8"	66-1/8"	60-5/8"	63-3/8"
7	77-5/8"	77-3/8"	77-1/8"	71-5/8"	74-3/8"
8	88-5/8"	88-3/8"	88-1/8"	82-5/8"	85-3/8"

RUN CONFIGURATION INFORMATION

ORDERING CODE	DESCRIPTION
SN	Single
ST	Starter
AD	Adder
TR	Terminator

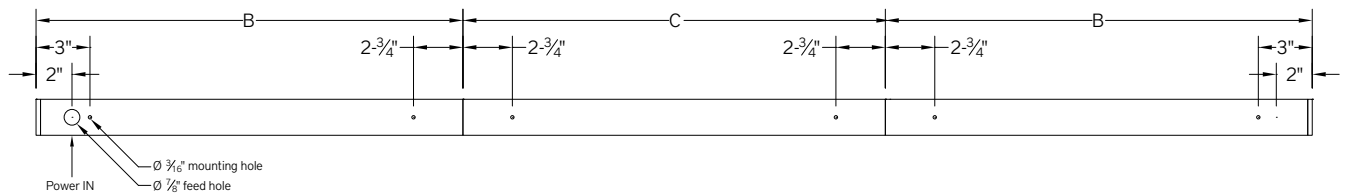
RUN INFORMATION

Back Plan - Surface Mount Single Fixture Option



SN

Back Plan - Surface Mount Continuous Run Option

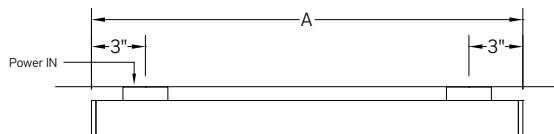


ST

AD

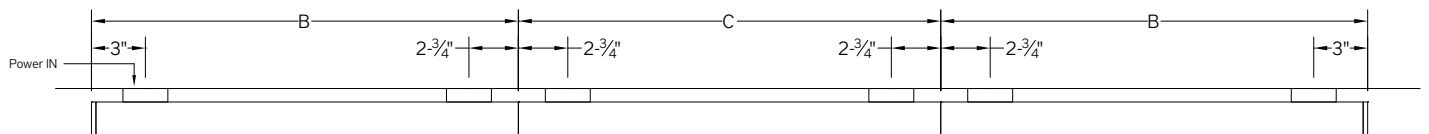
TR

Plan - Wall Mount Single Fixture Option



SN

Plan - Wall Mount Continuous Fixture Option



ST

AD

TR

2" wide LED luminaire with flush lens

A schematic diagram of a two-point support system. A horizontal beam is supported by two vertical supports. The distance between the centers of the supports is labeled 'D'. The total length of the beam is labeled 'A'. The distance from each end of the beam to the center of its respective support is labeled '3"'. The supports are shown as vertical columns with a base and a top flange.

A diagram of a continuous beam with four spans. The spans are labeled with dimensions: the first span is 3 inches, the second span is E, the third span is C, and the fourth span is E. The total length of the beam is B. The beam is supported by four vertical supports. The first support is at the left end, and the last support is at the right end. The beam is shown in a perspective view, with a horizontal line representing the top surface and a vertical line representing the side surface. The dimensions are indicated by arrows and labels above the beam.

TR