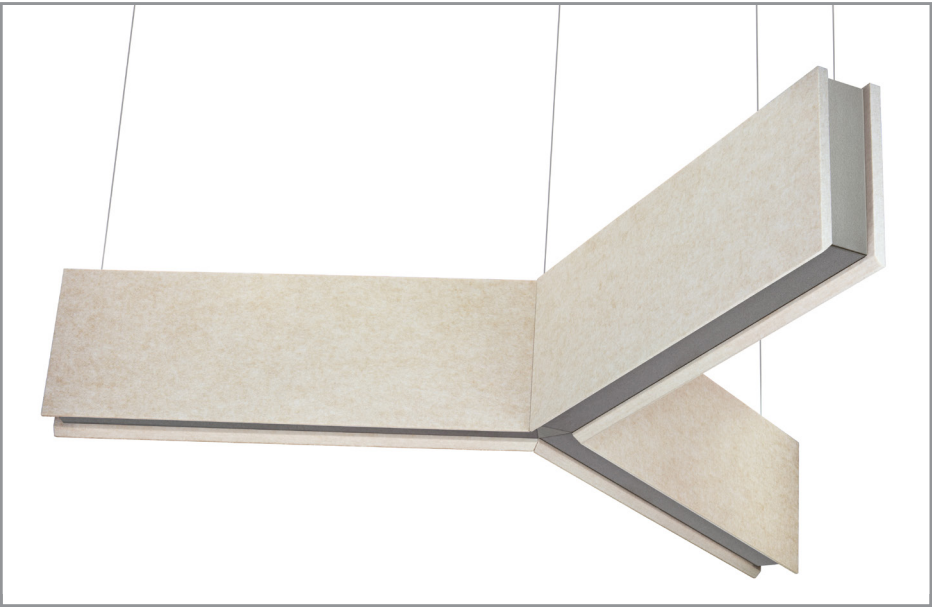


HB2-Y | chill

2" nominal width non-illuminated acoustic baffle, Y-shape configuration

Project: _____

Type: _____



FEATURES

The Chill HB2-Y acoustic baffle complements the HL2-Y luminaire, enhancing interior spaces with subtle to bold colors, while damping sound reflections. The 2" wide frame is clad with ½" thick felt acoustic panels in 8", 12" or 16" heights, 4', 6' and 8' nominal sizes and twenty standard colors. The fixture housing is available in several architectural finishes, as well as optional RAL finishes to coordinate with panel colors. Fixture end treatments include matching acoustic material, machined aluminum end caps with powder coat or printed imagery options or solid wood end caps in a variety of finishes.

SPECIFICATIONS

Fixture constructed of heavy gauge sheet formed steel and aluminum and PET acoustic felt panels.

Fixture offered in sizes of 4', 6' and 8' nominal diameters.

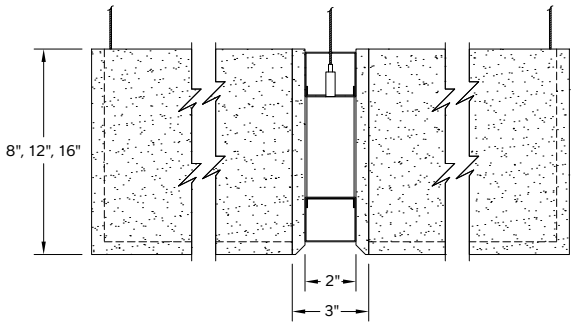
The ½" thick, 100% PET (>75% recycled), fire rated (ASTM E84 Class B) 0.98 NRC acoustic felt panels feature a bottom beveled edge extended ends and are available in twenty standard colors.

Fixture end treatment options available in matching acoustic material or machined aluminum end caps with standard powder coat, optional RAL finishes, high resolution digital imagery or solid wood end caps.

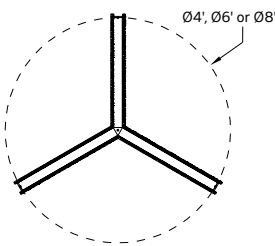
Fixture housing available in standard powder coat finishes and optional RAL finishes coordinated to the panel colors.

Limited five year warranty.

SECTION



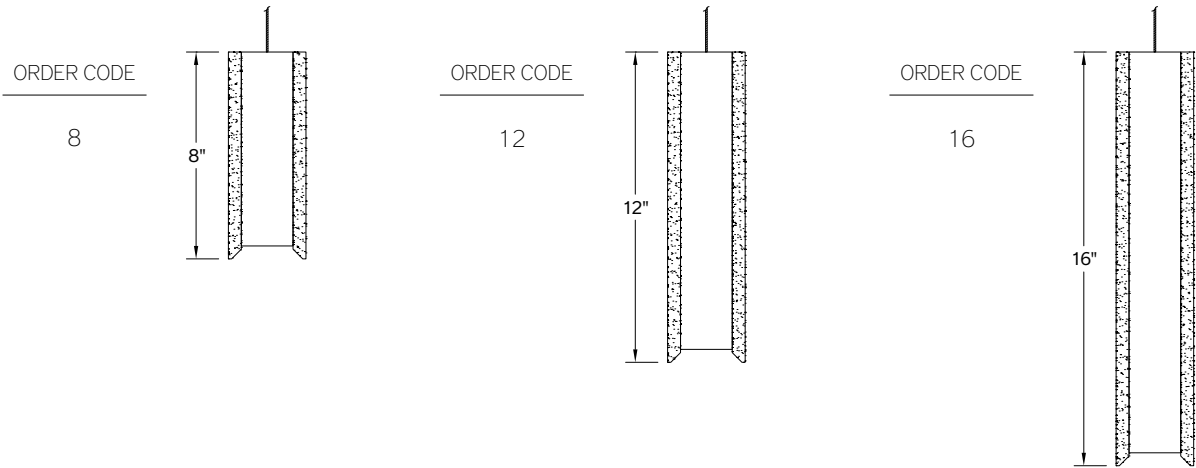
PLAN



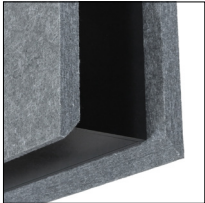
HB2-Y -

HEIGHT	NOMINAL SIZE	BOTTOM EDGE TREATMENT	END TREATMENT	END FINISH	HOUSING FINISH	MOUNT	PANEL FINISH
8: 8" 12: 12" 16: 16"	4: 48" 6: 72" 8: 96"	DB: drop beveled edge CF: consult factory for custom edge	1: extended panels 2: acoustic CF: consult factory for custom end treatment	code from color key: _____ CF: consult factory for custom end finish	code from color key: _____ CF: consult factory for custom housing finish	C4: cable mount 4' cable length C8: cable mount 8' cable length CF: consult factory for custom mounting	code from color key: _____ CF: consult factory for custom finish

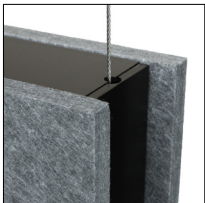
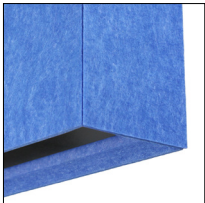
HEIGHT



BOTTOM EDGE TREATMENT

	ORDERING CODE	DESCRIPTION	SPECIFICATIONS
	DB	DROP BEVEL EDGE	Bottom edge of panels extends 1/2" below the underside, finished with a 45 degree bevel.

END TREATMENT

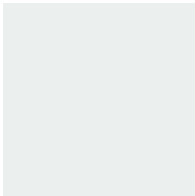
	ORDERING CODE	DESCRIPTION	SPECIFICATIONS
	1	EXTENDED PANELS	Panel ends extend 1/2" beyond the housing length. Includes machined aluminum end cap.
	2	ACOUSTIC	Acoustic material end cap, bottom edge finished with 45 degree bevel.

END FINISH COLOR KEY

NOTE: For End Treatment 2 (acoustic), the end finish will be the same as the specified panel finish.

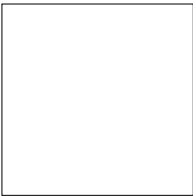
POWDER COAT FINISH OPTIONS
Applies to End Treatment 1 (extended panels).
Finish applied to machined aluminum end cap.

AW



Architectural White

WH



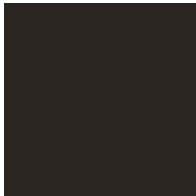
White (semi-gloss)

BL



Black (semi-matte)

MB



Matte Black

ESS



Environmental
Satin Silver

BZ



Bronze

RAL



Select from options on
the Panel Color Key

CF



Custom Finish
Consult Factory

END FINISH COLOR KEY (CONTINUED)

WOOD END CAP OPTIONS

Applies to End Treatment 1 (extended panels).

Furniture grade caps are 1/2" thick and hand finished in clear shellac with a liquid wax sealer.

WN



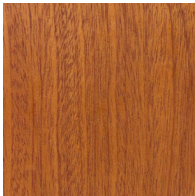
Solid Walnut

EB



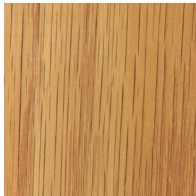
Solid European
Beech

MH



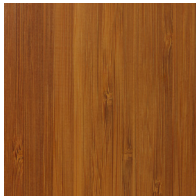
Solid Mahogany

WO



Solid White Oak

BB



Bamboo Ply

P01



Baltic Birch Ply
Natural Maple

P02



Baltic Birch Ply
Red Stained Maple

P03



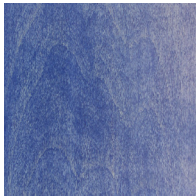
Baltic Birch Ply
Orange Stained Maple

P04



Baltic Birch Ply
Green Stained Maple

P05



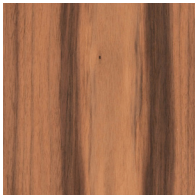
Baltic Birch Ply
Blue Stained Maple

FAUX FINISH OPTIONS

Applies to End Treatment 1 (extended panels).

Finish comprised of a multi-stage application process that produces durable, high resolution imagery.

FXW



Faux Walnut

FXP



Faux Pine

FXWO



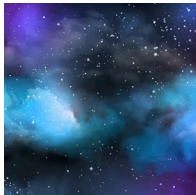
Faux White Oak

FXC



Faux Cherry

FCF



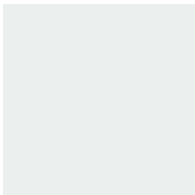
Custom Faux Finish
Consult Factory

HOUSING FINISH

POWDER COAT FINISH OPTIONS

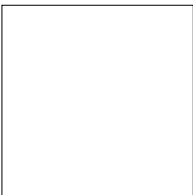
Note : Housing finish can be different than the end cap finish (End Treatment 1). An upcharge may apply.

AW



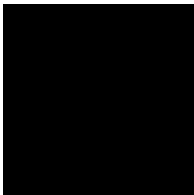
Architectural White

WH



White (semi-gloss)

BL



Black (semi-matte)

MB



Matte Black

ESS



Environmental
Satin Silver

BZ



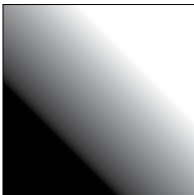
Bronze

RAL



Select from options on
the Panel Color Key

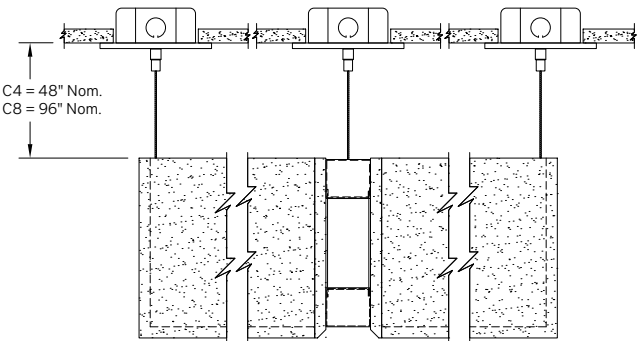
CF



Custom Finish
Consult Factory

MOUNTING

ORDERING CODE DESCRIPTION SPECIFICATIONS



C4 and C8

CABLE
MOUNT

- Mounting option includes:
- Ø 1/16" x 48" (C4) or 96" (C8) aircraft cables
 - Ceiling couplers, cable grippers and Ø 5" white canopies

ACOUSTIC PANEL COLOR KEY

Chill acoustic panels are made from 100% PET (>75% recycled) colored felt fibers. The 1/2" thick, cohesive material construction traps sound waves and aids in reducing sound reflections within interior spaces (0.98 NRC). Lightweight and durable, the panels are also fire rated (ASTM E84 Class B). The twenty standard colors can be paired with matching acoustic ends, wood end caps or metal end caps in six standard powder coat finishes, optional coordinating RAL colors or Faux finishes.

Note: Ordering Code shown above color image.

Optional coordinating RAL finish for end cap and unlit areas shown in parenthesis.

01



White
(RAL 9003)

02



Granite
(RAL 7047)

03



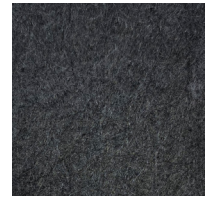
Overcast
(RAL 7004)

04



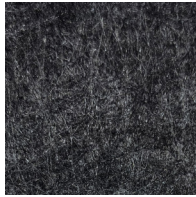
Slate
(RAL 7039)

05



Lava Rock
(RAL 7016)

06



Black Sand
(RAL 7022)

07



Black
(RAL 9004)

08



Light Sand
(RAL 1013)

09



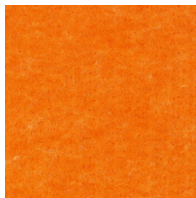
Dark Sand
(RAL 1019)

10



Mango
(RAL 1017)

11



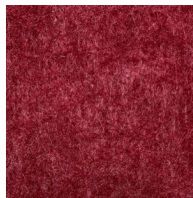
Poppy
(RAL 2011)

12



Hibiscus
(RAL 3031)

13



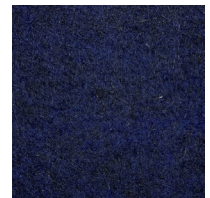
Burgundy
(RAL 4002)

14



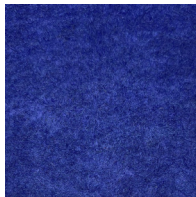
Violet
(RAL 4005)

15



Marine Blue
(RAL 5011)

16



Deep Sea
(RAL 5002)

17



Sky Blue
(RAL 5007)

18



Laguna Blue
(RAL 5012)

19



Emerald
(RAL 6012)

20



Lime
(RAL 6011)