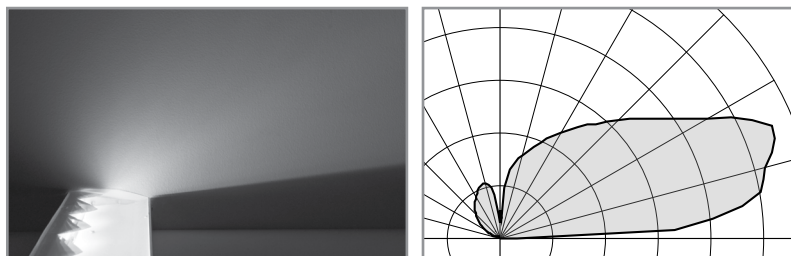
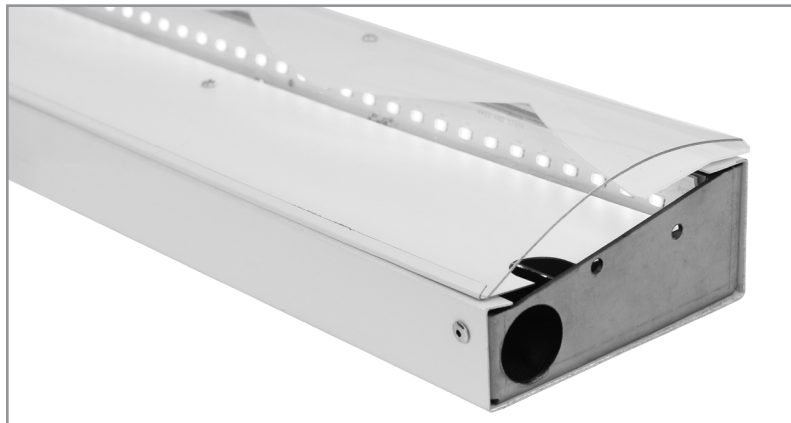


Project: _____ Type: _____



FEATURES

The BSS121 is a shallow profile LED luminaire for cove applications requiring quality asymmetric light distribution and high lumen levels. The heavy gauge, sheet formed housing is fitted with a primary and saw-tooth reflector to produce a smooth, uniform gradient light across the ceiling plane. A clear dust cover shields the reflector system and 90+ CRI LED modules.

SPECIFICATIONS

Fixture housing constructed of formed and riveted, pre-painted 20 gauge aluminum and heavy gauge steel sheet end caps.

The multi-reflector optic system is formed from aluminum with finishes of up to 96% reflectance.

Includes a clear acrylic dust cover.

Available in nominal lengths of 2', 3', 4' and 5'.

Fixtures provided with 18 ga. wiring harness for 6 Amp maximum load (consult factory for runs requiring multiple circuits, sensor integration, etc.).

Standard integral 120V-277V driver offered with 0-10V dimming or non-dim (other dimming driver options available).

Integral 120-277V emergency battery backup available for 4' nominal non-dim or 0-10V (consult factory for all other lengths/drivers).

Standard outputs are 1000 and 1200 lumens per foot.

LEDs available in 2700K, 3000K, 3500K, and 4000K, within a 3 step MacAdam ellipse, all with 90+ CRI typical.

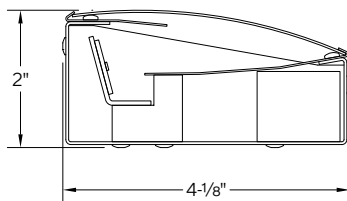
A supplemental optic blending film is provided for fixtures that terminate at a perpendicular wall.

Life: 50,000 hours L₇₀.

UL and C-UL listed for dry and damp locations.

Limited five year warranty.

SECTION



PERFORMANCE

NOMINAL LENGTH	OUTPUT	LUMENS/ft.	WATTS/ft.	LUMINAIRE LUMENS	EFFICACY (LPW)
4'	L: low	1000	12.8	3700	79
	R: regular	1200	15.6	4424	77


Note: All data reflects fixtures with 3500K LEDs



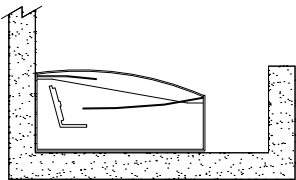
BSS121 -

FIXTURE LENGTH 22: 22-1/4" 33: 33-1/4" 44: 44-1/4" 55: 55-1/4"	CORRELATED COLOR TEMPERATURE 27: 2700K-90+ CRI 30: 3000K-90+ CRI 35: 3500K-90+ CRI 40: 4000K-90+ CRI	DRIVER ND: non-dimming [Dimming] D: 0-10V, 1% DTR: triac, 1%, (120V ONLY) DLV: electronic low voltage, 1%, (120V ONLY) HES: Lutron EcoSystem, soft-on/fade-to-black, 1%	EL: eldoLED ECOdrive 0-10V, 1% ES: eldoLED SOLOdrive 0-10V, 0.1% ELD: eldoLED ECOdrive DALI, 1% ESD: eldoLED SOLOdrive DALI, 0.1%	LIGHT OUTPUT (lumens per foot) L: low – 1000 R: regular – 1200 CF: consult factory for custom output	OPTIONS ED: emergency driver (see details section on page 2)
---	---	---	--	--	--


OPTIONS

	ORDERING CODE	DESCRIPTION	SPECIFICATIONS
	ED	EMERGENCY LED DRIVER	<ul style="list-style-type: none"> • Universal 120-277V input voltage emergency driver delivers initial minimum power of 10W for 90 minutes. • Available for 4' nominal length non-dim or 0-10V fixture only (consult factory for all other lengths/drivers). • Provided with combination test switch/indicator light for remote mount installation.

MOUNTING

	DESCRIPTION
	<ul style="list-style-type: none"> • Use appropriate fastener through $\text{Ø}3/16''$ holes in housing. <p>NOTE: A minimum distance of 10" is suggested from the top of the fixture to the ceiling surface for best blending of light.</p>

ACCESSORY

	ORDERING CODE	DESCRIPTION	SPECIFICATIONS
	BSS120-DF	END OF RUN DIFFUSION FILM	<ul style="list-style-type: none"> • 8" long piece of diffusion film blends and softens the light distribution on the end wall surfaces.