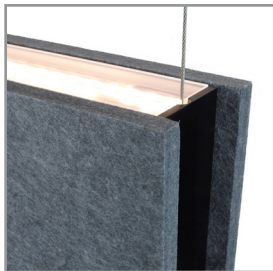


HL2 | hush

2" aperture direct/indirect acoustic panel luminaire

Project: _____ Type: _____



FEATURES

The Hush HL2 direct/indirect luminaire is designed to enhance interior spaces with subtle to bold colors, while damping sound reflections. The 2" wide aperture fixture is clad with 1/2" thick felt acoustic panels in 8", 12" or 16" heights and twenty standard colors. Machined aluminum end caps are available in several architectural finishes, as well as optional RAL finishes to coordinate with panel colors. Add additional sound absorption in an architectural space with complimenting HB2 non-illuminated acoustic baffles.

SPECIFICATIONS

Fixture constructed of extruded aluminum, heavy gauge sheet formed steel and aluminum, extruded acrylic lenses and PET acoustic felt panels

Model variations offered for cable suspended and wall mount applications as 2'-8' nominal single fixtures and continuous runs up to 50'

The 1/2" thick, 100% PET (>75% recycled), fire rated (ASTM E84 Class B) 0.98 NRC acoustic felt panels feature a bottom beveled edge, extended ends and are available in twenty standard colors

Unlit areas and standard machined aluminum end caps are available in standard powder coat finishes as shown below and optional RAL finishes coordinated to the panel colors

Indirect Lambertian and batwing optic options are available

Basic continuous run fixtures provided with 18 ga. wiring harness for 6 Amp maximum load (consult factory for runs requiring multiple circuits, sensor integration, etc.)

Standard integral 120-277V driver offered with 0-10V dimming or non-dim (other dimming driver options available)

Integral 120-277V emergency battery backup available for non-dim or 0-10V fixtures and operate the direct source in 4' sections within the run (consult factory for details and for compatibility with other drivers)

Standard light outputs range from 445 – 860 lumens per foot for the direct source and 455 – 1340 lumens per foot for the indirect source

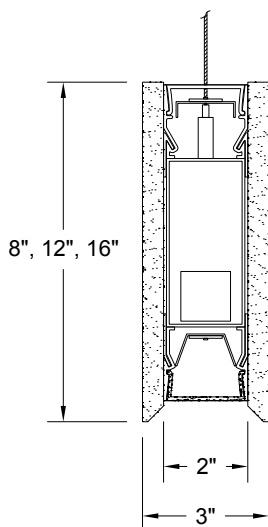
LEDs available in 2700K, 3000K, 3500K and 4000K, within a 3 step MacAdam ellipse, all with 90+ CRI typical

Life: 50,000 hours L₇₀

Limited five year warranty

UL and C-UL listed for dry and damp locations

SECTION



PERFORMANCE

NOMINAL LENGTH	OPTIC CONFIGURATION	OUTPUT	LUMENS/ft.	WATTS/ft.	LUMINAIRE LUMENS	EFFICACY (LPW)
4'	Indirect – Lambertian	L: low	475	3.7	1899	127.4
		R: regular	645	5.2	2589	124.5
		H: high	880	7.3	3524	120.5
		VH: very high	1340	11.9	5351	112.8
	Indirect – batwing	L: low	455	3.7	1811	120.5
		R: regular	620	5.2	2470	118.5
		H: high	840	7.3	3362	114.8
		VH: very high	1275	11.9	5105	107.4
	Direct	L: low	445	5.2	1789	85.5
		R: regular	610	7.4	2435	82.8
		H: high	860	11.0	3441	78.6

*Note: All data reflects fixtures with 3500K LEDs



HL2 | hush

2" aperture direct/indirect acoustic panel luminaire

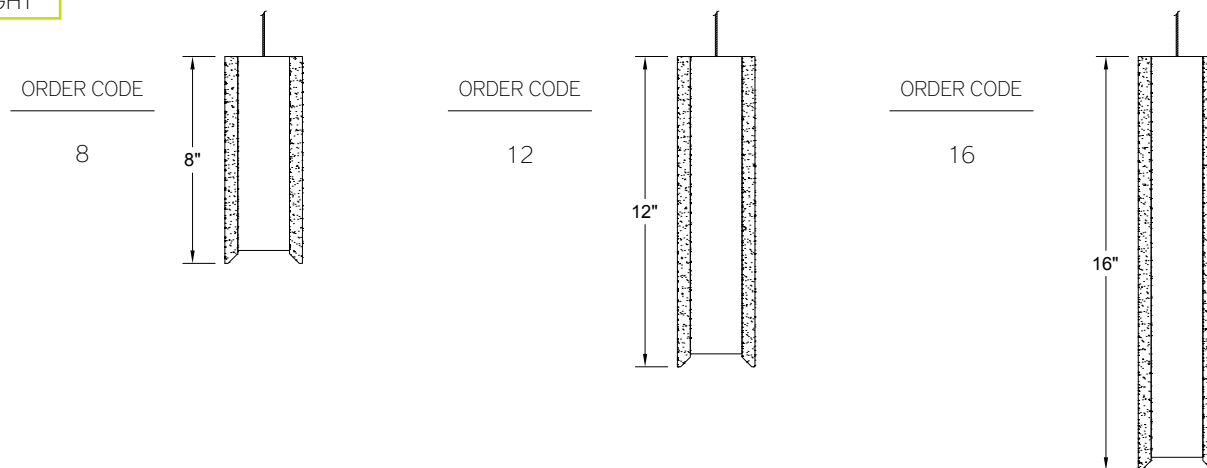
HL2 -

HEIGHT 8: 8" 12: 12" 16: 16"	BOTTOM EDGE TREATMENT DB: drop beveled edge CF: consult factory for custom edge treatment	END FINISH AW: architectural white (semi-matte) WH: white (semi-gloss) BL: black (semi-matte) MB: matte black ESS: environmental satin silver BZ: bronze RAL: optional RAL finish coordinates w/panel color ‡ CF: consult factory for custom finish	CORRELATED COLOR TEMPERATURE 27: 2700K-90+ CRI 30: 3000K-90+ CRI 35: 3500K-90+ CRI 40: 4000K-90+ CRI	INDIRECT LIGHT CONFIGURATION L1: low output, Lambertian dist. – 475 lm/ft. R1: reg. output, Lambertian dist. – 645 lm/ft. H1: high output, Lambertian dist. – 880 lm/ft. VH1: very high output, Lambertian dist. – 1340 lm/ft. L2: low output, batwing dist. – 455 lm/ft. R2: reg. output, batwing dist. – 620 lm/ft. H2: high output, batwing dist. – 840 lm/ft. VH2: very high output, batwing dist. – 1275 lm/ft. NA: no indirect light source CF: consult factory for custom configuration	MOUNT C4: cable mount 4' cable length C8: cable mount 8' cable length WM: wall mount CF: consult factory for custom mounting	PANEL FINISH code from color key: CF: consult factory for custom color
RUN LENGTH* Specify run from 2'-50' to the nearest foot	END TREATMENT 1: extended panels/metal end cap 2: mitered panels/acoustic end cap CF: consult factory for custom end	CIRCUIT 1: single circuit 2: two circuit (4'+ run length)	DRIVER ND: non-dimming [Dimming] D: 0-10V, 1% DTR: triac, 1% DLV: electronic low voltage, 1% HES: Lutron Eco-System, soft-on/fade-to-black, 1% EL: eldoLED ECO-drive 0-10V, 1% ES: eldoLED SOLO-drive 0-10V, 0.1% ELD: eldoLED ECOdrive DALI, 1% ESD: eldoLED SOLOdrive DALI, 0.1%	OPTIONS ED: emergency driver (SINGLE CIRCUIT, non-dim or 0-10V only)	DIRECT LIGHT CONFIGURATION LA: low output, flush lens – 445 lm/ft. RA: reg. output, flush lens – 610 lm/ft. HA: high output, flush lens – 860 lm/ft. NA: no direct light source CF: consult factory for custom output	

* Specify run length to the nearest one foot. Factory will configure using the least quantity of fixtures as close to the desired run length as possible without exceeding the length. Run to be confirmed with a shop drawing.

‡ When the RAL code is optioned, the end cap will be finished in an RAL color that closely matches the selected Panel Color. See Panel Color key for details.

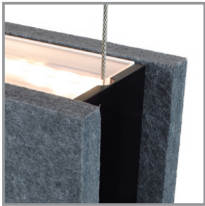
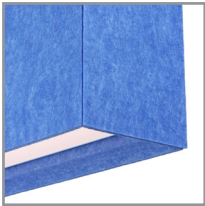
HEIGHT



BOTTOM END TREATMENT

ORDERING CODE	DESCRIPTION	SPECIFICATIONS
 DB	DROP BEVEL EDGE	Bottom edge of panels extends 1/2" below the lens, finished with a 45 degree bevel

END TREATMENT

	ORDERING CODE	DESCRIPTION	SPECIFICATIONS
	1	EXTENDED PANELS / METAL END CAP	Panel ends extend 1/2" beyond the housing length Includes machined aluminum end cap
	2	MITERED PANELS/ ACOUSTIC END CAP	Acoustic material end cap, bottom edge finished with 45 degree bevel

END FINISH

Machined aluminum end caps available in the following powder coat finishes.

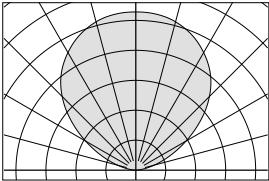
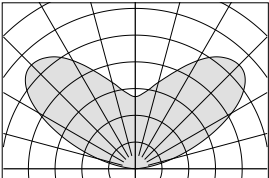
STANDARD FINISHES

- | | |
|--------------------------------------|------------------------|
| AW: architectural white (semi-matte) | WH: white (semi-gloss) |
| BL: black (semi-matte) | MB: matte black |
| ESS: environmental satin silver | BZ: bronze |

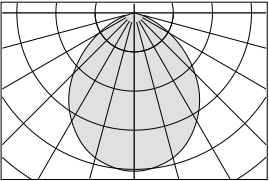
OPTIONAL FINISH

- | | |
|--|--|
| RAL: RAL color coordinates with specified panel color
See panel color key for details | NOTE: When the indirect or direct light
source options are omitted, the visible
fixture will be finished to match. |
|--|--|

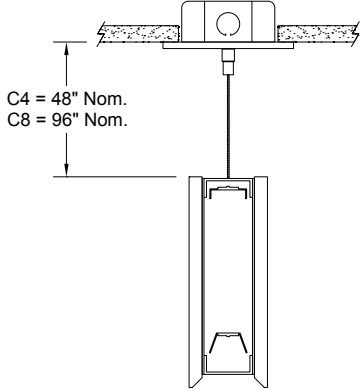
INDIRECT LIGHT CONFIGURATION

	ORDERING CODE	DESCRIPTION	SPECIFICATIONS
	L1	Low light output - Lambertian distribution	Lightly diffuse extruded acrylic lens for general Lambertian distribution
	R1	Regular light output - Lambertian distribution	
	H1	High light output - Lambertian distribution	
	VH1	Very high light output - Lambertian distribution	
	L2	Low light output - batwing distribution	Clear extruded acrylic lens with wide distribution optic features
	R2	Regular light output - batwing distribution	
	H2	High light output - batwing distribution	
	VH2	Very high light output - batwing distribution	

DIRECT LIGHT CONFIGURATION

	ORDERING CODE	DESCRIPTION	SPECIFICATIONS
	LA	Low light output - flush lens	Flush, frosted extruded acrylic lens
	RA	Regular light output - flush lens	
	HA	High light output - flush lens	

MOUNTING

	ORDERING CODE	DESCRIPTION
	C4 and C8	<p>CABLE MOUNT</p> <p>Mounting option includes:</p> <ul style="list-style-type: none">• Ø 1/16"x 48" (C4) or 96" (C8) aircraft cables• 60" (C4) or 108" (C8) power cable in coordinating finish• Ø 5" white canopies• Ceiling couplers, cable grippers and hardware <p>NOTE: WHEN DUAL CIRCUIT OPTION IS USED, TWO POWER CABLES ARE REQUIRED</p>

OPTIONS

ORDERING CODE	DESCRIPTION	SPECIFICATIONS
ED	EMERGENCY LED DRIVER	<ul style="list-style-type: none">• Universal 120-277V input voltage emergency driver delivers initial minimum power of 10W for 90 minutes• Available for runs greater than 4' with non-dim or 0-10V driver/s, operating the direct source in 4' sections (consult factory for details and compatibility with other drivers)• Indicator lamp/test switch located on the underside at an end

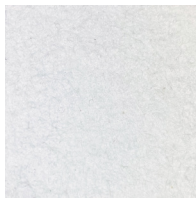
ACOUSTIC PANEL COLOR KEY

Hush acoustic panels are made from 100% PET (>75% recycled) colored felt fibers. The 1/2" thick, cohesive material construction traps sound waves and aids in reducing sound reflections within interior spaces (0.98 NRC). Lightweight and durable, the panels are also fire rated (ASTM E84 Class B). There are twenty colors which can be paired with six standard powder coat finishes or optional coordinating RAL colors.

Note: Ordering Code shown above color image.

Optional coordinating RAL finish for end cap and unlit areas shown in parenthesis.

01



White
(RAL 9003)

02



Granite
(RAL 7047)

03



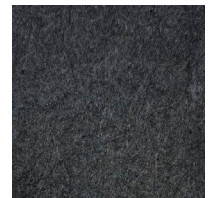
Overcast
(RAL 7004)

04



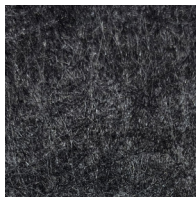
Slate
(RAL 7039)

05



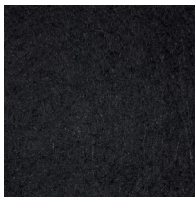
Lava Rock
(RAL 7016)

06



Black Sand
(RAL 7022)

07



Black
(RAL 9004)

08



Light Sand
(RAL 1013)

09



Dark Sand
(RAL 1019)

10



Mango
(RAL 1017)

11



Poppy
(RAL 2011)

12



Hibiscus
(RAL 3031)

13



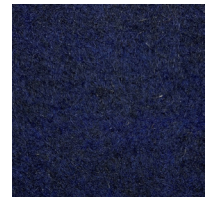
Burgundy
(RAL 4002)

14



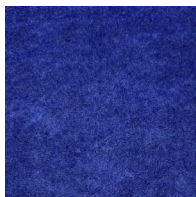
Violet
(RAL 4005)

15



Marine Blue
(RAL 5011)

16



Deep Sea
(RAL 5002)

17



Sky Blue
(RAL 5007)

18



Laguna Blue
(RAL 5012)

19



Emerald
(RAL 6012)

20



Lime
(RAL 6011)

RUN INFORMATION

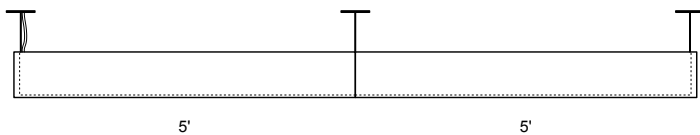
Specify run length to the nearest one foot. Factory will configure using the least quantity of fixtures as close to the desired run length as possible without exceeding the length. Mounting points will be located to provide the most even appearance possible. Consult factory for other mounting options.

Runs to be confirmed with a shop drawing.

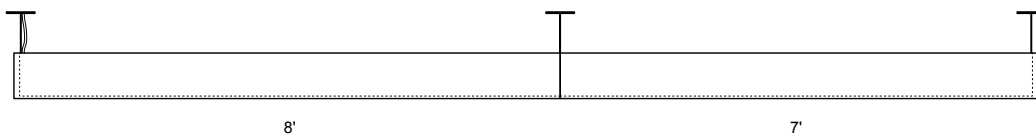
RUN LENGTH	FIXTURES USED (TO THE NOMINAL FOOT)	RUN LENGTH	FIXTURES USED (TO THE NOMINAL FOOT)	RUN LENGTH	FIXTURES USED (TO THE NOMINAL FOOT)
2'	2'	19'	6' + 7' + 6'	35'	7' + 7' + 7' + 7' + 7'
3'	3'	20'	7' + 6' + 7'	36'	7' + 7' + 8' + 7' + 7'
4'	4'	21'	7' + 7' + 7'	37'	8' + 7' + 7' + 7' + 8'
5'	5'	22'	7' + 8' + 7'	38'	7' + 8' + 8' + 8' + 7'
6'	6'	23'	8' + 7' + 8'	39'	8' + 8' + 7' + 8' + 8'
7'	7'	24'	8' + 8' + 8'	40'	8' + 8' + 8' + 8' + 8'
8'	8'	25'	6' + 6' + 6' + 7'	41'	7' + 7' + 7' + 7' + 7' + 6'
9'	5' + 4'	26'	7' + 6' + 6' + 7'	42'	7' + 7' + 7' + 7' + 7' + 7'
10'	5' + 5'	27'	7' + 7' + 7' + 6'	43'	7' + 7' + 7' + 7' + 7' + 8'
11'	6' + 5'	28'	7' + 7' + 7' + 7'	44'	8' + 7' + 7' + 7' + 7' + 8'
12'	6' + 6'	29'	7' + 7' + 7' + 8'	45'	8' + 8' + 7' + 7' + 7' + 8'
13'	7' + 6'	30'	8' + 7' + 7' + 8'	46'	7' + 8' + 8' + 8' + 8' + 7'
14'	7' + 7'	31'	8' + 8' + 8' + 7'	47'	8' + 8' + 8' + 8' + 8' + 7'
15'	8' + 7'	32'	8' + 8' + 8' + 8'	48'	8' + 8' + 8' + 8' + 8' + 8'
16'	8' + 8'	33'	6' + 7' + 7' + 7' + 6'	49'	7' + 7' + 7' + 7' + 7' + 7' + 7'
17'	6' + 5' + 6'	34'	7' + 7' + 6' + 7' + 7'	50'	7' + 7' + 7' + 8' + 7' + 7' + 7'
18'	6' + 6' + 6'				

ILLUSTRATED EXAMPLES

10' RUN



15' RUN



20' RUN

