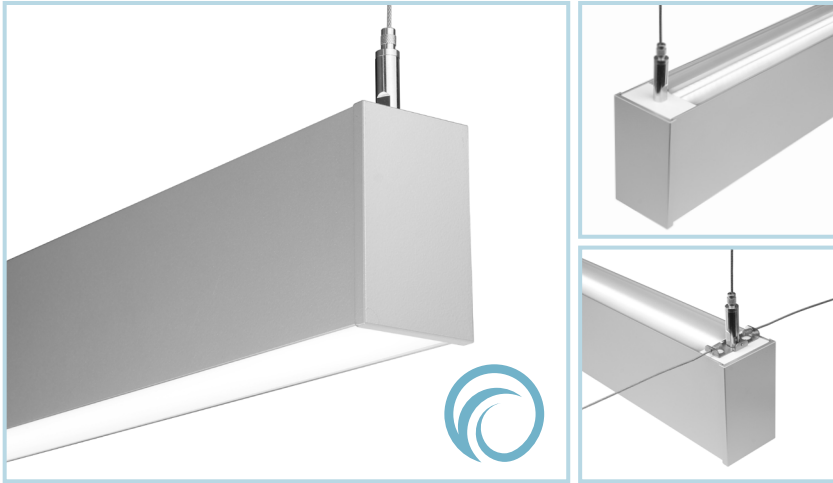


Project: _____ Type: _____



FEATURES

The BSW255 is a linear LED luminaire for outdoor applications. The cable or wall mount 2" wide by 3-1/2" tall aluminum extrusion is fitted with a flush, acrylic lens and machined aluminum end caps. Each fixture is paired with a remote mounted wet location 0-10V dimming or non-dimming driver and housing.

SPECIFICATIONS

Fixture constructed of an extruded aluminum housing, extruded acrylic lenses and machined aluminum end caps.

Direct orientation optic is an extruded acrylic flush lens.

Indirect optic options include Lambertian and batwing distribution lenses.

Standard finishes as shown below.

Available for wall or cable mounting in nominal lengths of 2'-8' single fixtures and continuous runs.

Fixtures wired with 10' low voltage leads.

Included remote 120-277V wet location driver offered with 0-10V dimming or non-dim and surface mount aluminum enclosure.

Performance pending laboratory testing.

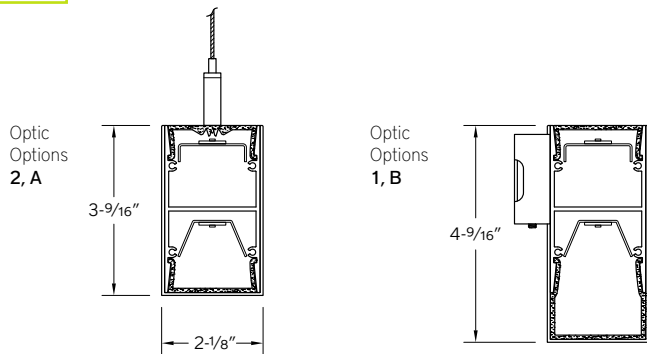
LEDs available in 2700K, 3000K, 3500K and 4000K, within a 3 step MacAdam ellipse, all with 90+ CRI typical.

Life: 50,000 hours L_{70}

Limited five year warranty.

UL and C-UL listed for wet locations.

SECTION

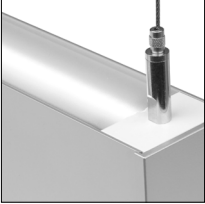



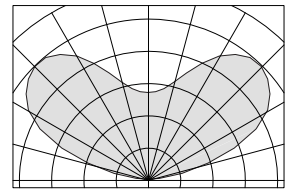
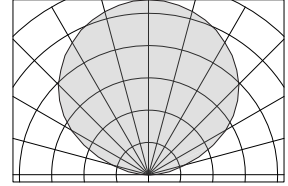
BSW255 -

NOMINAL FIXTURE LENGTH* 2: 24-5/8" 3: 36-5/8" 4: 48-5/8" 5: 60-5/8" 6: 72-5/8" 7: 84-5/8" 8: 96-5/8"	CORRELATED COLOR TEMPERATURE 27: 2700K-90+ CRI 30: 3000K-90+ CRI 35: 3500K-90+ CRI 40: 4000K-90+ CRI	CIRCUIT 1: single circuit 2: two circuit	DIRECT LIGHT OUTPUT (lumens per foot w/optic option B) L: low R: regular H: high	DIRECT OPTIC A: flush lens B: drop lens - solid end	MOUNT WM: wall mount C4: cable mount 4' cable length C8: cable mount 8' cable length	FINISH AW: architectural white (semi-matte) WH: white (semi-gloss) BL: black (semi-matte) MB: matte black ESS: environmental satin silver BZ: bronze PR: primer CF: consult factory for custom finish
	REMOTE DRIVER RN: non-dimming [Dimming] RD: 0-10V, 5%	INDIRECT LIGHT OUTPUT (lumens per foot w/optic option 1) L: low R: regular H: high	INDIRECT OPTIC 1: Lambertian distribution 2: batwing distribution (C4, C8 mount only)		RUN CONFIGURATION SN: single ST: starter AD: adder TR: terminator	


* Actual dimension dependent on run configuration.

INDIRECT OPTIC

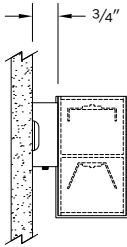
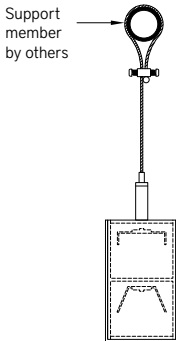
ORDERING CODE	DESCRIPTION	SPECIFICATIONS
	1 LAMBERTIAN DISTRIBUTION	Lightly frosted acrylic extrusion for Lambertian distribution.
	2 BATWING DISTRIBUTION	Clear acrylic extrusion with wide distribution optic features. For C4/C8 mount only.



DIRECT OPTIC

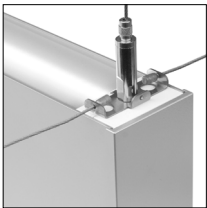
ORDERING CODE	DESCRIPTION	SPECIFICATIONS
	A FLUSH LENS	Flush frosted acrylic extrusion.
B	DROP LENS – SOLID END	1" H frosted acrylic extrusion with full height machined aluminum end cap.

MOUNTING

	ORDERING CODE	DESCRIPTION	SPECIFICATIONS
	WM	WALL MOUNT	Fixture provided with 1-7/8" H x 4-1/2" W sheet aluminum brackets that project the fixture housing 3/4" from the wall surface.
	C4 C8	CABLE MOUNT	<p>Fixture provided with $\varnothing 1/16"$ x 48" (C4) or 96" (C8) stainless steel aircraft cables.</p> <p>Fixture wired with 60" (C4) or 108" (C8) power cable in coordinating finish. Includes wet rated, side exit cable grippers.</p> <p>Included hardware can be used to loop and clamp cable around support members.</p> <p>OTHER MOUNTING COMPONENTS, JUNCTION BOXES, ETC. PROVIDED BY OTHERS.</p> <p>WHEN DUAL CIRCUIT OPTION IS USED, TWO POWER CABLES ARE REQUIRED.</p> <p>FOR ADDITIONAL HANGING STABILITY, AN ACCESSORY SUPPLEMENTAL CABLE SUPPORT KIT IS AVAILABLE AND ORDERED SEPARATELY.</p> <p>MOUNTING CONDITIONS CAN VARY GREATLY. INSTALLER RESPONSIBLE FOR MOUNTING FIXTURE SECURELY IN ACCORDANCE WITH APPLICABLE CODES.</p>

ACCESSORIES

NOTE: Accessories ordered separately.

	ORDERING CODE	DESCRIPTION	SPECIFICATIONS
	SCK-8	SUPPLEMENTAL CABLE SUPPORT KIT, 8'	<p>Each kit includes $\varnothing 1/16"$ x 96" stainless steel aircraft cable, and wet location side exit cable gripper (requires 1/4-20 threaded anchor by others).</p> <p>All fixtures manufactured with stainless bracket for attaching up to three additional $\varnothing 1/16"$ aircraft cables.</p> <p>Consult factory for additional cable length options.</p> <p>MOUNTING CONDITIONS CAN VARY GREATLY. INSTALLER RESPONSIBLE FOR MOUNTING FIXTURE SECURELY IN ACCORDANCE WITH APPLICABLE CODES.</p>

EPA CALCULATIONS

EFFECTIVE PROJECTED AREA	LENGTH	ORDER CODE	EPA	LENGTH	ORDER CODE	EPA
		2		0.60 ft ²	6	
	3		0.90 ft ²	7		2.07 ft ²
	4		1.18 ft ²	8		2.35 ft ²
	5		1.47 ft ²			

LENGTH/MOUNT DIMENSIONS

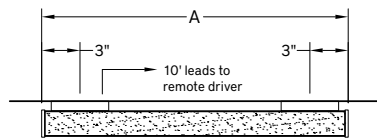
ORDERING CODE	LENGTH A	LENGTH B	LENGTH C	LENGTH D	LENGTH E
2	24-5/8"	24-7/16"	24-1/4"	23-11/16"	23-1/8"
3	36-5/8"	36-7/16"	36-1/4"	35-11/16"	35-1/8"
4	48-5/8"	48-7/16"	48-1/4"	47-11/16"	47-1/8"
5	60-5/8"	60-7/16"	60-1/4"	59-11/16"	59-1/8"
6	72-5/8"	72-7/16"	72-1/4"	71-11/16"	71-1/8"
7	84-5/8"	84-7/16"	84-1/4"	83-11/16"	83-1/8"
8	96-5/8"	96-7/16"	96-1/4"	94-11/16"	94-1/8"

RUN CONFIGURATION INFORMATION

ORDERING CODE	DESCRIPTION
SN	Single
ST	Starter
AD	Adder
TR	Terminator

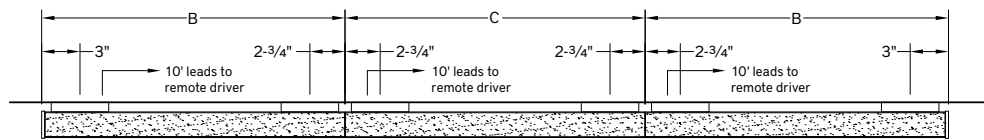
RUN INFORMATION

Plan View - Wall Mount Single Fixture



SN

Plan View - Wall Mount Continuous Run

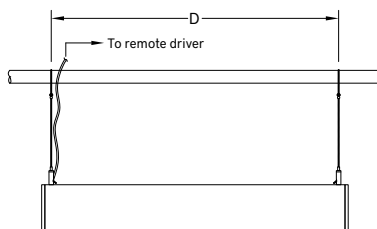


ST

AD

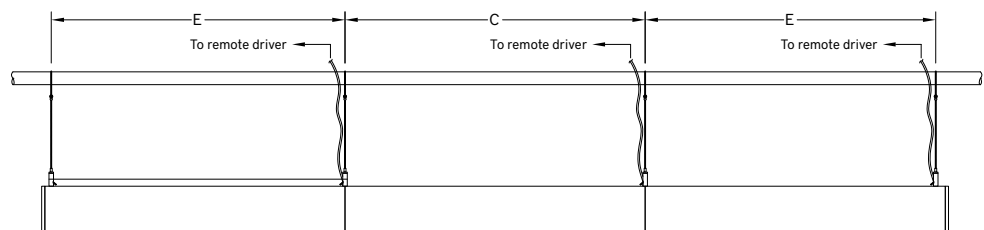
TR

Side View - Cable Suspended Single Fixture



SN

Side View - Cable Suspended Continuous Run



ST

AD

TR