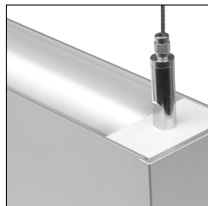
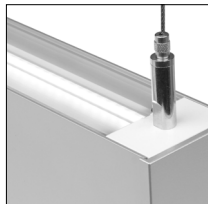
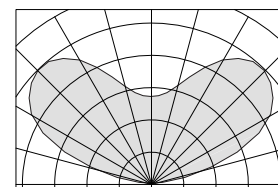
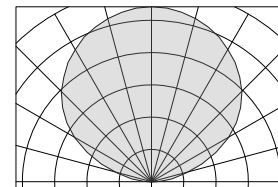
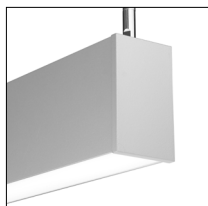


INDIRECT OPTIC

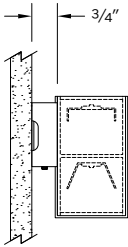
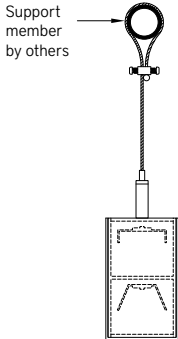
ORDERING CODE	DESCRIPTION	SPECIFICATIONS
	1 LAMBERTIAN DISTRIBUTION	Lightly frosted acrylic extrusion for Lambertian distribution.
	2 BATWING DISTRIBUTION	Clear acrylic extrusion with wide distribution optic features. For C4/C8 mount only.



DIRECT OPTIC

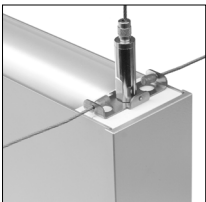
ORDERING CODE	DESCRIPTION	SPECIFICATIONS
	A FLUSH LENS	Flush frosted acrylic extrusion.
B	DROP LENS – SOLID END	1" H frosted acrylic extrusion with full height machined aluminum end cap.

MOUNTING

	ORDERING CODE	DESCRIPTION	SPECIFICATIONS
	WM	WALL MOUNT	<p>Fixture provided with 1-7/8" H x 4-1/2" W sheet aluminum brackets that project the fixture housing 3/4" from the wall surface.</p>
	C4 C8	CABLE MOUNT	<p>Fixture provided with Ø 1/16" x 48" (C4) or 96" (C8) stainless steel aircraft cables.</p> <p>Fixture wired with 60" (C4) or 108" (C8) power cable in coordinating finish.</p> <p>Includes wet rated, side exit cable grippers.</p> <p>Included hardware can be used to loop and clamp cable around support members.</p> <p>OTHER MOUNTING COMPONENTS, JUNCTION BOXES, ETC. PROVIDED BY OTHERS.</p> <p>WHEN DUAL CIRCUIT OPTION IS USED, TWO POWER CABLES ARE REQUIRED.</p> <p>FOR ADDITIONAL HANGING STABILITY, AN ACCESSORY SUPPLEMENTAL CABLE SUPPORT KIT IS AVAILABLE AND ORDERED SEPARATELY.</p>

ACCESSORIES

NOTE: Accessories ordered separately.

	ORDERING CODE	DESCRIPTION	SPECIFICATIONS
	SCK-8	SUPPLEMENTAL CABLE SUPPORT KIT, 8'	<p>Each kit includes Ø 1/16" x 96" stainless steel aircraft cable, and wet location side exit cable gripper (requires 1/4-20 threaded anchor by others).</p> <p>All fixtures manufactured with stainless bracket for attaching up to three additional Ø 1/16" aircraft cables.</p> <p>Consult factory for additional cable length options.</p>

EPA CALCULATIONS

EFFECTIVE PROJECTED AREA	LENGTH ORDER CODE	EPA
	2	0.60 ft ²
	3	0.90 ft ²
	4	1.18 ft ²
	5	1.47 ft ²
	6	1.77 ft ²
	7	2.07 ft ²
	8	2.35 ft ²

LENGTH/MOUNT DIMENSIONS

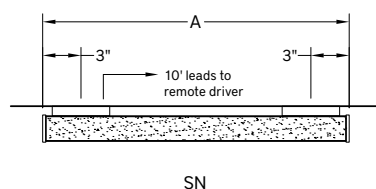
ORDERING CODE	LENGTH A	LENGTH B	LENGTH C	LENGTH D	LENGTH E
2	24-5/8"	24-7/16"	24-1/4"	23-11/16"	23-1/8"
3	36-5/8"	36-7/16"	36-1/4"	35-11/16"	35-1/8"
4	48-5/8"	48-7/16"	48-1/4"	47-11/16"	47-1/8"
5	60-5/8"	60-7/16"	60-1/4"	59-11/16"	59-1/8"
6	72-5/8"	72-7/16"	72-1/4"	71-11/16"	71-1/8"
7	84-5/8"	84-7/16"	84-1/4"	83-11/16"	83-1/8"
8	96-5/8"	96-7/16"	96-1/4"	94-11/16"	94-1/8"

RUN CONFIGURATION INFORMATION

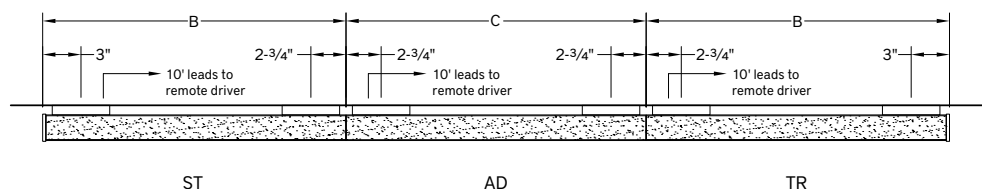
ORDERING CODE	DESCRIPTION
SN	Single
ST	Starter
AD	Adder
TR	Terminator

RUN INFORMATION

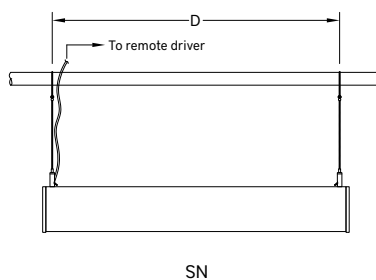
Plan View - Wall Mount Single Fixture



Plan View - Wall Mount Continuous Run



Side View - Cable Suspended Single Fixture



Side View - Cable Suspended Continuous Run

