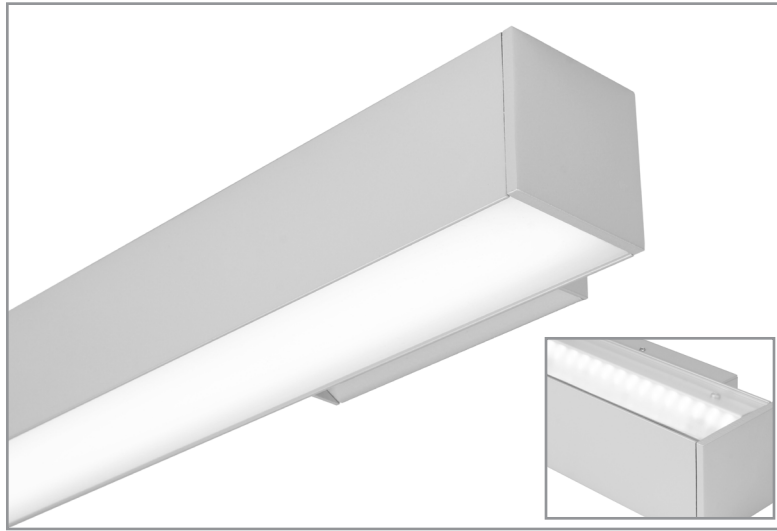


BSS722 | Mullion

2-1/4" tall mullion mount direct/indirect asymmetric LED luminaire, remote driver

Project: _____ Type: _____



FEATURES

The BSS722 is a linear direct/indirect LED luminaire with asymmetric optics for mullion or wall mount applications. The remote driven 2-1/4" square extruded aluminum housing contains specific reflector/lens optic components for direct and indirect lighting. A wide variety of driver options, light output and color temperatures are available, to maximize versatility.

SPECIFICATIONS

Fixture constructed of an extruded aluminum housing, extruded acrylic lens and machined aluminum end caps

Fixture configured with brackets for mounting to mullions or other vertical surfaces

Direct oriented fixture features an asymmetric reflector and diffuse acrylic lens

Indirect oriented fixtures feature a multi-piece reflector system and acrylic lens

Standard finishes as shown below

Available in nominal lengths of 2'-8" single fixtures and continuous runs

Fixtures wired with 10' low voltage leads

Included standard remote 120-277V driver offered with 0-10V dimming or non-dim (other dimming driver options available)

Remote mounted emergency battery backup available (ordered separately, consult factory for details)

Standard light outputs range from 525–1290 lumens per foot, depending on fixture orientation

LEDs available in 2700K, 3000K, 3500K, and 4000K, within a 3 step MacAdam ellipse, all with 90+ CRI typical

Life: 50,000 hours L₇₀

Limited five year warranty

UL and C-UL listed for dry and damp locations

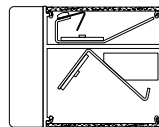
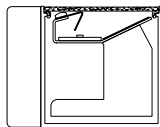
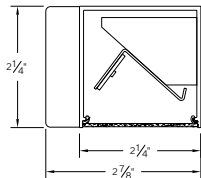


SECTION

Direct

Indirect

Direct/Indirect



PERFORMANCE

Note: All data reflects fixtures with 3500K LEDs

NOMINAL LENGTH	FIXTURE ORIENTATION	OUTPUT	LUMENS/ft.	WATTS/ft.	LUMINAIRE LUMENS	EFFICACY (LPW)
45"	Direct	L: low	525	5.4	1944	96
		R: regular	710	7.6	2646	93
		H: high	1080	12.4	4018	87
	Indirect	L: low	630	5.5	2336	114
		R: regular	850	7.7	3166	111
		H: high	1290	12.5	4806	103

BSS722 -

NOMINAL FIXTURE LENGTH*
 23: 22-5/8"
 34: 33-5/8"
 45: 44-5/8"
 56: 55-5/8"
 67: 66-5/8"
 78: 77-5/8"
 89: 88-5/8"
 RUN ‡

CORRELATED COLOR TEMPERATURE
 27: 2700K-90+ CRI
 30: 3000K-90+ CRI
 35: 3500K-90+ CRI
 40: 4000K-90+ CRI

REMOTE DRIVER
 ND: non-dimming
[Dimming]
 DM: 0-10V, 1%
 HES: Lutron EcoSystem, soft-on fade-to-black, 1%
 H2: Lutron Hi-lume 2-wire forward phase, 1%, (120V ONLY)
 EL: eldoLED ECOdrive 0-10V, 1%
 ES: eldoLED SOLOdrive 0-10V, 0.1%
 ELD: eldoLED ECOdrive DALI, 1%
 ESD: eldoLED SOLOdrive DALI, 0.1%

CIRCUIT
 1: single circuit
 2: two circuit (4' nom. length and longer)

INDIRECT LIGHT ORIENTATION
 L1: low output, asymmetric dist.– 630 lm/ft.
 R1: reg. output, asymmetric dist.– 850 lm/ft.
 H1: high output, asymmetric dist.– 1290 lm/ft.
 NA: no indirect light source
 CF: consult factory for custom configuration

DIRECT LIGHT ORIENTATION
 LA: low output, asymmetric dist.– 525 lm/ft.
 RA: reg. output, asymmetric dist.– 710 lm/ft.
 HA: high output, asymmetric dist.– 1080 lm/ft.
 NA: no direct light source
 CF: consult factory for custom configuration

RUN CONFIGURATION
 SN: single
 ST: starter
 AD: adder
 TR: terminator

MOUNT
 WM: wall mount

FINISH
 AW: architectural white (semi-matte)
 WH: white (semi-gloss)
 BL: black (semi-matte)
 MB: matte black
 ESS: environmental satin silver
 BZ: bronze
 PR: primer
 CF: consult factory for custom finish
 SA: satin anodize (may require additional lead time)

Note: Each fixture includes a remote driver matched for fixture length and light output

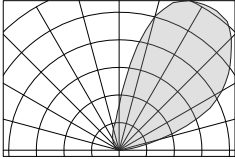
* Actual dimension dependent on run configuration

‡ Specify run length to the nearest one foot. Factory will configure using the least quantity of fixtures as close to the desired run length as possible without exceeding the length. Run to be confirmed with a shop drawing.

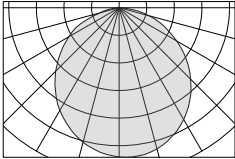
BSS722 | Mullion

2-1/4" tall mullion mount direct/indirect asymmetric LED luminaire, remote driver

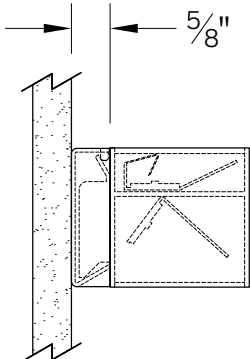
INDIRECT LIGHT CONFIGURATION

	ORDERING CODE	DESCRIPTION	SPECIFICATIONS
	L1	LOW LIGHT OUTPUT Asymmetric distribution	Multi-part asymmetric reflector system and extruded acrylic lens for indirect orientation mounting
	R1	REGULAR LIGHT OUTPUT Asymmetric distribution	
	H1	HIGH LIGHT OUTPUT Asymmetric distribution	

DIRECT LIGHT CONFIGURATION

	ORDERING CODE	DESCRIPTION	SPECIFICATIONS
	LA	LOW LIGHT OUTPUT Asymmetric distribution	Asymmetric reflector and extruded diffuse acrylic lens for direct orientation mounting
	RA	REGULAR LIGHT OUTPUT Asymmetric distribution	
	HA	HIGH LIGHT OUTPUT Asymmetric distribution	

MOUNTING

	ORDERING CODE	DESCRIPTION
	WM	<p>WALL/MULLION MOUNT</p> <p>Mounting option includes:</p> <ul style="list-style-type: none"> • 2-1/4" H x 4-3/4" W bracket projects the fixture housing 5/8" from the mounting surface • Bracket finish matches fixture finish, or ESS for satin anodize (SA) housing

BSS722 | Mullion

2-1/4" tall mullion mount direct/indirect asymmetric LED luminaire, remote driver

LENGTH/MOUNTING DIMENSIONS

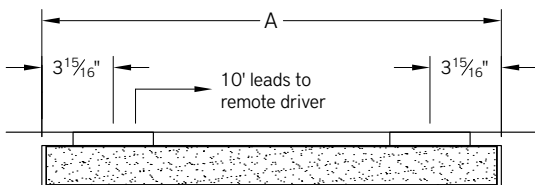
ORDERING CODE	LENGTH A	LENGTH B	LENGTH C
23	22-5/8"	22-7/16"	22-1/4"
34	33-5/8"	33-7/16"	33-1/4"
45	44-5/8"	44-7/16"	44-1/4"
56	55-5/8"	55-7/16"	55-1/4"
67	66-5/8"	66-7/16"	66-1/4"
78	77-5/8"	77-7/16"	77-1/4"
89	88-5/8"	88-7/16"	88-1/4"

RUN CONFIGURATION INFORMATION

ORDERING CODE	DESCRIPTION
SN	Single
ST	Starter
AD	Adder
TR	Terminator

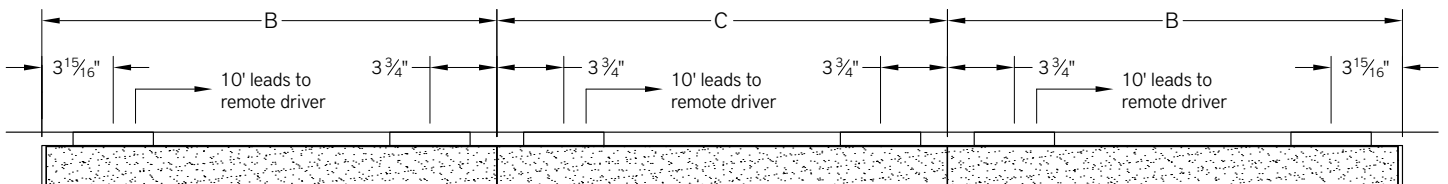
RUN INFORMATION

Plan - Wall Mount Single Fixture



SN

Plan - Wall Mount Continuous Run



ST

AD

TR