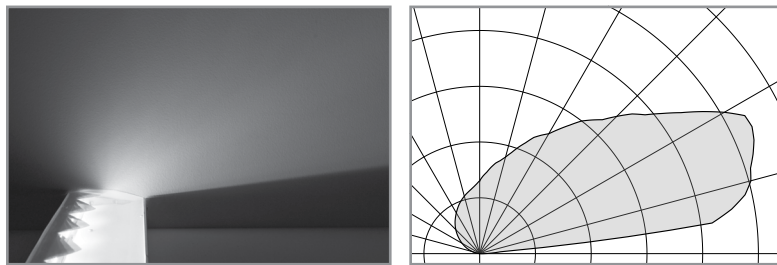
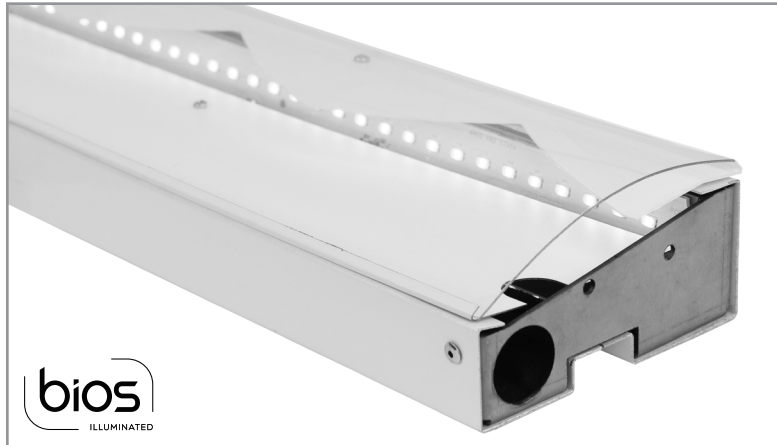


HCB22A | Swell

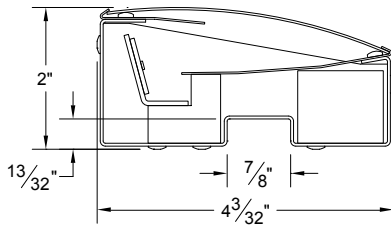
Asymmetric LED luminaire for use in manufactured cove systems, Illuminated by BIOS®



Project: _____ Type: _____



SECTION



PERFORMANCE

Note: All data reflects fixture with BIOS Static Spectrum 3500K LEDs.

NOMINAL LENGTH	OUTPUT	LUMENS/ft.	WATTS/ft.	LUMINAIRE LUMENS	EFFICACY (LPW)
4'	R: regular	585	8.2	2162	72
	H: high	780	11.3	2883	70

FEATURES

The Swell Series HCB22A is a shallow profile asymmetric LED cove luminaire, designed to integrate with a manufactured cove system and tailored for health-centric lighting installations. The heavy gauge, sheet formed housing is fitted with a primary and saw-tooth reflector to produce a smooth, uniform gradient light across the ceiling plane. A clear dust cover shields the reflector system and LED modules.

The HCB22A fixture is embedded with BIOS SkyBlue® circadian solutions to produce the healthy "blue sky" light signal needed to stimulate human circadian biology. This specific light wavelength communicates directly with human biology through a non-visual photoreceptor to regulate circadian rhythms, providing healthier sleep patterns and ultimately, better health.

SPECIFICATIONS

Fixture housing constructed of formed and riveted, pre-painted 20 gauge aluminum and heavy gauge steel sheet end caps.

The fixture housing is proportioned and formed to integrate with a manufactured cove system (consult factory for compatibility details).

The multi-reflector optic system is formed from aluminum with finishes of up to 96% reflectance.

Includes a clear acrylic dust cover.

Available in nominal lengths of 2', 3', 4' and 5'.

Fixtures provided with 18 ga. wiring harness for 6 Amp maximum load (consult factory for runs requiring multiple circuits, sensor integration, etc.).

Standard integral 120V-277V driver offered with 0-10V dimming or non-dim (other dimming driver options available).

Integral 120-277V emergency battery backup available for 4' nominal non-dim or 0-10V (consult factory for all other lengths/drivers).

Standard outputs are 585 or 780 lumens per foot.

BIOS LEDs have 80+ CRI, R9 90+ and are available in static 3000K, 3500K, 4000K and two dynamic options in 2700-3000K, 2700-3500K and 2700-4000K.

A supplemental optic blending film is provided for fixtures that terminate at a perpendicular wall.

Life: 50,000 hours L₇₀.

UL and C-UL listed for dry and damp locations.

Limited five year warranty.



HCB22A -

FIXTURE LENGTH	CORRELATED COLOR TEMPERATURE		DRIVER		LIGHT OUTPUT (lumens per foot)	OPTIONS
22: 22-1/4"	[BIOS static]	[BIOS dynamic TW]	ND: non-dimming	EL: eldoLED ECOdrive 0-10V, 1%	R: regular – 585	ED: emergency driver (4' nom. non-dim or 0-10V only)
33: 33-1/4"	BS30: 3000K	BDTW30: 2700K-3000K	[Dimming]	ES: eldoLED SOLOdrive 0-10V, 0.1%	H: high – 780	
44: 44-1/4"	BS35: 3500K	BDTW35: 2700K-3500K	D: 0-10V, 1%	ELD: eldoLED ECOdrive DALI, 1% *	CF: consult factory for custom output	
55: 55-1/4"	BS40: 4000K	BDTW40: 2700K-4000K	DTR: triac, 1%, (120V ONLY) *	ESD: eldoLED SOLOdrive DALI, 0.1% *		
	[BIOS dynamic]		DLV: electronic low voltage, 1%, (120V ONLY) *			
	BD30: 2700K-3000K		HES: Lutron EcoSystem, soft-on/fade-to-black, 1% *			
	BD35: 2700K-3500K					
	BD40: 2700K-4000K					

* Consult factory for dimming protocols other than 0-10V.

HCB22A | Swell

Asymmetric LED luminaire for use in manufactured cove systems, Illuminated by BIOS®

CORRELATED COLOR TEMPERATURE

Consult factory for specifics when using dimming protocols other than 0-10V.
For additional information about BIOS LED modules, visit www.bartcolighting.com/series/swell/

ORDERING CODE	MODULE TYPE	LIGHT EFFECT	CONTROL METHOD	
BS30 BS35 BS40	BIOS Static	<ul style="list-style-type: none"> Static color temperature 490nm SkyBlue® LED is always on. 	<ul style="list-style-type: none"> Non-dimming or 0-10V No BIO-Dimming module required 	
BD30 BD35 BD40	BIOS Dynamic	<ul style="list-style-type: none"> 490nm SkyBlue® LED can be BIO dimmed out with most driver/dimmer combinations. 490nm SkyBlue® wavelengths removed through first 20% of dimming range, followed by a CCT transition to 2700K. 	<ul style="list-style-type: none"> 0-10V Includes integral Bio-Dimming module 	
BDTW30 BDTW35 BDTW40	BIOS Dynamic Tunable White	<ul style="list-style-type: none"> CCT and Light output can be controlled separately with appropriate driver. 3000K, 3500K and 4100K modules all transition to 2700K when dimmed. 	<ul style="list-style-type: none"> 0-10V two-channel driver No BIO-Dimming module required 	

OPTIONS

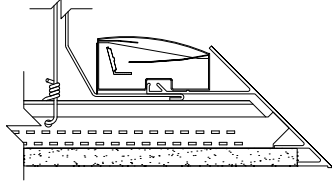
	ORDERING CODE	DESCRIPTION	SPECIFICATIONS
	ED	EMERGENCY LED DRIVER	<ul style="list-style-type: none"> Universal 120-277V input voltage emergency driver delivers initial minimum power of 10W for 90 minutes. Available for 4' nominal length non-dim or 0-10V fixture only (consult factory for all other lengths/drivers). Provided with combination test switch/indicator light for remote mount installation.

HCB22A | Swell

Asymmetric LED luminaire for use in manufactured cove systems, Illuminated by BIOS®

MOUNTING

DESCRIPTION



- Use appropriate fastener through $\varnothing \frac{3}{16}$ " holes in housing.
- Fixture housing engages with an aligning feature within the cove system.

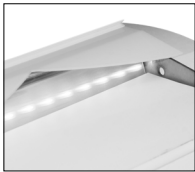
NOTE: A minimum distance of 10" is suggested from the top of the fixture to the ceiling surface for best blending of light.

ACCESSORY

ORDERING CODE

DESCRIPTION

SPECIFICATIONS



HCB22-DF

END OF RUN
DIFFUSION FILM

- 8" long piece of diffusion film blends and softens the light distribution on the end wall surfaces.