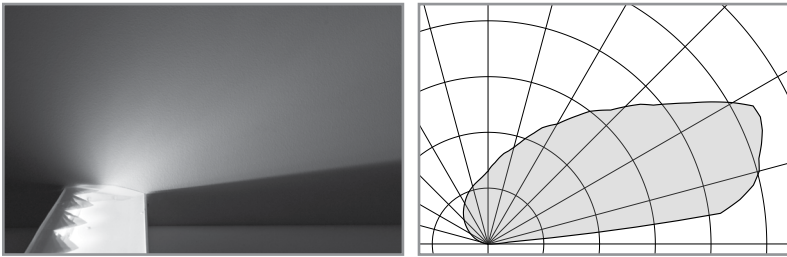
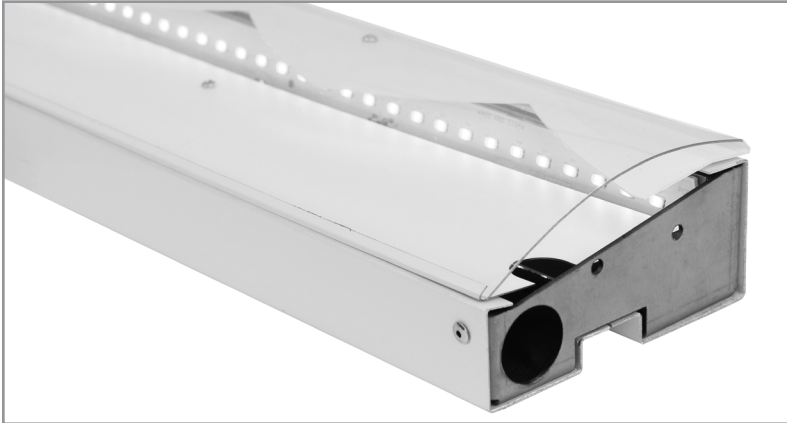


# BSS120A | Cove

Asymmetric LED luminaire for use in manufactured cove systems



Project: \_\_\_\_\_ Type: \_\_\_\_\_



## FEATURES

The BSS120A is a shallow profile LED luminaire with high performance asymmetric light distribution, designed to integrate with a manufactured cove system (consult factory for compatibility details). The heavy gauge, sheet formed housing is fitted with a primary and saw-tooth reflector to produce a smooth, uniform gradient light across the ceiling plane. A clear dust cover shields the reflector system and 90+ CRI LED modules.

Fixture with certain options available for 7-Day QuickShip.

## SPECIFICATIONS

Fixture housing constructed of formed and riveted, pre-painted 20 gauge aluminum and heavy gauge steel sheet end caps.

The fixture housing is proportioned and formed to integrate with a manufactured cove system (consult factory for compatibility details).

The multi-reflector optic system is formed from sheet aluminum with finishes of up to 96% reflectance.

Includes a clear acrylic dust cover.

Available in nominal lengths of 2', 3', 4' and 5'.

Fixtures provided with 18 ga. wiring harness for 6 Amp maximum load (consult factory for runs requiring multiple circuits, sensor integration, etc.).

Standard integral 120V-277V driver offered with 0-10V dimming or non-dim (other dimming driver options available).

Integral 120-277V emergency battery backup available for 4' nominal non-dim or 0-10V (consult factory for all other lengths/drivers).

Standard outputs are 445, 680 and 785 lumens per foot.

LEDs available in 2700K, 3000K, 3500K, and 4000K, within a 3 step MacAdam ellipse, all with 90+ CRI typical.

A supplemental optic blending film is provided for fixtures that terminate at a perpendicular wall.

Life: 50,000 hours L<sub>70</sub>.

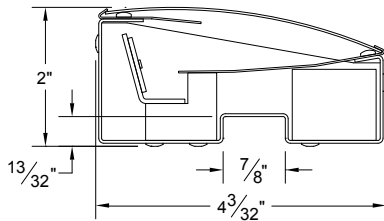
UL and C-UL listed for dry and damp locations.

Limited five year warranty.



Highlighted fields denote QuickShip Options. See complete 7-Day QuickShip Terms and Conditions available at [www.bartcolighting.com/quickship-products/](http://www.bartcolighting.com/quickship-products/). Purchase order must reference "QuickShip".

## SECTION



## PERFORMANCE

Note: All data reflects fixtures with 3500K LEDs.

NOMINAL LENGTH	OUTPUT	LUMENS/ft.	WATTS/ft.	LUMINAIRE LUMENS	EFFICACY (LPW)
4'	L: low	445	5.6	1641	79
	R: regular	600	7.9	2211	76
	H: high	785	11.0	2896	72



## BSS120A -

<p><b>FIXTURE LENGTH</b></p> <p>22: 22-1/4"</p> <p>33: 33-1/4"</p> <p>44: 44-1/4"</p> <p>55: 55-1/4"</p>	<p><b>CORRELATED COLOR TEMPERATURE</b></p> <p>27: 2700K-90+ CRI</p> <p>30: 3000K-90+ CRI</p> <p>35: 3500K-90+ CRI</p> <p>40: 4000K-90+ CRI</p>	<p><b>DRIVER</b></p> <p>ND: non-dimming</p> <p><b>[Dimming]</b></p> <p>D: 0-10V, 1%</p> <p>DTR: triac, 1%, (120V ONLY)</p> <p>DLV: electronic low voltage, 1%, (120V ONLY)</p> <p>HES: Lutron EcoSystem, soft-on/fade-to-black, 1%</p>	<p><b>LIGHT OUTPUT (lumens per foot)</b></p> <p>L: low - 445</p> <p>R: regular - 600</p> <p>H: high - 785</p> <p>CF: consult factory for custom output</p>	<p><b>OPTIONS</b></p> <p>ED: emergency driver (4' non-dim or 0-10V only)</p>
--	--	--	--	--

## OPTIONS

ORDERING CODE

DESCRIPTION

SPECIFICATIONS



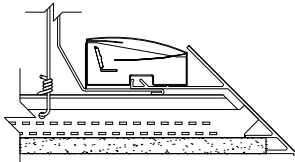
ED

EMERGENCY LED DRIVER

- Universal 120-277V input voltage emergency driver delivers initial minimum power of 10W for 90 minutes.
- Available for 4' nominal length non-dim or 0-10V fixture only (consult factory for all other lengths/drivers).
- Provided with combination test switch/indicator light for remote mount installation.

## MOUNTING

DESCRIPTION



- Fixture housing engages with an aligning feature within the cove system.

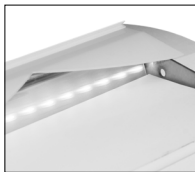
NOTE: A minimum distance of 10" is suggested from the top of the fixture to the ceiling surface for best blending of light.

## ACCESSORY

ORDERING CODE

DESCRIPTION

SPECIFICATIONS



BSS120-DF

END OF RUN  
DIFFUSION FILM

- 8" long piece of diffusion film blends and softens the light distribution on the end wall surfaces.