

HCB12 | Swell

2" wide direct/indirect LED luminaire, Illuminated by BIOS®



Project: _____ Type: _____



shown with flush lens option

FEATURES

The Swell Series HCB12 is a linear LED luminaire tailored for health-centric lighting installations. The 2" wide by 3-1/2" high extruded aluminum housing is offered for wall or cable suspended mounting and variety of optic options. The HCB12 is Controls Capable, being offered with a variety of integrated control options.

The HCB12 fixture is embedded with BIOS SkyBlue® circadian solutions to produce the healthy "blue sky" light signal needed to stimulate human circadian biology. This specific light wavelength communicates directly with human biology through a non-visual photoreceptor to regulate circadian rhythms, providing healthier sleep patterns and ultimately, better health.

SPECIFICATIONS

Fixture constructed of an extruded aluminum housing, extruded acrylic lenses and machined aluminum end caps.

Model variations offered for wall mount and cable suspended applications.

Indirect optic options include Lambertian or batwing distributions while direct options include flush and drop frosted lenses, acrylic Fresnel wall wash lens (for cable mount fixtures) and flat blade louver.

Standard finishes as shown below.

Available in nominal lengths of 2'-8' single fixtures and continuous runs.

Basic continuous run fixtures provided with 18 ga. wiring harness for 6 Amp maximum load (consult factory for runs requiring multiple circuits, sensor integration, etc.).

Standard integral 120-277V driver offered with 0-10V dimming or non-dim.

Integral 120-277V emergency battery backup available for 6' or 8' nominal, single circuit non-dim or 0-10V (consult factory for all other lengths/drivers).

Standard light outputs range from 680 – 950 lumens per foot for the direct source and 815 – 1175 lumens per foot for the indirect source, depending on optic options.

BIOS LEDs have 80+ CRI, R9 90+ and are available in static 3000K, 3500K, 4000K and two dynamic options in 2700–3000K, 2700–3500K and 2700–4000K.

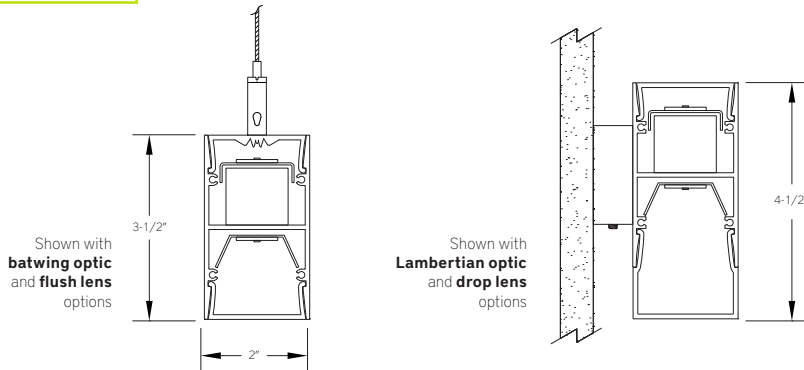
Bartco Lighting Controls Capable fixture available with integrated controls from a variety of suppliers.

Life: 50,000 hours L₇₀.

Limited five year warranty.

UL and C-UL listed for dry and damp locations.

SECTION



PERFORMANCE

| NOMINAL LENGTH | OPTIC CONFIGURATION | OUTPUT | LUMENS/ft. | WATTS/ft. | LUMINAIRE LUMENS | EFFICACY (LPW) |
|----------------|----------------------------------|------------|------------|-----------|------------------|----------------|
| 4' | Indirect – Lambertian | R: regular | 880 | 8.0 | 3280 | 110 |
| | | H: high | 1175 | 11.0 | 4373 | 107 |
| | Indirect – batwing | R: regular | 815 | 8.0 | 3022 | 102 |
| | | H: high | 1085 | 11.0 | 4029 | 99 |
| | Direct – flush lens | R: regular | 680 | 8.1 | 2520 | 84 |
| | | H: high | 905 | 11.1 | 3360 | 81 |
| | Direct – drop lens, luminous end | R: regular | 710 | 8.1 | 2643 | 88 |
| | | H: high | 950 | 11.1 | 3524 | 85 |

Note: All data reflects fixture with BIOS Static Spectrum 3500K LEDs.



HCB12 | Swell

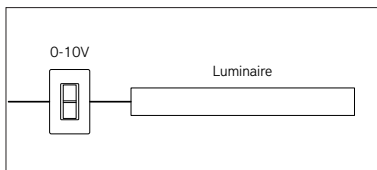
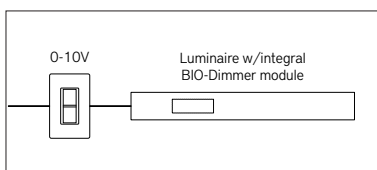
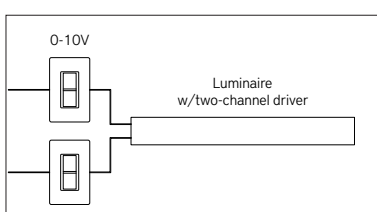
2" wide direct/indirect LED luminaire, illuminated by BIOS®

| HCB12 - | | | | | | | | | | |
|--|---|---|--|--|---|--|---|--|--|---|
| NOMINAL FIXTURE LENGTH* 2: 22-5/8" 3: 33-5/8" 4: 44-5/8" 5: 55-5/8" 6: 66-5/8" 7: 77-5/8" 8: 88-5/8" | CORRELATED COLOR TEMPERATURE [BIOS static] BS30: 3000K BS35: 3500K BS40: 4000K [BIOS dynamic] BD30: 2700K-3000K BD35: 2700K-3500K BD40: 2700K-4000K [BIOS dynamic TW] BDTW30: 2700K-3000K BDTW35: 2700K-3500K BDTW40: 2700K-4000K | CIRCUIT 1: single circuit 2: two circuit (4' nom. length and longer) | DIRECT LIGHT OUTPUT (lumens per foot w/optic option C) R: regular – 710 H: high – 950 CF: consult factory for custom output | DIRECT OPTIC A: flush lens B: drop lens – solid end C: drop lens – luminous end D: louver E: wall wash | INDIRECT LIGHT OUTPUT (lumens per foot w/optic option 1) R: regular – 880 H: high – 1175 CF: consult factory for custom output | DRIVER ND: non-dimming [Dimming] D: 0-10V, 1% DTR: triac, 1%, (120V ONLY) ** DLV: electronic low voltage, 1%, (120V ONLY) ** HES: Lutron EcoSystem, soft-on/fade-to-black, 1% ** EL: eldoLED ECOdrive 0-10V, 1% ES: eldoLED SOLOdrive 0-10V, 0.1% ELD: eldoLED ECOdrive DALI, 1% ** ESD: eldoLED SOLOdrive DALI, 0.1% ** | MOUNT WM: wall mount C4: cable mount 4' cable length C8: cable mount 8' cable length CF: consult factory for custom mounting | FINISH AW: architectural white (semi-matte) WH: white (semi-gloss) BL: black (semi-matte) MB: matte black ESS: environmental satin silver BZ: bronze PR: primer CF: consult factory for custom finish SA: satin anodize (may require additional lead time) | INDIRECT OPTIC 1: general Lambertian distribution 2: batwing distribution | OPTIONS ED: emergency driver (6' or 8' SINGLE CIRCUIT, non-dim or 0-10V only) WS1A: Wattstopper FS-205, 100%-0% ‡ WS1B: Wattstopper FS-205, 100%-50% ‡ EN1: Enlighted FS-D22 ‡ ES4: Philips EasySense SNS211 MC ‡ CA1: Casambi CBU-A2D ‡ NL1: nLight RES7 ‡ NL2: nLight RIO ‡ LA1: Lutron Athena A-WN-D01-RF-WH ‡ LA2: Lutron Athena A-WN-D01-OCC-WH ‡ |

* Actual dimension dependent on run configuration.
 ** Consult factory for dimming protocols other than 0-10V.
 ‡ See Integrated Controls section for driver compatibility information.

CORRELATED COLOR TEMPERATURE

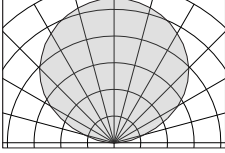
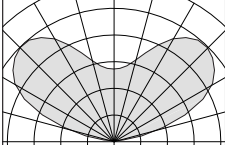
Consult factory for specifics when using dimming protocols other than 0-10V.
 For additional information about BIOS LED modules, visit www.bartcolighting.com/series/swell/

| ORDERING CODE | MODULE TYPE | LIGHT EFFECT | CONTROL METHOD | Diagram |
|----------------------------|----------------------------|---|--|---|
| BS30 BS35 BS40 | BIOS Static | <ul style="list-style-type: none"> Static color temperature 490nm SkyBlue® LED is always on. | <ul style="list-style-type: none"> Non-dimming or 0-10V No BIO-Dimming module required |  |
| BD30 BD35 BD40 | BIOS Dynamic | <ul style="list-style-type: none"> 490nm SkyBlue® LED can be BIO dimmed out with most driver/dimmer combinations. 490nm SkyBlue® wavelengths removed through first 20% of dimming range, followed by a CCT transition to 2700K. | <ul style="list-style-type: none"> 0-10V Includes integral Bio-Dimming module |  |
| BDTW30 BDTW35 BDTW40 | BIOS Dynamic Tunable White | <ul style="list-style-type: none"> CCT and Light output can be controlled separately with appropriate driver. 3000K, 3500K and 4100K modules all transition to 2700K when dimmed. | <ul style="list-style-type: none"> 0-10V two-channel driver No BIO-Dimming module required |  |

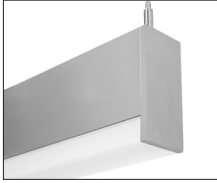

HCB12 | Swell

2" wide direct/indirect LED luminaire, Illuminated by BIOS®

INDIRECT OPTIC

| | ORDERING CODE | DESCRIPTION | SPECIFICATIONS |
|---|---------------|-------------------------|---|
|  | 1 | LAMBERTIAN DISTRIBUTION | Frosted extruded acrylic lens for Lambertian distribution. |
|  | 2 | BATWING DISTRIBUTION | Clear extruded acrylic with wide distribution optic features. |

DIRECT OPTIC

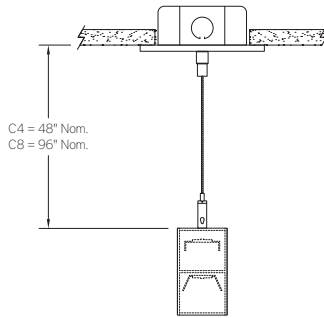
| | ORDERING CODE | DESCRIPTION | SPECIFICATIONS |
|---|---------------|--------------------------|--|
|  | A | FLUSH LENS | Flush frosted acrylic extrusion. |
|  | B | DROP LENS – SOLID END | 1" H frosted acrylic extrusion with full height aluminum end cap. |
|  | C | DROP LENS – LUMINOUS END | 1" H frosted acrylic extrusion with matching acrylic end cap. |
| | D | LOUVER | 2" W Flat blade louver with 5/8" blades at 7/8" spacing, formed from sheet steel. Finish is Environmental Satin Silver (consult factory for alternate finishes). Supplied with light diffusion film. |
| | E | WALL WASH | Acrylic extrusion with optically engineered Fresnel prisms for wall wash applications. Available for Cable (C4, C8) mounting only. Optimized for placement 18"–24" from a wall surface. Uniformity ratio as low as 4:1. |

HCB12 | Swell

2" wide direct/indirect LED luminaire, illuminated by BIOS®

MOUNTING

ORDERING CODE DESCRIPTION



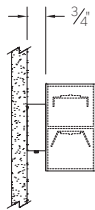
C4 and C8

CABLE MOUNT

Mounting option includes:

- Ø 1/16" x 48" (C4) or 96" (C8) aircraft cables
- 60" (C4) or 108" (C8) power cable (in coordinating finish)
- Bracket bars
- Ø 5" white canopies
- Ceiling couplers
- Side exit cable grippers

NOTE: WHEN DUAL CIRCUIT OPTION IS USED, TWO POWER CABLES ARE REQUIRED



WM

WALL MOUNT

- 1-7/8"H x 4-1/2"W sheet aluminum bracket projects the fixture housing 3/4" from the wall surface.
- Bracket finish matches fixture finish, or ESS for satin anodize (SA) housing.

OPTIONS

ORDERING CODE DESCRIPTION SPECIFICATIONS

ED EMERGENCY LED DRIVER

- Universal 120-277V input voltage emergency driver delivers initial minimum power of 10W for 90 minutes.
- Available for SINGLE CIRCUIT **6'** or **8'** nominal length non-dim or 0-10V fixture and direct light source only (consult factory for all other lengths/drivers).







HCB12 | Swell

2" wide direct/indirect LED luminaire, Illuminated by BIOS®

OPTIONS - INTEGRATED CONTROLS

Note: Control option takes up 4" of the overall lens length.
 For "A", "D" and "E" optic option, controls are mounted to flush filler piece.
 For "B" and "C" optic option, controls are mounted to 1" H sheet formed cover.



| | ORDERING CODE | LIGHT OUTPUT SETTING | MODEL | CONTROL PROTOCOL | FUNCTIONS | COMPATIBLE DRIVERS |
|---|---------------|--------------------------|-------------------|--------------------|--|---|
|  WATTSTOPPER® | WS1A | 100% – 0% ¹ | FS-205 | N/A | PIR occupancy and light level sensor. | For use with on/off or 0-10V dimming drivers only. |
| | WS1B | 100% – 50% ¹ | | | | |
|  | EN1 | Set during commissioning | FS-D22 | Bluetooth Wireless | PIR occupancy, ambient light sensing, daylight harvesting, and environment monitoring for use within an Enlighted control network. | Provided with Advance sensor ready series 0-10V dimming drivers. |
|  EasySense | ES4 | Set during commissioning | SNS211 MC | Bluetooth Wireless | Occupancy, daylight harvesting and task tuning sensor with advance grouping, for use within a MasterConnect network. | Provided with Advance sensor ready series 0-10V dimming drivers. |
|  | CA1 | Set during commissioning | CBU-A2D | Bluetooth Wireless | 0-10V/DALI driver controller, for use within a Casambi ecosystem. | For use with 0-10V or DALI drivers. Consult factory for details. |
|  | NL1 | Set during commissioning | RES7 ² | Radio Wireless | Dimming, PIR occupancy detection and daylight harvesting, for use within an nLight AIR network. | Provided with Advance sensor ready series or eldoLED 0-10V drivers. |
| | NL2 | | RIO ² | | Dimming, for use within an nLight AIR network. | |
|  | LA1 | Set during commissioning | A-WN-D01-RF-WH | Radio Wireless | Dimming only for use with an Athena control system. | Provided with Advance sensor ready series or eldoLED 0-10V or eldoLED DALI-2 drivers. |
| | LA2 | | A-WN-D01-OCC-WH | | Dimming, PIR occupancy and daylight sensor for use with an Athena control system. | |

1. Consult factory for custom light output setting.

2. Consult your Acuity representative for application-specific model number.

HCB12 | Swell

2" wide direct/indirect LED luminaire, illuminated by BIOS®

LENGTH/MOUNTING DIMENSIONS

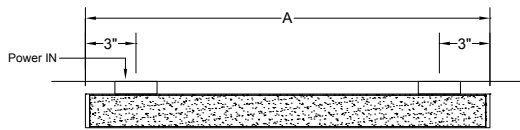
| ORDERING CODE | LENGTH A | LENGTH B | LENGTH C | LENGTH D | LENGTH E |
|---------------|----------|----------|----------|----------|----------|
| 2 | 22-5/8" | 22-3/8" | 22-1/8" | 21-1/8" | 21-5/8" |
| 3 | 33-5/8" | 33-3/8" | 33-1/8" | 32-1/8" | 32-5/8" |
| 4 | 44-5/8" | 44-3/8" | 44-1/8" | 43-1/8" | 43-5/8" |
| 5 | 55-5/8" | 55-3/8" | 55-1/8" | 54-1/8" | 54-5/8" |
| 6 | 66-5/8" | 66-3/8" | 66-1/8" | 65-1/8" | 65-5/8" |
| 7 | 77-5/8" | 77-3/8" | 77-1/8" | 76-1/8" | 76-5/8" |
| 8 | 88-5/8" | 88-3/8" | 88-1/8" | 87-1/8" | 87-5/8" |

RUN CONFIGURATION INFORMATION

| ORDERING CODE | DESCRIPTION |
|---------------|-------------|
| SN | Single |
| ST | Starter |
| AD | Adder |
| TR | Terminator |

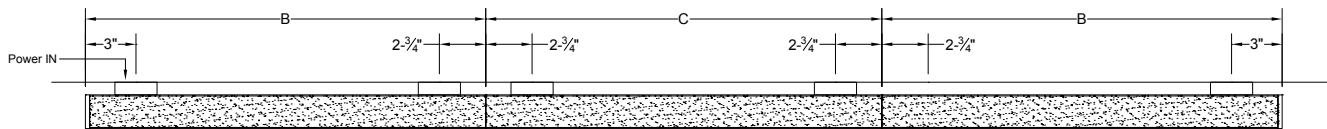
RUN INFORMATION

Plan - Wall Mount Single Fixture Option



SN

Plan - Wall Mount Continuous Run Option

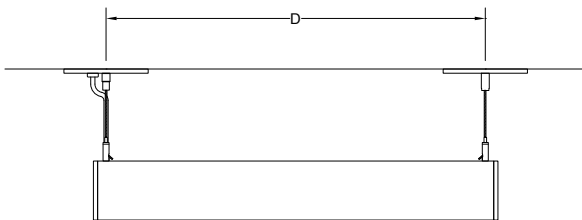


ST

AD

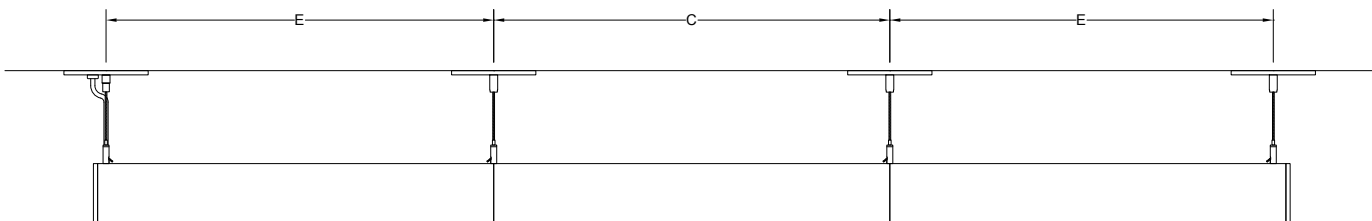
TR

Side View - Cable Suspended Single Fixture Option



SN

Side View - Cable Suspended Continuous Run Option



ST

AD

TR