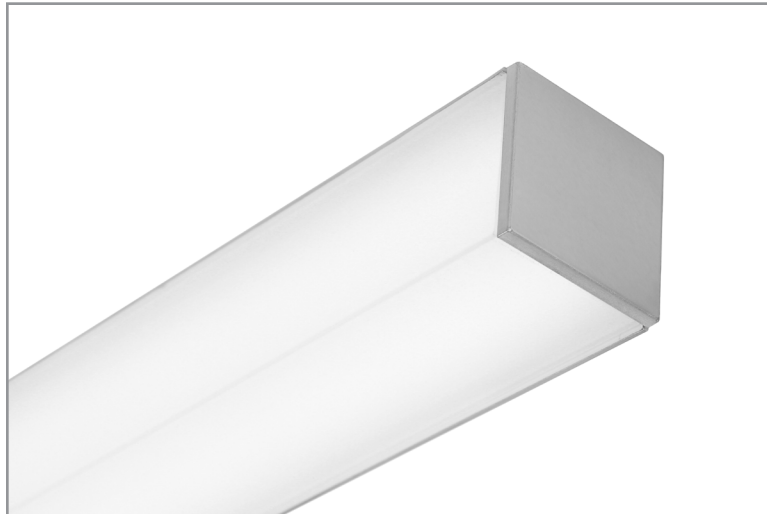


BSS745 | WEDGE

2" square corner mount LED luminaire

Project: _____ Type: _____



Highlighted fields denote QuickShip Options. See complete 10-Day QuickShip Terms and Conditions available at www.bartcolighting.com/quickship-products/. Purchase order must reference "QuickShip".

FEATURES

The BSS745 is a corner mount, linear LED luminaire well suited for perimeter and stairwell lighting. The 2" x 2" extruded aluminum housing tucks into architectural junctures and is fitted with a two-sided, frosted acrylic lens. When installed, virtually no fixture housing is visible, leaving the evenly illuminated lens to make a strong visual statement. Fixture with certain options available for 10-Day QuickShip.

SPECIFICATIONS

Fixture constructed of an extruded aluminum housing, frosted, extruded acrylic lens and machined aluminum end caps

Standard finishes as shown below

Available in nominal lengths of 2'–8' single fixtures and continuous runs

Wired with 10' low voltage leads

Included standard remote 120-277V driver offered with 0-10V dimming or non-dim (other dimming driver options available)

Remote mounted emergency battery backup available (ordered separately, consult factory for details)

Standard light outputs are 600, 815 or 1240 lumens per foot

LEDs available in 3000K, 3500K, and 4000K, within a 3 step MacAdam ellipse, all with 90+ CRI typical

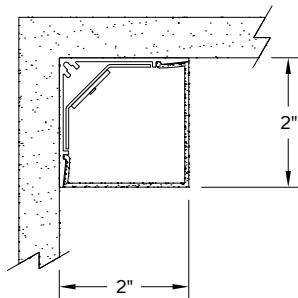
Life: 50,000 hours L₇₀

Limited five year warranty

UL and C-UL listed for dry and damp locations



SECTION



PERFORMANCE

Note: All data reflects fixtures with 3500K LEDs

NOMINAL LENGTH	OUTPUT	LUMENS/ft.	WATTS/ft.	LUMINAIRE LUMENS	EFFICACY (LPW)
4'	L: low	600	5.1	2400	118
	R: regular	815	7.2	3267	114
	H: high	1240	11.6	4961	107

BSS745 -

NOMINAL FIXTURE LENGTH*	CORRELATED COLOR TEMPERATURE	REMOTE DRIVER	LIGHT OUTPUT (lumens per foot)	MOUNT	RUN CONFIGURATION	FINISH
23: 22-5/8"	27: 2700K-90+ CRI	ND: non-dimming	L: low – 600	SM: surface mount	SN: single	AW: architectural white (semi-matte)
28: 28-1/8"	30: 3000K-90+ CRI	[Dimming]	R: regular – 815	CF: consult factory for custom mounting	ST: starter	WH: white (semi-gloss)
34: 33-5/8"	35: 3500K-90+ CRI	D: 0-10V, 1%	H: high – 1240		AD: adder	BL: black (semi-matte)
39: 39-1/8"	40: 4000K-90+ CRI	DTR: triac, 1%, (120V ONLY)	CF: consult factory for custom output		TR: terminator	MB: matte black
45: 44-5/8"		DLV: electronic low voltage, 1%, (120V ONLY)				ESS: environmental satin silver
50: 50-1/8"		HES: Lutron EcoSystem, soft-on/fade-to-black, 1%				BZ: bronze
56: 55-5/8"	78: 77-5/8"	EL: eldoLED ECOdrive 0-10V, 1%				PR: primer
61: 61-1/8"	83: 83-1/8"	ES: eldoLED SOLOdrive 0-10V, 0.1%				CF: consult factory for custom finish
67: 66-5/8"	89: 88-5/8"	ELD: eldoLED ECOdrive DALI, 1%				SA: satin anodize (may require additional lead time)
72: 72-1/8"	RUN ‡	ESD: eldoLED SOLOdrive DALI, 0.1%				

Note: Each fixture includes a remote driver matched for fixture length and light output.

* Actual dimension dependent on run configuration.

‡ Specify run length to the nearest 1". Factory will configure using the least quantity of fixtures as close to the desired run length as possible. Run to be confirmed with a shop drawing.

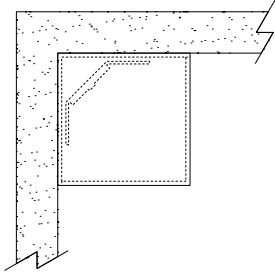
BSS745 | WEDGE

2" square corner mount LED luminaire

MOUNTING

ORDERING CODE

DESCRIPTION



SM

SURFACE MOUNT

- Use appropriate length #8 bugle head fastener through $\varnothing 7/32$ " holes in housing
- 10' low voltage leads exit out one of two provided feed holes at an end

BSS745 | WEDGE

2" square corner mount LED luminaire

LENGTH / MOUNTING DIMENSIONS

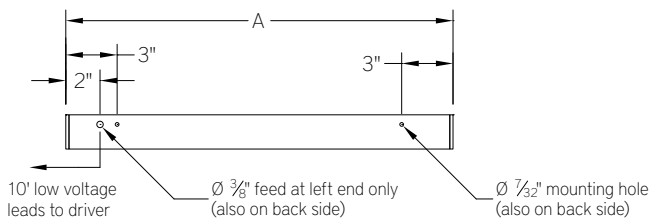
ORDERING CODE	LENGTH A	LENGTH B	LENGTH C
23	22-5/8"	22-7/16"	22-1/4"
28	28-1/8"	27-15/16"	27-3/4"
34	33-5/8"	33-7/16"	33-1/4"
39	39-1/8"	38-15/16"	38-3/4"
45	44-5/8"	44-7/16"	44-1/4"
50	50-1/8"	49-15/16"	49-3/4"
56	55-5/8"	55-7/16"	55-1/4"
61	61-1/8"	60-15/16"	60-3/4"
67	66-5/8"	66-7/16"	66-1/4"
72	72-1/8"	71-15/16"	71-3/4"
78	77-5/8"	77-7/16"	77-1/4"
83	83-1/8"	82-15/16"	82-3/4"
89	88-5/8"	88-7/16"	88-1/4"

RUN CONFIGURATION INFORMATION

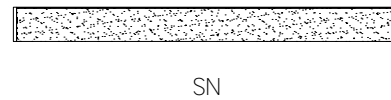
ORDERING CODE	DESCRIPTION
SN	Single
ST	Starter
AD	Adder
TR	Terminator

RUN INFORMATION

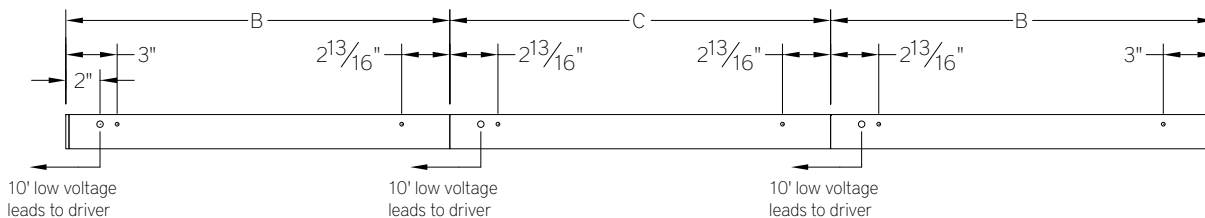
Top View - Surface Mount Single Fixture Option



Front View - Surface Mount Single Fixture Option



Top View - Surface Mount Continuous Fixture Option



Front View - Surface Mount Continuous Fixture Option

