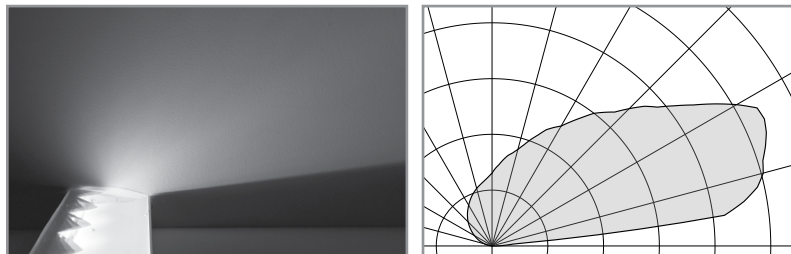
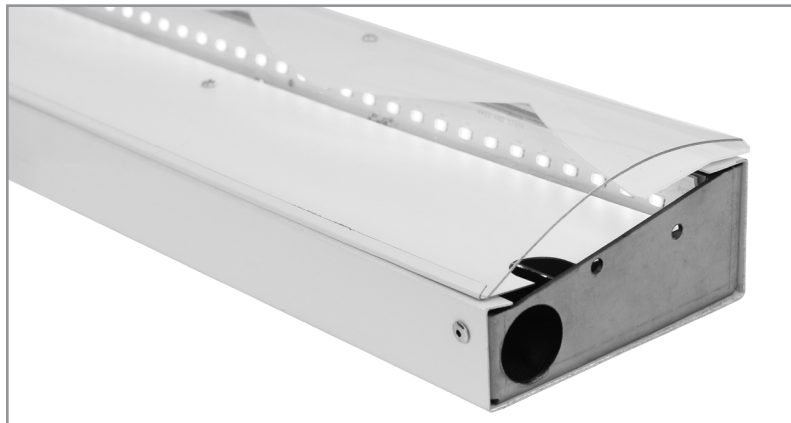


# BSS120 | Cove

Asymmetric cove mount LED luminaire



Project: \_\_\_\_\_ Type: \_\_\_\_\_



## FEATURES

The BSS120 is a shallow profile LED luminaire for cove applications requiring quality asymmetric light distribution. The heavy gauge, sheet formed housing is fitted with a primary and saw-tooth reflector to produce a smooth, uniform gradient light across the ceiling plane. A clear dust cover shields the reflector system and 90+ CRI LED modules.

Fixture with certain options available for 7-Day QuickShip.

## SPECIFICATIONS

Fixture housing constructed of formed and riveted, pre-painted 20 gauge aluminum and heavy gauge steel sheet end caps.

The multi-reflector optic system is formed from sheet aluminum with finishes of up to 96% reflectance.

Includes a clear acrylic dust cover.

Available in nominal lengths of 2', 3', 4' and 5'.

Fixtures provided with 18 ga. wiring harness for 6 Amp maximum load (consult factory for runs requiring multiple circuits, sensor integration, etc.).

Standard integral 120V-277V driver offered with 0-10V dimming or non-dim (other dimming driver options available).

Integral 120-277V emergency battery backup available for 4' nominal non-dim or 0-10V (consult factory for all other lengths/drivers).

Standard outputs are 445, 680 and 785 lumens per foot.

LEDs available in 2700K, 3000K, 3500K, and 4000K, within a 3 step MacAdam ellipse, all with 90+ CRI typical.

A supplemental optic blending film is provided for fixtures that terminate at a perpendicular wall.

Life: 50,000 hours L<sub>70</sub>.

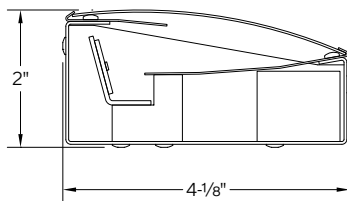
UL and C-UL listed for dry and damp locations.

Limited five year warranty.



Highlighted fields denote QuickShip Options. See complete 7-Day QuickShip Terms and Conditions available at [www.bartcolighting.com/quickship-products/](http://www.bartcolighting.com/quickship-products/). Purchase order must reference "QuickShip".

## SECTION



## PERFORMANCE

Note: All data reflects fixtures with 3500K LEDs.


NOMINAL LENGTH	OUTPUT	LUMENS/ft.	WATTS/ft.	LUMINAIRE LUMENS	EFFICACY (LPW)
4'	L: low	445	5.6	1641	79
	R: regular	600	7.9	2211	76
	H: high	785	11.0	2896	72



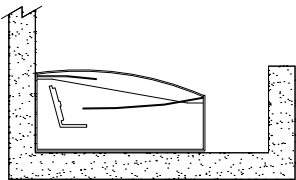
## BSS120 -

<b>FIXTURE LENGTH</b> 22: 22-1/4" 33: 33-1/4" 44: 44-1/4" 55: 55-1/4"	<b>CORRELATED COLOR TEMPERATURE</b> 27: 2700K-90+ CRI 30: 3000K-90+ CRI 35: 3500K-90+ CRI 40: 4000K-90+ CRI	<b>DRIVER</b> ND: non-dimming <b>[Dimming]</b> D: 0-10V, 1% DTR: triac, 1%, (120V ONLY) DLV: electronic low voltage, 1%, (120V ONLY) HES: Lutron EcoSystem, soft-on/fade-to-black, 1%	EL: eldoLED ECOdrive 0-10V, 1% ES: eldoLED SOLOdrive 0-10V, 0.1% ELD: eldoLED ECOdrive DALI, 1% ESD: eldoLED SOLOdrive DALI, 0.1%	<b>LIGHT OUTPUT (lumens per foot)</b> L: low – 445 R: regular – 600 H: high – 785 CF: consult factory for custom output	<b>OPTIONS</b> ED: emergency driver (4' non-dim or 0-10V only)
---	---	---	--	---	---

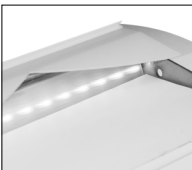
## OPTIONS

	ORDERING CODE	DESCRIPTION	SPECIFICATIONS
	ED	EMERGENCY LED DRIVER	<ul style="list-style-type: none"> <li>• Universal 120-277V input voltage emergency driver delivers initial minimum power of 10W for 90 minutes.</li> <li>• Available for 4' nominal length non-dim or 0-10V fixture only (consult factory for all other lengths/drivers).</li> <li>• Provided with combination test switch/indicator light for remote mount installation.</li> </ul>

## MOUNTING

	DESCRIPTION
	<ul style="list-style-type: none"> <li>• Use appropriate fastener through <math>\varnothing 3/16"</math> holes in housing.</li> </ul> <p>NOTE: A minimum distance of 10" is suggested from the top of the fixture to the ceiling surface for best blending of light.</p>

## ACCESSORY

	ORDERING CODE	DESCRIPTION	SPECIFICATIONS
	BSS120-DF	END OF RUN DIFFUSION FILM	<ul style="list-style-type: none"> <li>• 8" long piece of diffusion film blends and softens the light distribution on the end wall surfaces.</li> </ul>