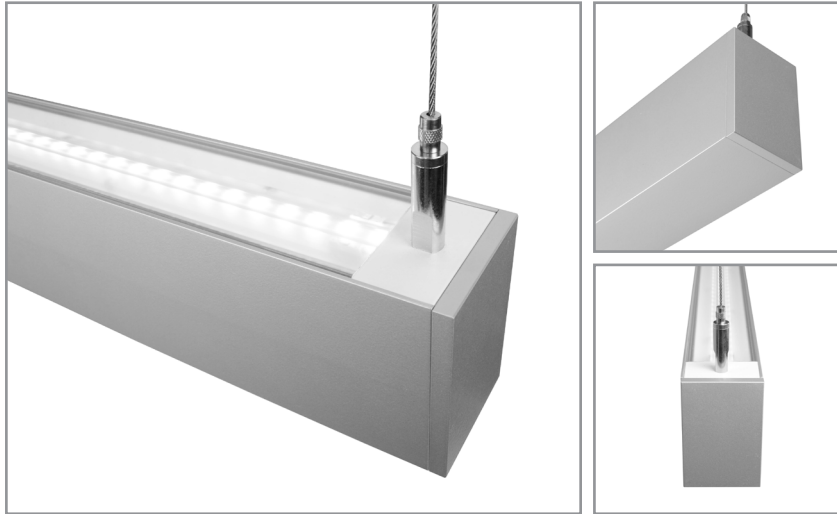


BSS235 | **bodhi**

2" wide indirect LED luminaire

Project: _____ Type: _____



FEATURES

The BSS235 is an indirect linear LED luminaire for general lighting applications. The 2" wide by 3" tall extrusion is capped with machined aluminum end caps and available with Lambertian or batwing light distributions. A variety of dimming drivers, light outputs and finishes add further versatility of this clean design luminaire. The BSS235 is Controls Capable, being offered with a variety of integrated control options

SPECIFICATIONS

Fixture constructed of extruded aluminum, extruded acrylic lens and machined aluminum end caps.

Lambertian and batwing light distributions available.

Standard finishes as shown below.

Available in nominal lengths of 2'–8' single fixtures and continuous runs.

Basic continuous run fixtures provided with 18 ga. wiring harness for 6 Amp maximum load (consult factory for runs requiring sensor integration, etc.).

Standard integral 120-277V driver offered with 0-10V dimming or non-dim (other dimming driver options available).

Integral 120-277V emergency battery backup available for 4' or 8' nominal non-dim or 0-10V (consult factory for all other lengths/drivers).

Standard light outputs range from 465–970 lumens per foot depending on the optic option.

LEDs available in 2700K, 3000K, 3500K and 4000K, within a 3 step MacAdam ellipse, all with 90+ CRI typical.

Life: 50,000 hours L₇₀.

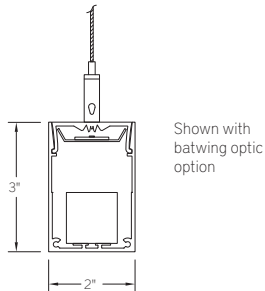
Bartco Lighting Controls Capable fixture available with integrated controls from a variety of suppliers.

Limited five year warranty.

UL and C-UL listed for dry and damp locations.



SECTION



PERFORMANCE

Note: All data reflects fixture with 3500K LEDs.

NOMINAL LENGTH	OPTIC OPTION	OUTPUT	LUMENS/ft.	WATTS/ft.	LUMINAIRE LUMENS	EFFICACY (LPW)
4'	Lambertian	L: low	465	5.0	1738	93
		R: regular	600	7.2	2257	84
		H: high	780	10.1	2966	79
	Batwing	L: low	570	5.7	2112	100
		R: regular	740	7.9	2743	94
		H: high	970	10.9	3604	89

BSS235 -

NOMINAL FIXTURE LENGTH* 2: 24-1/2" 3: 35-1/2" 4: 46-1/2" 5: 57-1/2" 6: 68-1/2" 7: 79-1/2" 8: 90-1/2"	CORRELATED COLOR TEMPERATURE 27: 2700K-90+ CRI 30: 3000K-90+ CRI 35: 3500K-90+ CRI 40: 4000K-90+ CRI	DRIVER ND: non-dimming [Dimming] D: 0-10V, 1% DTR: triac, 1%, (120V ONLY) DLV: electronic low voltage, 1%, (120V ONLY) HES: Lutron EcoSystem, soft-on/fade-to-black, 1% EL: eldoLED ECOdrive 0-10V, 1% ES: eldoLED SOLOdrive 0-10V, 0.1% ELD: eldoLED ECOdrive DALI, 1% ESD: eldoLED SOLOdrive DALI, 0.1%	LIGHT OUTPUT (lumens per foot w/ optic option 2) L: low – 570 R: regular – 740 H: high – 970 CF: consult factory for custom output	OPTIC 1: Lambertian distribution 2: batwing distribution	RUN CONFIGURATION SN: single ST: starter AD: adder TR: terminator	MOUNT C4: cable mount 4' cable length C8: cable mount 8' cable length CF: consult factory for custom mounting	OPTIONS ED: emergency driver (4' nom. non-dim or 0-10V only) WS1A: Wattstopper FS-205, 100%-0% ‡ WS1B: Wattstopper FS-205, 100%-50% ‡ EN1: Enlighted FS-D22 ‡ ES4: Philips EasySense SNS211 MC ‡ CA1: Casambi CBU-A2D ‡ NL1: nLight RES7 ‡ NL2: nLight RIO ‡ LA1: Lutron Athena A-WN-D01-RF-WH ‡ LA2: Lutron Athena A-WN-D01-OCC-WH ‡	FINISH AW: architectural white (semi-matte) WH: white (semi-gloss) BL: black (semi-matte) MB: matte black ESS: environmental satin silver BZ: bronze PR: primer CF: consult factory for custom finish SA: satin anodize (may require additional lead time)
--	---	---	--	---	--	---	--	--

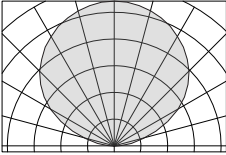
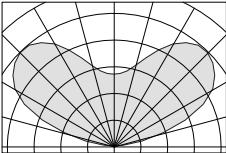
* Actual dimension dependent on run configuration.

‡ See Integrated Controls section for driver compatibility information.

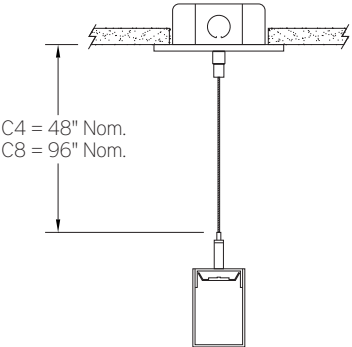
BSS235 | **bodhi**

2" wide indirect LED luminaire

OPTIC

	ORDERING CODE	DESCRIPTION	SPECIFICATIONS
	1	LAMBERTIAN DISTRIBUTION	Lightly frosted extruded acrylic lens for Lambertian distribution
	2	BATWING DISTRIBUTION	Clear extruded acrylic with wide distribution optic features

MOUNTING

	ORDERING CODE	DESCRIPTION
 <p>C4 = 48" Nom. C8 = 96" Nom.</p>	C4 and C8	CABLE MOUNT Mounting option includes: <ul style="list-style-type: none"> • Ø 1/16" x 48" (C4) or 96" (C8) aircraft cables • 60" (C4) or 108" (C8) power cable (in coordinating finish) • Bracket bars • Ø 5" white canopies • Ceiling couplers • Side exit cable grippers

OPTIONS

ORDERING CODE	DESCRIPTION	SPECIFICATIONS
ED	EMERGENCY LED DRIVER	<ul style="list-style-type: none"> • Universal 120-277V input voltage emergency driver delivers initial minimum power of 10W for 90 minutes. • Available for 4' or 8' nominal length non-dim or 0-10V fixture (consult factory for all other lengths/drivers). • Indicator lamp/test switch located on the underside at an end.

OPTIONS - INTEGRATED CONTROLS

Note: For 3' and longer fixtures. All controls located on the housing underside at an end.



	ORDERING CODE	LIGHT OUTPUT SETTING	MODEL	CONTROL PROTOCOL	FUNCTIONS	COMPATIBLE DRIVERS
	WS1A	100% – 0% ¹	FS-205	N/A	PIR occupancy and light level sensor.	For use with on/off or 0-10V dimming drivers only.
	WS1B	100% – 50% ¹				
	EN1	Set during commissioning	FS-D22	Bluetooth Wireless	PIR occupancy, ambient light sensing, daylight harvesting, and environment monitoring for use within an Enlighted control network.	Provided with Advance sensor ready series 0-10V dimming drivers.
	ES4	Set during commissioning	SNS211 MC	Bluetooth Wireless	Occupancy, daylight harvesting and task tuning sensor with advance grouping, for use within a MasterConnect network.	Provided with Advance sensor ready series 0-10V dimming drivers.
	CA1	Set during commissioning	CBU-A2D	Bluetooth Wireless	0-10V/DALI driver controller, for use within a Casambi ecosystem.	For use with 0-10V or DALI drivers. Consult factory for details.
	NL1	Set during commissioning	RES7 ²	Radio Wireless	Dimming, PIR occupancy detection and daylight harvesting, for use within an nLight AIR network.	Provided with Advance sensor ready series or eldoLED 0-10V drivers.
	NL2		RIO ²		Dimming, for use within an nLight AIR network.	
	LA1	Set during commissioning	A-WN-D01-RF-WH	Radio Wireless	Dimming only for use with an Athena control system.	Provided with Advance sensor ready series or eldoLED 0-10V or eldoLED DALI-2 drivers.
	LA2		A-WN-D01-OCC-WH		Dimming, PIR occupancy and daylight sensor for use with an Athena control system.	

1. Consult factory for custom light output setting.

2. Consult your Acuity representative for application-specific model number.

BSS235 | **bodhi**

2" wide indirect LED luminaire

LENGTH/MOUNTING DIMENSIONS

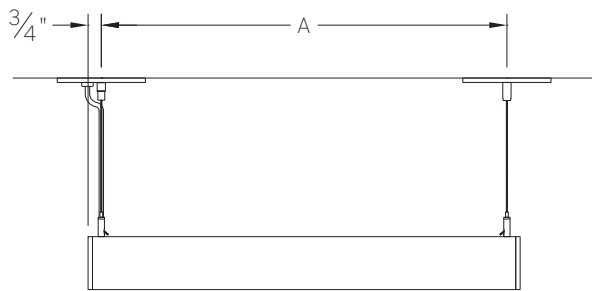
ORDERING CODE	LENGTH A	LENGTH B	LENGTH C
2	23"	23-1/2"	24"
3	34"	34-1/2"	35"
4	45"	45-1/2"	46"
5	56"	56-1/2"	57"
6	67"	67-1/2"	68"
7	78"	78-1/2"	79"
8	89"	89-1/2"	90"

RUN CONFIGURATION INFORMATION

ORDERING CODE	DESCRIPTION
SN	Single
ST	Starter
AD	Adder
TR	Terminator

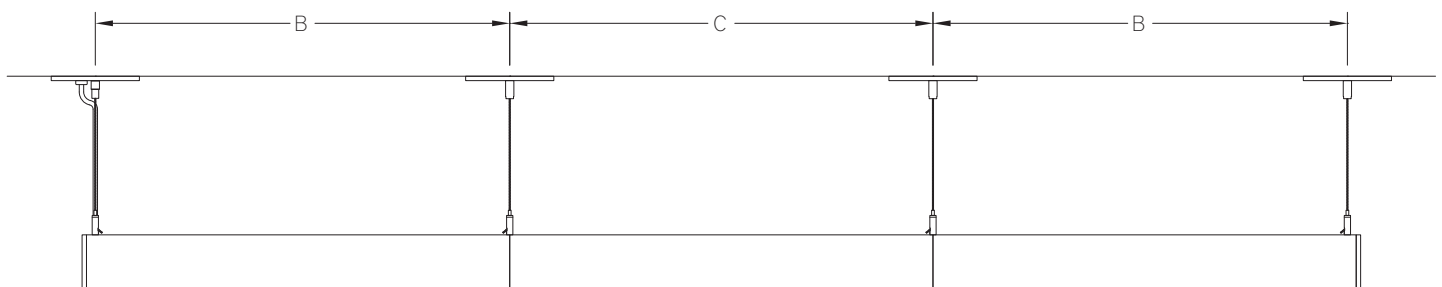
RUN INFORMATION

Side View - Single Fixture



SN

Side View - Continuous Run



ST

AD

TR