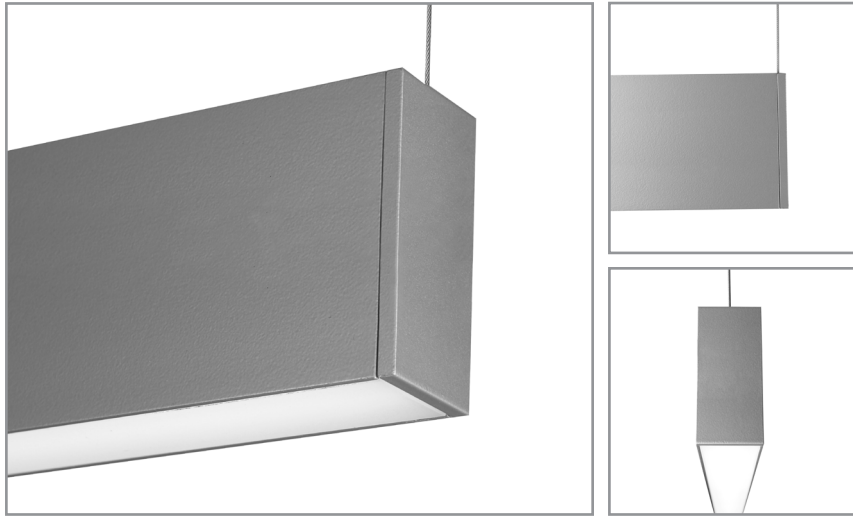


1-3/8" x 3" rectilinear bi-directional LED luminaire

Project: _____ Type: _____



FEATURES

The Grom series GRM30 is a miniature, bi-directional, linear luminaire for general lighting use. While small in profile, at 1-3/8" wide by 3" tall, the extruded aluminum fixture accepts a variety of popular drivers. Standard 90+ CRI LEDs, dual circuiting, multiple direct lens and indirect optic options enhance application versatility.

SPECIFICATIONS

Fixture constructed of an extruded aluminum housing, extruded acrylic lenses and machined aluminum end caps

Fixture provided with minimal, small diameter aircraft cable and hardware

Standard finishes as shown below

Available in nominal lengths of 2'-8" single fixtures and continuous runs

Standard integral 120-277V driver offered with 0-10V dimming or non-dim (other dimming driver options available)

Remote mounted emergency battery backup available (ordered separately, consult factory for details)

Performance data pending lab tests

LEDs available in 2700K, 3000K, 3500K and 4000K, within a 3 step MacAdam ellipse, all with 90+ CRI typical

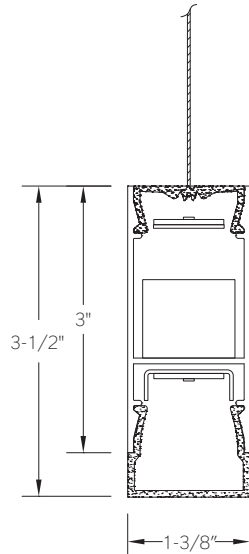
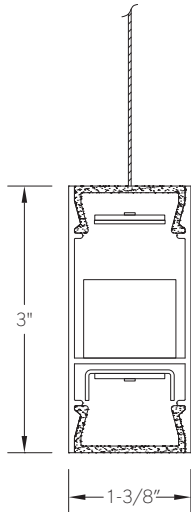
Life: 50,000 hours L₇₀

Limited five year warranty

UL and UL-C listed for dry and damp locations

SECTION

Shown with Lambertian optic and flush lens options



Shown with Batwing optic and drop lens options



GRM30 -

NOMINAL FIXTURE LENGTH* 23: 22-5/8" 28: 28-1/8" 34: 33-5/8" 39: 39-1/8" 45: 44-5/8" 50: 50-1/8" 56: 55-5/8" 61: 61-1/8" 67: 66-5/8" 72: 72-1/8" 78: 77-5/8" 83: 83-1/8" 89: 88-5/8" RUN ‡	CORRELATED COLOR TEMPERATURE 27: 2700K - 90+ CRI 30: 3000K - 90+ CRI 35: 3500K - 90+ CRI 40: 4000K - 90+ CRI	DRIVER ND: non-dimming [Dimming] D: 0-10V, 1% HES: Lutron EcoSystem, soft-on/fade-to-black, 1% H2: Lutron Hi-lume 2-wire forward phase, 1%, (120V ONLY) E5: Lutron EcoSystem 5-Series, 5% EL: eldoLED ECOdrive 0-10V, 1%	INDIRECT LIGHT OUTPUT (lumens per foot) R: regular H: high	INDIRECT OPTIC 1: Lambertian 2: Batwing	MOUNT C4: cable mount 4' cable length C8: cable mount 8' cable length	FINISH AW: architectural white (semi-matte) WH: white (semi-gloss) BL: black (semi-matte) MB: matte black ESS: environmental satin silver BZ: bronze PR: primer CF: consult factory for custom finish SA: satin anodize (may require additional lead time)
		DIRECT LIGHT OUTPUT (lumens per foot) R: regular H: high	DIRECT LENS A: flush lens B: drop lens - solid end C: drop lens - illuminated end	CIRCUIT 1: single circuit 2: two circuit (50" + length fixtures)		

* Actual dimension dependent on run configuration

‡ Specify run length to the nearest 1". Factory will configure using the least quantity of fixtures as close to the desired run length as possible. Run to be confirmed with a shop drawing.

DIRECT LENS OPTIONS

ORDERING CODE	DESCRIPTION	SPECIFICATIONS
A	FLUSH LENS	Flush frosted acrylic extrusion
B	DROP LENS - SOLID END	1/2" H frosted acrylic extrusion with full height aluminum end cap
C	DROP LENS - ILLUMINATED END	1/2" H frosted acrylic extrusion with matching acrylic end cap

INDIRECT OPTIC

ORDERING CODE	DESCRIPTION
1	Lambertian indirect light distribution
2	Batwing indirect light distribution

MOUNTING

ORDERING CODE	DESCRIPTION
---------------	-------------

C4 and C8

CABLE MOUNT

Mounting option includes:

- Ø 1/32" x 48" (C4) or 96" (C8) aircraft cables
- 60" (C4) or 108" (C8) low voltage cable (in coordinating finish)
- Bracket bars
- Ø 5" white canopies
- Canopy mount cable grippers

