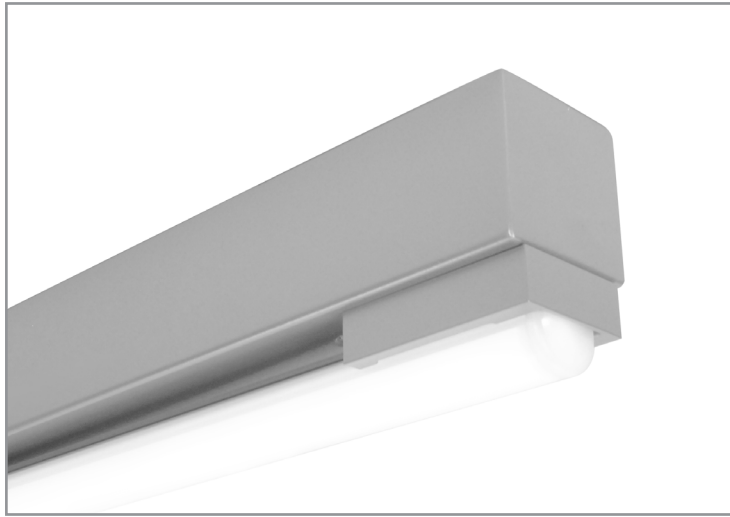


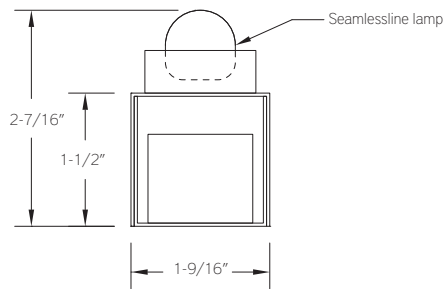
# BL6400 | GENERAL INFORMATION

Surface mount luminaire for use with Seamlessline LED lamp

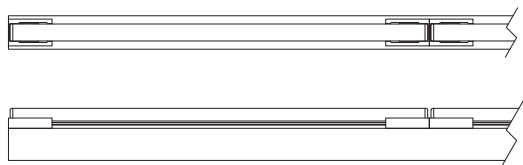
Project: \_\_\_\_\_ Type: \_\_\_\_\_



## SECTION



## PLAN / SIDE



## FEATURES

The BL6400 is a clean, sheet formed, surface mount luminaire designed to enhance the qualities of the Seamlessline LED lamp. The fixture is offered in a broad range of standard powder coat and stainless steel finishes and manufactured in 3'-8' nominal lengths for all available sizes of the proprietary tubular LED source. The integral driver is available with non-dim or 0-10V dimming control.

## SPECIFICATIONS

Fixture constructed of formed and welded, 20 ga. steel, chemically treated to resist corrosion and enhance paint adhesion and machined aluminum lamp socket covers

Standard finishes as shown below

Available for 34", 40", 50" and 60" nominal length Nippo Seamlessline LED lamp in single fixture, continuous run and some tandem configurations

Basic continuous run fixtures provided with 18 ga. wiring harness for 6 Amp maximum

Standard integral 120-277V driver offered with 0-10V dimming or non-dim

Integral 120-277V emergency battery backup available for non-dimming 50" and longer length fixtures

Seamlessline LED lamps ordered separately – see supplementary lamp info. sheet for details

UL and C-UL listed for dry and damp locations

Limited five year warranty



## PERFORMANCE

NOMINAL LENGTH	LUMENS/ft.	WATTS/ft.	LUMINAIRE LUMENS	EFFICACY
50"	412	5.4	1692	76

Note: All data reflects fixture with 3500K Seamlessline LED lamp

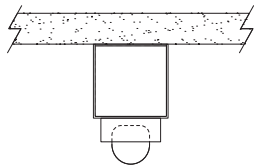
## BL6400 -

FIXTURE LENGTH	DRIVER	MOUNT	RUN CONFIGURATION	OPTIONS	FINISH
34: 34-15/32" 40: 39-13/32" 50: 49-9/32" 60: 59-3/32" 4040: 78-13/16" 5050: 98-19-32"	ND: non-dimming D: dimming 0-10V, 6%	SM: surface mount CF: consult factory for custom mounting	SN: single ST: starter AD: adder TR: terminator	ED: emergency driver (non-dimming 50" and longer fixtures)	AW: architectural white (semi-matte) WH: white (semi-gloss) BL: black (semi-matte) MB: matte black ESS: environmental satin silver BZ: bronze PR: primer S4: #4 brushed stainless steel S8: #8 polished stainless steel CF: consult factory for custom finish

## MOUNTING

ORDERING CODE

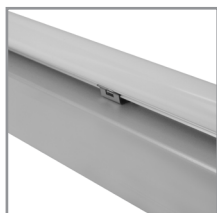
DESCRIPTION



SM

SURFACE MOUNT

Use appropriate fastener through Ø3/16" holes in housing



50" and 60" lamps provided with center located stainless steel lamp clip

## OPTIONS

ORDERING CODE

DESCRIPTION

SPECIFICATIONS



ED

EMERGENCY LED DRIVER

- Universal 120-277V input voltage emergency driver delivers initial minimum power of 10W for 90 minutes
- Available for **Non-Dimming** 50" and longer fixtures.
- **Note: remote battery backup available for shorter fixture lengths - ordered separately, consult factory for details**
- Indicator/test switch located on side of the fixture, near an end