

LENGTH / MOUNTING DIMENSIONS

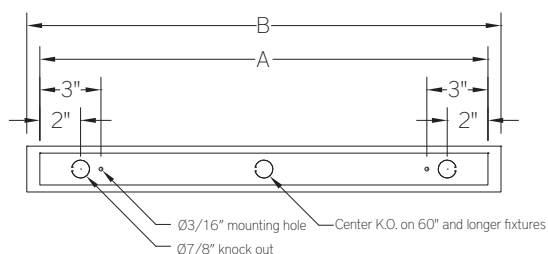
ORDERING CODE	LENGTH A	LENGTH B	LENGTH C
34	33-15/32"	34-3/4"	34-1/8"
40	39-13/32"	40-11/16"	40-1/16"
50	49-9/32"	50-9/16"	49-15/16"
60	59-3/32"	60-3/8"	59-3/4"
4040	78-13/16"	80-3/32"	79-15/32"
5050	98-19/32"	99-7/8"	99-7/32"

RUN CONFIGURATION INFORMATION

ORDERING CODE	DESCRIPTION
SN	Single
ST	Starter
AD	Adder
TR	Terminator

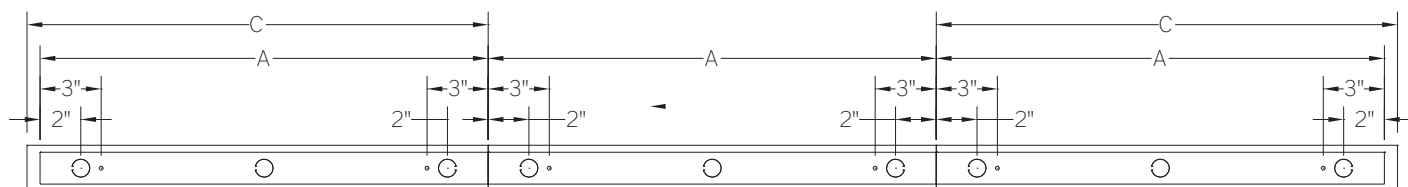
RUN INFORMATION

Back Plan - Single Fixture Option



SN

Back Plan - Continuous Run Option

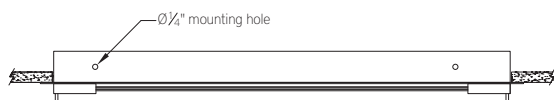


ST

AD

TR

Side View - Single Fixture Option



SN

Side View - Continuous Run Option



ST

AD

TR