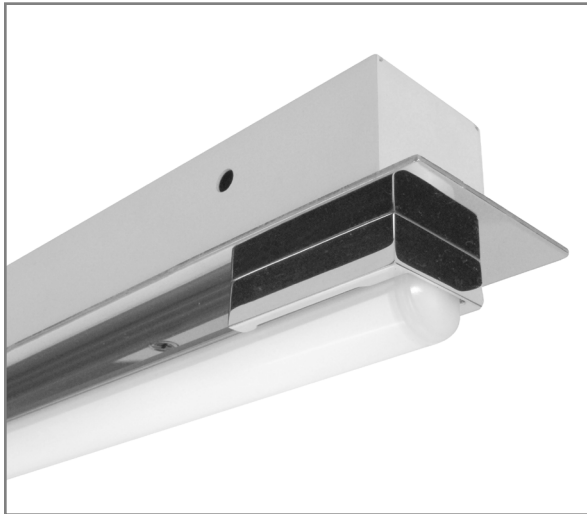


# BL6200 | BL6

Semi-recessed luminaire for use with Seamlessline LED lamp

Project: \_\_\_\_\_ Type: \_\_\_\_\_



## FEATURES

The BL6200 is a clean, sheet formed, semi-recessed luminaire, designed to enhance the qualities of the Seamlessline LED lamp. With the fixture housing recessed into a wall or ceiling cavity, only the lamp and a flat trim plate are visible. The fixture is offered in a broad range of standard powder coat and stainless steel finishes and manufactured in 3'-8' nominal lengths for all available sizes of the proprietary tubular LED source. The integral driver is available with non-dim or 0-10V dimming control.

## SPECIFICATIONS

Fixture housing is formed and welded, 20 ga. steel, chemically treated to resist corrosion and enhance paint adhesion

A 16 ga. trim plate is fitted with machined aluminum lamp socket covers

Standard finishes as shown below

Available for 34", 40", 50" and 60" nominal length Nippo Seamlessline LED lamp in single fixture, continuous run and some tandem configurations

Basic continuous run fixtures provided with 18 ga. wiring harness for 6 Amp maximum load

Standard, integral 120-277V driver offered with 0-10V dimming or non-dim

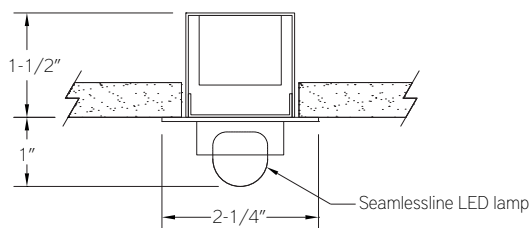
Integral 120-277V emergency battery backup available for non-dimming 50" and longer length fixtures

Seamlessline LED lamps ordered separately – see supplementary lamp info. sheet for details

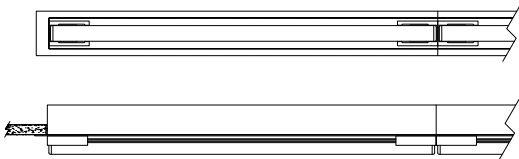
UL and C-UL listed for insulated ceiling, dry and damp locations

Limited five year warranty

## SECTION



## PLAN / SIDE



## PERFORMANCE

NOMINAL LENGTH	LUMENS/ft.	WATTS/ft.	LUMINAIRE LUMENS	EFFICACY
50"	410	5.5	1730	75

Note: All data reflects fixture with 3500K Seamlessline LED lamp

## BL6200 –

### NOMINAL FIXTURE LENGTH\*

34: 34-3/4"  
40: 40-11/16"  
50: 50-9-16"  
60: 60-3/8"  
4040: 80-3/32"  
5050: 99-7/8"

### DRIVER

ND: non-dimming  
D: dimming 0-10V, 6%

### MOUNT

RE: semi-recessed mount  
CF: consult factory for custom mounting

### RUN CONFIGURATION

SN: single  
ST: starter  
AD: adder  
TR: terminator

### OPTIONS

ED: emergency driver (non-dimming 50" and longer fixtures)

### FINISH

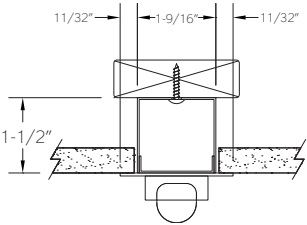
AW: architectural white (semi-matte)  
WH: white (semi-gloss)  
BL: black (semi-matte)  
MB: matte black  
ESS: environmental satin silver  
BZ: bronze  
PR: primer  
S4: #4 brushed stainless steel  
S8: #8 polished stainless steel  
CF: consult factory for custom finish

\* Actual dimension dependent on run configuration


# BL6200 | BL6

Semi-recessed luminaire for use with Seamlessline LED lamp

MOUNTING

	ORDERING CODE	DESCRIPTION
	RE	SEMI-RECESSED  Use appropriate fastener through Ø3/16" holes in housing into blocking

OPTIONS

	ORDERING CODE	DESCRIPTION	SPECIFICATIONS
	ED	EMERGENCY LED DRIVER	<ul style="list-style-type: none"><li>• Universal 120-277V input voltage emergency driver delivers initial minimum power of 10W for 90 minutes</li><li>• Available for <b>Non-Dimming</b> 50" and longer fixtures.</li></ul> <p><b>Note: remote battery backup available for shorter fixture lengths - ordered separately, consult factory for details</b></p> <ul style="list-style-type: none"><li>• Provided with combination test switch/indicator light for remote mount installation</li></ul>

# BL6200 | BL6

Semi-recessed luminaire for use with Seamlessline LED lamp

## LENGTH / MOUNTING DIMENSIONS

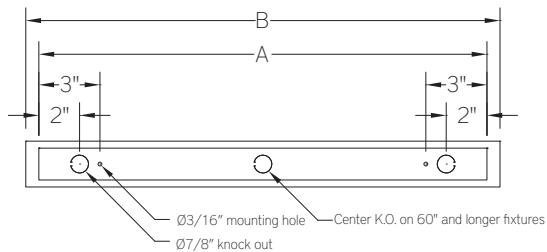
ORDERING CODE	LENGTH A	LENGTH B	LENGTH C
34	33-15/32"	34-3/4"	34-1/8"
40	39-13/32"	40-11/16"	40-1/16"
50	49-9/32"	50-9/16"	49-15/16"
60	59-3/32"	60-3/8"	59-3/4"
4040	78-13/16"	80-3/32"	79-15/32"
5050	98-19/32"	99-7/8"	99-7/32"

## RUN CONFIGURATION INFORMATION

ORDERING CODE	DESCRIPTION
SN	Single
ST	Starter
AD	Adder
TR	Terminator

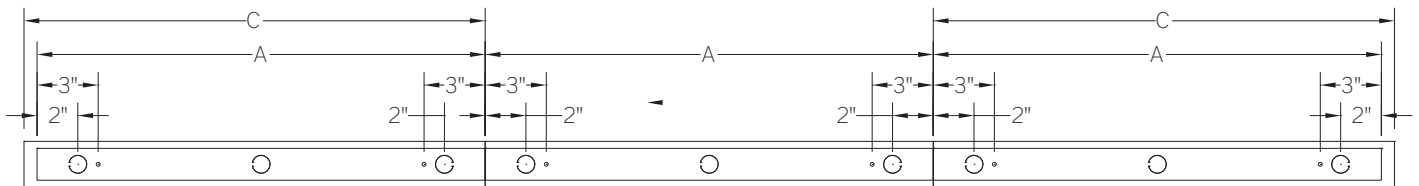
## RUN INFORMATION

### Back Plan - Single Fixture Option



SN

### Back Plan - Continuous Run Option

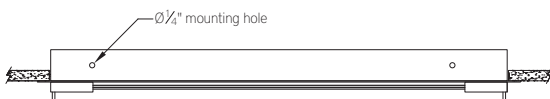


ST

AD

TR

### Side View - Single Fixture Option



SN

### Side View - Continuous Run Option



ST

AD

TR