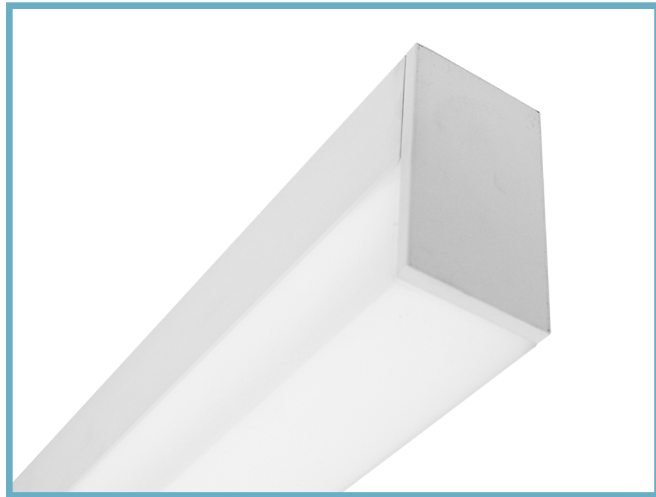


HCB07 | Swell

2-1/8" wide LED luminaire with drop lens, Illuminated by BIOS®

Project: _____ Type: _____



FEATURES

The Swell Series HCB07 is a linear LED luminaire tailored for health-centric lighting installations. The 2-1/8" wide extruded aluminum housing is fitted with a 2" tall, rectangular or rounded profile frosted acrylic lens and capped with machined aluminum end caps.

The HCB07 fixture is embedded with BIOS SkyBlue® circadian solutions to produce the healthy "blue sky" light signal needed to stimulate human circadian biology. This specific light wavelength communicates directly with human biology through a non-visual photoreceptor to regulate circadian rhythms, providing healthier sleep patterns and ultimately, better health.

SPECIFICATIONS

Fixture constructed of an extruded aluminum housing, extruded, frosted acrylic lens and machined aluminum end caps

Model variations offered in rectangular or rounded profiles for surface and wall mount or cable suspended applications with solid or luminous end options

Standard finishes as shown below

Available in nominal lengths of 2'-8' single fixtures and continuous runs

Basic continuous run fixtures provided with 18 ga. wiring harness for 6 Amp maximum load (consult factory for runs requiring multiple circuits, sensor integration, etc.)

Standard integral 120-277V driver offered with 0-10V dimming or non-dim

Integral 120-277V emergency battery backup available for 4' or 8' nominal non-dim or 0-10V (consult factory for all other lengths/drivers)

Standard light outputs are 830 and 1105 lumens per foot

BIOS LEDs have 80+ CRI, R9 90+ and are available in static 3000K, 3500K, 4000K and two dynamic options in 2700-3000K, 2700-3500K and 2700-4000K

Life: 50,000 hours L₇₀

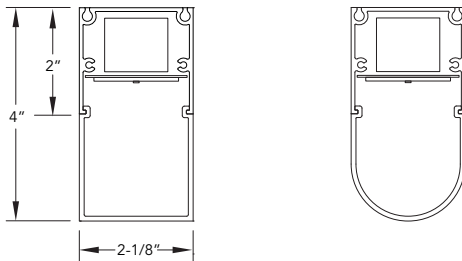
Passive infrared occupancy sensor available (FOR RECTANGULAR PROFILE ONLY)

Limited five year warranty

UL and C-UL listed for dry and damp locations



SECTION



PERFORMANCE

NOMINAL LENGTH	OUTPUT	LUMENS/ft.	WATTS/ft.	LUMINAIRE LUMENS	EFFICACY (LPW)
4'	R: regular	830	9.6	3088	87
	H: high	1105	13.2	4117	84

Note: All data reflects fixture with BIOS Static Spectrum 3500K LEDs and rectangular profile and solid ends

HCB07 -

NOMINAL FIXTURE LENGTH*	CORRELATED COLOR TEMPERATURE	DRIVER	LENS	OPTIONS	MOUNT	FINISH
2: 22-3/4"	[BIOS static] BS30: 3000K	ND: non-dimming [Dimming] D: 0-10V, 1%	A: rectangular profile – solid end B: rectangular profile – luminous end C: rounded profile – solid end D: rounded profile – luminous end	ED: emergency driver (4' or 8' non-dim or 0-10V only) S1A: occ sensor pos.1, 100%–0% ‡ S1B: occ sensor pos.1, 100%–50% ‡ S2A: occ sensor pos.2, 100%–0% ‡ S2B: occ sensor pos.2, 100%–50% ‡ S3A: occ sensor pos.3, 100%–0% ‡ S3B: occ sensor pos.3, 100%–50% ‡	SM: surface mount WD: wall mount – direct WI: wall mount – indirect C4: cable mount 4' cable length C8: cable mount 8' cable length	AW: architectural white (semi-matte) WH: white (semi-gloss) BL: black (semi-matte) MB: matte black ESS: environmental satin silver BZ: bronze PR: primer CF: consult factory for custom finish
3: 33-3/4"	BS35: 3500K					SA: satin anodize (may require additional lead time)
4: 44-3/4"	BS40: 4000K					
5: 55-3/4"	[BIOS dynamic] BD30: 2700K-3000K	LIGHT OUTPUT (lumens per foot) R: regular – 830 H: high – 1105 CF: consult factory for custom output				
6: 66-3/4"	BD35: 2700K-3500K	* Actual dimension dependent on run configuration and sensor option ‡ See options section for details				
7: 77-3/4"	BD40: 2700K-4000K					
8: 88-3/4"	[BIOS dynamic TW] BDTW30: 2700K-3000K BDTW35: 2700K-3500K BDTW40: 2700K-4000K				RUN CONFIGURATION SN: single ST: starter AD: adder TR: terminator	

HCB07 | Swell

2-1/8" wide LED luminaire with drop lens, Illuminated by BIOS®

CORRELATED COLOR TEMPERATURE

Consult factory for specifics when using dimming protocols other than 0-10V.
For additional information about BIOS LED modules, visit www.bartcolighting.com/series/swell/

ORDERING CODE	MODULE TYPE	LIGHT EFFECT	CONTROL METHOD	
BS30 BS35 BS40	BIOS Static	<ul style="list-style-type: none"> Static color temperature 490nm SkyBlue® LED is always on 	<ul style="list-style-type: none"> Non-dimming or 0-10V No BIO-Dimming module required 	
BD30 BD35 BD40	BIOS Dynamic	<ul style="list-style-type: none"> 490nm SkyBlue® LED can be BIO dimmed out with most driver/dimmer combinations 490nm SkyBlue® wavelengths removed through first 20% of dimming range, followed by a CCT transition to 2700K 	<ul style="list-style-type: none"> 0-10V Includes integral Bio-Dimming module 	
BDTW30 BDTW35 BDTW40	BIOS Dynamic Tunable White	<ul style="list-style-type: none"> CCT and Light output can be controlled separately with appropriate driver 3000K, 3500K and 4100K modules all transition to 2700K when dimmed. 	<ul style="list-style-type: none"> 0-10V two-channel driver No BIO-Dimming module required 	

LENS

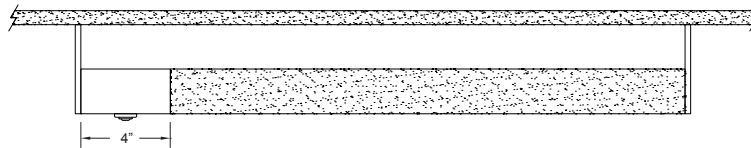
	ORDERING CODE	DESCRIPTION	SPECIFICATIONS
	A	RECTANGULAR SOLID END	Rectangular profile with full height aluminum end cap
	B	RECTANGULAR LUMINOUS END	Rectangular profile with aluminum end cap and frosted acrylic lens end
	C	ROUNDED SOLID END	Rounded profile with full height aluminum end cap
	D	ROUNDED LUMINOUS END	Rounded profile with aluminum end cap and frosted acrylic lens end

HCB07 | Swell

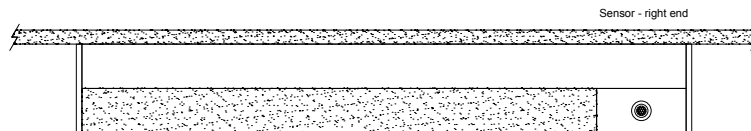
2-1/8" wide LED luminaire with drop lens, Illuminated by BIOS®

OPTIONS

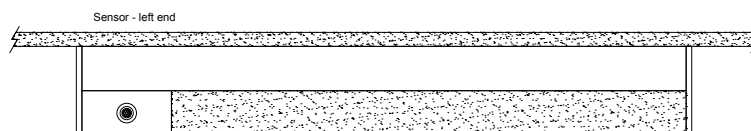
ORDERING CODE	DESCRIPTION	SPECIFICATIONS
ED	EMERGENCY LED DRIVER	<ul style="list-style-type: none"> • Universal 120-277V input voltage emergency driver delivers initial minimum power of 10W for 90 minutes • Available for 4' nominal length non-dim or 0-10V fixture only (consult factory for all other lengths/drivers)
	OCCUPANCY SENSOR	<ul style="list-style-type: none"> • Passive infrared occupancy sensor with hold-off daylighting adjustment (10-120 foot candles) and time delay adjustment from 30 seconds to 30 minutes • Sensor adds 4" to overall fixture length • Consult factory for custom output
S1A	Occupancy sensor – position 1, 100% – 0%	Sensor located on the top at an end, with 100% – 0% light output setting
S1B	Occupancy sensor – position 1, 100% – 50%	Sensor located on the top at an end, with 100% – 50% light output setting



S2A	Occupancy sensor – position 2, 100% – 0%	Sensor located on the side at the right end, with 100% – 0% light output setting
S2B	Occupancy sensor – position 2, 100% – 50%	Sensor located on the side at the right end, with 100% – 50% light output setting



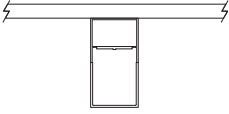
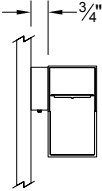
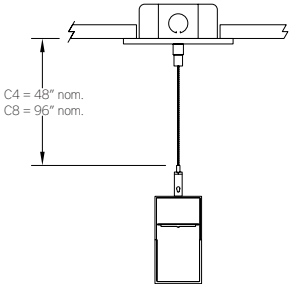
S3A	Occupancy sensor – position 3, 100% – 0%	Sensor located on the side at the left end, with 100% – 0% light output setting
S3B	Occupancy sensor – position 3, 100% – 50%	Sensor located on the side at the left end, with 100% – 50% light output setting



HCB07 | Swell

2-1/8" wide LED luminaire with drop lens, Illuminated by BIOS®

MOUNTING

	ORDERING CODE	DESCRIPTION
	SM	<p>SURFACE MOUNT</p> <p>Use appropriate fastener through Ø3/16" holes in housing</p>
	WD	<p>WALL MOUNT – DIRECT ORIENTATION</p> <p>Mounting option includes:</p> <ul style="list-style-type: none"> • 1-7/8" H x 2-1/2" W aluminum bracket projects the fixture housing 3/4" from the wall surface
	C4 and C8	<p>CABLE MOUNT</p> <p>Mounting option includes:</p> <ul style="list-style-type: none"> • Ø 1/16"x 48" (C4) or 96" (C8) aircraft cables • 60" (C4) or 108" (C8) power cable (in coordinating finish) • Bracket bars • Ø 5" white canopies • Ceiling couplers • Side exit cable grippers

HCB07 | Swell

2-1/8" wide LED luminaire with drop lens, Illuminated by BIOS®

LENGTH/MOUNTING DIMENSIONS

RUN CONFIGURATION INFORMATION

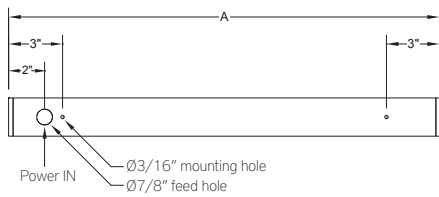
ORDERING CODE	LENGTH A*	LENGTH B*	LENGTH C*	LENGTH D*	LENGTH E*
2	22-3/4"	22-1/2"	22-1/4"	16-3/4"	19-1/2"
3	33-3/4"	33-1/2"	33-1/4"	27-3/4"	30-1/2"
4	44-3/4"	44-1/2"	44-1/4"	38-3/4"	41-1/2"
5	55-3/4"	55-1/2"	55-1/4"	49-3/4"	52-1/2"
6	66-3/4"	66-1/2"	66-1/4"	60-3/4"	63-1/2"
7	77-3/4"	77-1/2"	77-1/4"	71-3/4"	74-1/2"
8	88-3/4"	88-1/2"	88-1/4"	82-3/4"	85-1/2"

ORDERING CODE	DESCRIPTION
SN	Single
ST	Starter
AD	Adder
TR	Terminator

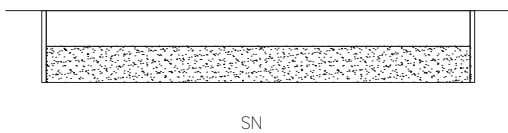
Note: Add 4" to dimension for any fixture using the S1, S2 or S3 occupancy sensor option

RUN INFORMATION

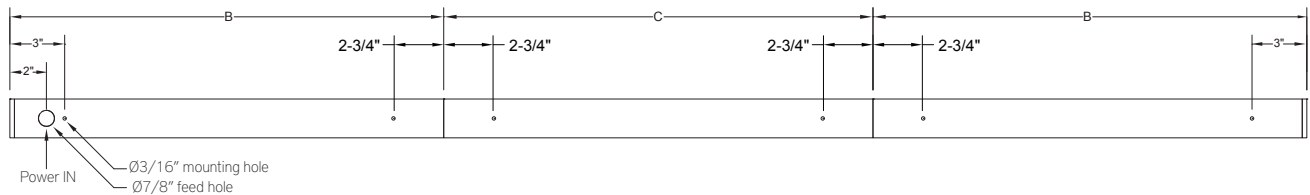
Back Plan - Surface Mount Single Fixture Option



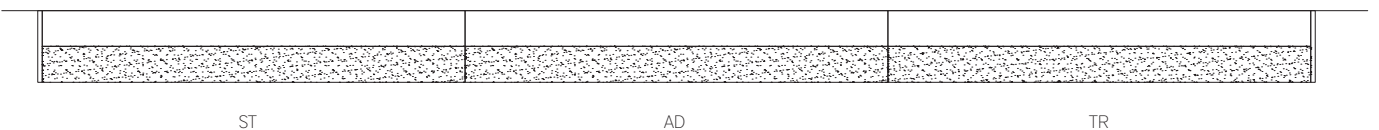
Side View - Surface Mount Single Fixture Option



Back Plan - Surface Mount Continuous Run Option



Side View - Surface Mount Continuous Run Option

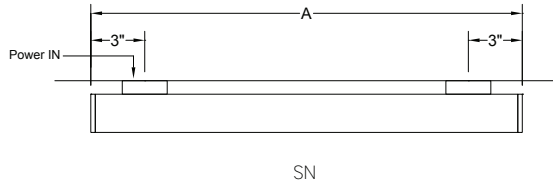


HCB07 | Swell

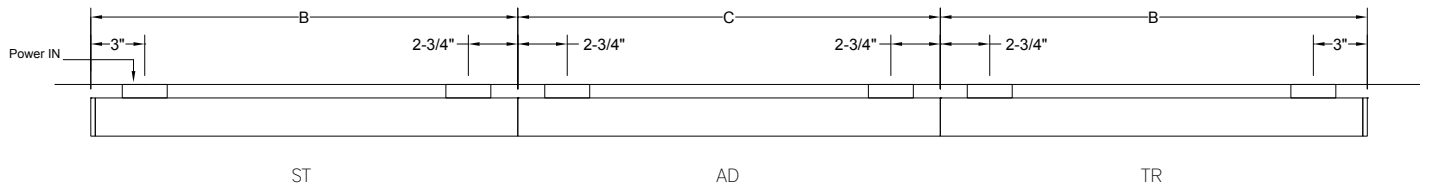
2-1/8" wide LED luminaire with drop lens, Illuminated by BIOS®

RUN INFORMATION

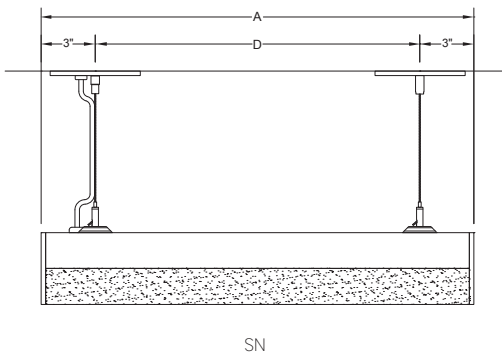
Plan - Wall Mount Single Fixture Option



Plan - Wall Mount Continuous Run Option



Side View - Cable Mount Single Fixture Option



Side View - Cable Mount Continuous Run Option

