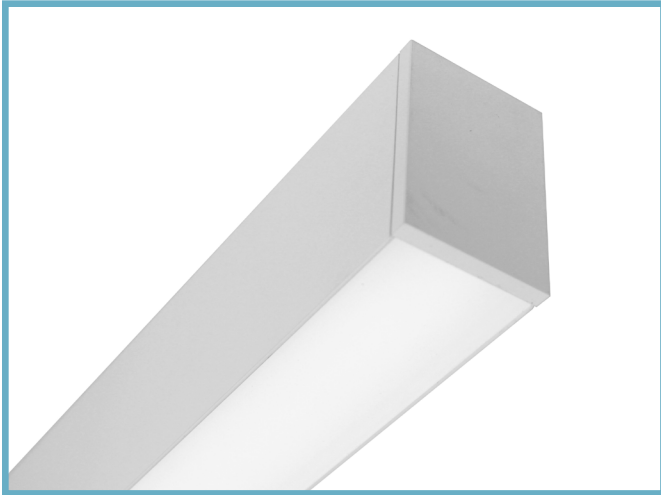


HCB01 | Swell

2" wide LED luminaire with flush lens, Illuminated by BIOS®

Project: _____ Type: _____



FEATURES

The Swell Series HCB01 is a linear LED luminaire tailored for health-centric lighting installations. The 2" wide by 3" tall extrusion is fitted with a flush, frosted lens and machined aluminum end caps.

The HCB01 fixture is embedded with BIOS SkyBlue® circadian solutions to produce the healthy "blue sky" light signal needed to stimulate human circadian biology. This specific light wavelength communicates directly with human biology through a non-visual photoreceptor to regulate circadian rhythms, providing healthier sleep patterns and ultimately, better health.

SPECIFICATIONS

Fixture constructed of an extruded aluminum housing, extruded, frosted acrylic lens and machined aluminum end caps

Model variations offered for surface, wall mount and cable suspended applications

Standard finishes as shown below

Available in nominal lengths of 2'-8' single fixtures and continuous runs

Basic continuous run fixtures provided with 18 ga. wiring harness for 6 Amp maximum load (consult factory for runs requiring multiple circuits, sensor integration, etc.)

Standard integral 120-277V driver offered with 0-10V dimming or non-dim

Integral 120-277V emergency battery backup available for 4' or 8' nominal non-dim or 0-10V (consult factory for all other lengths/drivers)

Standard light outputs are 640 and 850 lumens per foot

BIOS LEDs have 80+ CRI, R9 90+ and are available in static 3000K, 3500K, 4000K and two dynamic options in 2700-3000K, 2700-3500K and 2700-4000K

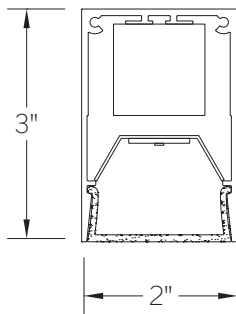
Life: 50,000 hours L₇₀

Limited five year warranty

UL and C-UL listed for dry and damp locations



SECTION



PERFORMANCE

NOMINAL LENGTH	OUTPUT	LUMENS/ft.	WATTS/ft.	LUMINAIRE LUMENS	EFFICACY (LPW)
4'	R: regular	640	9.7	2377	66
	H: high	850	13.4	3169	64

Note: All data reflects fixture with BIOS Static Spectrum 3500K LEDs

HCB01 -

NOMINAL FIXTURE LENGTH*

- 2: 22-5/8"
- 3: 33-5/8"
- 4: 44-5/8"
- 5: 55-5/8"
- 6: 66-5/8"
- 7: 77-5/8"
- 8: 88-5/8"

* Actual dimension dependent on run configuration

CORRELATED COLOR TEMPERATURE

[BIOS static]

- BS30: 3000K
- BS35: 3500K
- BS40: 4000K

[BIOS dynamic]

- BD30: 2700K-3000K
- BD35: 2700K-3500K
- BD40: 2700K-4000K

[BIOS dynamic TW]

- BDTW30: 2700K-3000K
- BDTW35: 2700K-3500K
- BDTW40: 2700K-4000K

DRIVER

ND: non-dimming

[Dimming]

D: 0-10V, 1%

LIGHT OUTPUT (lumens per foot)

R: regular - 640

H: high - 850

CF: consult factory for custom output

MOUNT

SM: surface mount

WD: wall mount - direct

WI: wall mount - indirect

C4: cable mount 4' cable length

C8: cable mount 8' cable length

RUN CONFIGURATION

SN: single

ST: starter

AD: adder

TR: terminator

OPTIONS

ED: emergency driver (4' or 8' non-dim or 0-10V only)

S1A: occ sensor pos.1, 100%-0% (see options section)

S1B: occ sensor pos.1, 100%-50% (see options section)

L: louver (4' and 8' ONLY)

FINISH

AW: architectural white (semi-matte)

WH: white (semi-gloss)

BL: black (semi-matte)

MB: matte black

ESS: environmental satin silver

BZ: bronze

PR: primer

CF: consult factory for custom finish

SA: satin anodize (may require additional lead time)

HCB01 | Swell

2" wide LED luminaire with flush lens, Illuminated by BIOS®

CORRELATED COLOR TEMPERATURE

Consult factory for specifics when using dimming protocols other than 0-10V.
For additional information about BIOS LED modules, visit www.bartcolighting.com/series/swell/

ORDERING CODE	MODULE TYPE	LIGHT EFFECT	CONTROL METHOD	
BS30 BS35 BS40	BIOS Static	<ul style="list-style-type: none"> Static color temperature 490nm SkyBlue® LED is always on 	<ul style="list-style-type: none"> Non-dimming or 0-10V No BIO-Dimming module required 	
BD30 BD35 BD40	BIOS Dynamic	<ul style="list-style-type: none"> 490nm SkyBlue® LED can be BIO dimmed out with most driver/dimmer combinations 490nm SkyBlue® wavelengths removed through first 20% of dimming range, followed by a CCT transition to 2700K 	<ul style="list-style-type: none"> 0-10V Includes integral Bio-Dimming module 	
BDTW30 BDTW35 BDTW40	BIOS Dynamic Tunable White	<ul style="list-style-type: none"> CCT and Light output can be controlled separately with appropriate driver 3000K, 3500K and 4100K modules all transition to 2700K when dimmed. 	<ul style="list-style-type: none"> 0-10V two-channel driver No BIO-Dimming module required 	

MOUNTING

	ORDERING CODE	DESCRIPTION
	SM	<p>SURFACE MOUNT</p> <p>Use appropriate fastener through Ø3/16" holes in housing</p>
	WD	<p>WALL MOUNT – DIRECT ORIENTATION</p> <p>Mounting option includes:</p> <ul style="list-style-type: none"> 1-7/8" H x 2-1/2" W aluminum bracket projects the fixture housing 3/4" from the wall surface

HCB01 | Swell

2" wide LED luminaire with flush lens, Illuminated by BIOS®

MOUNTING

	ORDERING CODE	DESCRIPTION
	WI	<p>WALL MOUNT – INDIRECT ORIENTATION</p> <p>Mounting option includes:</p> <ul style="list-style-type: none"> 1-7/8" H x 2-1/2" W aluminum bracket projects the fixture housing 3/4" from the wall surface
<p>C4 = 48" Nom. C8 = 96" Nom.</p>	C4 and C8	<p>CABLE MOUNT</p> <p>Mounting option includes:</p> <ul style="list-style-type: none"> Ø 1/16"x 48" (C4) or 96" (C8) aircraft cables 60" (C4) or 108" (C8) power cable (in coordinating finish) Bracket bars Ø 5" white canopies Ceiling couplers Side exit cable grippers

OPTIONS

	ORDERING CODE	DESCRIPTION	SPECIFICATIONS
	ED	EMERGENCY LED DRIVER	<ul style="list-style-type: none"> Universal 120-277V input voltage emergency driver delivers initial minimum power of 10W for 90 minutes Available for 4' or 8' nominal length non-dim or 0-10V fixture only (consult factory for all other lengths/drivers) Indicator/test switch located on the top for C4/C8 mount and on the side at an end for SM mount
		OCCUPANCY SENSOR	<ul style="list-style-type: none"> Passive infrared occupancy sensor with hold-off daylighting adjustment (10-120 foot candles) and time delay adjustment from 30 seconds to 30 minutes Light aperture length reduced by 4" Consult factory for custom output
	S1A	Occupancy sensor – position 1, 100% – 0%	Sensor located on the top at an end, with 100% – 0% light output setting
	S1B	Occupancy sensor – position 1, 100% – 50%	Sensor located on the top at an end, with 100% – 50% light output setting
	L	LOUVER	Parabolic louver with 5/8" blades at 1" spacing, formed from diffuse, high reflectance aluminum and supplied with light diffusion film

HCB01 | Swell

2" wide LED luminaire with flush lens, Illuminated by BIOS®

LENGTH/MOUNTING DIMENSIONS

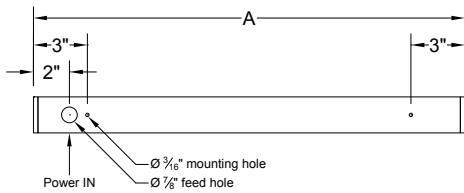
ORDERING CODE	LENGTH A	LENGTH B	LENGTH C	LENGTH D	LENGTH E
2	22-5/8"	22-3/8"	22-1/8"	16-5/8"	19-3/8"
3	33-5/8"	33-3/8"	33-1/8"	27-5/8"	30-3/8"
4	44-5/8"	44-3/8"	44-1/8"	38-5/8"	41-3/8"
5	55-5/8"	55-3/8"	55-1/8"	49-5/8"	52-3/8"
6	66-5/8"	66-3/8"	66-1/8"	60-5/8"	63-3/8"
7	77-5/8"	77-3/8"	77-1/8"	71-5/8"	74-3/8"
8	88-5/8"	88-3/8"	88-1/8"	82-5/8"	85-3/8"

RUN CONFIGURATION INFORMATION

ORDERING CODE	DESCRIPTION
SN	Single
ST	Starter
AD	Adder
TR	Terminator

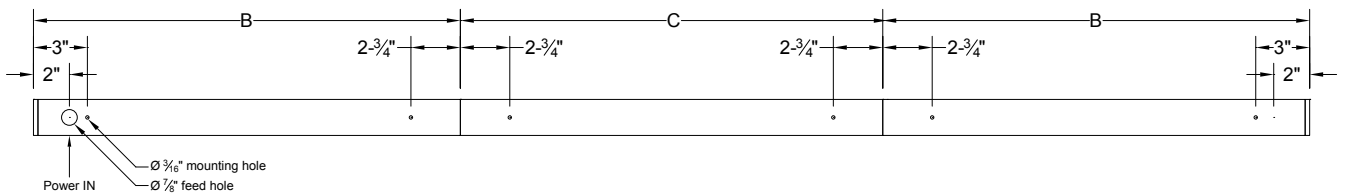
RUN INFORMATION

Back Plan - Surface Mount Single Fixture Option



SN

Back Plan - Surface Mount Continuous Run Option

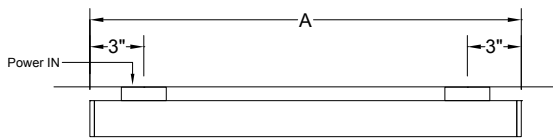


ST

AD

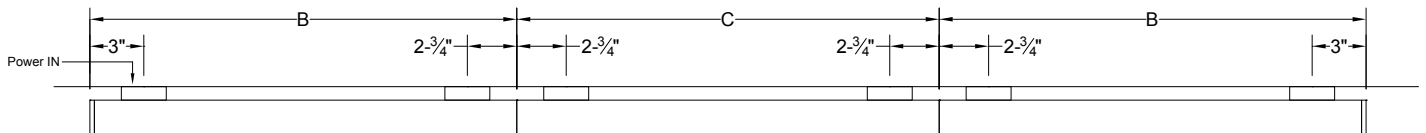
TR

Plan - Wall Mount Single Fixture Option



SN

Plan - Wall Mount Continuous Fixture Option



ST

AD

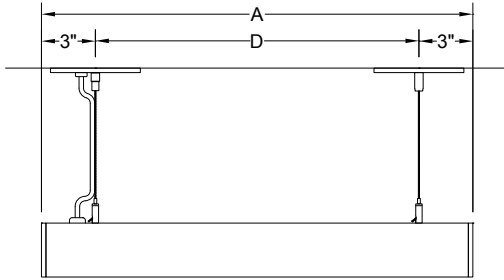
TR

HCB01 | Swell

2" wide LED luminaire with flush lens, Illuminated by BIOS®

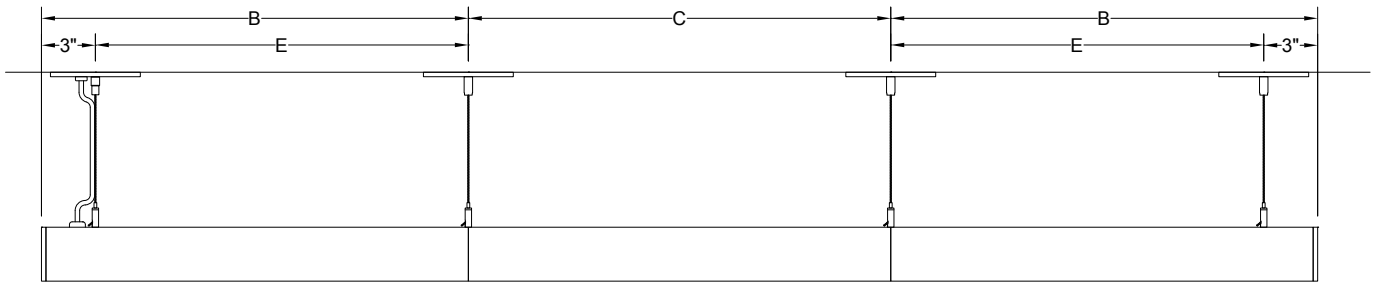
RUN INFORMATION

Side View - Cable Mount Single Fixture Option



SN

Side View - Cable Mount Continuous Run Option



ST

AD

TR