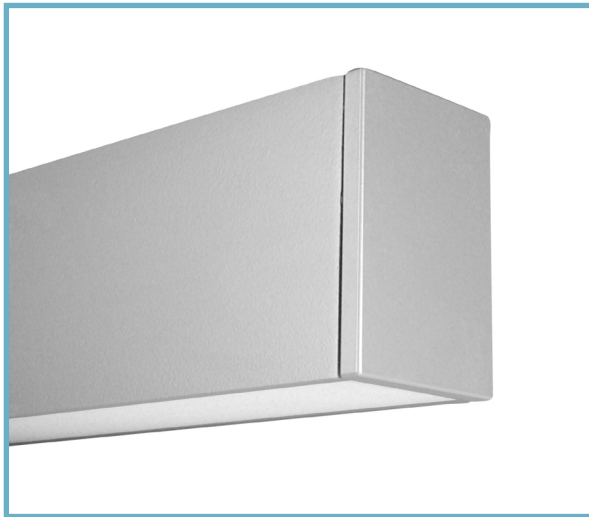


HCB01 | Swell™ GENERAL INFORMATION



Rectilinear LED luminaire with flush lens Illuminated by BIOS®

Project: _____ Type: _____



FEATURES

The HCB01 is a linear LED luminaire tailored for health-centric lighting installations. The 2" wide by 3" tall extrusion is fitted with a flush, frosted lens and machined aluminum end caps.

The HCB01 fixture is embedded with BIOS SkyBlue® circadian solutions to produce the healthy "blue sky" light signal needed to stimulate human circadian biology. This specific light wavelength communicates directly with human biology through a non-visual photoreceptor to regulate circadian rhythms, providing healthier sleep patterns and ultimately, better health.

SPECIFICATIONS

Fixture constructed of an extruded aluminum housing, extruded, frosted acrylic lens and machined aluminum end caps
Model variations offered for surface, wall mount and cable suspended applications

Standard finishes as shown below

Available in nominal lengths of 2', 4', 6' and 8' single fixtures and continuous runs

Basic continuous run fixtures provided with 18 ga. wiring harness for 6 Amp maximum load (consult factory for runs requiring multiple circuits, sensor integration, etc.)

Standard integral 120-277V driver offered with 0-10V dimming or non-dim

Integral 120-277V emergency battery backup available for 4' or 8' nominal non-dim or 0-10V (consult factory for all other lengths/drivers)

Standard light outputs are 590 and 780 lumens per foot

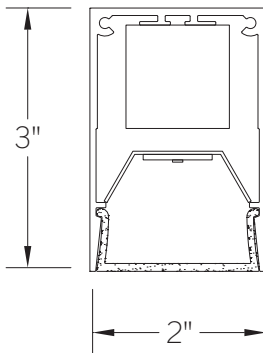
BIOS Static Spectrum or Dynamic LEDs available in 3000K, 3500K and 4000K, with a CRI of 80+ to 90 depending on color

Life: 50,000 hours L₇₀

Limited five year warranty

UL and C-UL listed for dry and damp locations

SECTION



PERFORMANCE

NOMINAL LENGTH	OUTPUT	LUMENS/ft.	WATTS/ft.	LUMINAIRE LUMENS	EFFICACY (LPW)
4'	R: regular	590	9.7	2201	61
	H: high	780	13.6	2908	58

Note: All data reflects fixture with BIOS Static Spectrum 3500K LEDs



HCB01 -

NOMINAL FIXTURE LENGTH*
2: 22-5/8"
4: 44-5/8"
6: 66-5/8"
8: 88-5/8"

CORRELATED COLOR TEMPERATURE
[BIOS static]
BS30: 3000K-85 CRI
BS35: 3500K-85 CRI
BS40: 4000K-90 CRI
[BIOS dynamic]
BD30: 3000K-83 CRI
BD35: 3500K-83 CRI
BD40: 4000K-83 CRI

DRIVER
ND: non-dimming
[Dimming]
D: 0-10V, 1%

LIGHT OUTPUT
(lumens per foot)
R: regular - 590
H: high - 780
CF: consult factory for custom output

MOUNT
SM: surface mount
WD: wall mount - direct
WI: wall mount - indirect
C4: cable mount 4' cable length
C8: cable mount 8' cable length

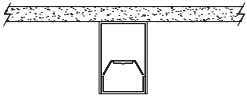
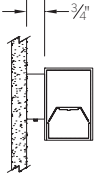
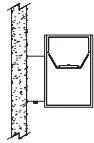
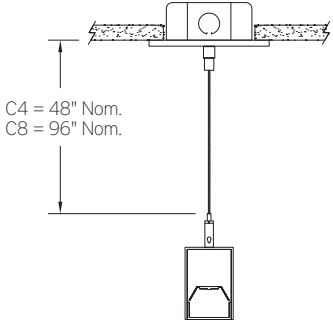
RUN CONFIGURATION
SN: single
ST: starter
AD: adder
TR: terminator

OPTIONS
ED: emergency driver (4' or 8' non-dim or 0-10V only)
S1: occ sensor pos.1 (see options section)
L: louver (4' and 8' ONLY)


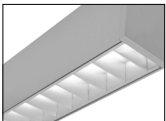
FINISH
AW: architectural white (semi-matte)
WH: white (semi-gloss)
BL: black (semi-matte)
MB: matte black
ESS: environmental satin silver
BZ: bronze
PR: primer
CF: consult factory for custom finish
SA: satin anodize (may require additional lead time)

* Actual dimension dependent on run configuration

MOUNTING

	ORDERING CODE	DESCRIPTION
	SM	SURFACE MOUNT Use appropriate fastener through Ø3/16" holes in housing
	WD	WALL MOUNT – DIRECT ORIENTATION Mounting option includes: • 1-7/8" H x 2-1/2" W aluminum bracket projects the fixture housing 3/4:" from the wall surface
	WI	WALL MOUNT – INDIRECT ORIENTATION Mounting option includes: • 1-7/8" H x 2-1/2" W aluminum bracket projects the fixture housing 3/4:" from the wall surface
	C4 and C8	CABLE MOUNT Mounting option includes: • Ø 1/16" x 48" (C4) or 96" (C8) aircraft cables • 60" (C4) or 108" (C8) power cable (in coordinating finish) • Bracket bars • Ø 5" white canopies • Ceiling couplers • Side exit cable grippers

OPTIONS

	ORDERING CODE	DESCRIPTION	SPECIFICATIONS
	ED	EMERGENCY LED DRIVER	<ul style="list-style-type: none"> • Universal 120-277V input voltage emergency driver delivers initial minimum power of 10W for 90 minutes • Available for 4' or 8' nominal length non-dim or 0-10V fixture only (consult factory for all other lengths/drivers) <p>Note: remote battery backup available for shorter fixture lengths - ordered separately, consult factory for details</p> <ul style="list-style-type: none"> • Indicator/test switch located on the top for C4/C8 mount and on the side at an end for SM mount
		OCCUPANCY SENSOR	Passive infrared occupancy sensor with hold-off daylighting adjustment (10-120 foot candles) and time delay adjustment from 30 seconds to 30 minutes Light aperture length reduced by 4"
	S1	OCCUPANCY SENSOR - POSITION 1	Sensor located on underside at an end
	L	LOUVER	Parabolic louver with 5/8" blades at 1" spacing, formed from diffuse, high reflectance aluminum and supplied with light diffusion film