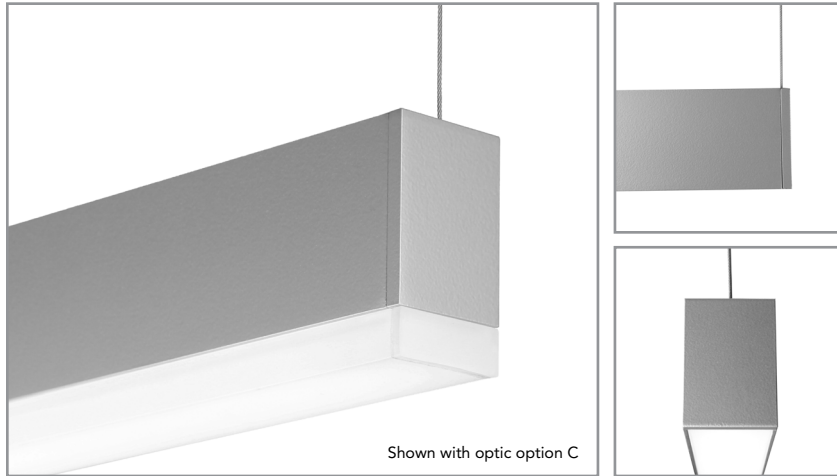


Project: \_\_\_\_\_ Type: \_\_\_\_\_



## FEATURES

The Grom series GRM20 is a miniature, linear architectural luminaire for general lighting use. The 1-3/8" wide by 2" tall extruded aluminum fixture is available for surface or cable mounting. An integral, miniature 0-10V dimming or non-dimming driver with multiple output options powers 90+ CRI LEDs. Extruded, frosted acrylic lenses are available in a flush and two drop profile options.

## SPECIFICATIONS

Fixture constructed of an extruded aluminum housing, extruded acrylic lenses and machined aluminum end caps  
 Model variations offered for surface and cable suspended applications

Standard finishes as shown below

Available in nominal lengths of 2'-8' single fixtures and continuous runs

Standard integral 120-277V driver offered with 0-10V dimming or non-dim

Remote mounted emergency battery backup available (ordered separately, consult factory for details)

Standard light outputs range from 470 to 630 lumens per foot, depending on optic option

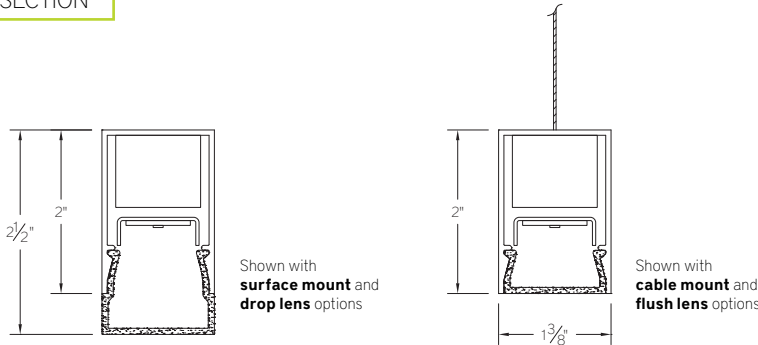
LEDs available in 2700K, 3000K, 3500K and 4000K, within a 3 step MacAdam ellipse, all with 90+ CRI typical

Life: 50,000 hours L<sub>70</sub>

Limited five year warranty

UL and C-UL listed for dry and damp locations

## SECTION



## PERFORMANCE

Note: All data reflects fixtures with 3500K LEDs

NOMINAL LENGTH	OPTIC CONFIGURATION	OUTPUT	LUMENS/ft.	WATTS/ft.	LUMINAIRE LUMENS	EFFICACY (LPW)
4'	Direct - flush lens	R: regular	470	5.1	1898	93
		H: high	610	6.7	2460	91
	Direct - drop lens, luminous ends	R: regular	485	5.1	1958	96
		H: high	630	6.7	2536	94



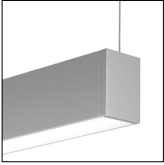

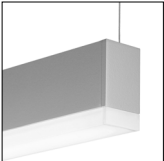
## GRM20 -

<b>NOMINAL FIXTURE LENGTH*</b> 23: 22-5/8"    61: 61-1/8" 24: 24-1/8"    67: 66-5/8" 28: 28-1/8"    72: 72-1/8" 34: 33-5/8"    78: 77-5/8" 39: 39-1/8"    83: 83-1/8" 45: 44-5/8"    89: 88-5/8" 48: 48-1/8"    96: 96-1/8" 50: 50-1/8"    RUN ‡ 56: 55-5/8"	<b>DRIVER</b> ND: non-dimming <b>[Dimming]</b> D: 0-10V, 1%	<b>LIGHT OUTPUT</b> (lumens per foot w/ optic option C) R: regular - 485 H: high - 630	<b>LENS</b> A: flush lens B: drop lens - solid end C: drop lens - luminous end	<b>MOUNT</b> SM: surface mount C4: cable mount 4' cable length C8: cable mount 8' cable length CF: consult factory for custom mounting	<b>RUN CONFIGURATION</b> SN: single ST: starter AD: adder TR: terminator	<b>FINISH</b> AW: architectural white (semi-matte) WH: white (semi-gloss) BL: black (semi-matte) MB: matte black ESS: environmental satin silver BZ: bronze PR: primer CF: consult factory for custom finish SA: satin anodize (may require additional lead time)
<b>CORRELATED COLOR TEMPERATURE</b> 27: 2700K-90+ CRI 30: 3000K-90+ CRI 35: 3500K-90+ CRI 40: 4000K-90+ CRI						

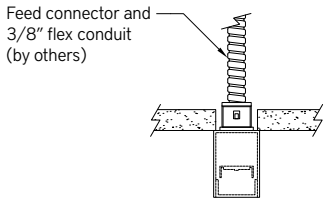
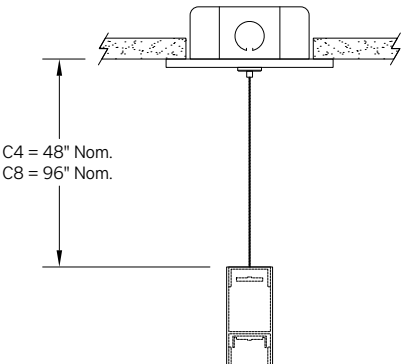
\* Actual dimension dependent on run configuration

‡ Specify run length to the nearest 1". Factory will configure using the least quantity of fixtures as close to the desired run length as possible. Run to be confirmed with a shop drawing.

## LENS OPTIONS

	ORDERING CODE	DESCRIPTION	SPECIFICATIONS
	A	FLUSH LENS	Flush frosted acrylic extrusion
	B	DROP LENS – SOLID END	1/2" H frosted acrylic extrusion with full height aluminum end cap
	C	DROP LENS – LUMINOUS END	1/2" H frosted acrylic extrusion with matching acrylic end cap

## MOUNTING

	ORDERING CODE	DESCRIPTION
 <p>Feed connector and 3/8" flex conduit (by others)</p>	SM	<p>SURFACE MOUNT</p> <p>Use appropriate fastener through Ø3/16" holes in housing. Single (SN) and Starter (ST) fixtures provided with Ø7/8" feed hole for use with snap-in style electrical connectors (by others)</p>
 <p>C4 = 48" Nom. C8 = 96" Nom.</p>	C4 and C8	<p>CABLE MOUNT</p> <p>Mounting option includes:</p> <ul style="list-style-type: none"> <li>• Ø 1/32" x 48" (C4) or 96" (C8) aircraft cables</li> <li>• 60" (C4) or 108" (C8) low voltage cable (in coordinating finish)</li> <li>• Bracket bars</li> <li>• Ø 5" white canopies</li> <li>• Canopy mount cable grippers</li> </ul>

## LENGTH/MOUNTING DIMENSIONS

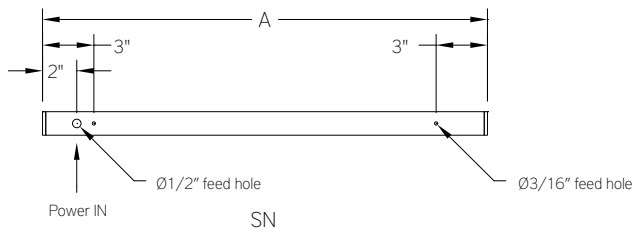
ORDERING CODE	LENGTH A	LENGTH B	LENGTH C
23	22-5/8"	22-7/16"	22-1/4"
24	24-1/8"	23-15/16"	23-3/4"
28	28-1/8"	27-15/16"	27-3/4"
34	33-5/8"	33-7/16"	33-1/4"
39	39-1/8"	39-15/16"	38-3/4"
45	44-5/8"	44-7/16"	44-1/4"
48	48-1/8"	47-15/16"	47-3/4"
50	50-1/8"	49-15/16"	49-3/4"
56	55-5/8"	55-7/16"	55-1/4"
61	61-1/8"	90-15/16"	60-3/4"
67	66-5/8"	66-7/16"	66-1/4"
72	72-1/8"	71-15/16"	71-3/4"
78	77-5/8"	77-7/16"	77-1/4"
83	83-1/8"	82-15/16"	82-3/4"
89	88-5/8"	88-7/16"	88-1/4"
96	96-1/8"	95-15/16"	95-3/4"

## RUN CONFIGURATION INFORMATION

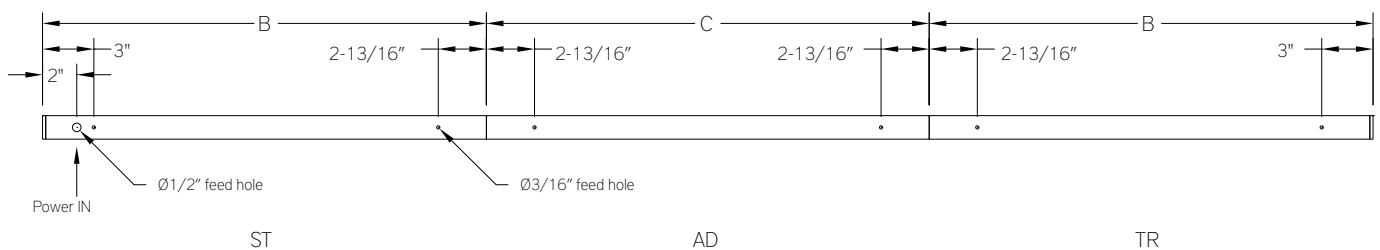
ORDERING CODE	DESCRIPTION
SN	Single
ST	Starter
AD	Adder
TR	Terminator

## RUN INFORMATION

Back Plan - Surface Mount Single Fixture

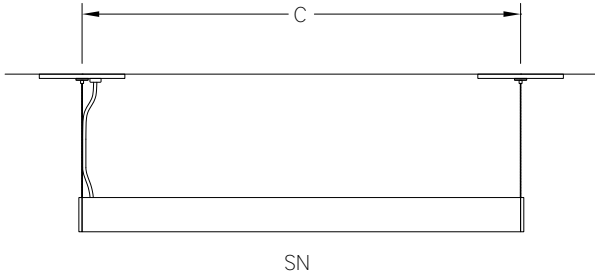


Back Plan - Surface Mount Continuous Run



RUN INFORMATION

Side View - Single Fixture



Side View - Continuous Run

