

## LENGTH / MOUNTING DIMENSIONS

ORDERING CODE	LENGTH A*	LENGTH B*	LENGTH C*	LENGTH D*	LENGTH E*
2	22-3/4"	22-1/2"	22-1/4"	16-3/4"	19-1/2"
3	33-3/4"	33-1/2"	33-1/4"	27-3/4"	30-1/2"
4	44-3/4"	44-1/2"	44-1/4"	38-3/4"	41-1/2"
5	55-3/4"	55-1/2"	55-1/4"	49-3/4"	52-1/2"
6	66-3/4"	66-1/2"	66-1/4"	60-3/4"	63-1/2"
8	77-3/4"	77-1/2"	77-1/4"	71-3/4"	74-1/2"
9	88-3/4"	88-1/2"	88-1/4"	82-3/4"	85-1/2"

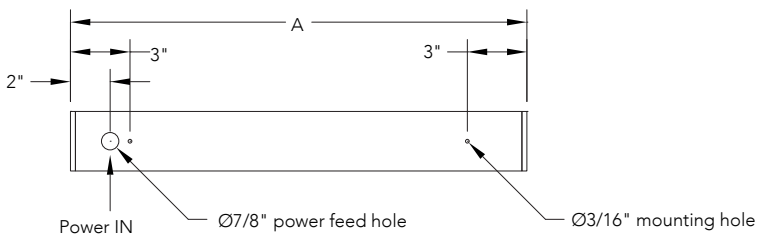
## RUN CONFIGURATION INFORMATION

ORDERING CODE	DESCRIPTION
SN	Single
ST	Starter
AD	Adder
TR	Terminator

\* Add 4" to dimension for any fixture using the S1, S2 or S3 occupancy sensor option

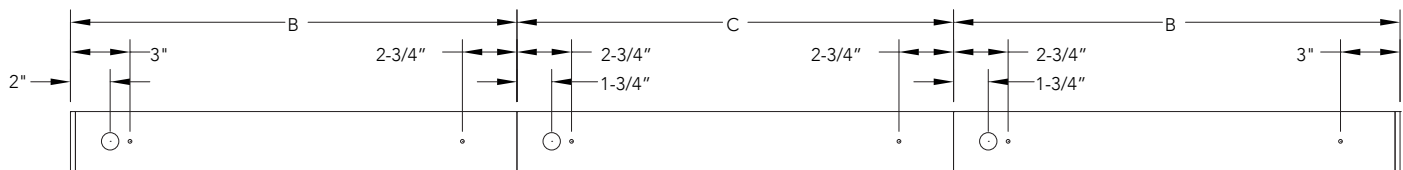
## RUN INFORMATION

### Back Plan - Surface Mount Single Fixture Option



SN

### Back Plan - Surface Mount Continuous Run Option

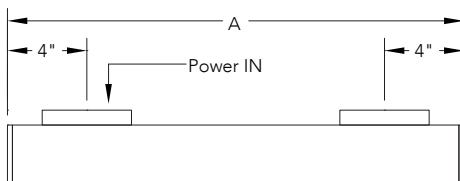


ST

AD

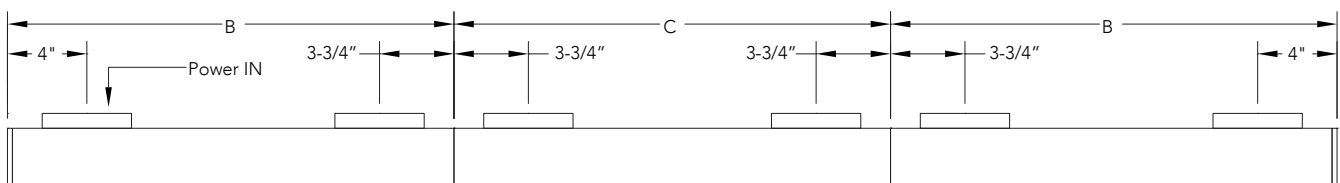
TR

### Plan - Wall Mount Single Fixture Option



SN

### Plan - Wall Mount Continuous Fixture Option



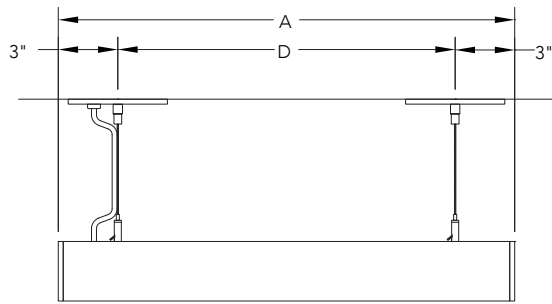
ST

AD

TR

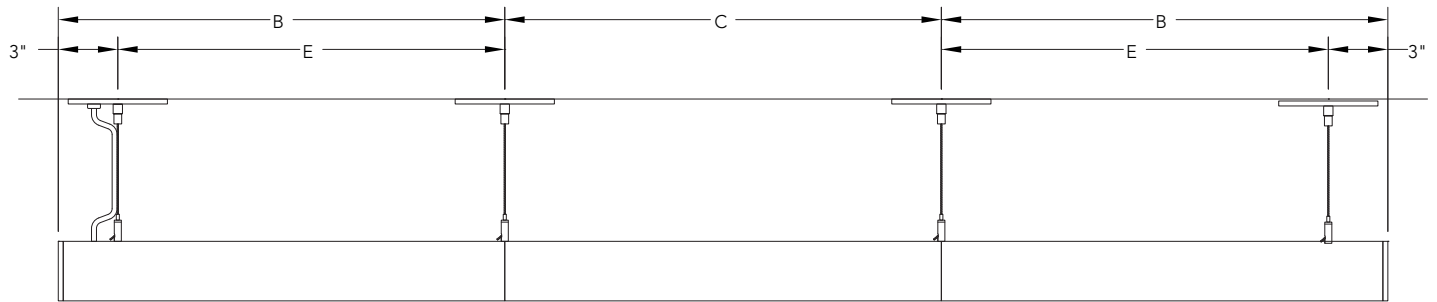
RUN INFORMATION

### Side View - Cable Mount Single Fixture Option



SN

### Side View - Cable Mount Continuous Run Option



ST

AD

TR