

# BSS208 | **bodhi**

2" wide LED luminaire with flush lens

Project: \_\_\_\_\_ Type: \_\_\_\_\_



## FEATURES

The BSS208 is a linear LED luminaire for general lighting applications. The 2" wide by 3" tall extrusion is fitted with a flush, frosted lens and machined aluminum end caps. Surface, cable or wall mounting options are available, as well as a variety of dimming drivers and light outputs, to maximize the versatility of this clean design luminaire.

## SPECIFICATIONS

Fixture constructed of an extruded aluminum housing, extruded, frosted acrylic lens and machined aluminum end caps

Model variations offered for surface, wall mount and cable suspended applications with Lambertian and Asymmetric distribution options

Standard finishes as shown below

Available in nominal lengths of 2'-8' single fixtures and continuous runs

Basic continuous run fixtures provided with 18 ga. wiring harness for 6 Amp maximum load (consult factory for runs requiring multiple circuits, sensor integration, etc.)

Standard integral 120-277V driver offered with 0-10V dimming or non-dim (other dimming driver options available)

Integral 120-277V emergency battery backup available for 4' nominal non-dim or 0-10V (consult factory for all other lengths/drivers)

Standard light outputs range from 485 to 1200 lumens per foot, depending on optic option

LEDs available in 2700K, 3000K, 3500K and 4000K, within a 3 step MacAdam ellipse, all with 90+ CRI typical

Passive infrared occupancy sensor and parabolic louver available

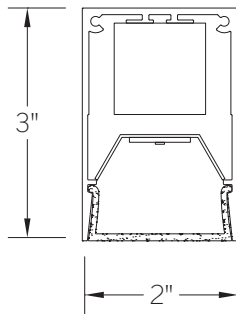
Life: 50,000 hours L<sub>70</sub>

Limited five year warranty

UL and C-UL listed for dry and damp locations



## SECTION



## PERFORMANCE

NOMINAL LENGTH	OPTIC OPTION	OUTPUT	LUMENS/ft.	WATTS/ft.	LUMINAIRE LUMENS	EFFICACY (LPW)
4'	Lambertian	L: low	485	5.6	1795	86
		R: regular	625	7.8	2331	81
		H: high	825	10.8	3063	76
	Asymmetric-Direct	L: low	580	5.4	2155	108
		R: regular	790	7.6	2933	103
		H: high	1200	12.4	4454	97

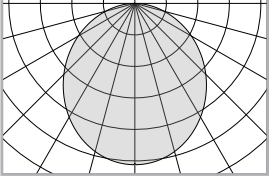
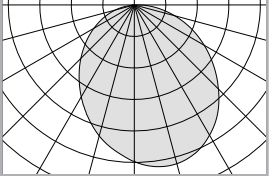
\*Note: All data reflects fixture with 3500K LEDs and Lambertian distribution option

## BSS208 -


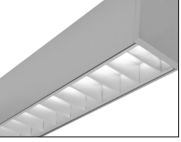
<b>NOMINAL FIXTURE LENGTH*</b> 2: 22-5/8" 3: 33-5/8" 4: 44-5/8" 5: 55-5/8" 6: 66-5/8" 7: 77-5/8" 8: 88-5/8"	<b>CORRELATED COLOR TEMPERATURE</b> 27: 2700K-90+ CRI 30: 3000K-90+ CRI 35: 3500K-90+ CRI 40: 4000K-90+ CRI	<b>DRIVER</b> ND: non-dimming <b>[Dimming]</b> D: 0-10V, 1% HES: Lutron EcoSystem, soft-on/fade-to-black, 1% H2: Lutron Hi-lume 2-wire forward phase, 1%, (120V ONLY) EL: eldoLED ECOdrive 0-10V, 1%	<b>LIGHT OUTPUT</b> (lumens per foot w/optic option 1) L: low - 485 R: regular - 625 H: high - 825 CF: consult factory for custom output	<b>MOUNT</b> SM: surface mount WD: wall mount - direct WI: wall mount - indirect C4: cable mount 4' cable length C8: cable mount 8' cable length	<b>RUN CONFIGURATION</b> SN: single ST: starter AD: adder TR: terminator	<b>FINISH</b> AW: architectural white (semi-matte) WH: white (semi-gloss) BL: black (semi-matte) MB: matte black ESS: environmental satin silver BZ: bronze PR: primer CF: consult factory for custom finish	
			<b>OPTIC</b> 1: Lambertian 2: Asymmetric-Direct ‡			<b>OPTIONS</b> ED: emergency driver (4' non-dim or 0-10V only) S1A: occ sensor pos.1, 100%-0% (see options section) S1B: occ sensor pos.1, 100%-50% (see options section) L: louver (4' and 8' ONLY)	SA: satin anodize (may require additional lead time)

\* Actual dimension dependent on run configuration and sensor option  
 ‡ Asymmetric-Direct distribution option applies to SM, WD, C4 and C8 mounting only.

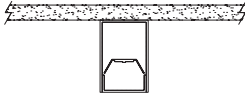
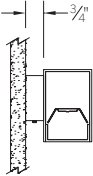
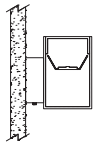
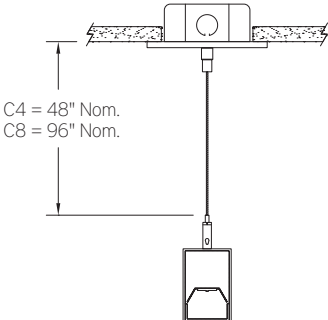
OPTIC OPTION

	ORDERING CODE	DESCRIPTION	SPECIFICATIONS
	1	Lambertian Distribution	Frosted extruded acrylic lens for general Lambertian distribution
	2	Asymmetric - Direct	Frosted extruded acrylic lens for asymmetric distribution in direct orientations <i>(not available for WI mounting option)</i>

OPTIONS

	ORDERING CODE	DESCRIPTION	SPECIFICATIONS
	ED	EMERGENCY LED DRIVER	<ul style="list-style-type: none"> <li>• Universal 120-277V input voltage emergency driver delivers initial minimum power of 10W for 90 minutes</li> <li>• Available for 4' nominal length non-dim or 0-10V fixture only (consult factory for all other lengths/drivers)</li> <li>• Indicator/test switch located on the top for C4/C8 mount and on the side at an end for SM mount</li> </ul>
		OCCUPANCY SENSOR	<ul style="list-style-type: none"> <li>• Passive infrared occupancy sensor with hold-off daylighting adjustment (10-120 foot candles) and time delay adjustment from 30 seconds to 30 minutes</li> <li>• Light aperture length reduced by 4"</li> <li>• Consult factory for custom output</li> </ul>
	S1A	Occupancy sensor - position 1, 100% - 0%	Sensor located on the top at an end, with 100% - 0% light output setting
	S1B	Occupancy sensor - position 1, 100% - 50%	Sensor located on the top at an end, with 100% - 50% light output setting
	L	LOUVER	<ul style="list-style-type: none"> <li>• Parabolic louver with 5/8" blades at 1" spacing, formed from diffuse, high reflectance aluminum and supplied with light diffusion film</li> <li>• Available for 4' and 8' nominal length fixtures</li> </ul>

MOUNTING

	ORDERING CODE	DESCRIPTION
	SM	<p>SURFACE MOUNT</p> <p>Use appropriate fastener through <math>\varnothing 3/16''</math> holes in housing</p>
	WD	<p>WALL MOUNT – DIRECT ORIENTATION</p> <p>Mounting option includes:</p> <ul style="list-style-type: none"> <li>• 1-7/8" H x 2-1/2" W aluminum bracket projects the fixture housing 3/4:" from the wall surface</li> </ul>
	WI	<p>WALL MOUNT – INDIRECT ORIENTATION</p> <p>Mounting option includes:</p> <ul style="list-style-type: none"> <li>• 1-7/8" H x 2-1/2" W aluminum bracket projects the fixture housing 3/4:" from the wall surface</li> </ul>
	C4 and C8	<p>CABLE MOUNT</p> <p>Mounting option includes:</p> <ul style="list-style-type: none"> <li>• <math>\varnothing 1/16'' \times 48''</math> (C4) or <math>96''</math> (C8) aircraft cables</li> <li>• 60" (C4) or 108" (C8) power cable (in coordinating finish)</li> <li>• Bracket bars</li> <li>• <math>\varnothing 5''</math> white canopies</li> <li>• Ceiling couplers</li> <li>• Side exit cable grippers</li> </ul>

## LENGTH/MOUNTING DIMENSIONS

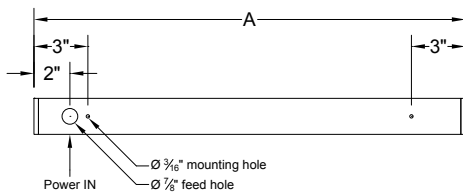
ORDERING CODE	LENGTH A	LENGTH B	LENGTH C	LENGTH D	LENGTH E
2	22-5/8"	22-3/8"	22-1/8"	16-5/8"	19-3/8"
3	33-5/8"	33-3/8"	33-1/8"	27-5/8"	30-3/8"
4	44-5/8"	44-3/8"	44-1/8"	38-5/8"	41-3/8"
5	55-5/8"	55-3/8"	55-1/8"	49-5/8"	52-3/8"
6	66-5/8"	66-3/8"	66-1/8"	60-5/8"	63-3/8"
7	77-5/8"	77-3/8"	77-1/8"	71-5/8"	74-3/8"
8	88-5/8"	88-3/8"	88-1/8"	82-5/8"	85-3/8"

## RUN CONFIGURATION INFORMATION

ORDERING CODE	DESCRIPTION
SN	Single
ST	Starter
AD	Adder
TR	Terminator

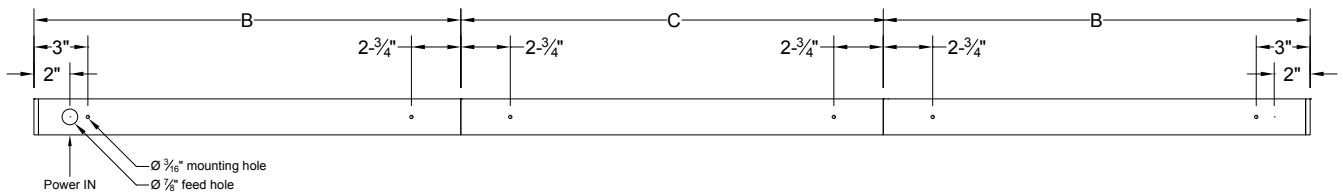
## RUN INFORMATION

### Back Plan - Surface Mount Single Fixture Option



SN

### Back Plan - Surface Mount Continuous Run Option

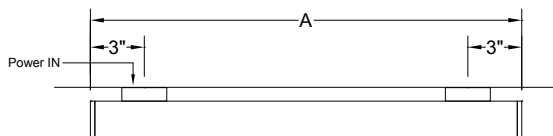


ST

AD

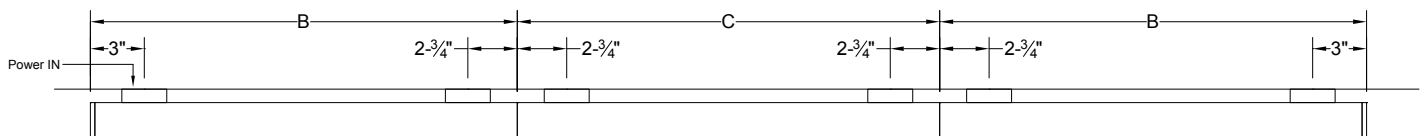
TR

### Plan - Wall Mount Single Fixture Option



SN

### Plan - Wall Mount Continuous Fixture Option



ST

AD

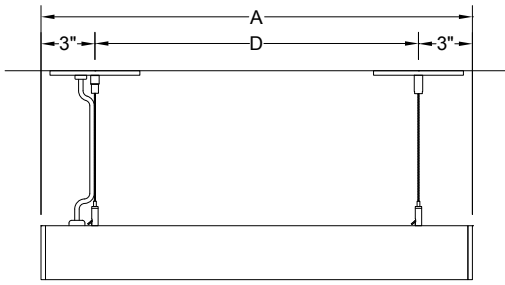
TR

# BSS208 | **bodhi**

2" wide LED luminaire with flush lens

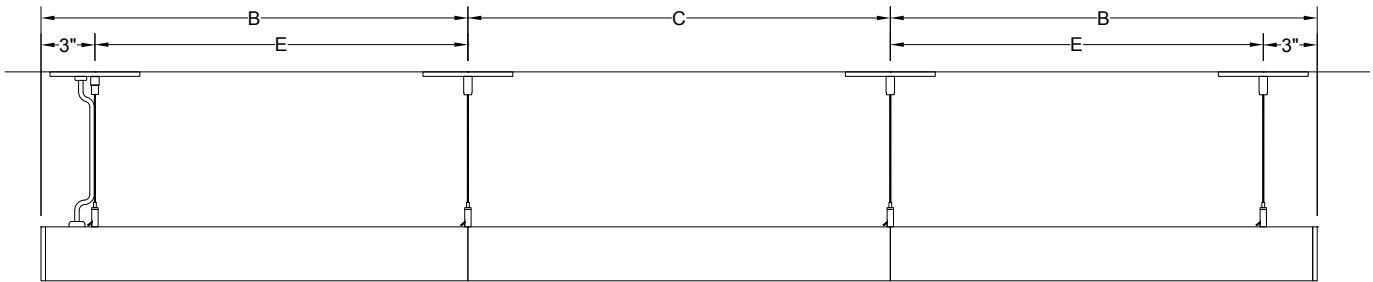
## RUN INFORMATION

Side View - Cable Mount Single Fixture Option



SN

Side View - Cable Mount Continuous Run Option



ST

AD

TR