

BSS208 | **bodhi**

2" wide LED luminaire with flush lens

Project: _____ Type: _____



Highlighted fields denote QuickShip Options. See complete 7-Day QuickShip Terms and Conditions available at www.bartcolighting.com/quickship-products/. Purchase order must reference "QuickShip".

FEATURES

The BSS208 is a linear LED luminaire for general lighting applications. The 2" wide by 3" tall extrusion is fitted with a flush lens and machined aluminum end caps. Surface, cable or wall mount variants are available, as well as a multiple optic options, dimming drivers and light outputs. The BSS208 is Controls Capable, being offered with a variety of integrated control options.

Fixture with certain options available for 7-Day QuickShip.

SPECIFICATIONS

Fixture constructed of an extruded aluminum housing, extruded, frosted acrylic lens and machined aluminum end caps.

Model variations offered for surface, wall mount and cable suspended applications.

Optic options include an acrylic frosted flush, acrylic Fresnel wall wash lens (for surface or cable mount fixtures) and flat blade louver.

Standard finishes as shown below.

Available in nominal lengths of 2'-8' single fixtures and continuous runs.

Basic continuous run fixtures provided with 18 ga. wiring harness for 6 Amp maximum load (consult factory for runs requiring multiple circuits, sensor integration, etc.).

Standard integral 120-277V driver offered with 0-10V dimming or non-dim (other dimming driver options available).

Integral 120-277V emergency battery backup available for 4' nominal non-dim or 0-10V (consult factory for all other lengths/drivers).

Standard light outputs are 485, 625 and 825 lumens per foot for the Lambertian optic option.

LEDs available in 2700K, 3000K, 3500K and 4000K, within a 3 step MacAdam ellipse, all with 90+ CRI typical.

Bartco Lighting Controls Capable fixture available with integrated controls from a variety of suppliers.

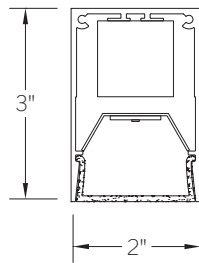
Life: 50,000 hours L_{70}

Limited five year warranty.

UL and C-UL listed for dry and damp locations.



SECTION

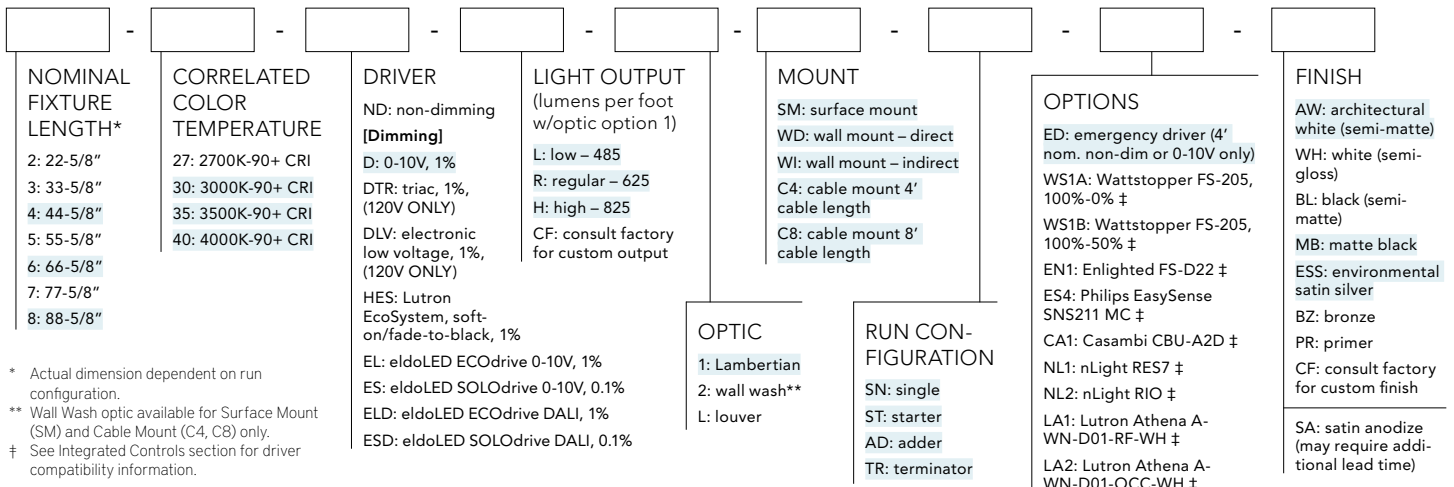


PERFORMANCE

Note: All data reflects fixture with 3500K LEDs

NOMINAL LENGTH	OPTIC OPTION	OUTPUT	LUMENS/ft.	WATTS/ft.	LUMINAIRE LUMENS	EFFICACY (LPW)
4'	Lambertian	L: low	485	5.6	1795	86
		R: regular	625	7.8	2331	81
		H: high	825	10.8	3063	76

BSS208 -

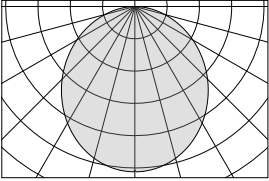
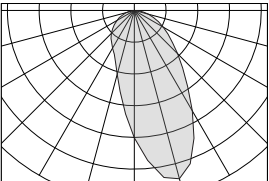


* Actual dimension dependent on run configuration.

** Wall Wash optic available for Surface Mount (SM) and Cable Mount (C4, C8) only.

‡ See Integrated Controls section for driver compatibility information.

OPTIC

ORDERING CODE	DESCRIPTION	SPECIFICATIONS
	1 LAMBERTIAN DISTRIBUTION	Frosted extruded acrylic lens for general Lambertian distribution
	2 WALL WASH	Acrylic extrusion with optically engineered Fresnel prisms for wall wash applications. Available for Surface (SM) or Cable (C4, C8) mounting only. Optimized for placement 18"-24" from a wall surface. Uniformity ratio as low as 4:1.
L	LOUVER	2" W Flat blade louver with 5/8" blades at 7/8" spacing, formed from sheet steel. Finish is Environmental Satin Silver (consult factory for alternate finishes). Supplied with light diffusion film.







OPTIONS

ORDERING CODE	DESCRIPTION	SPECIFICATIONS
ED	EMERGENCY LED DRIVER	<ul style="list-style-type: none"> • Universal 120-277V input voltage emergency driver delivers initial minimum power of 10W for 90 minutes. • Available for 4' nominal length non-dim or 0-10V fixture only (consult factory for all other lengths/drivers). • Indicator/test switch located on the top for C4/C8 mount and on the side at an end for SM mount.

OPTIONS - INTEGRATED CONTROLS

Note: Control option takes up 4" of the overall lens length.
Controls are mounted to flush filler piece.



	ORDERING CODE	LIGHT OUTPUT SETTING	MODEL	CONTROL PROTOCOL	FUNCTIONS	COMPATIBLE DRIVERS
 legrand WATTSTOPPER®	WS1A	100% - 0% ¹	FS-205	N/A	PIR occupancy and light level sensor.	For use with on/off or 0-10V dimming drivers only.
	WS1B	100% - 50% ¹				
	EN1	Set during commissioning	FS-D22	Bluetooth Wireless	PIR occupancy, ambient light sensing, daylight harvesting, and environment monitoring for use within an Enlighted control network.	Provided with Advance sensor ready series 0-10V dimming drivers.
	ES4	Set during commissioning	SNS211 MC	Bluetooth Wireless	Occupancy, daylight harvesting and task tuning sensor with advance grouping, for use within a MasterConnect network.	Provided with Advance sensor ready series 0-10V dimming drivers.
	CA1	Set during commissioning	CBU-A2D	Bluetooth Wireless	0-10V/DALI driver controller, for use within a Casambi ecosystem.	For use with 0-10V or DALI drivers. Consult factory for details.
	NL1	Set during commissioning	RES7 ²	Radio Wireless	Dimming, PIR occupancy detection and daylight harvesting, for use within an nLight AIR network.	Provided with Advance sensor ready series or eldoLED 0-10V drivers.
	NL2		RIO ²		Dimming, for use within an nLight AIR network.	
	LA1	Set during commissioning	A-WN-D01-RF-WH	Radio Wireless	Dimming only for use with an Athena control system.	Provided with Advance sensor ready series or eldoLED 0-10V or eldoLED DALI-2 drivers.
	LA2		A-WN-D01-OCC-WH		Dimming, PIR occupancy and daylight sensor for use with an Athena control system.	

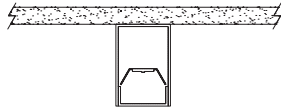
1. Consult factory for custom light output setting.

2. Consult your Acuity representative for application-specific model number.

MOUNTING

ORDERING CODE

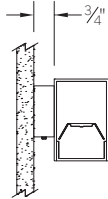
DESCRIPTION



SM

SURFACE MOUNT

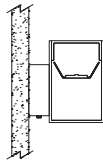
Use appropriate fastener through $\text{Ø}3/16''$ holes in housing



WD

WALL MOUNT - DIRECT ORIENTATION

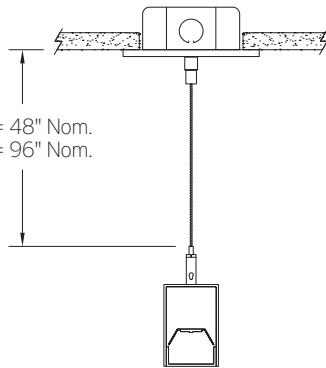
- 1-7/8" H x 4-1/2" W sheet aluminum bracket projects the fixture housing $3/4''$ from the wall surface.
- Bracket finish matches fixture finish, or ESS for satin anodize (SA) housing.



WI

WALL MOUNT - INDIRECT ORIENTATION

- 1-7/8" H x 4-1/2" W sheet aluminum bracket projects the fixture housing $3/4''$ from the wall surface.
- Bracket finish matches fixture finish, or ESS for satin anodize (SA) housing.



C4 = 48" Nom.
C8 = 96" Nom.

C4 and C8

CABLE MOUNT

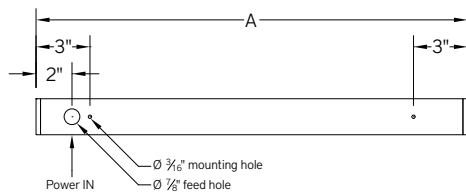
Mounting option includes:

- $\text{Ø} 1/16''$ x 48" (C4) or 96" (C8) aircraft cables
- 60" (C4) or 108" (C8) power cable (in coordinating finish)
- Bracket bars
- $\text{Ø} 5''$ white canopies
- Ceiling couplers
- Side exit cable grippers

LENGTH / MOUNTING DIMENSIONS						RUN CONFIGURATION INFORMATION	
ORDERING CODE	LENGTH A	LENGTH B	LENGTH C	LENGTH D	LENGTH E	ORDERING CODE	DESCRIPTION
2	22-5/8"	22-3/8"	22-1/8"	16-5/8"	19-3/8"	SN	Single
3	33-5/8"	33-3/8"	33-1/8"	27-5/8"	30-3/8"	ST	Starter
4	44-5/8"	44-3/8"	44-1/8"	38-5/8"	41-3/8"	AD	Adder
5	55-5/8"	55-3/8"	55-1/8"	49-5/8"	52-3/8"	TR	Terminator
6	66-5/8"	66-3/8"	66-1/8"	60-5/8"	63-3/8"		
7	77-5/8"	77-3/8"	77-1/8"	71-5/8"	74-3/8"		
8	88-5/8"	88-3/8"	88-1/8"	82-5/8"	85-3/8"		

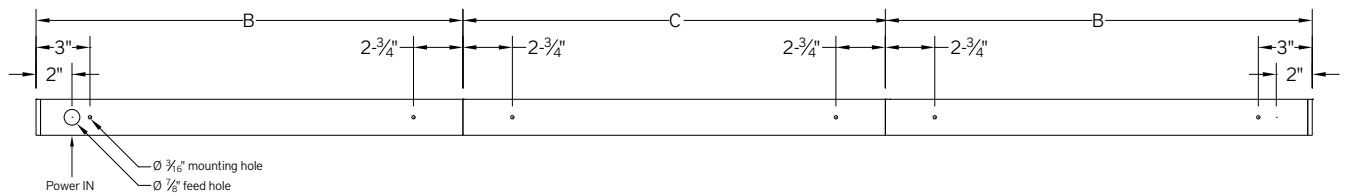
RUN INFORMATION

Back Plan - Surface Mount Single Fixture Option



SN

Back Plan - Surface Mount Continuous Run Option

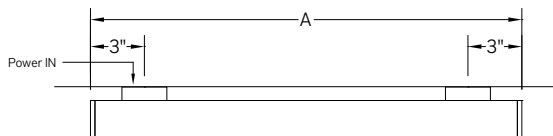


ST

AD

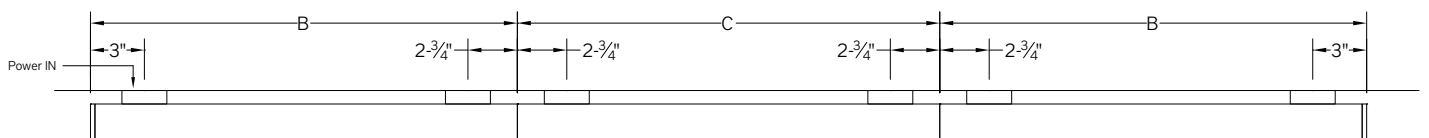
TR

Plan - Wall Mount Single Fixture Option



SN

Plan - Wall Mount Continuous Fixture Option



ST

AD

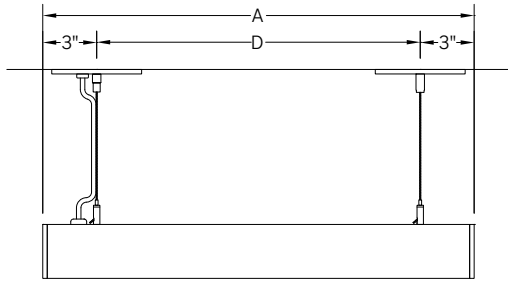
TR

BSS208 | **bodhi**

2" wide LED luminaire with flush lens

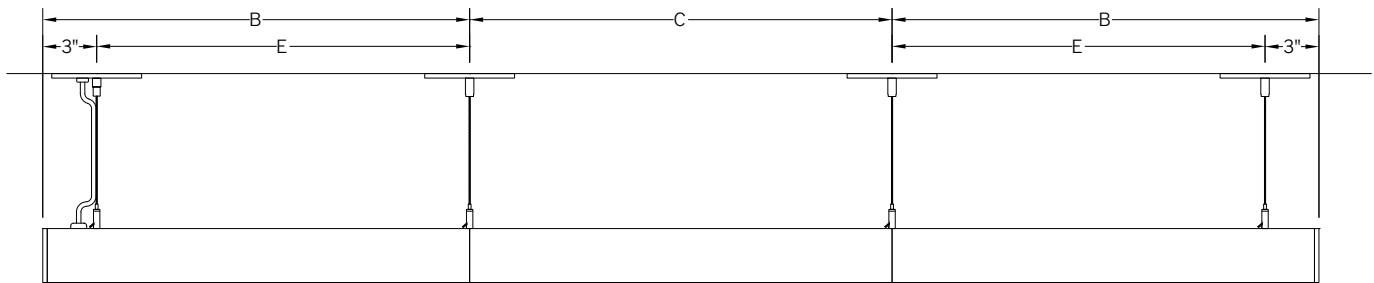
RUN INFORMATION

Side View - Cable Mount Single Fixture Option



SN

Side View - Cable Mount Continuous Run Option



ST

AD

TR