

BLT215 | GENERAL INFORMATION

3-1/8" wide steel rectilinear LED fixture with drop down lens

Project: _____ Type: _____



FEATURES

The BLT215 luminaire provides high performance with high value. The heavy gauge, sheet formed steel housing is offered in a 3-1/8" x 4" rectangular profile with a three-sided frosted acrylic lens. Multiple driver, light output and mounting options enable this basic linear fixture to provide great versatility in applications.

SPECIFICATIONS

Housing is formed and welded, 20 ga. steel, chemically treated to resist corrosion and enhance paint adhesion

Model variations offered for surface and cable suspended applications

Standard finishes as shown below

Available as single fixtures in nominal lengths of 2'-8'

Surface mount models include knock outs on the rear and surface or suspended models are available with optional end knock outs.

Standard integral 120-277V driver offered with 0-10V dimming or non-dim (other dimming driver options available)

Integral 120-277V emergency battery backup available for 4' nominal non-dim or 0-10V (consult factory for all other lengths/drivers)

Standard light outputs are 600, 840 or 1135 lumens per foot

LEDs available in 3000K, 3500K, 4000K, 5000K, within a 3 step MacAdam ellipse, all with 80+ CRI typical

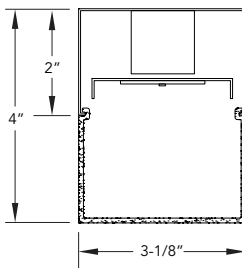
Life: 50,000 hours L₇₀

Passive infrared occupancy sensor available

Limited five year warranty

UL and C-UL listed for dry and damp locations

SECTION



PERFORMANCE

NOMINAL LENGTH	OUTPUT	LUMENS/ft.	WATTS/ft.	LUMINAIRE LUMENS	EFFICACY (LPW)
45"	L: low	600	5.0	2177	117
	R: regular	840	7.8	3100	108
	H: high	1135	11.1	4189	102

*Note: All data reflects fixtures with 3500K LEDs



BLT215 -

FIXTURE LENGTH

- 2: 22-5/16"
- 3: 33-5/16"
- 4: 44-5/16"
- 5: 55-5/16"
- 6: 66-5/16"
- 7: 77-5/16"
- 8: 88-5/16"

CORRELATED COLOR TEMPERATURE

- 30: 3000K-80+ CRI
- 35: 3500K-80+ CRI
- 40: 4000K-80+ CRI
- 50: 5000K-80+ CRI

DRIVER

[Non-Dimming]

leave blank for non-dimming

[Dimming]

- D: 0-10V, 1%
- HES: Lutron EcoSystem, soft-on/fade-to-black, 1%
- H2: Lutron Hi-Lume 2-wire forward phase, 1%, (120V ONLY)
- E5: Lutron EcoSystem 5-Series, 5%
- EL: eldoLED ECOdrive, 0-10V, 1%

LIGHT OUTPUT (lumens per foot)

- L: low - 600
- R: regular - 840
- H: high - 1135
- CF: consult factory for custom output

LENS

A: rectangular lens profile

OPTIONS

- EK: add end knock-outs
- ED: emergency driver (4' nom. non-dim or 0-10V only)
- S1: occ sensor pos.1 (see options section)
- S2: occ sensor pos.2 (see options section)
- S3: occ sensor pos.3 (see options section)

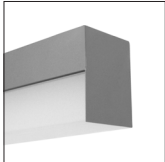
MOUNT

- SM: surface mount
- C4: cable mount 4' cable length
- C8: cable mount 8' cable length
- CF: consult factory for custom mounting

FINISH

- AW: architectural white (semi-matte)
- WH: white (semi-gloss)
- BL: black (semi-matte)
- MB: matte black
- ESS: environmental satin silver
- BZ: bronze
- PR: primer
- CF: consult factory for custom finish

LENS

ORDERING CODE	DESCRIPTION	SPECIFICATIONS
	A	RECTANGULAR ACRYLIC
		Frosted acrylic extrusion with rectangular profile

OPTIONS

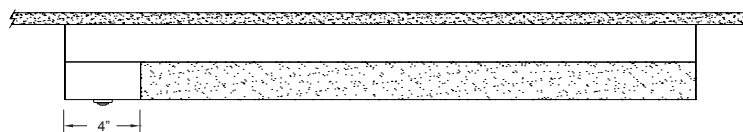
ORDERING CODE	DESCRIPTION	SPECIFICATIONS
EK	ADD END KNOCK OUTS	Ø 7/8" knock outs added at both fixture ends
ED	EMERGENCY LED DRIVER	<ul style="list-style-type: none"> • Universal 120-277V input voltage emergency driver delivers initial minimum power of 10W for 90 minutes • Available for 4' nominal length non-dim or 0-10V fixture only (consult factory for all other lengths/drivers)

OCCUPANCY SENSOR

Passive infrared occupancy sensor with hold-off daylighting adjustment (10-120 foot candles) and time delay adjustment from 30 seconds to 30 minutes
Sensor adds 4" to overall fixture length

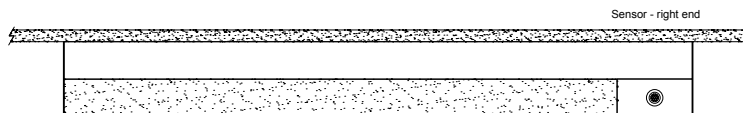
S1 OCCUPANCY SENSOR - POSITION 1

Sensor located on the top at an end



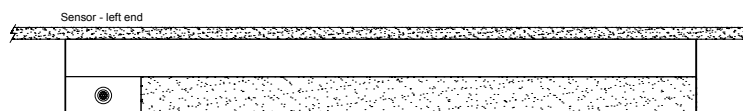
S2 OCCUPANCY SENSOR - POSITION 2

Sensor located on the side at the **right** end

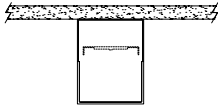
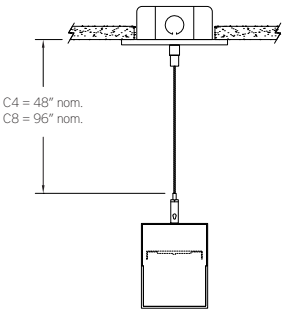


S3 OCCUPANCY SENSOR - POSITION 3

Sensor located on the side at the **left** end



MOUNTING

	ORDERING CODE	DESCRIPTION
	SM	<p>SURFACE MOUNT</p> <p>Use appropriate fastener through $\varnothing 3/16''$ holes in housing</p>
	C4 and C8	<p>CABLE MOUNT</p> <p>Mounting option includes:</p> <ul style="list-style-type: none"> • $\varnothing 1/16'' \times 48''$ (C4) or $96''$ (C8) aircraft cables • $60''$ (C4) or $108''$ (C8) power cable (in coordinating finish) • Bracket bars • $\varnothing 5''$ white canopies • Ceiling couplers • Side exit cable grippers