

BLT215 | BLT

3-1/8" wide sheet steel LED luminaire with drop lens

Project: _____ Type: _____



FEATURES

The BLT215 luminaire provides high performance with high value. The heavy gauge, sheet formed steel housing is offered in a 3-1/8" x 4" rectangular profile with a three-sided frosted acrylic lens. Multiple driver, light output and mounting options enable this basic linear fixture to provide great versatility in applications.

Fixture with certain options available for 7-Day QuickShip.

SPECIFICATIONS

Housing is formed and welded, 20 ga. steel, chemically treated to resist corrosion and enhance paint adhesion

Model variations offered for surface and cable suspended applications

Standard finishes as shown below

Available as single fixtures in nominal lengths of 2'-8'

Surface mount models include knock outs on the rear and surface or suspended models are available with optional end knock outs.

Standard integral 120-277V driver offered with 0-10V dimming or non-dim (other dimming driver options available)

Integral 120-277V emergency battery backup available for 4' nominal non-dim or 0-10V (consult factory for all other lengths/drivers)

Standard light outputs are 600, 840 or 1135 lumens per foot

LEDs available in 3000K, 3500K, 4000K, 5000K, within a 3 step MacAdam ellipse, all with 80+ CRI typical

Life: 50,000 hours L₇₀

Passive infrared occupancy sensor available

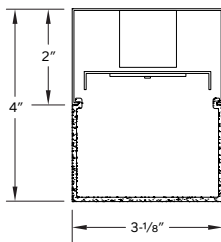
Limited five year warranty

UL and C-UL listed for dry and damp locations

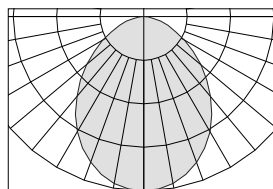


Highlighted fields denote QuickShip Options. See complete 7-Day QuickShip Terms and Conditions available at www.bartcolighting.com/quickship-products/. Purchase order must reference "QuickShip".

SECTION



DISTRIBUTION



PERFORMANCE

Note: All data reflects fixture with 3500K LEDs

NOMINAL LENGTH	OUTPUT	LUMENS/ft.	WATTS/ft.	LUMINAIRE LUMENS	EFFICACY (LPW)
4'	L: low	600	5.0	2177	117
	R: regular	840	7.8	3100	108
	H: high	1135	11.1	4189	102



BLT215 -

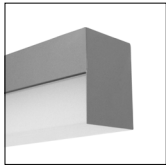
FIXTURE LENGTH	CORRELATED COLOR TEMPERATURE	DRIVER	LIGHT OUTPUT (lumens per foot)	LENS	OPTIONS	MOUNT	FINISH
2: 22-5/16"	30: 3000K-80+ CRI	ND: non-dimming [Dimming]	L: low - 600	A: rectangular lens profile	EK: add end knock-outs	SM: surface mount	AW: architectural white (semi-matte)
3: 33-5/16"	35: 3500K-80+ CRI	D: 0-10V, 1%	R: regular - 840		ED: emergency driver (4' nom. non-dim or 0-10V only)	WD: wall mount direct light	WH: white (semi-gloss)
4: 44-5/16"	40: 4000K-80+ CRI	DTR: triac, 1%, (120V ONLY)	H: high - 1135		S1A: occ sensor pos.1, 100% - 0% (see options section)	WI: wall mount indirect light	BL: black (semi-matte)
5: 55-5/16"	50: 5000K-80+ CRI	DLV: electronic low voltage, 1%, (120V ONLY)	CF: consult factory for custom output		S1B: occ sensor pos.1, 100% - 50% (see options section)	C4: cable mount 4' cable length	MB: matte black
6: 66-5/16"		HES: Lutron EcoSystem, soft-on/fade-to-black, 1%			S2A: occ sensor pos.2, 100% - 0% (see options section)	C8: cable mount 8' cable length	ESS: environmental satin silver
7: 77-5/16"		EL: eldoLED ECOdrive 0-10V, 1%			S2B: occ sensor pos.2, 100% - 50% (see options section)	CF: consult factory for custom mounting	BZ: bronze
8: 88-5/16"		ES: eldoLED SOLOdrive 0-10V, 0.1%			S3A: occ sensor pos.3, 100% - 0% (see options section)		PR: primer
		ELD: eldoLED ECOdrive DALI, 1%			S3B: occ sensor pos.3, 100% - 50% (see options section)		CF: consult factory for custom finish
		ESD: eldoLED SOLOdrive DALI, 0.1%					

BLT215 | BLT

3-1/8" wide sheet steel LED luminaire with drop lens

LENS

ORDERING CODE DESCRIPTION SPECIFICATIONS



A

RECTANGULAR ACRYLIC

Frosted acrylic extrusion with rectangular profile

OPTIONS

ORDERING CODE DESCRIPTION SPECIFICATIONS

EK

ADD END KNOCK OUTS

Ø 7/8" knock outs added at both fixture ends

Note: when the S1 option is added, only the end opposite the sensor receives a knock out

ED

EMERGENCY LED DRIVER

- Universal 120-277V input voltage emergency driver delivers initial minimum power of 10W for 90 minutes
- Available for 4' nominal length non-dim or 0-10V fixture only (consult factory for all other lengths/drivers)

OCCUPANCY SENSOR

- Passive infrared occupancy sensor with hold-off daylighting adjustment (10-120 foot candles) and time delay adjustment from 30 seconds to 30 minutes
- Sensor adds 4" to overall fixture length
- Consult factory for custom output

S1A

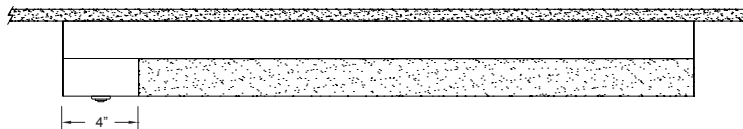
Occupancy sensor – position 1, 100% – 0%

Sensor located on the top at an end, with 100% – 0% light output setting

S1B

Occupancy sensor – position 1, 100% – 50%

Sensor located on the top at an end, with 100% – 50% light output setting



S2A

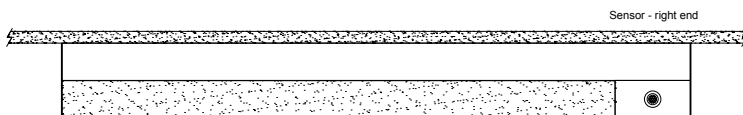
Occupancy sensor – position 2, 100% – 0%

Sensor located on the side at the **right** end, with 100% – 0% light output setting

S2B

Occupancy sensor – position 2, 100% – 50%

Sensor located on the side at the **right** end, with 100% – 50% light output setting

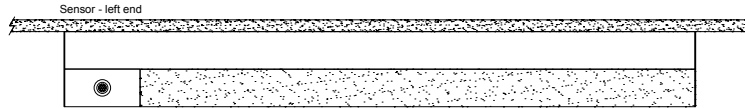


BLT215 | BLT

3-1/8" wide sheet steel LED luminaire with drop lens

OPTIONS

ORDERING CODE	DESCRIPTION	SPECIFICATIONS
S3A	Occupancy sensor – position 3, 100% – 0%	Sensor located on the side at the left end, with 100% – 0% light output setting
S3B	Occupancy sensor – position 3, 100% – 50%	Sensor located on the side at the left end, with 100% – 50% light output setting



MOUNTING

	ORDERING CODE	DESCRIPTION
	SM	SURFACE MOUNT Use appropriate fastener through $\text{Ø}3/16"$ holes in housing
	WD	WALL MOUNT – DIRECT ORIENTATION Mounting option includes: <ul style="list-style-type: none"> • 1-7/8" H x 4-1/2" W sheet aluminum bracket projects the fixture housing 3/4" from the wall surface
	WI	WALL MOUNT – INDIRECT ORIENTATION Mounting option includes: <ul style="list-style-type: none"> • 1-7/8" H x 4-1/2" W sheet aluminum bracket projects the fixture housing 3/4" from the wall surface
	C4 and C8	CABLE MOUNT Mounting option includes: <ul style="list-style-type: none"> • $\text{Ø} 1/16"$ x 48" (C4) or 96" (C8) aircraft cables • 60" (C4) or 108" (C8) power cable in coordinating finish • Bracket bars • $\text{Ø} 5"$ white canopies • Ceiling couplers • Side exit cable grippers

BLT215 | BLT

3-1/8" wide sheet steel LED luminaire with drop lens

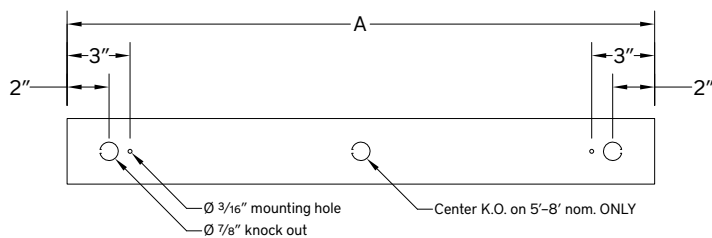
LENGTH / MOUNTING DIMENSIONS

ORDERING CODE	LENGTH A*	LENGTH B*
2	22-5/16"	16-5/16"
3	33-5/16"	27-5/16"
4	44-5/16"	38-5/16"
5	55-5/16"	49-5/16"
6	66-5/16"	60-5/16"
7	77-5/16"	71-5/16"
8	88-5/16"	82-5/16"

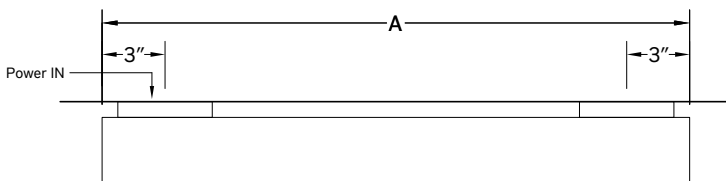
* Add 4" to "A" and "B" dimension when using the S1, S2 or S3 occupancy sensor option

LENGTH INFORMATION

Back Plan - Surface Mount Option



Plan - WI or WD Wall Mount Option



Side View - Cable Mount Option

