

BSS440 | WAKE

4" wide aperture recessed LED luminaire

Project: _____ Type: _____



FEATURES

A member of the Wake series, the BSS440 is a recessed, extruded aluminum linear LED luminaire with 4" wide aperture. Single and continuous run fixtures are available for installation in common grid ceilings or in hard walls and ceilings with flange and trimless variants. Flush or 1" drop frosted acrylic lens options are offered for all mounting configurations.

SPECIFICATIONS

Fixture housing and trim elements made of extruded aluminum and 16 ga. sheet aluminum and steel parts

Model options available for typical 9/16" and 15/16" grid ceilings or hard walls/ceilings with flange and trimless mounting (wall installation requires accessory mounting brackets)

Basic continuous run fixtures provided with 18 ga. wiring harness for 6 Amp maximum load (consult factory for runs requiring multiple circuits, sensor integration, etc.)

Frosted acrylic lens options include a flush fit or 1" drop style with lensed ends

Standard integral 120-277V driver offered with 0-10V dimming or non-dim (other dimming driver options available)

Integral 120-277V emergency battery backup available for 44"-88" fixtures (supplied with remote test switch/indicator plate assembly)

Standard light outputs range from 465 – 905 lumens per foot

LEDs available in 2700K, 3000K, 3500K, and 4000K, within a 3 step MacAdam ellipse, all with 90+ CRI typical

Life: 50,000 hours L₇₀

Chicago plenum rated option available

Nominal weight is 3.4 lbs. per foot

Limited five year warranty

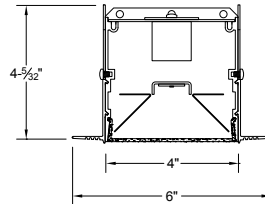
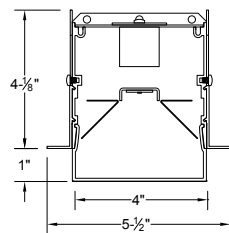
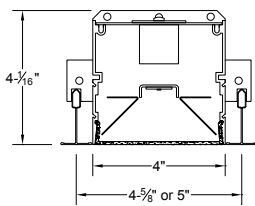
UL and C-UL listed for dry and damp locations

SECTIONS

T1: T-grid 9/16"
T2: T-grid 15/16"
(flush lens option shown)

FT: Flange
(drop lens option shown)

TL: Trimless
(flush lens option shown)



PERFORMANCE

| NOMINAL LENGTH | OPTIC CONFIGURATION | OUTPUT | LUMENS/ft. | WATTS/ft. | LUMINAIRE LUMENS | EFFICACY (LPW) |
|----------------|---------------------|------------|------------|-----------|------------------|----------------|
| 44" | FLUSH | L: low | 465 | 5.7 | 1733 | 82 |
| | | R: regular | 685 | 7.8 | 2550 | 77 |
| | | H: high | 795 | 10.9 | 2957 | 73 |
| | DROP | L: low | 530 | 5.7 | 1980 | 94 |
| | | R: regular | 690 | 7.8 | 2571 | 88 |
| | | H: high | 905 | 10.9 | 3378 | 83 |

Note: All data reflects fixtures with 3500K LEDs



BSS440 -

MOUNTING

T1: T-grid 9/16"
T2: T-grid 15/16"
FT: Flange trim
TL: Trimless
CF: consult factory for custom mounting

NOMINAL FIXTURE LENGTH**

22: 22" 55: 55"
24: 24" 61: 61"
33: 33" 66: 66"
39: 39" 72: 72"
44: 44" 77: 77"
48: 48" 83: 83"
50: 50" 88: 88"

CORRELATED COLOR TEMPERATURE

27: 2700K-90+ CRI
30: 3000K-90+ CRI
35: 3500K-90+ CRI
40: 4000K-90+ CRI

DRIVER

ND: non-dimming
[Dimming]
D: 0-10V, 1%
HES: Lutron EcoSystem, soft-on/fade-to-black, 1%
H2: Lutron Hi-lume 2-wire forward phase, 1%, (120V ONLY)
E5: Lutron EcoSystem 5-Series, 5%
EL: eldoLED ECOdrive 0-10V, 1%

LIGHT OUTPUT (lumens per foot w/drop lens)*

L: low - 530
R: regular - 690
H: high - 905
CF: consult factory for custom output

RUN CONFIGURATION

SN: single
ST: starter
AD: adder
TR: terminator

LENS

F1: frosted flush
F2: frosted drop

OPTIONS

CP: Chicago plenum
ED: emergency driver (44"-88" fixtures)
WS1: Wattstopper FS-205 ‡
ES1: EasySense SNS102 ‡
ES2: EasySense SNS200 ‡
ES3: EasySense SNS300 ‡
EN1: Enlighted FS-D22 ‡
CF: consult factory for custom finish

* Output for drop lens option. Consult performance table for all output options.

** Actual dimension dependent on mounting option and run configuration

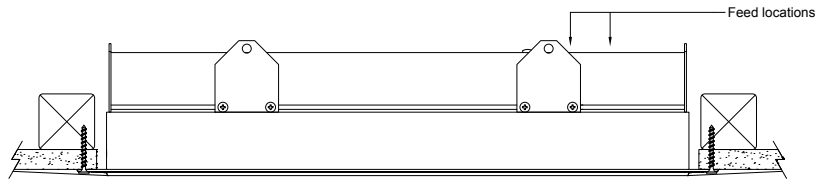
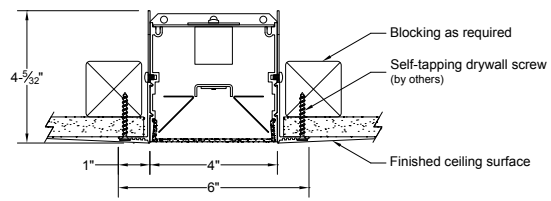
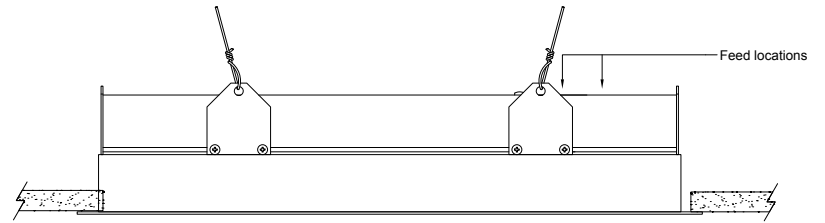
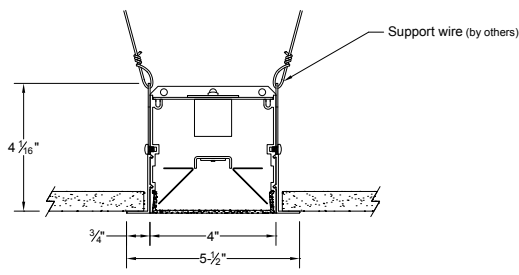
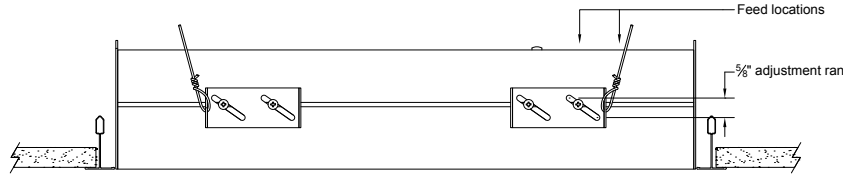
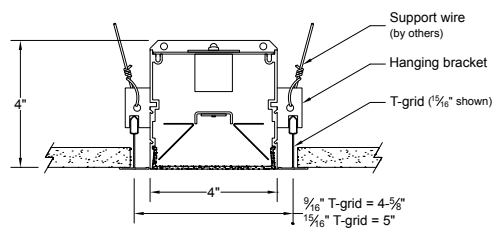
‡ See sensor section for driver compatibility information

BSS440 | WAKE

4" wide aperture recessed LED luminaire

MOUNTING


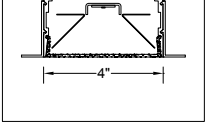

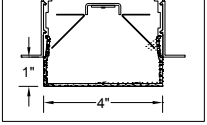
| ORDERING CODE | DESCRIPTION | SPECIFICATIONS |
|------------------|---|---|
| <p>T1 T2</p> | <p>T-grid ceiling 9/16" T-grid ceiling 15/16"</p> | <ul style="list-style-type: none"> • 16 ga. brackets locate housing onto T-bar and allow 5/8" of vertical adjustment to accommodate various height T-bar • Housing secured with support wires (by others) • Exposed flange trim in matte white finish |
| <p>FT</p> | <p>Flange- drywall ceiling or wall</p> | <ul style="list-style-type: none"> • For wall installations or special ceiling conditions, order accessory mounting brackets 430-WB • 3/4" wide extruded aluminum trim flange in matte white finish • Housing secured with support wires or 1/4-20 threaded rod (by others) |
| <p>TL</p> | <p>Trimless - drywall ceiling or wall</p> | <ul style="list-style-type: none"> • Installs after 1/2" or 5/8" drywall • Housing secured with self-tapping drywall screws (by others) into blocking as required |




BSS440 | WAKE

4" wide aperture recessed LED luminaire

LENS OPTIONS

| | ORDERING CODE | DESCRIPTION | SPECIFICATIONS | |
|---|---------------|--------------------|--|---|
|  | F1 | FROSTED FLUSH LENS | 4" W frosted acrylic extrusion |  |
|  | F2 | FROSTED DROP LENS | 4" W x 1" H frosted acrylic extrusion with matching acrylic end caps |  |


OPTIONS

| | ORDERING CODE | DESCRIPTION | SPECIFICATIONS |
|--|---------------|----------------------|--|
|  | ED | EMERGENCY LED DRIVER | <ul style="list-style-type: none"> • Universal 120-277V input voltage emergency driver delivers initial minimum power of 10W for 90 minutes • Available for 44-88" fixtures • Provided with combination test switch/indicator light mounted to wall plate for remote installation |

Note: remote battery backup available for shorter fixture lengths - ordered separately, consult factory for details

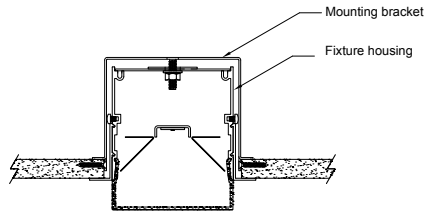
INTEGRATED SENSORS

Note: Overall fixture length remains the same as models without a sensor. Total illuminated length is reduced by 5" nominal. For F1 flush lens option, sensors are mounted to flush filler piece. For F2 drop lens option, sensors are mounted to 1" H sheet formed cover.

| | ORDERING CODE | BRAND AND MODEL | FUNCTIONS | |
|---|---------------|--------------------------|---|---|
|  | WS1 | Wattstopper FS-205 | Occupancy and light level sensor | For use with on/off or 0-10V dimming drivers only |
|  | EN1 | Enlighted FS-D22 | Occupancy, ambient light sensing, daylight harvesting, and environment monitoring for Enlighted control network | Provided with Advance sensor ready series 0-10V dimming drivers |
|  | ES1 | Philips EasySense SNS102 | Occupancy, daylight harvesting and task tuning sensor with simple grouping | Provided with Advance sensor ready series 0-10V dimming drivers |
| | ES2 | Philips EasySense SNS200 | Occupancy, daylight harvesting and task tuning sensor with advance grouping | Provided with Advance sensor ready series 0-10V dimming drivers |
| | ES3 | Philips EasySense SNS300 | Occupancy, daylight harvesting sensor for integration with Zigbee control networks | Provided with Advance sensor ready series 0-10V dimming drivers |

ACCESSORIES

Note: Accessories sold separately

| | ORDERING CODE | DESCRIPTION | SPECIFICATIONS |
|---|---------------|--------------------|---|
|  | 440-WB | WALL MOUNT BRACKET | <ul style="list-style-type: none"> • For use when mounting fixtures with flange or trimless options in walls or restricted ceiling conditions • 16 ga. bracket clamps fixture to the backside of the mounting surface with provided hardware • Sold individually; two required for 22-61" nom. fixtures, three required for 66-88" nom. fixtures |

FIXTURE LENGTHS

FOR T-GRID WITH STANDARD 24" AND 48" CENTERS ONLY
SINGLE (SN) CONFIGURATION ONLY

| ORDER CODE | HOUSING LENGTH 9/16" T-GRID | HOUSING LENGTH 15/16" T-GRID |
|------------|--------------------------------|---------------------------------|
| 24 | 23-1/4" | 22-7/8" |
| 48 | 47-1/4" | 46-7/8" |

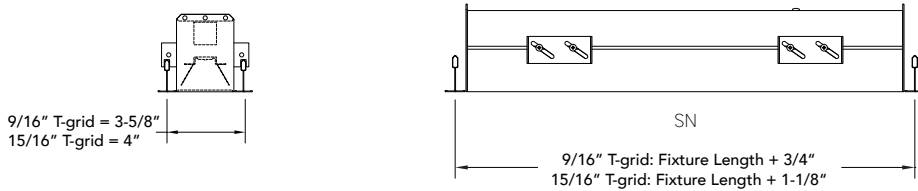
FOR T-GRID WITH CUSTOM CENTERS OR FLANGE AND TRIMLESS MOUNTING OPTIONS

SINGLE (SN), STARTER (ST), ADDER (AD), TERMINATOR (TR) CONFIGURATIONS

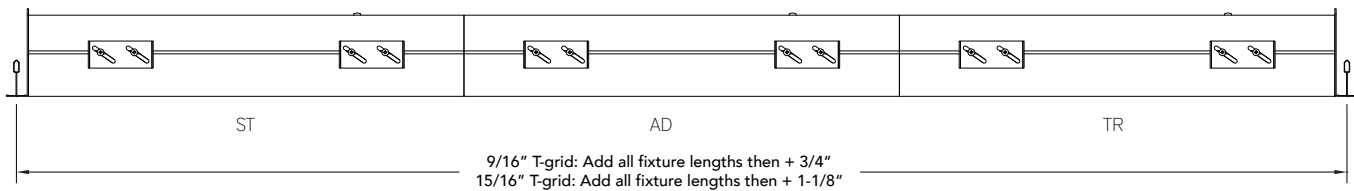
| ORDER CODE | HOUSING LENGTH | ORDER CODE | HOUSING LENGTH |
|------------|----------------|------------|----------------|
| 22 | 22-1/8" | 55 | 55-1/8" |
| 24 | 24-1/8" | 61 | 60-5/8" |
| 33 | 33-1/8" | 66 | 66-1/8" |
| 39 | 38-5/8" | 72 | 71-5/8" |
| 44 | 44-1/8" | 77 | 77-1/8" |
| 48 | 48-1/8" | 83 | 82-5/8" |
| 50 | 49-5/8" | 88 | 88-1/8" |

TO DETERMINE CUSTOM GRID CENTERS FOR T-GRID CEILING MOUNTING

Single Fixtures

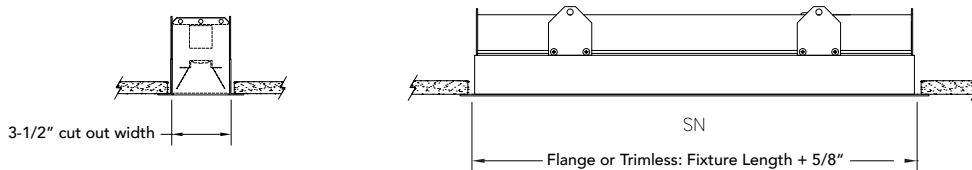


Continuous Runs



TO DETERMINE WALL / CEILING CUT OUT FOR FLANGE TRIM AND TRIMLESS MOUNTING

Single Fixtures



Continuous Runs

