

Project: \_\_\_\_\_ Type: \_\_\_\_\_



Shown with flange trim and drop lens options

## FEATURES

A member of the Wake series, the BSS430 is a recessed, extruded aluminum linear LED luminaire with 3" wide aperture. Single and continuous run fixtures are available for installation in common grid ceilings or in hard walls and ceilings with flange and trimless variants. Flush or 1" drop frosted acrylic lens options are offered for all mounting configurations.

## SPECIFICATIONS

Fixture housing and trim elements made of extruded aluminum and 16 ga. sheet aluminum and steel parts

Model options available for typical 9/16" and 15/16" grid ceilings or hard walls/ceilings with flange and trimless mounting (wall installation requires accessory mounting brackets)

Basic continuous run fixtures provided with 18 ga. wiring harness for 6 Amp maximum load (consult factory for runs requiring multiple circuits, sensor integration, etc.)

Frosted acrylic lens options include a flush fit or 1" drop style with lensed ends

Standard integral 120-277V driver offered with 0-10V dimming or non-dim (other dimming driver options available)

Integral 120-277V emergency battery backup available for 44"-88" fixtures (supplied with remote test switch/indicator plate assembly)

Standard light outputs range from 480 – 940 lumens per foot

LEDs available in 2700K, 3000K, 3500K, and 4000K, within a 3 step MacAdam ellipse, all with 90+ CRI typical

Life: 50,000 hours L<sub>70</sub>

Chicago plenum rated option available

Nominal weight is 3.1 lbs. per foot

Limited five year warranty

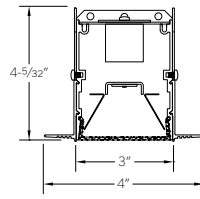
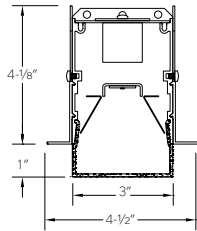
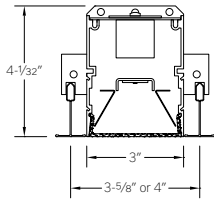
UL and C-UL listed for dry and damp locations

## SECTIONS

T1: T-grid 9/16"  
T2: T-grid 15/16"  
(flush lens option shown)

FT: Flange  
(drop lens option shown)

TL: Trimless  
(flush lens option shown)



## PERFORMANCE

Note: All data reflects fixtures with 3500K LEDs

NOMINAL LENGTH	LENS	OUTPUT	LUMENS/ft.	WATTS/ft.	LUMINAIRE LUMENS	EFFICACY (LPW)
45"	FLUSH	L: low	480	5.7	1793	85
		R: regular	625	7.8	2329	80
		H: high	820	10.9	3060	76
	DROP	L: low	550	5.7	2048	97
		R: regular	715	7.8	2660	91
		H: high	940	10.9	3495	86

## BSS430 –

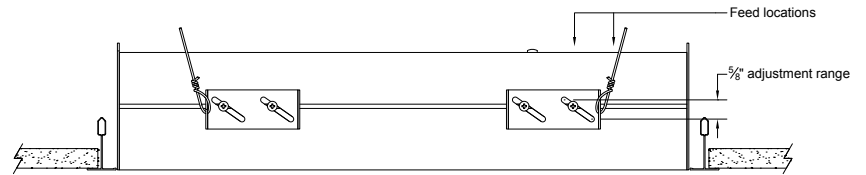
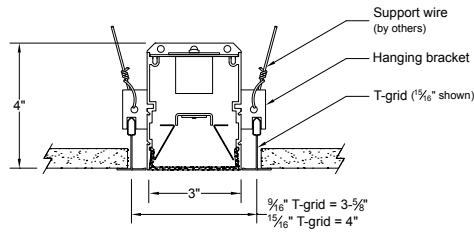
MOUNTING OPTION	NOMINAL APERTURE LENGTH*	CORRELATED COLOR TEMPERATURE	DRIVER	LIGHT OUTPUT (lumens per foot w/lens option F2)	RUN CONFIGURATION	OPTIONS
T1: T-grid 9/16" T2: T-grid 15/16" FT: Flange trim TL: Trimless CF: consult factory for custom mounting	22: 22" 24: 24" 33: 33" 39: 39" 44: 44" 48: 48" 50: 50" 55: 55" 61: 61" 66: 66"	27: 2700K-90+ CRI 30: 3000K-90+ CRI 35: 3500K-90+ CRI 40: 4000K-90+ CRI	ND: non-dimming <b>[Dimming]</b> DM: 0-10V, 1% HES: Lutron EcoSystem, soft-on fade-to-black, 1% H2: Lutron Hi-lume 2-wire forward phase, 1%, (120V ONLY) EL: eldoLED ECOdrive 0-10V, 1% ES: eldoLED SOLOdrive 0-10V, 0.1% ELD: eldoLED ECOdrive DALI, 1% ESD: eldoLED SOLOdrive DALI, 0.1%	L: low – 550 R: regular – 715 H: high – 940 CF: consult factory for custom output	SN: single ST: starter AD: adder TR: terminator	CP: Chicago plenum ED: emergency driver (44"-88" fixtures) WS1A: Wattstopper FS-205, 100%-0% ‡ WS1B: Wattstopper FS-205, 100%-50% ‡ EN1: Enlighted FS-D22 ‡ ES1A: EasySense SNS102, 100%-0% ‡ ES1B: EasySense SNS102, 100%-50% ‡ ES2A: EasySense SNS200, 100%-0% ‡ ES2B: EasySense SNS200, 100%-50% ‡ CF: consult factory for custom finish options
					<b>LENS</b> F1: frosted flush F2: frosted drop	



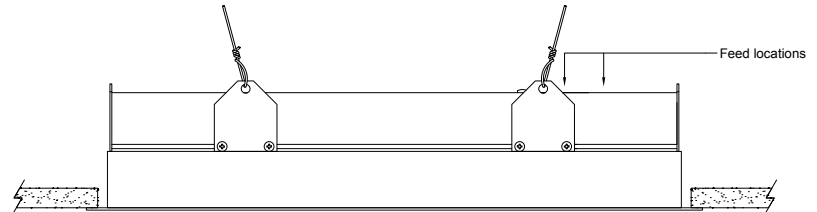
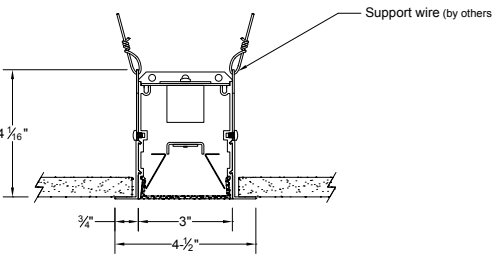
\* Actual dimension dependent on mounting option and run configuration  
‡ See sensor section for driver compatibility information

MOUNTING

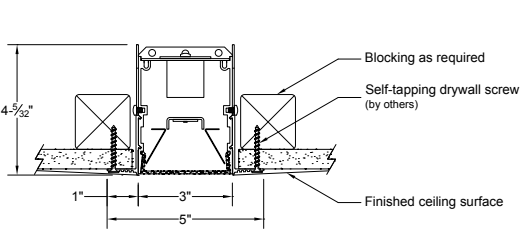
ORDERING CODE	DESCRIPTION	SPECIFICATIONS
T1 T2	T-grid ceiling 9/16" T-grid ceiling 15/16"	<ul style="list-style-type: none"> <li>• 16 ga. brackets locate housing onto T-bar and allow 5/8" of vertical adjustment to accommodate various height T-bar</li> <li>• Housing secured with support wires (by others)</li> <li>• Exposed flange trim in matte white finish</li> </ul>




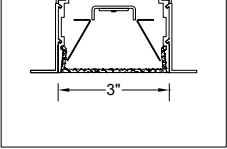

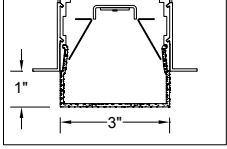
FT	Flange - drywall ceiling or wall	<ul style="list-style-type: none"> <li>• <b>For wall installations or special ceiling conditions, order accessory mounting brackets 430-WB</b></li> <li>• 3/4" wide extruded aluminum trim flange in matte white finish</li> <li>• Housing secured with support wires or 1/4-20 threaded rod (by others)</li> </ul>
----	----------------------------------	---



TL	Trimless - drywall ceiling or wall	<ul style="list-style-type: none"> <li>• Installs after 1/2" or 5/8" drywall</li> <li>• Housing secured with self-tapping drywall screws (by others) into blocking as required</li> </ul>
----	------------------------------------	---



## LENS OPTIONS

	ORDERING CODE	DESCRIPTION	SPECIFICATIONS	
	F1	FROSTED FLUSH LENS	3" W frosted acrylic extrusion	
	F2	FROSTED DROP LENS	3" W x 1" H frosted acrylic extrusion with matching acrylic end caps	

## OPTIONS

	ORDERING CODE	DESCRIPTION	SPECIFICATIONS
	ED	EMERGENCY LED DRIVER	<ul style="list-style-type: none"> <li>• Universal 120-277V input voltage emergency driver of 10W for 90 minutes</li> <li>• Available for 44-88" fixtures</li> <li>• Provided with combination test switch/indicator light mounted to wall plate for remote installation</li> </ul>




Note: remote battery backup available for shorter fixture lengths - ordered separately, consult factory for details

# BSS430 | wake

3" wide aperture recessed LED luminaire

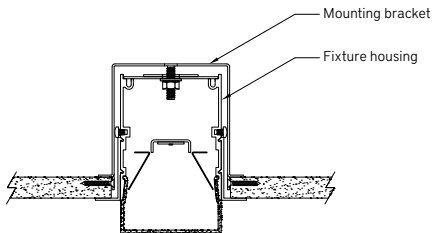
## INTEGRATED SENSORS

Note: Overall fixture length remains the same as models without a sensor. Total illuminated length is reduced by 5" nominal.  
 For F1 flush lens option, sensors are mounted to flush filler piece. For F2 drop lens option, sensors are mounted to 1" H sheet formed cover.  
 Consult factory for custom light output setting.

	ORDERING CODE	LIGHT OUTPUT SETTING	BRAND AND MODEL	FUNCTIONS	NOTES
	WS1A	100% – 0%	Wattstopper FS-205	Occupancy and light level sensor	For use with on/off or 0-10V dimming drivers only
	WS1B	100% – 50%			
	EN1	Set during commissioning	Enlighted FS-D22	Occupancy, ambient light sensing, daylight harvesting, and environment monitoring for Enlighted control network	Provided with Advance sensor ready series 0-10V dimming drivers
	ES1A	100% – 0%	Philips EasySense SNS102	Occupancy, daylight harvesting and task tuning sensor with simple grouping	Provided with Advance sensor ready series 0-10V dimming drivers
	ES1B	100% – 50%			
	ES2A	100% – 0%	Philips EasySense SNS200	Occupancy, daylight harvesting and task tuning sensor with advance grouping	Provided with Advance sensor ready series 0-10V dimming drivers
	ES2B	100% – 50%			

## ACCESSORIES

Note: Accessories sold separately

	ORDERING CODE	DESCRIPTION	SPECIFICATIONS
	430-WB	WALL MOUNT BRACKET	<ul style="list-style-type: none"> <li>For use when mounting fixtures with flange or trimless options in walls or restricted ceiling conditions</li> <li>16 ga. bracket clamps fixture to the backside of the mounting surface with provided hardware</li> <li>Sold individually; <b>two</b> required for 22-61" nom. fixtures, <b>three</b> required for 66-88" nom. fixtures</li> </ul>

## FIXTURE LENGTHS

FOR T-GRID WITH STANDARD 24" AND 48" CENTERS ONLY  
SINGLE (SN) CONFIGURATION ONLY

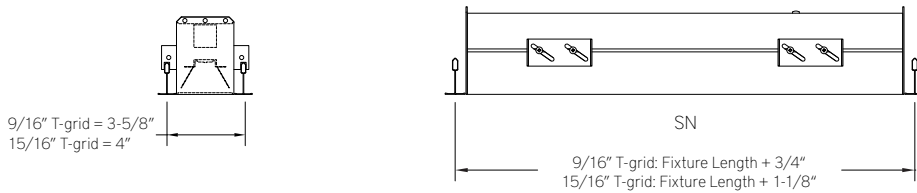
ORDER CODE	HOUSING LENGTH 9/16" T-GRID	HOUSING LENGTH 15/16" T-GRID
24	23-1/4"	22-7/8"
48	47-1/4"	46-7/8"

FOR T-GRID WITH CUSTOM CENTERS OR FLANGE AND TRIMLESS MOUNTING OPTIONS  
SINGLE (SN), STARTER (ST), ADDER (AD), TERMINATOR (TR) CONFIGURATIONS

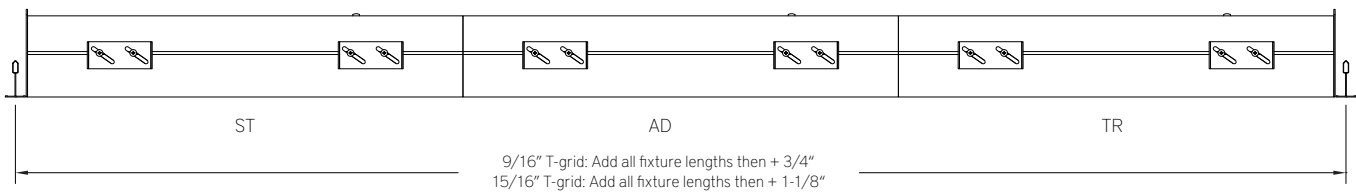
ORDER CODE	HOUSING LENGTH	ORDER CODE	HOUSING LENGTH
22	22-1/8"	55	55-1/8"
24	24-1/8"	61	60-5/8"
33	33-1/8"	66	66-1/8"
39	38-5/8"	72	71-5/8"
44	44-1/8"	77	77-1/8"
48	48-1/8"	83	82-5/8"
50	49-5/8"	88	88-1/8"

## TO DETERMINE CUSTOM GRID CENTERS FOR T-GRID CEILING MOUNTING

### Single Fixtures

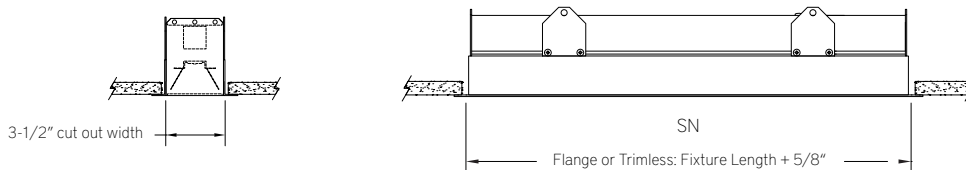


### Continuous Runs



## TO DETERMINE WALL / CEILING CUT OUT FOR FLANGE TRIM AND TRIMLESS MOUNTING

### Single Fixtures



### Continuous Runs

