

# BSS430 | wake

3" wide aperture recessed LED luminaire

Project: \_\_\_\_\_ Type: \_\_\_\_\_



Highlighted fields denote QuickShip Options. See complete 7-Day QuickShip Terms and Conditions available at [www.bartcolighting.com/quickship-products/](http://www.bartcolighting.com/quickship-products/). Purchase order must reference "QuickShip".

## FEATURES

A member of the Wake series, the BSS430 is a recessed, extruded aluminum linear LED luminaire with 3" wide aperture. Single and continuous run fixtures are available for installation in common grid ceilings or in hard walls and ceilings with flange and trimless variants. Flush or 1" drop frosted acrylic lens options are offered for all mounting configurations. The BSS430 is Controls Capable, being offered with a variety of integrated control options.

Fixture with certain options available for 7-Day QuickShip.

## SPECIFICATIONS

Fixture housing and trim elements made of extruded aluminum and 16 ga. sheet aluminum and steel parts.

Model options available for typical 9/16" and 15/16" grid ceilings or hard walls/ceilings with flange and trimless mounting (wall installation requires accessory mounting brackets).

Basic continuous run fixtures provided with 18 ga. wiring harness for 6 Amp maximum load (consult factory for runs requiring multiple circuits, sensor integration, etc.).

Optic options include an acrylic frosted flush or 1" drop lens and flat blade louver.

Standard integral 120-277V driver offered with 0-10V dimming or non-dim (other dimming driver options available).

Integral 120-277V emergency battery backup available for 44"-88" fixtures (supplied with remote test switch/indicator).

Standard light outputs range from 480 – 940 lumens per foot.

LEDs available in 2700K, 3000K, 3500K, and 4000K, within a 3 step MacAdam ellipse, all with 90+ CRI typical.

Life: 50,000 hours L<sub>70</sub>.

Bartco Lighting Controls Capable fixture available with integrated controls from a variety of suppliers.

Chicago plenum rated option available.

Nominal weight is 3.1 lbs. per foot.

Limited five year warranty.

UL and C-UL listed for dry and damp locations.

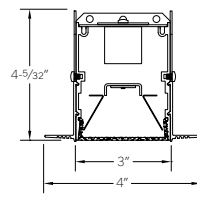
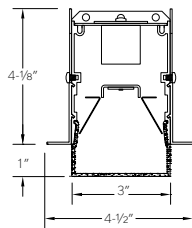
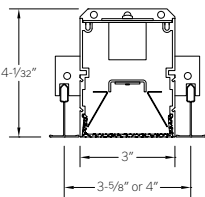


## SECTIONS

T1: T-grid 9/16"  
T2: T-grid 15/16"  
(flush lens option shown)

FT: Flange  
(drop lens option shown)

TL: Trimless  
(flush lens option shown)



## PERFORMANCE

Note: All data reflects fixtures with 3500K LEDs

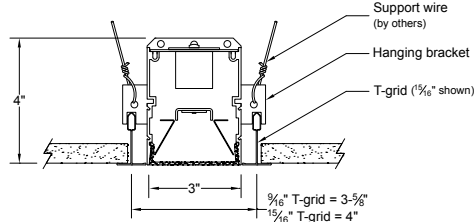
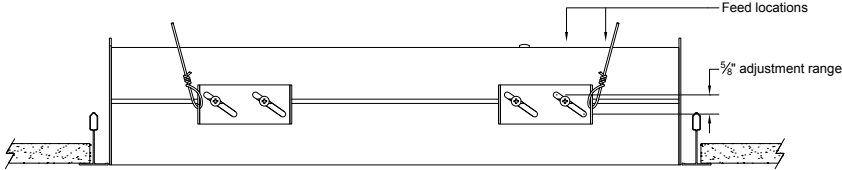
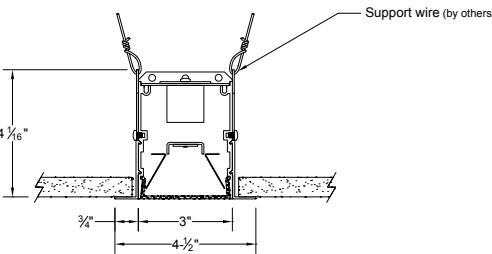
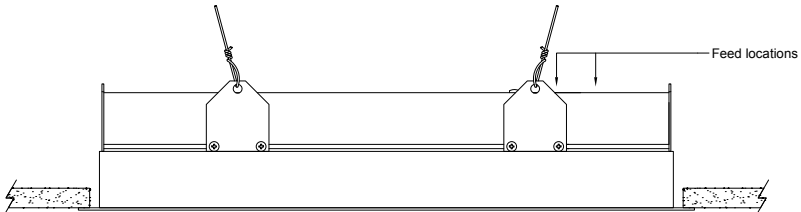
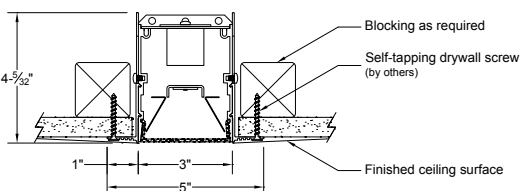
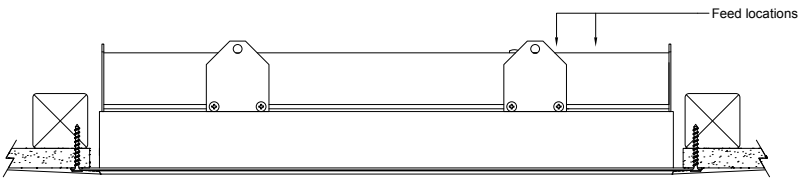
NOMINAL LENGTH	OPTIC OPTION	OUTPUT	LUMENS/ft.	WATTS/ft.	LUMINAIRE LUMENS	EFFICACY (LPW)
45"	FLUSH	L: low	480	5.7	1793	85
		R: regular	625	7.8	2329	80
		H: high	820	10.9	3060	76
	DROP	L: low	550	5.7	2048	97
		R: regular	715	7.8	2660	91
		H: high	940	10.9	3495	86

## BSS430 -



MOUNTING OPTION	NOMINAL APERTURE LENGTH*	CORRELATED COLOR TEMPERATURE	DRIVER	LIGHT OUTPUT (lumens per foot w/lens option F1)	RUN CONFIGURATION	OPTIONS
T1: T-grid 9/16" T2: T-grid 15/16" FT: Flange trim TL: Trimless CF: consult factory for custom mounting	22: 22" 55: 55" 24: 24" 61: 61" 33: 33" 66: 66" 39: 39" 72: 72" 44: 44" 77: 77" 48: 48" 83: 83" 50: 50" 88: 88"	27: 2700K-90+ CRI 30: 3000K-90+ CRI 35: 3500K-90+ CRI 40: 4000K-90+ CRI	ND: non-dimming <b>[Dimming]</b> D: 0-10V, 1% DTR: triac, 1%, (120V ONLY) DLV: electronic low voltage, 1%, (120V ONLY) HES: Lutron EcoSystem, soft-on/fade-to-black, 1% EL: eldoLED ECOdrive 0-10V, 1% ES: eldoLED SOLOdrive 0-10V, 0.1% ELD: eldoLED ECOdrive DALI, 1% ESD: eldoLED SOLOdrive DALI, 0.1%	L: low – 480 R: regular – 625 H: high – 820 CF: consult factory for custom output	SN: single ST: starter AD: adder TR: terminator	CP: Chicago plenum ED: emergency driver (44"-88" fixtures) WS1A: Wattstopper FS-205, 100%-0% ‡ WS1B: Wattstopper FS-205, 100%-50% ‡ EN1: Enlighted FS-D22 ‡ ES4: Philips EasySense SNS211 MC ‡ CA1: Casambi CBU-A2D ‡ NL1: nLight RES7 ‡ NL2: nLight RIO ‡ LA1: Lutron Athena A-WN-D01-RF-WH ‡ LA2: Lutron Athena A-WN-D01-OCC-WH ‡ CF: consult factory for custom finish options
					<b>OPTIC</b> F1: frosted flush F2: frosted drop L: louver	

\* Actual dimension dependent on mounting option and run configuration.  
‡ See Integrated Controls section for driver compatibility information.


MOUNTING

ORDERING CODE	DESCRIPTION	SPECIFICATIONS
<p>T1 T2</p>	<p>T-grid ceiling 9/16" T-grid ceiling 15/16"</p>	<ul style="list-style-type: none"> <li>• 16 ga. brackets locate housing onto T-bar and allow 5/8" of vertical adjustment to accommodate various height T-bar.</li> <li>• Housing secured with support wires (by others).</li> <li>• Exposed flange trim in matte white finish.</li> </ul>
		
<p>FT</p>	<p>Flange - drywall ceiling or wall</p>	<ul style="list-style-type: none"> <li>• <b>For wall installations or special ceiling conditions, order accessory mounting brackets 430-WB.</b></li> <li>• 3/4" wide extruded aluminum trim flange in matte white finish.</li> <li>• Housing secured with support wires or 1/4-20 threaded rod (by others).</li> </ul>
		
<p>TL</p>	<p>Trimless - drywall ceiling or wall</p>	<ul style="list-style-type: none"> <li>• Installs after 1/2" or 5/8" drywall.</li> <li>• Housing secured with self-tapping drywall screws (by others) into blocking as required.</li> </ul>
		

OPTIC

ORDERING CODE	DESCRIPTION	SPECIFICATIONS
 <small>shown with flange trim option</small>	F1 FROSTED FLUSH LENS	3" W frosted acrylic extrusion
 <small>shown with flange trim option</small>	F2 FROSTED DROP LENS	3" W x 1" H frosted acrylic extrusion with matching acrylic end caps
L	LOUVER	<p>3" W Flat blade louver with 5/8" blades at 7/8" spacing, formed from sheet steel.</p> <p>Finish is Environmental Satin Silver (consult factory for alternate finishes).</p> <p>Supplied with light diffusion film.</p>


OPTIONS

ORDERING CODE	DESCRIPTION	SPECIFICATIONS
 <small>Note: remote battery backup available for shorter fixture lengths - ordered separately, consult factory for details.</small>	ED EMERGENCY LED DRIVER	<ul style="list-style-type: none"> <li>• Universal 120-277V input voltage emergency driver delivers initial minimum power of 10W for 90 minutes.</li> <li>• Available for 44"-88" fixtures.</li> <li>• Provided with combination test switch/indicator light for remote mount installation.</li> </ul>

OPTIONS - INTEGRATED CONTROLS

Note: Control options takes up 4" of the overall lens length. For "F1" and "L" optic option, controls are mounted to flush filler piece. For "F2" optic option, controls are mounted to 1" H sheet formed cover.



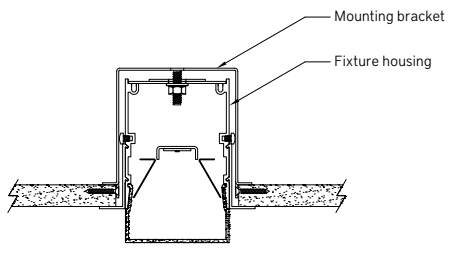
	ORDERING CODE	LIGHT OUTPUT SETTING	MODEL	CONTROL PROTOCOL	FUNCTIONS	COMPATIBLE DRIVERS
 <b>legrand</b> WATTSTOPPER®	WS1A	100% – 0% <sup>1</sup>	FS-205	N/A	PIR occupancy and light level sensor.	For use with on/off or 0-10V dimming drivers only.
	WS1B	100% – 50% <sup>1</sup>				
 <b>Enlighted</b>	EN1	Set during commissioning	FS-D22	Bluetooth Wireless	PIR occupancy, ambient light sensing, daylight harvesting, and environment monitoring for use within an Enlighted control network.	Provided with Advance sensor ready series 0-10V dimming drivers.
 <b>PHILIPS</b> EasySense	ES4	Set during commissioning	SNS211 MC	Bluetooth Wireless	Occupancy, daylight harvesting and task tuning sensor with advance grouping, for use within a MasterConnect network.	Provided with Advance sensor ready series 0-10V dimming drivers.
 <b>CASAMBI</b>	CA1	Set during commissioning	CBU-A2D	Bluetooth Wireless	0-10V/DALI driver controller, for use within a Casambi ecosystem.	For use with 0-10V or DALI drivers. Consult factory for details.
 <b>nLIGHT</b>	NL1	Set during commissioning	RES7 <sup>2</sup>	Radio Wireless	Dimming, PIR occupancy detection and daylight harvesting, for use within an nLight AIR network.	Provided with Advance sensor ready series or eldoLED 0-10V drivers.
	NL2		RIO <sup>2</sup>		Dimming, for use within an nLight AIR network.	
 <b>LUTRON</b>	LA1	Set during commissioning	A-WN-D01-RF-WH	Radio Wireless	Dimming only for use with an Athena control system.	Provided with Advance sensor ready series or eldoLED 0-10V or eldoLED DALI-2 drivers.
	LA2		A-WN-D01-OCC-WH		Dimming, PIR occupancy and daylight sensor for use with an Athena control system.	

1. Consult factory for custom light output setting.

2. Consult your Acuity representative for application-specific model number.

ACCESSORIES

Note: Accessories sold separately

	ORDERING CODE	DESCRIPTION	SPECIFICATIONS
	430-WB	WALL MOUNT BRACKET	<ul style="list-style-type: none"> <li>• For use when mounting fixtures with flange or trimless options in walls or restricted ceiling conditions.</li> <li>• 16 ga. bracket clamps fixture to the backside of the mounting surface with provided hardware.</li> <li>• Sold individually; <b>two</b> required for 22"–61" nom. fixtures, <b>three</b> required for 66"–88" nom. fixtures.</li> </ul>

## FIXTURE LENGTHS

FOR T-GRID WITH STANDARD 24" AND 48" CENTERS ONLY  
SINGLE (SN) CONFIGURATION ONLY

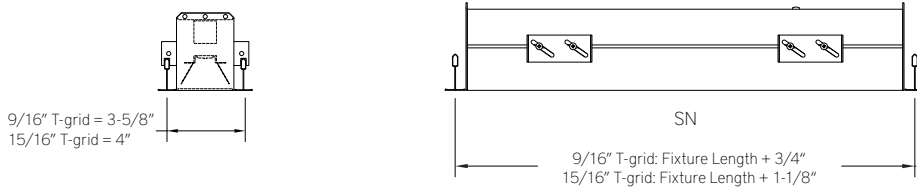
ORDER CODE	HOUSING LENGTH 9/16" T-GRID	HOUSING LENGTH 15/16" T-GRID
24	23-1/4"	22-7/8"
48	47-1/4"	46-7/8"

FOR T-GRID WITH CUSTOM CENTERS OR FLANGE AND TRIMLESS MOUNTING OPTIONS  
SINGLE (SN), STARTER (ST), ADDER (AD), TERMINATOR (TR) CONFIGURATIONS

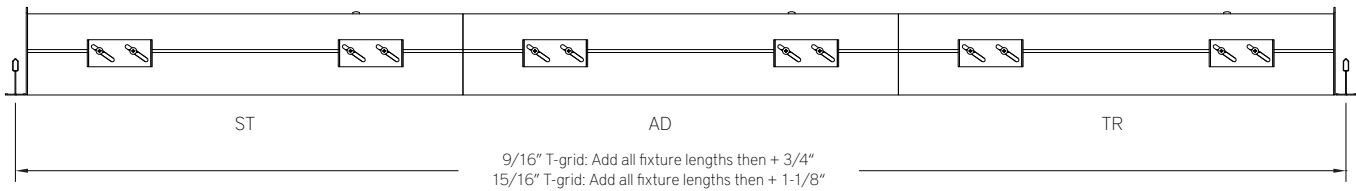
ORDER CODE	HOUSING LENGTH	ORDER CODE	HOUSING LENGTH
22	22-1/8"	55	55-1/8"
24	24-1/8"	61	60-5/8"
33	33-1/8"	66	66-1/8"
39	38-5/8"	72	71-5/8"
44	44-1/8"	77	77-1/8"
48	48-1/8"	83	82-5/8"
50	49-5/8"	88	88-1/8"

### TO DETERMINE CUSTOM GRID CENTERS FOR T-GRID CEILING MOUNTING

#### Single Fixtures

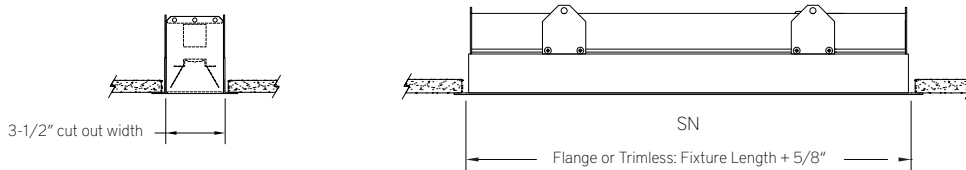


#### Continuous Runs



### TO DETERMINE WALL / CEILING CUT OUT FOR FLANGE TRIM AND TRIMLESS MOUNTING

#### Single Fixtures



#### Continuous Runs

