

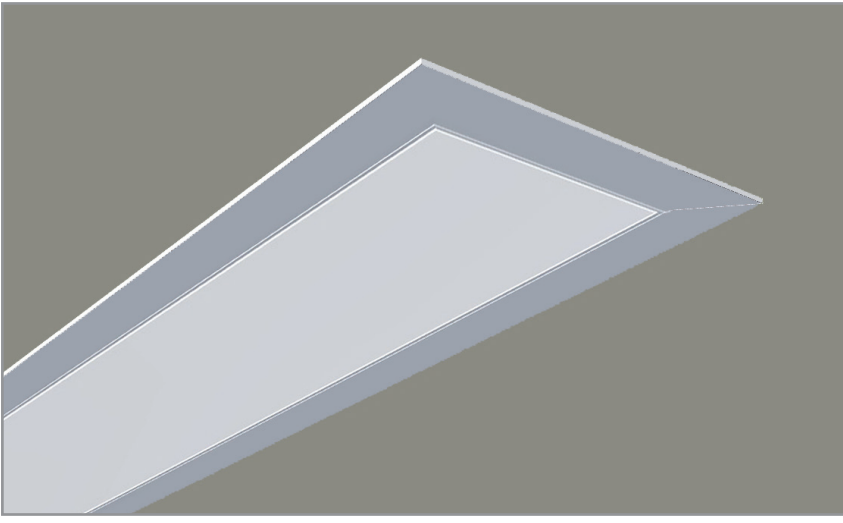
PRELIMINARY

BSS430 | GENERAL INFORMATION



3" wide aperture linear recessed LED fixture

Project: _____ Type: _____



FEATURES

A member of the Wake series, the BSS430 is a versatile, recessed linear LED luminaire with 3" wide aperture. Single and continuous run fixtures are available for installation in common grid ceilings or in hard walls and ceilings with flange and trimless variants. Flush or 1" drop frosted acrylic lens options are offered for all mounting configurations.

SPECIFICATIONS

Fixture housing and trim elements made of extruded aluminum and 16 ga. sheet aluminum and steel parts

Suitable for installation in typical 9/16" and 15/16" grid ceilings for standard 24" and 48" spacing, as well as nominal 22"-88" single and continuous fixture models

Flange and trimless mounting options available for installation of single or continuous run 22"-88" nominal length fixtures into drywall ceilings and walls (wall installation requires accessory mounting brackets)

Continuous run fixtures provided with quick connects for simple, efficient wiring

Standard finish is matte white powder coat (consult factory for custom finishes)

Frosted acrylic lens options include flush fit and 1" drop

Reflector formed from a white metal composite with ≥ 96 total reflectance value

Standard integral 120-277V driver offered with 0-10V dimming or non-dim (other dimming driver options available)

Emergency battery backup available for 44"-88" length fixtures (consult factory for details, supplied with remote test switch indicator plate assembly)

Standard outputs are 5W and 8W nominal per foot

LEDs available in 3000K, 3500K, 4000K, 5000K, all with a typical 84-85 CRI and color consistency within a 3 step MacAdam ellipse

Lamp life rated at 50,000 hours

Chicago plenum rated option available

Nominal weight is xx lbs. per foot

Limited five year warranty

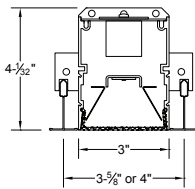
UL and C-UL listed for dry and damp locations and I.C. rated

IBEW manufactured and assembled

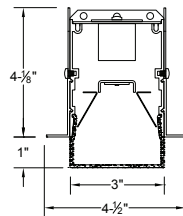
Made in U.S.A.

SECTIONS

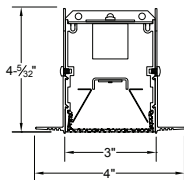
T1: T-grid 9/16"
T2: T-grid 15/16"
(flush lens option shown)



FT: Flange
(drop lens option shown)



TL: Trimless
(flush lens option shown)



BSS430 +

MOUNTING	NOMINAL FIXTURE LENGTH**	COLOR TEMPERATURE	DRIVER	WATTS/FOOT	RUN CONFIGURATION	OPTIONS
T1: T-grid 9/16" T2: T-grid 15/16" FT: Flange trim TL: Trimless CF: consult factory for custom mounting	22: 22" nom. 24: 24" nom. (T1 or T2 w/SN ONLY) 33: 33" nom. 39: 39" nom. 44: 44" nom. 48: 48" nom. (T1 or T2 w/SN ONLY) 50: 50" nom. 55: 55" nom.	30: 3000K - 84 CRI 35: 3500K - 85 CRI 40: 4000K - 85 CRI 50: 5000K - 85 CRI 61: 61" nom. 66: 66" nom. 72: 72" nom. 77: 77" nom. 83: 83" nom. 88: 88" nom.	[Non-Dimming] leave blank for non-dimming [Dimming] DM: 0-10V, 1% HE: Lutron EcoSystem, 1% HES: Lutron EcoSystem, soft-on/fade-to-black, 1% H2: Lutron Hi-lume 2-wire forward phase, 1%, (120V ONLY) H3: Lutron Hi-lume, 3-wire, 1% EL: EldoLED 0-10V, Dim to Dark, 0%	5: 5W/ft. 8: 8W/ft. CF: consult factory for custom wattage	SN: single ST: starter AD: adder TR: terminator	CP: Chicago plenum E1: emergency driver 120V (44" -88" fixtures) E2: emergency driver 277V (44" -88" fixtures) CF: consult factory for custom finish
					F1: frosted flush F2: frosted drop	

** Actual dimension dependent on mounting option and run configuration

PRELIMINARY

BSS430 | GENERAL INFORMATION



MOUNTING

ORDERING CODE

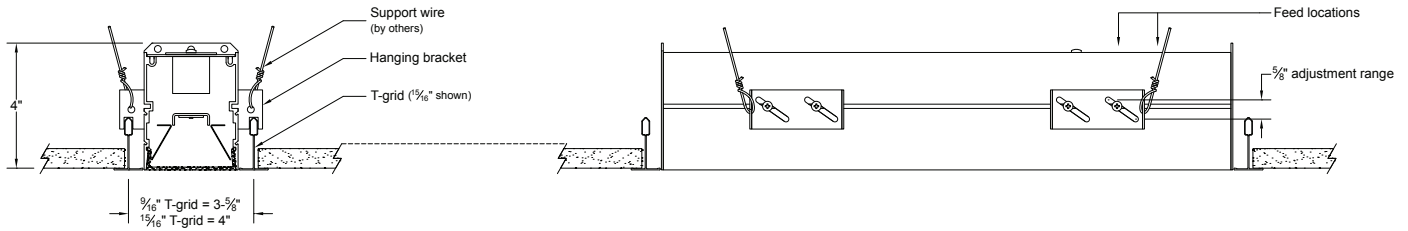
DESCRIPTION

SPECIFICATIONS

T1
T2

T-grid ceiling 9/16"
T-grid ceiling 15/16"

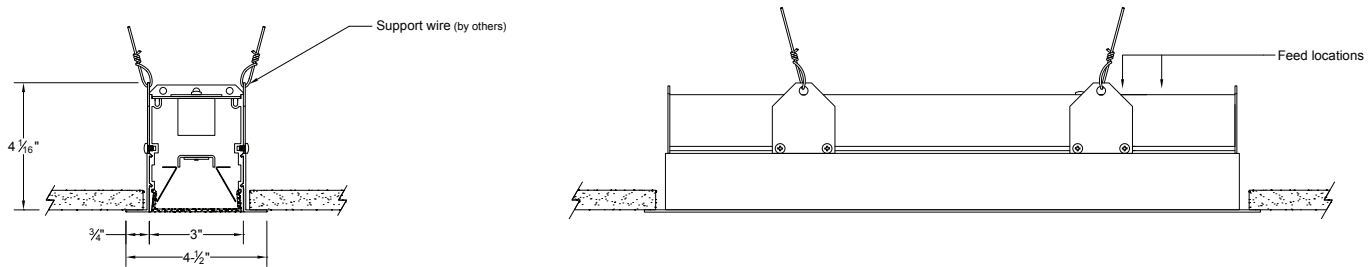
- 16 ga. brackets locate housing onto T-bar and allow 5/8" of vertical adjustment to accommodate various height T-bar
- Housing secured with support wires (by others)



FT

Flange - drywall ceiling
or wall

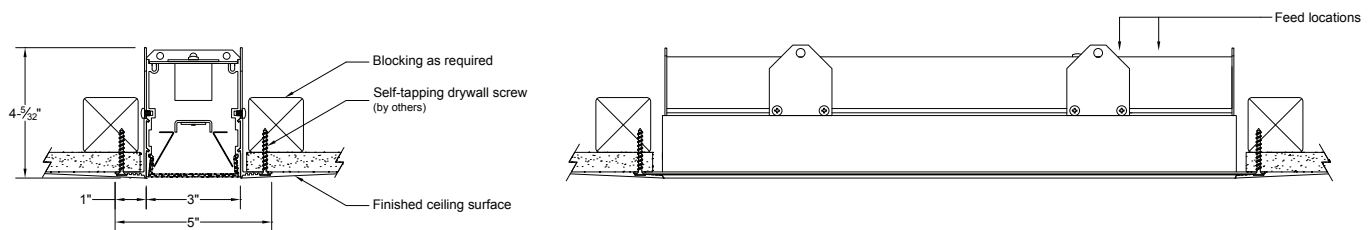
- 3/4" wide extruded aluminum trim flange in standard matte white finish
- Housing secured with support wires or 1/4-20 threaded rod (by others)
- For wall installations or special ceiling conditions, order accessory mounting brackets



TL

Trimless - drywall ceiling
or wall

- Installs after 1/2" or 5/8" drywall
- Housing secured with self-tapping drywall screws (by others) into blocking as required

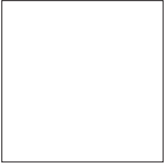
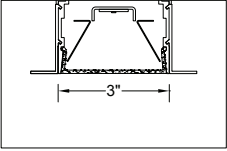

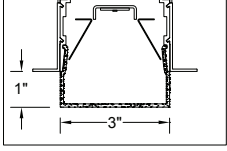


PRELIMINARY

BSS430 | GENERAL INFORMATION

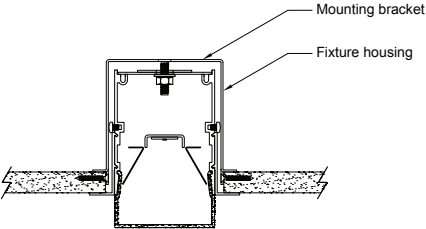


LENS OPTIONS

	ORDERING CODE	DESCRIPTION	SPECIFICATIONS	
	F1	FROSTED FLUSH LENS	3" W frosted acrylic extrusion	
	F2	FROSTED DROP LENS	3" W x 1" H frosted acrylic extrusion	

ACCESSORIES

Note: Accessories sold separately

	ORDERING CODE	DESCRIPTION	SPECIFICATIONS
	430-WB	WALL MOUNT BRACKET	<ul style="list-style-type: none"> • For use when mounting fixtures with flange or trimless options in walls or restricted ceiling conditions • 16 ga. bracket clamps fixture to the backside of the mounting surface with provided hardware • Sold individually; two required for 22"- 61" nom. fixtures, three required for 66"-88" nom. fixtures