

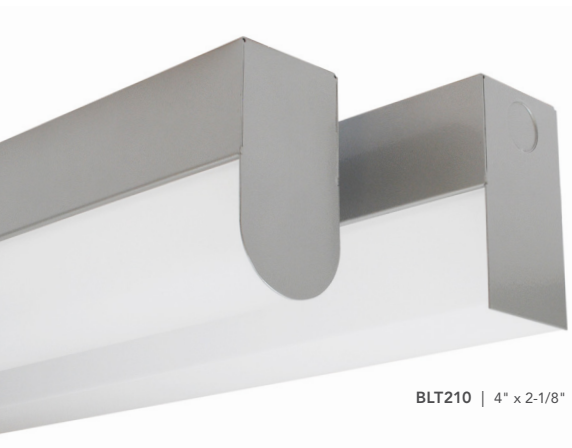
bartco  
VISIONS BROUGHT TO LIGHT™



**BLT**

# BLT

With profiles similar to our Bodhi series, the BLT luminaires are constructed of formed and welded steel, making them one of the most cost-effective linear solutions in the market.



**BLT210** | 4" x 2-1/8"

## QUICKSHIP

All three models have options available for QuickShip.

## PROFILE SHAPES

Choose between rounded and rectangular profile options for BLT205 and BLT210.

## MOUNTING OPTIONS

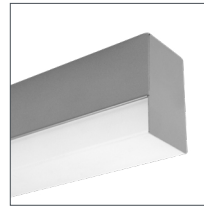
All three fixtures are available as surface, wall (direct or indirect) and cable mount.

## INTEGRATED CONTROL OPTIONS

Optional sensors and controls are available (rectangular profiles only).

## KNOCK OUTS

Optional end knock outs are available for surface and suspended models to create continuous runs.



**BLT205** | 3" x 1-25/32"



**BLT215** | 4" x 3-1/8"

