

BLT205 | BLT

1-25/32" wide sheet steel LED luminaire with drop lens

Project: _____ Type: _____



FEATURES

The BLT205 luminaire provides high performance with high value. The heavy gauge, sheet formed 1-25/32" wide steel housing is offered with rectangular or rounded profile frosted acrylic lenses and 90+ CRI LEDs. Multiple driver, light output and mounting options enable this basic linear fixture to provide great versatility in applications. **Fixture with certain options available for 3-Day QuickShip.**

SPECIFICATIONS

Housing is formed and welded, 20 ga. steel, chemically treated to resist corrosion and enhance paint adhesion

Model variations offered in rectangular or rounded profiles for surface, wall mount and cable suspended applications

Standard finishes as shown below

Available as single fixtures in nominal lengths of 2'-8'

Surface mount models include knock outs on the rear and surface or suspended models are available with optional end knock outs.

Standard integral 120-277V driver offered with 0-10V dimming or non-dim (other dimming driver options available)

Integral 120-277V emergency battery backup available for 4' nominal non-dim or 0-10V (consult factory for all other lengths/drivers)

Standard light outputs are 600 or 800 lumens per foot

LEDs available in 2700K, 3000K, 3500K, and 4000K, within a 3 step MacAdam ellipse all with 90+ CRI typical

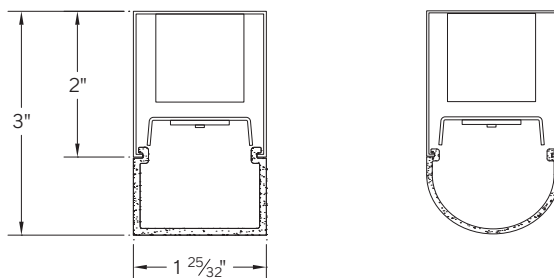
Life: 50,000 hours L₇₀

Passive infrared occupancy sensor available (FOR RECTANGULAR PROFILE ONLY)

Limited five year warranty

UL and C-UL listed for dry and damp locations

SECTION



PERFORMANCE

NOMINAL LENGTH	OUTPUT	LUMENS/ft.	WATTS/ft.	LUMINAIRE LUMENS	EFFICACY (LPW)
4'	L: low	600	5.7	2265	108
	R: regular	800	7.8	2942	101

Note: All data reflects fixtures with 3500K LEDs and rectangular profile



BLT205 -

FIXTURE LENGTH	CORRELATED COLOR TEMPERATURE	DRIVER	LIGHT OUTPUT (lumens per foot)	LENS	OPTIONS	MOUNT	FINISH
2: 22-3/16"	27: 2700K-90+ CRI	ND: non-dimming	L: low - 600	A: rectangular lens profile	EK: add end knock-outs	SM: surface mount	AW: architectural white (semi-matte)
3: 33-3/16"	30: 3000K-90+ CRI	[Dimming]	R: regular - 800	B: round lens profile	ED: emergency driver (4' nom. non-dim or 0-10V only)	WD: wall mount direct light	WH: white (semi-gloss)
4: 44-3/16"	35: 3500K-90+ CRI	DM: 0-10V, 1%	CF: consult factory for custom output		S1A: occ sensor pos.1, 100% - 0% (see options section)	WI: wall mount indirect light	BL: black (semi-matte)
5: 55-3/16"	40: 4000K-90+ CRI	HES: Lutron EcoSystem, soft-on/fade-to-black, 1%			S1B: occ sensor pos.1, 100% - 50% (see options section)	C4: cable mount 4' cable length	MB: matte black
6: 66-3/16"		H2: Lutron Hi-lume 2-wire forward phase, 1%, (120V ONLY)				C8: cable mount 8' cable length	ESS: environmental satin silver
7: 77-3/16"		EL: eldoLED ECOdrive, 0-10V, 1%				CF: consult factory for custom mounting	BZ: bronze
8: 88-3/16"		ES: eldoLED SOLOdrive 0-10V, 0.1%					PR: primer
		ELD: eldoLED ECOdrive DALI, 1%					CF: consult factory for custom finish
		ESD: eldoLED SOLOdrive DALI, 0.1%					

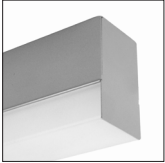
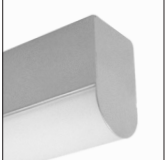


Highlighted fields denote QuickShip Options. See Complete 3-Day QuickShip Terms and Conditions available at www.bartcolighting.com/quickship. Purchase order must reference "QuickShip".

BLT205 | BLT

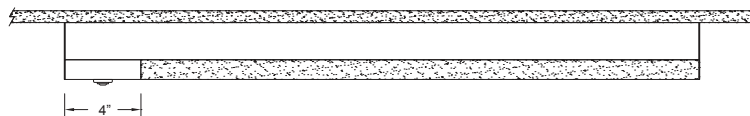
1-25/32" wide sheet steel LED luminaire with drop lens

LENS

ORDERING CODE	DESCRIPTION	SPECIFICATIONS
	A RECTANGULAR ACRYLIC	Frosted acrylic extrusion with rectangular profile
	B ROUNDED ACRYLIC	Frosted acrylic extrusion with rounded profile

OPTIONS

ORDERING CODE	DESCRIPTION	SPECIFICATIONS
EK	ADD END KNOCK OUTS	<p>Ø 7/8" knock outs added at both fixture ends</p> <p>Note: when the S1 option is added, only the end opposite the sensor receives a knock out</p>
ED	EMERGENCY LED DRIVER	<ul style="list-style-type: none"> • Universal 120-277V input voltage emergency driver delivers initial minimum power of 10W for 90 minutes • Available for 4' nominal length non-dim or 0-10V fixture only (consult factory for all other lengths/drivers)
	OCCUPANCY SENSOR	<ul style="list-style-type: none"> • Passive infrared occupancy sensor with hold-off daylighting adjustment (10-120 foot candles) and time delay adjustment from 30 seconds to 30 minutes • AVAILABLE FOR RECTANGULAR PROFILE ONLY • Sensor adds 4" to overall fixture length • Consult factory for custom output
S1A	Occupancy sensor – position 1, 100% – 0%	Sensor located on the top at an end, with 100% – 0% light output setting
S1B	Occupancy sensor – position 1, 100% – 50%	Sensor located on the top at an end, with 100% – 50% light output setting



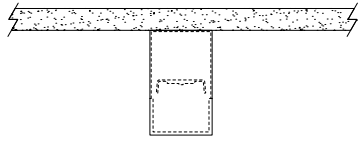
BLT205 | BLT

1-25/32" wide sheet steel LED luminaire with drop lens

MOUNTING

ORDERING CODE

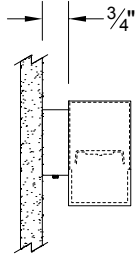
DESCRIPTION



SM

SURFACE MOUNT

Use appropriate fastener through $\varnothing 3/16"$ holes in housing

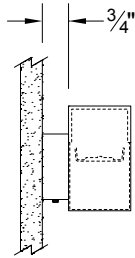


WD

WALL MOUNT - DIRECT ORIENTATION

Mounting option includes:

- 1-7/8" H x 2-1/2" W aluminum bracket projects the fixture housing 3/4" from the wall surface

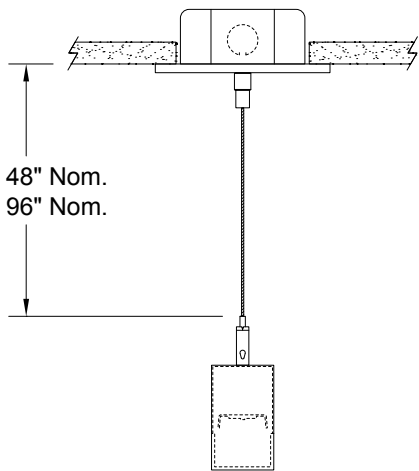


WI

WALL MOUNT - INDIRECT ORIENTATION

Mounting option includes:

- 1-7/8" H x 2-1/2" W aluminum bracket projects the fixture housing 3/4" from the wall surface



C4 and C8

CABLE MOUNT

Mounting option includes:

- $\varnothing 1/16"$ x 48" (C4) or 96" (C8) aircraft cables
- 60" (C4) or 108" (C8) power cable in coordinating finish
- Bracket bars
- $\varnothing 5"$ white canopies
- Ceiling couplers
- Side exit cable grippers

C8 mounting option available for QuickShip

BLT205 | BLT

1-25/32" wide sheet steel LED luminaire with drop lens

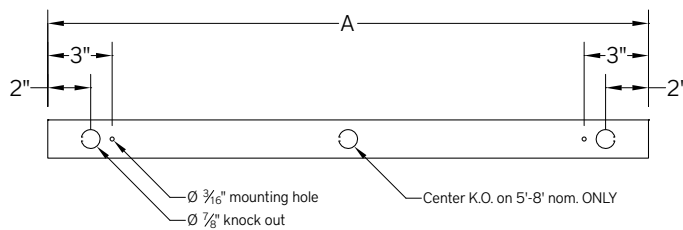
LENGTH / MOUNTING DIMENSIONS

ORDERING CODE	LENGTH A*	LENGTH B*
2	22-3/16"	16-3/16"
3	33-3/16"	27-3/16"
4	44-3/16"	38-3/16"
5	55-3/16"	49-3/16"
6	66-3/16"	60-3/16"
7	77-3/16"	71-3/16"
8	88-3/16"	82-3/16"

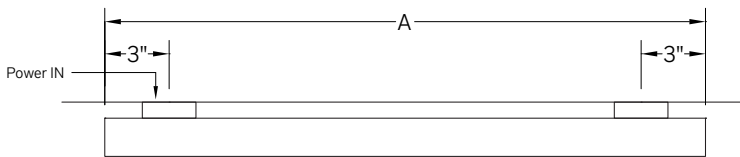
* Add 4" to "A" and "B" dimension when using the S1 occupancy sensor option

LENGTH INFORMATION

Back Plan - Surface Mount Option



Plan - WI or WD Wall Mount Option



Side View - Cable Mount Single Fixture Option

