

BLT205 | BLT

1-25/32" wide sheet steel LED luminaire with drop lens

Project: _____ Type: _____



FEATURES

The BLT205 luminaire provides high performance with high value. The heavy gauge, sheet formed 1-25/32" wide steel housing is offered with rectangular or rounded profile frosted acrylic lenses and 90+ CRI LEDs. Multiple driver, light output and mounting options enable this basic linear fixture to provide great versatility in applications. The BLT205 is Controls Capable, being offered with a variety of integrated control options.

Fixture with certain options available for 7-Day QuickShip.

SPECIFICATIONS

Housing is formed and welded, 20 ga. steel, chemically treated to resist corrosion and enhance paint adhesion.

Model variations offered in rectangular or rounded profiles for surface, wall mount and cable suspended applications.

Standard finishes as shown below.

Available as single fixtures in nominal lengths of 2'-8'.

Surface mount models include knock outs on the rear and surface or suspended models are available with optional end knock outs.

Standard integral 120-277V driver offered with 0-10V dimming or non-dim (other dimming driver options available).

Integral 120-277V emergency battery backup available for 4' nominal non-dim or 0-10V (consult factory for all other lengths/drivers).

Standard light outputs are 600 or 800 lumens per foot.

LEDs available in 2700K, 3000K, 3500K, and 4000K, within a 3 step MacAdam ellipse all with 90+ CRI typical.

Life: 50,000 hours L₇₀.

Bartco Lighting Controls Capable fixture available with integrated controls from a variety of suppliers (FOR RECTANGULAR PROFILE ONLY).

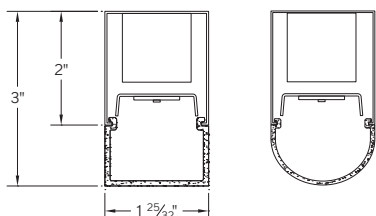
Limited five year warranty.

UL and C-UL listed for dry and damp locations.

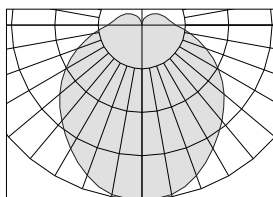


Highlighted fields denote QuickShip Options. See complete 7-Day QuickShip Terms and Conditions available at www.bartcolighting.com/quickship-products/. Purchase order must reference "QuickShip".

SECTION



DISTRIBUTION



PERFORMANCE

| NOMINAL LENGTH | OUTPUT | LUMENS/ft. | WATTS/ft. | LUMINAIRE LUMENS | EFFICACY (LPW) |
|----------------|------------|------------|-----------|------------------|----------------|
| 4' | L: low | 600 | 5.7 | 2265 | 108 |
| | R: regular | 800 | 7.8 | 2942 | 101 |

Note: All data reflects fixtures with 3500K LEDs and rectangular profile



BLT205 -


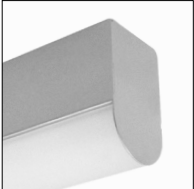
| FIXTURE LENGTH | CORRELATED COLOR TEMPERATURE | DRIVER | LIGHT OUTPUT (lumens per foot) | OPTIC | OPTIONS | MOUNT | FINISH |
|----------------|------------------------------|--|---------------------------------------|-----------------------------|--|---|---------------------------------------|
| 2: 22-3/16" | 27: 2700K-90+ CRI | ND: non-dimming [Dimming] | L: low - 600 | A: rectangular lens profile | EK: add end knock-outs | SM: surface mount | AW: architectural white (semi-matte) |
| 3: 33-3/16" | 30: 3000K-90+ CRI | D: 0-10V, 1% | R: regular - 800 | B: round lens profile | ED: emergency driver (4' nom. non-dim or 0-10V only) | WD: wall mount direct light | WH: white (semi-gloss) |
| 4: 44-3/16" | 35: 3500K-90+ CRI | DTR: triac, 1%, (120V ONLY) | CF: consult factory for custom output | | EN1: Enlighted FS-D22 ‡ | WI: wall mount indirect light | BL: black (semi-matte) |
| 5: 55-3/16" | 40: 4000K-90+ CRI | DLV: electronic low voltage, 1%, (120V ONLY) | | | ES4: Philips EasySense SNS211 MC ‡ | C4: cable mount 4' cable length | MB: matte black |
| 6: 66-3/16" | | HES: Lutron EcoSystem, soft-on/fade-to-black, 1% | | | CA1: Casambi CBU-A2D ‡ | C8: cable mount 8' cable length | ESS: environmental satin silver |
| 7: 77-3/16" | | EL: eldoLED ECOdrive 0-10V, 1% | | | NL1: nLight RES7 ‡ | CF: consult factory for custom mounting | BZ: bronze |
| 8: 88-3/16" | | ES: eldoLED SOLOdrive 0-10V, 0.1% | | | NL2: nLight RIO ‡ | | PR: primer |
| | | ELD: eldoLED ECOdrive DALI, 1% | | | LA1: Lutron Athena A-WN-D01-RF-WH ‡ | | CF: consult factory for custom finish |
| | | ESD: eldoLED SOLOdrive DALI, 0.1% | | | LA2: Lutron Athena A-WN-D01-OCC-WH ‡ | | |

‡ See Integrated Controls section for driver compatibility information.

BLT205 | BLT

1-25/32" wide sheet steel LED luminaire with drop lens

OPTIC

| ORDERING CODE | DESCRIPTION | SPECIFICATIONS |
|---|--------------------------|--|
|  | A RECTANGULAR ACRYLIC | Frosted acrylic extrusion with rectangular profile |
|  | B ROUNDED ACRYLIC | Frosted acrylic extrusion with rounded profile |

OPTIONS

| ORDERING CODE | DESCRIPTION | SPECIFICATIONS |
|---------------|----------------------|--|
| EK | ADD END KNOCK OUTS | Ø 7/8" knock outs added at both fixture ends. Note: when any Control Option is added, only the end opposite the control receives a knock out. |
| ED | EMERGENCY LED DRIVER | <ul style="list-style-type: none">• Universal 120-277V input voltage emergency driver delivers initial minimum power of 10W for 90 minutes.• Available for 4' nominal length non-dim or 0-10V fixture only (consult factory for all other lengths/drivers). |

BLT205 | BLT

1-25/32" wide sheet steel LED luminaire with drop lens

OPTIONS - INTEGRATED CONTROLS

Note: Control option takes up 4" of the overall lens length. **AVAILABLE FOR RECTANGULAR PROFILE OPTION ONLY.** For "A" optic option, controls are mounted to 1" H sheet formed cover that conforms to the lens profile.



| | ORDERING CODE | LIGHT OUTPUT SETTING | MODEL | CONTROL PROTOCOL | FUNCTIONS | COMPATIBLE DRIVERS |
|---|---------------|--------------------------|-----------------|--------------------|--|---|
|  | EN1 | Set during commissioning | FS-D22 | Bluetooth Wireless | PIR occupancy, ambient light sensing, daylight harvesting, and environment monitoring for use within an Enlighted control network. | Provided with Advance sensor ready series 0-10V dimming drivers. |
|  | ES4 | Set during commissioning | SNS211 MC | Bluetooth Wireless | Occupancy, daylight harvesting and task tuning sensor with advance grouping, for use within a MasterConnect network. | Provided with Advance sensor ready series 0-10V dimming drivers. |
|  | CA1 | Set during commissioning | CBU-A2D | Bluetooth Wireless | 0-10V/DALI driver controller, for use within a Casambi ecosystem. | For use with 0-10V or DALI drivers. Consult factory for details. |
|  | NL1 | Set during commissioning | RES7 1 | Radio Wireless | Dimming, PIR occupancy detection and daylight harvesting, for use within an nLight AIR network. | Provided with Advance sensor ready series or eldoLED 0-10V drivers. |
| | NL2 | | RIO 1 | | Dimming, for use within an nLight AIR network. | |
|  | LA1 | Set during commissioning | A-WN-D01-RF-WH | Radio Wireless | Dimming only for use with an Athena control system. | Provided with Advance sensor ready series or eldoLED 0-10V or eldoLED DALI-2 drivers. |
| | LA2 | | A-WN-D01-OCC-WH | | Dimming, PIR occupancy and daylight sensor for use with an Athena control system. | |

1. Consult your Acuity representative for application-specific model number.

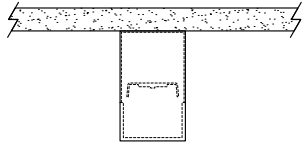
BLT205 | BLT

1-25/32" wide sheet steel LED luminaire with drop lens

MOUNTING

ORDERING CODE

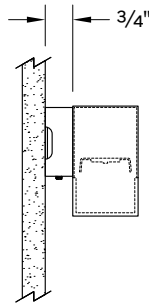
DESCRIPTION



SM

SURFACE MOUNT

Use appropriate fastener through $\varnothing 3/16$ " holes in housing

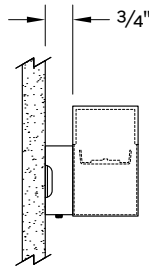


WD

WALL MOUNT - DIRECT ORIENTATION

Mounting option includes:

- 1-7/8" H x 4-1/2" W sheet aluminum bracket projects the fixture housing 3/4" from the wall surface

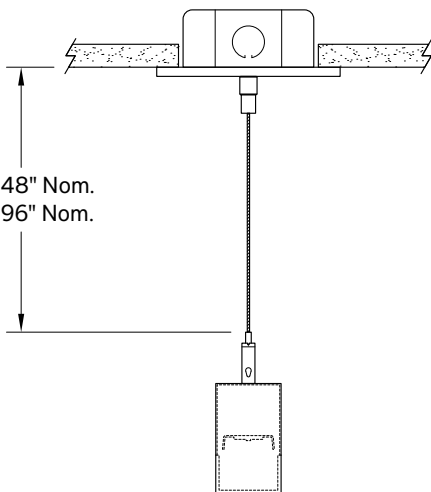


WI

WALL MOUNT - INDIRECT ORIENTATION

Mounting option includes:

- 1-7/8" H x 4-1/2" W sheet aluminum bracket projects the fixture housing 3/4" from the wall surface



C4 and C8

CABLE MOUNT

Mounting option includes:

- $\varnothing 1/16$ " x 48" (C4) or 96" (C8) aircraft cables
- 60" (C4) or 108" (C8) power cable in coordinating finish
- Bracket bars
- $\varnothing 5$ " white canopies
- Ceiling couplers
- Side exit cable grippers

BLT205 | BLT

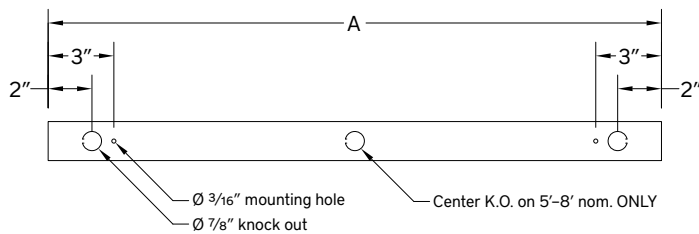
1-25/32" wide sheet steel LED luminaire with drop lens

LENGTH / MOUNTING DIMENSIONS

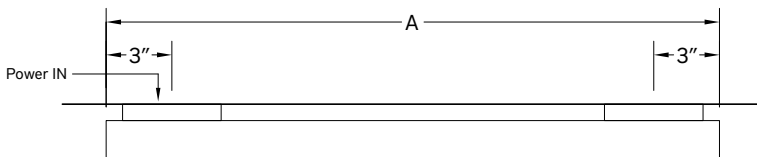
| ORDERING CODE | LENGTH A* | LENGTH B* |
|---------------|-----------|-----------|
| 2 | 22-3/16" | 16-3/16" |
| 3 | 33-3/16" | 27-3/16" |
| 4 | 44-3/16" | 38-3/16" |
| 5 | 55-3/16" | 49-3/16" |
| 6 | 66-3/16" | 60-3/16" |
| 7 | 77-3/16" | 71-3/16" |
| 8 | 88-3/16" | 82-3/16" |

LENGTH INFORMATION

Back Plan - Surface Mount Option



Plan - WI or WD Wall Mount Option



Side View - Cable Mount Option

