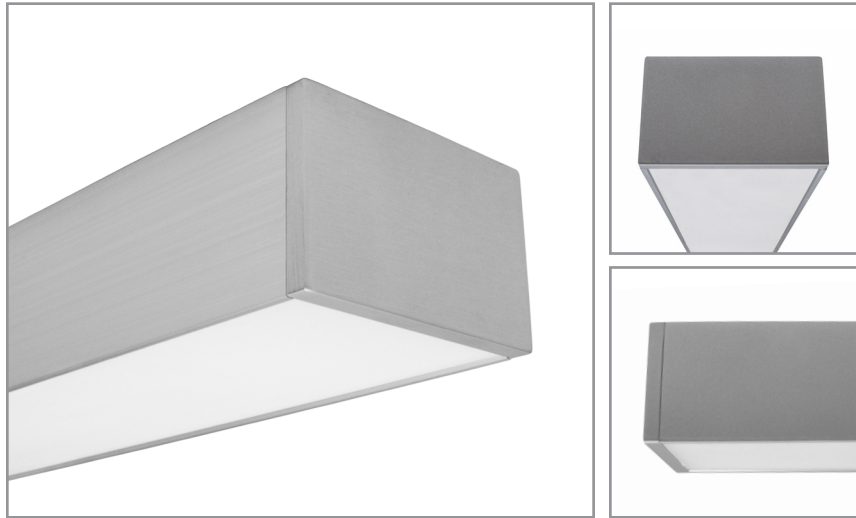


Project: _____ Type: _____



FEATURES

The BSS230 is a low profile, remote driven, linear LED luminaire for general lighting applications. The 2" tall by 3-1/8" wide extruded aluminum housing is capped with a flat lens. 1/4" thick machined aluminum end caps finish off the fixture ends.

SPECIFICATIONS

Fixture constructed of an extruded aluminum housing, extruded, frosted acrylic lens and machined aluminum end caps

Model variations offered for surface and cable suspended applications

Field adjustable cable hangers can be located at nearly any point along the fixture length

Standard finishes as shown below

Available in nominal lengths of 2'-8 as single fixtures and continuous runs

Surface mount fixtures wired with 10' low voltage leads

Included standard remote 120-277V driver offered with 0-10V dimming or non-dim (other dimming driver options available)

Remote mounted emergency battery backup available (ordered separately, consult factory for details)

Standard outputs are 5W and 8W nominal per foot

LEDs available in 2700K, 3000K, 3500K, and 4000K, within a 3 step MacAdam ellipse, all with 90+ CRI typical

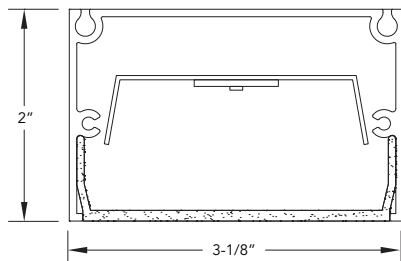
Life: 50,000 hours L₇₀

Limited five year warranty

UL and C-UL listed for dry and damp locations



SECTION



BSS230 -

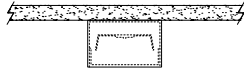
<p>NOMINAL FIXTURE LENGTH*</p> <p>2: 23" 3: 34" 4: 45" 5: 56" 6: 67" 7: 78" 8: 89"</p>	<p>CORRELATED COLOR TEMPERATURE</p> <p>27: 2700K-90+ CRI 30: 3000K-90+ CRI 35: 3500K-90+ CRI 40: 4000K-90+ CRI</p>	<p>DRIVER</p> <p>ND: non-dimming [Dimming] D: 0-10V, 1% HES: Lutron EcoSystem, soft-on/fade-to-black, 1% H2: Lutron Hi-lume 2-wire forward phase, 1%, (120V ONLY) EL: eldoLED ECOdrive, 0-10V, 1%</p>	<p>WATTS/FOOT</p> <p>5: 5 W/ft. 8: 8 W/ft. CF: consult factory for custom output</p>	<p>MOUNT</p> <p>SM: surface mount C4: cable mount 4' cable length C8: cable mount 8' cable length CF: consult factory for custom mounting</p>	<p>RUN CONFIGURATION</p> <p>SN: single ST: starter AD: adder TR: terminator</p>	<p>FINISH</p> <p>AW: architectural white (semi-matte) WH: white (semi-gloss) BL: black (semi-matte) MB: matte black ESS: environmental satin silver BZ: bronze PR: primer CF: consult factory for custom finish</p> <hr/> <p>SA: satin anodize (may require additional lead time)</p>
---	---	---	---	--	--	--

Note: Each fixture includes a remote driver matched for fixture length and light output
* Actual dimension dependent on run configuration

MOUNTING

ORDERING CODE

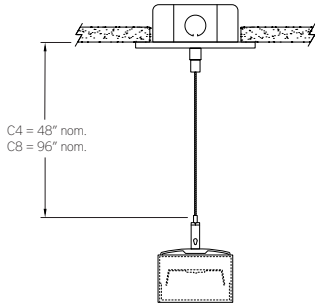
DESCRIPTION



SM

SURFACE MOUNT

- Use appropriate fastener through $\varnothing 3/16"$ holes in housing
- 10' low voltage leads exit out the rear at an end



C4 and C8

CABLE MOUNT

Mounting option includes:

- Extruded aluminum cable hanger bracket (can be located at nearly any point along fixture length)
- $\varnothing 1/16" \times 48"$ (C4) or $96"$ (C8) aircraft cables
- 18 gauge $\times 60"$ (C4) or $108"$ (C8) power cable (in coordinating finish)
- Bracket bars
- $\varnothing 5"$ white canopies
- Ceiling couplers
- Side exit cable grippers

BSS230 | **bodhi**

3-1/8" wide LED luminaire with flush lens, remote driver

LENGTH/MOUNTING DIMENSIONS

Note: Recommended dimensions. Cable hangers are adjustable and can be located at nearly any point along the fixture length.

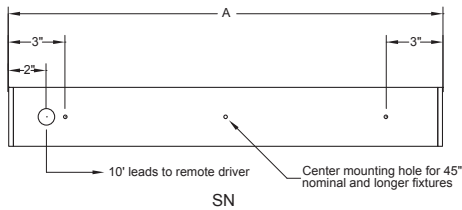
ORDERING CODE	LENGTH A	LENGTH B	LENGTH C	LENGTH D	LENGTH E
2	23"	22-1/2"	22"	17"	19-1/2"
3	34"	33-1/2"	33"	28"	30-1/2"
4	45"	44-1/2"	44"	39"	41-1/2"
5	56"	55-1/2"	55"	50"	52-1/2"
6	67"	66-1/2"	66"	61"	63-1/2"
7	78"	77-1/2"	77"	72"	74-1/2"
8	89"	88-1/2"	88"	83"	85-1/2"

RUN CONFIGURATION INFORMATION

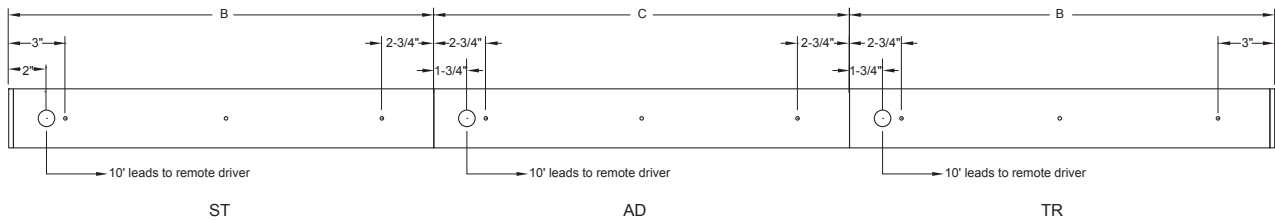
ORDERING CODE	DESCRIPTION
SN	Single
ST	Starter
AD	Adder
TR	Terminator

RUN INFORMATION

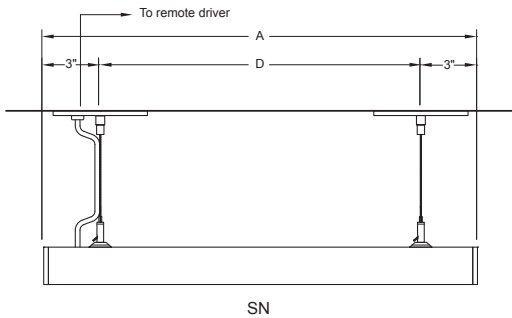
Back Plan - Surface Mount Single Fixture Option



Back Plan - Surface Mount Continuous Run Option



Side View - Cable Mount Single Fixture Option



Side View - Cable Mount Continuous Run Option

