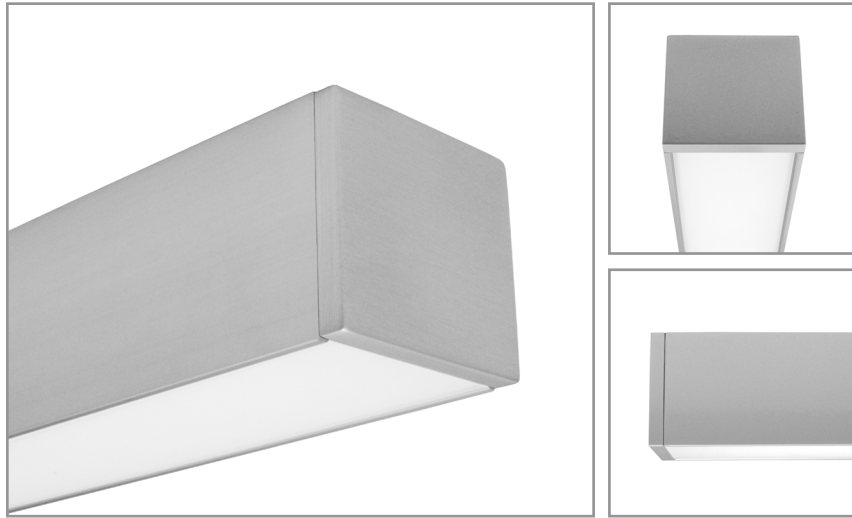


BSS225 | **bodhi**

2-1/8" wide LED luminaire with flush lens, remote driver

Project: _____ Type: _____



FEATURES

The BSS225 is a low profile, remote driven, linear LED luminaire for general lighting applications. The 2" tall by 2-1/8" wide extruded aluminum housing is capped with a flat, frosted lens. 1/4" thick machined aluminum end caps finish off the fixture ends.

SPECIFICATIONS

Fixture constructed of an extruded aluminum housing, extruded, frosted acrylic lens and machined aluminum end caps

Model variations offered for surface or cable suspended applications and with wide or narrow light distributions

Field adjustable cable hangers can be located at nearly any point along the fixture length

Standard finishes as shown below

Available in nominal lengths of 2'-8' as single fixtures and continuous runs

Surface mount fixtures wired with 10' low voltage leads

Included standard remote 120-277V driver offered with 0-10V dimming or non-dim (other dimming driver options available)

Remote mounted emergency battery backup available (ordered separately, consult factory for details)

Standard outputs are 500, 650 and 850 lumens per foot

LEDs available in 2700K, 3000K, 3500K, and 4000K, within a 3 step MacAdam ellipse, all with 90+ CRI typical

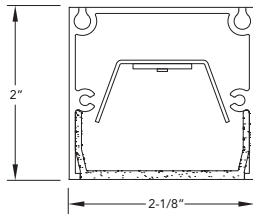
Life: 50,000 hours L₇₀

Limited five year warranty

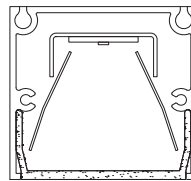
UL and C-UL listed for dry and damp locations

SECTION

WIDE DISTRIBUTION



NARROW DISTRIBUTION



PERFORMANCE

NOMINAL LENGTH	OUTPUT	LUMENS/ft.	WATTS/ft.	LUMINAIRE LUMENS	EFFICACY (LPW)
4'	L: low	500	5.5	1874	91
	R: regular	650	7.6	2434	85
	H: high	850	10.6	3198	81

Note: All data reflects fixtures with 3500K LEDs and wide light distribution



BSS225 -

NOMINAL FIXTURE LENGTH*

- 2: 23"
- 3: 34"
- 4: 45"
- 5: 56"
- 6: 67"
- 7: 78"
- 8: 89"

CORRELATED COLOR TEMPERATURE

- 27: 2700K-90+ CRI
- 30: 3000K-90+ CRI
- 35: 3500K-90+ CRI
- 40: 4000K-90+ CRI

DRIVER

- ND: non-dimming
- [Dimming]
- D: 0-10V, 1%
- DTR: triac, 1%
- DLV: electronic low voltage, 1%
- HES: Lutron EcoSystem, soft-on/fade-to-black, 1%
- EL: eldoLED ECO-drive 0-10V, 1%
- ES: eldoLED SOLO-drive 0-10V, 0.1%
- ELD: eldoLED ECOdrive DALI, 1%
- ESD: eldoLED SOLO-drive DALI, 0.1%

LIGHT DISTRIBUTION

- W: wide
- N: narrow

LIGHT OUTPUT (lumens per foot)

- L: low - 500
- R: regular - 650
- H: high - 850
- CF: consult factory for custom output

RUN CONFIGURATION

- SN: single
- ST: starter
- AD: adder
- TR: terminator

MOUNT

- SM: surface mount
- C4: cable mount 4' cable length
- C8: cable mount 8' cable length
- CF: consult factory for custom mounting

FINISH

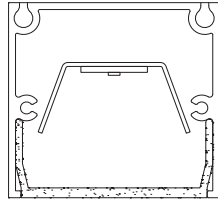
- AW: architectural white (semi-matte)
- WH: white (semi-gloss)
- BL: black (semi-matte)
- MB: matte black
- ESS: environmental satin silver
- BZ: bronze
- PR: primer
- CF: consult factory for custom finish
- SA: satin anodize (may require additional lead time)

* Actual dimension dependent on run configuration. Note: Each fixture includes a remote driver matched for fixture length and light output.

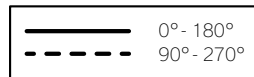
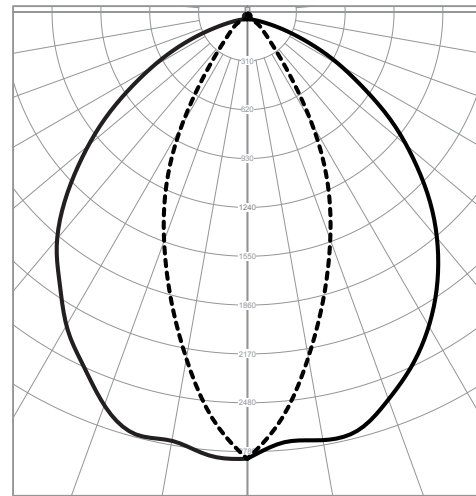
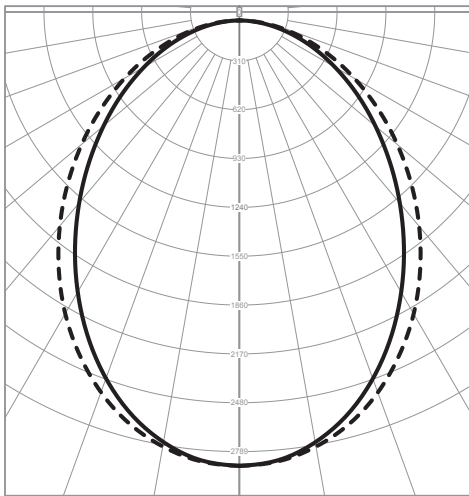
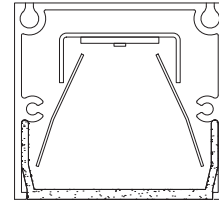
LIGHT DISTRIBUTION

Consult photometry files on website for detailed information

WIDE DISTRIBUTION



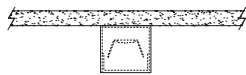
NARROW DISTRIBUTION



MOUNTING

ORDERING CODE

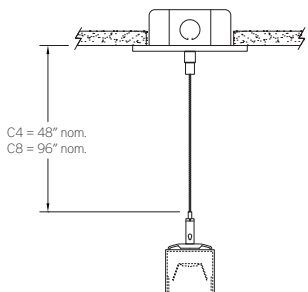
DESCRIPTION



SM

SURFACE MOUNT

- Use appropriate fastener through $\text{Ø}3/16"$ holes in housing
- 10' low voltage leads exit out the rear at an end



C4 and C8

CABLE MOUNT

Mounting option includes:

- Extruded aluminum cable hanger bracket (can be located at any at nearly any point along the fixture length)
- $\text{Ø} 1/16"$ x 48" (C4) or 96" (C8) aircraft cables
- 18 gauge x 60" (C4) or 108" (C8) power cable (in coordinating finish)
- Bracket bars
- $\text{Ø} 5"$ white canopies
- Ceiling couplers
- Side exit cable grippers

