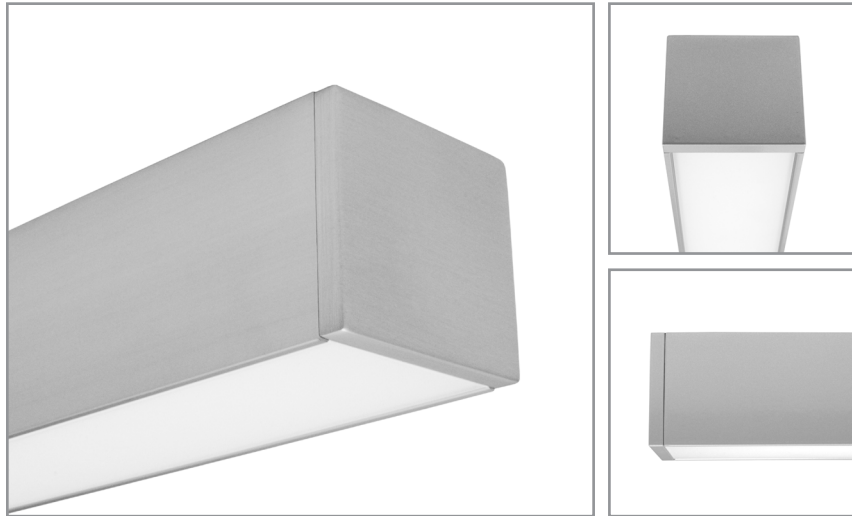


BSS225 | **bodhi**

2-1/8" wide LED luminaire with flush lens, remote driver

Project: _____ Type: _____



FEATURES

The BSS225 is a low profile, remote driven, linear LED luminaire for general lighting applications. The 2" tall by 2-1/8" wide extruded aluminum housing is capped with a flat, frosted lens. 1/4" thick machined aluminum end caps finish off the fixture ends.

SPECIFICATIONS

Fixture constructed of an extruded aluminum housing, extruded, frosted acrylic lens and machined aluminum end caps

Model variations offered for surface or cable suspended applications and with wide or narrow light distributions

Field adjustable cable hangers can be located at nearly any point along the fixture length

Standard finishes as shown below

Available in nominal lengths of 2'-8' as single fixtures and continuous runs

Surface mount fixtures wired with 10' low voltage leads

Included standard remote 120-277V driver offered with 0-10V dimming or non-dim (other dimming driver options available)

Remote mounted emergency battery backup available (ordered separately, consult factory for details)

Standard outputs are 500, 650 and 850 lumens per foot

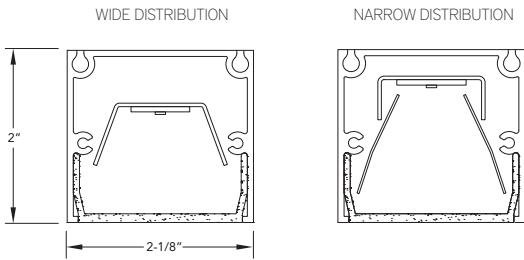
LEDs available in 2700K, 3000K, 3500K, and 4000K, within a 3 step MacAdam ellipse, all with 90+ CRI typical

Life: 50,000 hours L₇₀

Limited five year warranty

UL and C-UL listed for dry and damp locations

SECTION



PERFORMANCE

NOMINAL LENGTH	OUTPUT	LUMENS/ft.	WATTS/ft.	LUMINAIRE LUMENS	EFFICACY (LPW)
4'	L: low	500	5.5	1874	91
	R: regular	650	7.6	2434	85
	H: high	850	10.6	3198	81

Note: All data reflects fixtures with 3500K LEDs and wide light distribution



BSS225 -

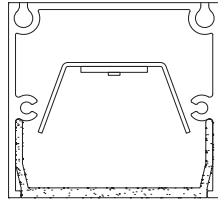
NOMINAL FIXTURE LENGTH* 2: 23" 3: 34" 4: 45" 5: 56" 6: 67" 7: 78" 8: 89"	CORRELATED COLOR TEMPERATURE 27: 2700K-90+ CRI 30: 3000K-90+ CRI 35: 3500K-90+ CRI 40: 4000K-90+ CRI	DRIVER ND: non-dimming [Dimming] DM: 0-10V, 1% HES: Lutron EcoSystem, soft-on/fade-to-black, 1% H2: Lutron Hi-lume 2-wire forward phase, 1%, (120V ONLY) EL: eldoLED ECOdrive 0-10V, 1% ES: eldoLED SOLOdrive 0-10V, 0.1% ELD: eldoLED ECOdrive DALI, 1% ESD: eldoLED SOLOdrive DALI, 0.1%	LIGHT DISTRIBUTION W: wide N: narrow LIGHT OUTPUT (lumens per foot) L: low – 500 R: regular – 650 H: high – 850 CF: consult factory for custom output	RUN CONFIGURATION SN: single ST: starter AD: adder TR: terminator MOUNT SM: surface mount C4: cable mount 4' cable length C8: cable mount 8' cable length CF: consult factory for custom mounting	FINISH AW: architectural white (semi-matte) WH: white (semi-gloss) BL: black (semi-matte) MB: matte black ESS: environmental satin silver BZ: bronze PR: primer CF: consult factory for custom finish SA: satin anodize (may require additional lead time)
--	---	---	--	--	--

* Actual dimension dependent on run configuration
 Note: Each fixture includes a remote driver matched for fixture length and light output.

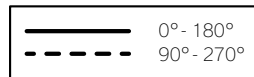
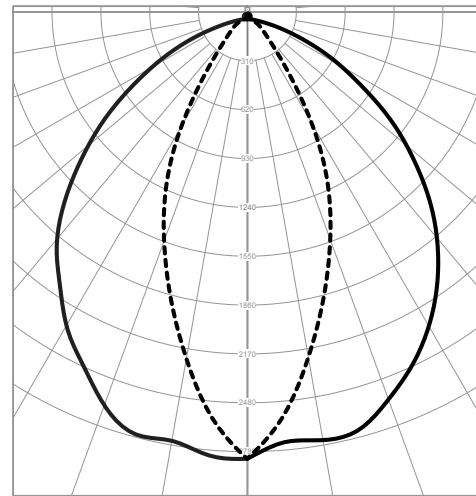
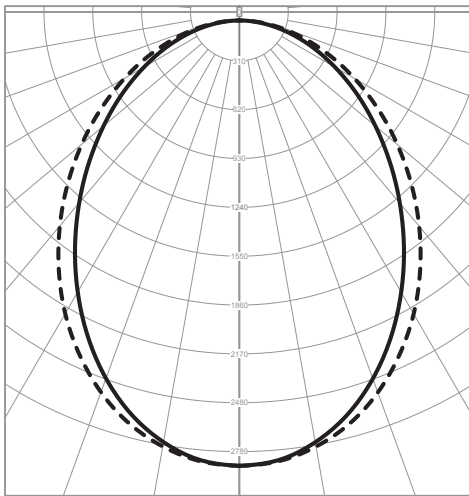
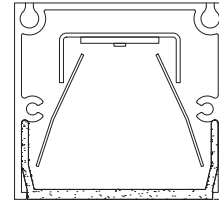
LIGHT DISTRIBUTION

Consult photometry files on website for detailed information

WIDE DISTRIBUTION



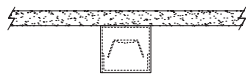
NARROW DISTRIBUTION



MOUNTING

ORDERING CODE

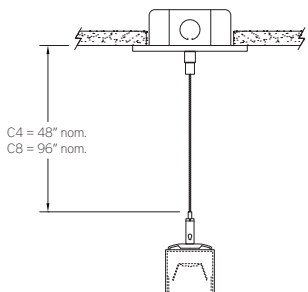
DESCRIPTION



SM

SURFACE MOUNT

- Use appropriate fastener through Ø3/16" holes in housing
- 10' low voltage leads exit out the rear at an end



C4 and C8

CABLE MOUNT

Mounting option includes:

- Extruded aluminum cable hanger bracket (can be located at any point along the fixture length)
- Ø 1/16" x 48" (C4) or 96" (C8) aircraft cables
- 18 gauge x 60" (C4) or 108" (C8) power cable (in coordinating finish)
- Bracket bars
- Ø 5" white canopies
- Ceiling couplers
- Side exit cable grippers

