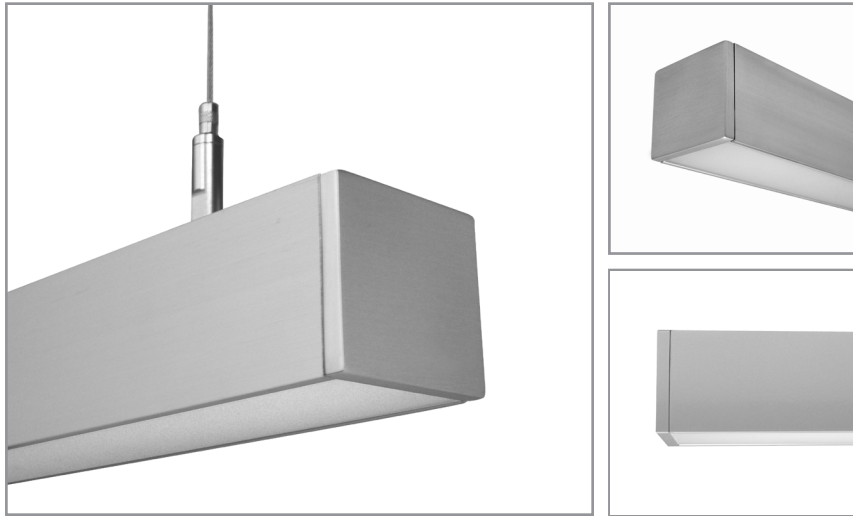


BSS225 | **bodhi**

2-1/8" wide LED luminaire with flush lens, remote driver



Project: _____ Type: _____



FEATURES

The BSS225 is a low profile, remote driven, linear LED luminaire for general lighting applications. The 2" tall by 2-1/8" wide extruded aluminum housing is capped with a flat, frosted lens. 1/4" thick machined aluminum end caps finish off the fixture ends.

SPECIFICATIONS

Fixture constructed of an extruded aluminum housing, extruded, frosted acrylic lens and machined aluminum end caps

Model variations offered for surface or cable suspended applications and with wide or narrow light distributions

Field adjustable cable hangers can be located at nearly any point along the fixture length

Standard finishes as shown below

Available in nominal lengths of 2'-8' as single fixtures and continuous runs

Surface mount fixtures wired with 10' low voltage leads

Included standard remote 120-277V driver offered with 0-10V dimming or non-dim (other dimming driver options available)

Remote mounted emergency battery backup available (ordered separately, consult factory for details)

Standard outputs are 500, 650 and 850 lumens per foot

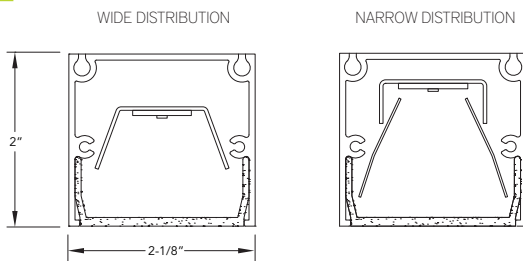
LEDs available in 2700K, 3000K, 3500K, and 4000K, within a 3 step MacAdam ellipse, all with 90+ CRI typical

Life: 50,000 hours L₇₀

Limited five year warranty

UL and C-UL listed for dry and damp locations

SECTION



PERFORMANCE

NOMINAL LENGTH	OUTPUT	LUMENS/ft.	WATTS/ft.	LUMINAIRE LUMENS	EFFICACY (LPW)
4'	L: low	500	5.5	1874	91
	R: regular	650	7.6	2434	85
	H: high	850	10.6	3198	81

*Note: All data reflects fixtures with 3500K LEDs and wide light distribution



BSS225 -

NOMINAL FIXTURE LENGTH*

2: 23"
3: 34"
4: 45"
5: 56"
6: 67"
7: 78"
8: 89"

CORRELATED COLOR TEMPERATURE

27: 2700K - 90+ CRI
30: 3000K - 90+ CRI
35: 3500K - 90+ CRI
40: 4000K - 90+ CRI

DRIVER

ND: non-dimming
[Dimming]
D: 0-10V, 1%
HES: Lutron EcoSystem, soft-on/fade-to-black, 1%
H2: Lutron Hi-lume 2-wire forward phase, 1%, (120V ONLY)
E5: Lutron EcoSystem 5-Series, 5%
EL: eldoLED ECOdrive, 0-10V, 1%

LIGHT DISTRIBUTION

W: wide
N: narrow

LIGHT OUTPUT (lumens per foot)

L: low - 500
R: regular - 650
H: high - 850
CF: consult factory for custom output

RUN CONFIGURATION

SN: single
ST: starter
AD: adder
TR: terminator

MOUNT

SM: surface mount
C4: cable mount 4' cable length
C8: cable mount 8' cable length
CF: consult factory for custom mounting

FINISH

AW: architectural white (semi-matte)
WH: white (semi-gloss)
BL: black (semi-matte)
MB: matte black
ESS: environmental satin silver
BZ: bronze
PR: primer
CF: consult factory for custom finish
SA: satin anodize (may require additional lead time)

* Actual dimension dependent on run configuration

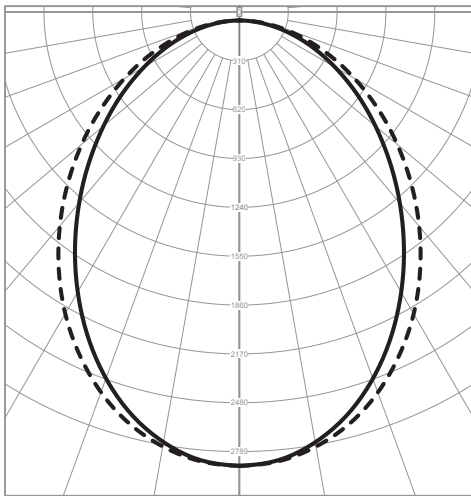
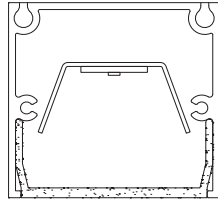
Note: Each fixture includes a remote driver matched for fixture length and light output.

©2020 Bartco Lighting, Inc. These products are protected by patents and patents pending. Unauthorized use or reproduction of illustrations, photographs or text is prohibited. Bartco Lighting reserves the right to discontinue products or to change the technical and/or design specifications at any time.

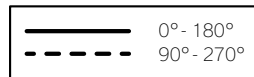
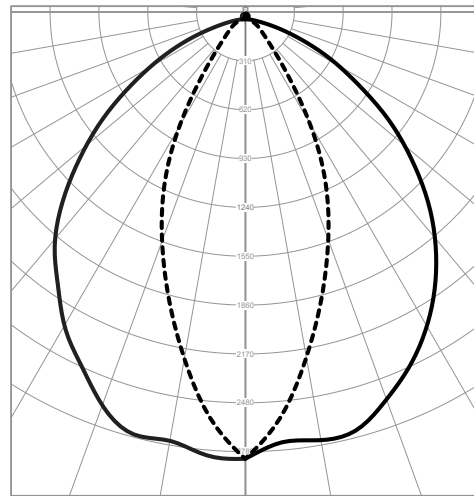
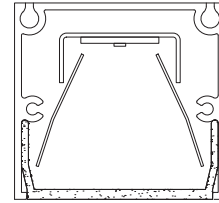
LIGHT DISTRIBUTION

Consult photometry files on website for detailed information

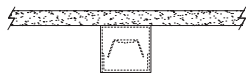
WIDE DISTRIBUTION



NARROW DISTRIBUTION



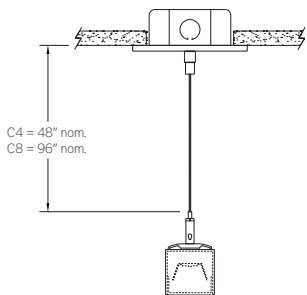
MOUNTING



SM

SURFACE MOUNT

- Use appropriate fastener through $\varnothing 3/16"$ holes in housing
- 10' low voltage leads exit out the rear at an end



C4 and C8

CABLE MOUNT

Mounting option includes:

- Extruded aluminum cable hanger bracket (can be located at any at nearly any point along the fixture length)
- $\varnothing 1/16"$ x 48" (C4) or 96" (C8) aircraft cables
- 18 gauge x 60" (C4) or 108" (C8) power cable (in coordinating finish)
- Bracket bars
- $\varnothing 5"$ white canopies
- Ceiling couplers
- Side exit cable grippers

