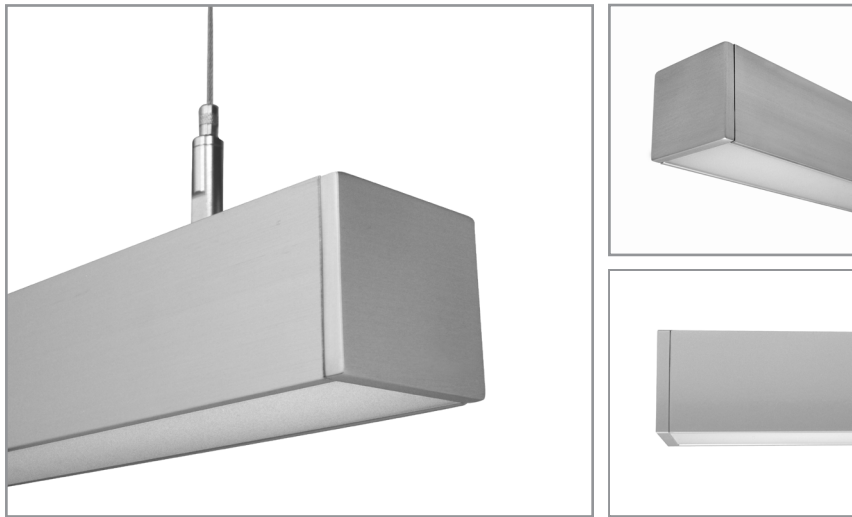


BSS225 | GENERAL INFORMATION

2-1/8" wide rectilinear LED fixture with flat frosted lens for remote driver operation

Project: _____ Type: _____



FEATURES

The BSS225 is a low profile, remote driven, linear LED luminaire for general lighting applications. The 2" tall by 2-1/8" wide extruded aluminum housing is capped with a flat, frosted lens that produces diffuse, seamless illumination. 1/4" thick machined aluminum end caps finish off the fixture ends..

SPECIFICATIONS

Fixture constructed of an extruded aluminum housing, extruded, frosted acrylic lens and machined aluminum end caps

Model variations offered for surface or cable suspended applications and with wide or narrow light distributions

Field adjustable cable hangers can be located at nearly any point along the fixture length

Standard finishes include satin anodize, or Fluoroscope White (semi-matte), white (semi-gloss), black (semi-matte), matte black, silver, platinum*, bronze and primer powder coat, applied post production (consult factory for custom finishes)

Available in nominal lengths of 23"-89" as single fixtures and continuous runs

Surface mount fixtures wired with 10' low voltage leads

Requires a remote driver and enclosure (ordered separately, refer to supplemental driver sheet for general information and consult factory for details and specification model number)

Remote mounted emergency battery backup available (ordered separately, consult factory for details)

Standard outputs are 5W and 8W nominal per foot

LEDs available in 3000K, 3500K, 4000K, 5000K, all with a typical 84-85 CRI and color consistency within a 3 step MacAdam ellipse

Lamp life rated at 50,000 hours

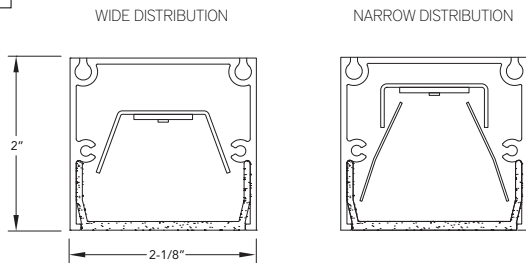
Limited five year warranty

UL and C-UL listed for dry and damp locations

IBEW manufactured and assembled

Made in U.S.A.

SECTION



PLAN



SIDE



PERFORMANCE

NOMINAL LENGTH	WATTS/ft.	TOTAL WATTS	LUMINAIRE LUMENS	EFFICACY
45"	8.5	31.8	2932	92

*Note: All data reflects fixtures with 3500K LEDs and wide light distribution

BSS225 +

NOMINAL FIXTURE LENGTH**	COLOR TEMPERATURE	WATTS/FOOT	LIGHT DISTRIBUTION	MOUNT	RUN CONFIGURATION	FINISH
23: 23" 34: 34" 45: 45" 56: 56" 67: 67" 78: 78" 89: 89"	30: 3000K - 84 CRI 35: 3500K - 85 CRI 40: 4000K - 85 CRI 50: 5000K - 85 CRI	5: 5 W/ft. 8: 8.5 W/ft. CF: consult factory for custom output	W: wide N: narrow	SM: surface mount CM48: cable mount 48" cable length CM96: cable mount 96" cable length CF: consult factory for custom mounting	SN: single ST: starter AD: adder TR: terminator	SA: satin anodize FW: Fluoroscope white (semi-matte) WH: white (semi-gloss) BL: black (semi-matte) MB: matte black SL: silver PT: platinum* BZ: bronze PR: primer CF: consult factory for custom finish

Note: Remote driver ordered separately, refer to supplemental driver sheet for general information and consult factory for details and specification model number

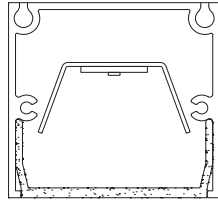
* A standard finish requiring a two step coating process, premium will apply.

** Actual dimension dependent on run configuration

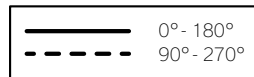
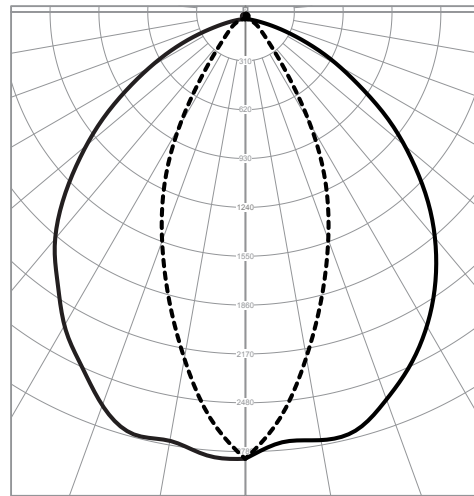
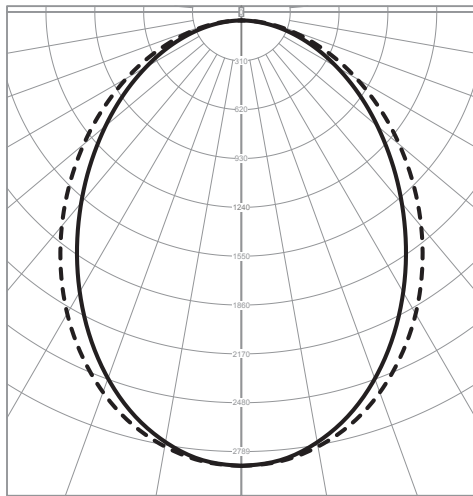
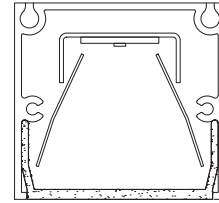
LIGHT DISTRIBUTION

Consult photometry files on website for detailed information

WIDE DISTRIBUTION



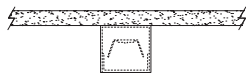
NARROW DISTRIBUTION



MOUNTING

SM

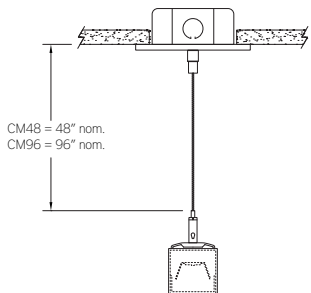
SURFACE MOUNT



- Use appropriate fastener through Ø3/16" holes in housing
- 10' low voltage leads exit out the rear at an end

CM48 and CM96

CABLE MOUNT



Mounting option includes:

- Extruded aluminum cable hanger bracket (can be located at any point along the fixture length)
- Ø 1/16" x 48" (CM48) or 96" (CM96) aircraft cables
- 18 gauge x 60" (CM48) or 108" (CM96) SJT power cable (in coordinating finish)
- Bracket bars
- Ø 5" white canopies
- Ceiling couplers
- Side exit cable grippers