

# BSS220 | **bodhi**

1-25/32" wide LED luminaire with flush lens, remote driver

Project: \_\_\_\_\_ Type: \_\_\_\_\_



## FEATURES

The BSS220 is a low profile, remote driven, linear LED luminaire for general lighting applications. The 2" tall by 1-25/32" wide extruded aluminum housing is capped with a flat lens. 1/4" thick machined aluminum end caps finish off the fixture ends.

## SPECIFICATIONS

Fixture constructed of an extruded aluminum housing, extruded, frosted acrylic lens and machined aluminum end caps

Model variations offered for surface, and cable suspended applications

Standard finishes as shown below

Available in nominal lengths of 2'–8' as single fixtures and continuous runs

Surface and mount fixtures wired with 10' low voltage leads

Included standard remote 120-277V driver offered with 0-10V dimming or non-dim (other dimming driver options available)

Remote mounted emergency battery backup available (ordered separately, consult factory for details)

Standard outputs are 5W and 8W nominal per foot

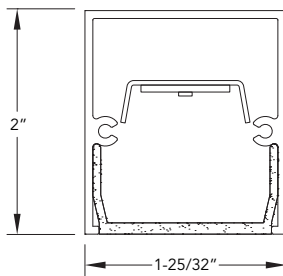
LEDs available in 2700K, 3000K, 3500K, and 4000K, within a 3 step MacAdam ellipse, all with 90+ CRI typical

Life: 50,000 hours L<sub>70</sub>

UL and C-UL listed for dry and damp locations

Limited five year warranty

## SECTION



## PERFORMANCE

NOMINAL LENGTH	WATTS/ft.	TOTAL WATTS	LUMINAIRE LUMENS	EFFICACY
45"	8.4	32.1	2861	89

Note: All data reflects fixtures with 3500K LEDs



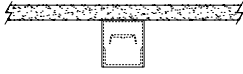
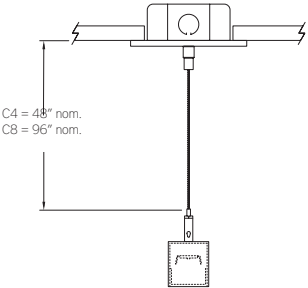
## BSS220 -

NOMINAL FIXTURE LENGTH*	CORRELATED COLOR TEMPERATURE	DRIVER	WATTS / FOOT	MOUNT	RUN CONFIGURATION	FINISH
2: 23" 3: 34" 4: 45" 5: 56" 6: 67" 7: 78" 8: 89"	27: 2700K-90+ CRI 30: 3000K-90+ CRI 35: 3500K-90+ CRI 40: 4000K-90+ CRI	ND: non-dimming <b>[Dimming]</b> D: 0-10V, 1% DTR: triac, 1% DLV: electronic low voltage, 1% HES: Lutron EcoSystem, soft-on/fade-to-black, 1% EL: eldoLED ECOdrive, 0-10V, 1% ES: eldoLED SOLOdrive 0-10V, 0.1% ELD: eldoLED ECOdrive DALI, 1% ESD: eldoLED SOLOdrive DALI, 0.1%	5: 5 W/ft. 8: 8.4 W/ft. CF: consult factory for custom output	SM: surface mount C4: cable mount 4' cable length C8: cable mount 8' cable length CF: consult factory for custom mounting	SN: single ST: starter AD: adder TR: terminator	AW: architectural white (semi-matte) WH: white (semi-gloss) BL: black (semi-matte) MB: matte black ESS: environmental satin silver BZ: bronze PR: primer CF: consult factory for custom finish  SA: satin anodize (may require additional lead time)

\* Actual dimension dependent on run configuration.

Note: Each fixture includes a remote driver matched for fixture length and light output.

MOUNTING

	ORDERING CODE	DESCRIPTION
	SM	<p>SURFACE MOUNT</p> <ul style="list-style-type: none"> <li>• Use appropriate fastener through Ø3/16" holes in housing</li> <li>• 10' low voltage leads exit out the rear at an end</li> </ul>
	C4 and C8	<p>CABLE MOUNT</p> <p>Mounting option includes:</p> <ul style="list-style-type: none"> <li>• Ø 1/16" x 48" (C4) or 96" (C8) aircraft cables</li> <li>• 18 gauge x 60" (C4) or 108" (C8) power cable (in coordinating finish)</li> <li>• Bracket bars</li> <li>• Ø 5" white canopies</li> <li>• Ceiling couplers</li> <li>• Side exit cable grippers</li> </ul>

## LENGTH/MOUNTING DIMENSIONS

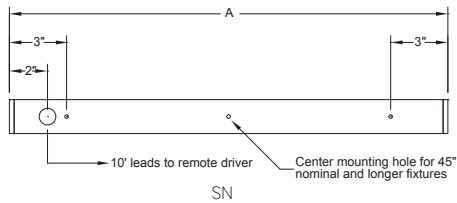
ORDERING CODE	LENGTH A	LENGTH B	LENGTH C	LENGTH D	LENGTH E
2	23"	22-1/2"	22"	17"	19-1/2"
3	34"	33-1/2"	33"	28"	30-1/2"
4	45"	44-1/2"	44"	39"	41-1/2"
5	56"	55-1/2"	55"	50"	52-1/2"
6	67"	66-1/2"	66"	61"	63-1/2"
7	78"	77-1/2"	77"	72"	74-1/2"
8	89"	88-1/2"	88"	83"	85-1/2"

## RUN CONFIGURATION INFORMATION

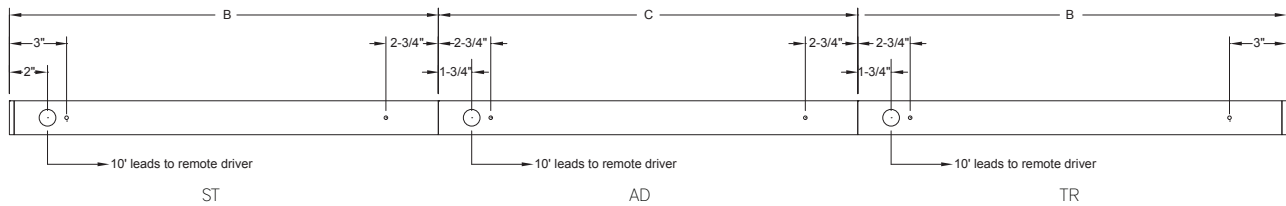
ORDERING CODE	DESCRIPTION
SN	Single
ST	Starter
AD	Adder
TR	Terminator

## RUN INFORMATION

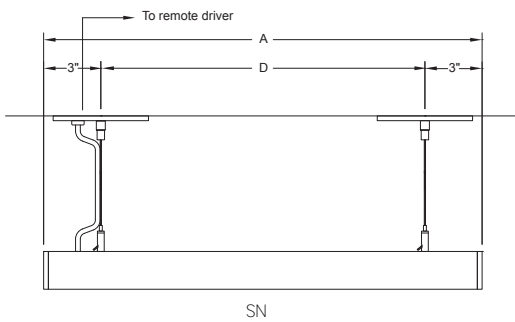
### Back Plan - Surface Mount Single Fixture Option



### Back Plan - Surface Mount Continuous Run Option



### Side View - Cable Mount Single Fixture Option



### Side View - Cable Mount Continuous Run Option

