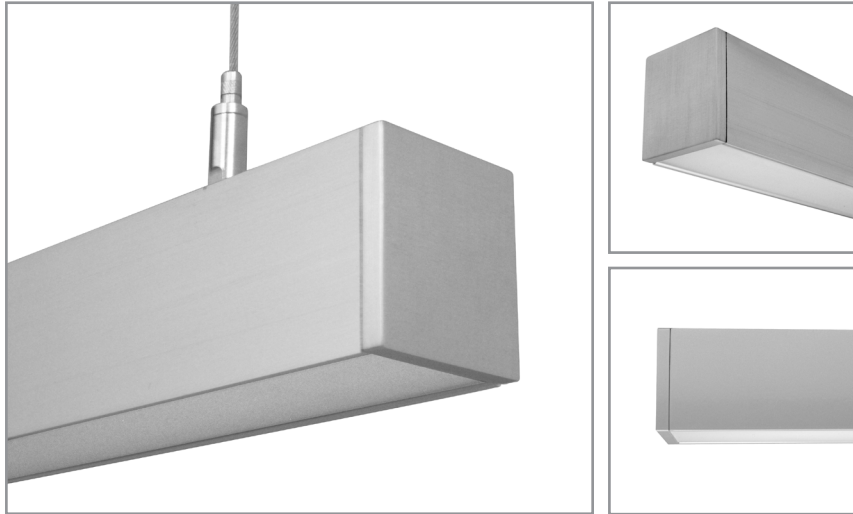


BSS220 | **bodhi**

1-25/32" wide LED luminaire with flush lens, remote driver

Project: _____ Type: _____



FEATURES

The BSS220 is a low profile, remote driven, linear LED luminaire for general lighting applications. The 2" tall by 1-25/32" wide extruded aluminum housing is capped with a flat lens. 1/4" thick machined aluminum end caps finish off the fixture ends.

SPECIFICATIONS

Fixture constructed of an extruded aluminum housing, extruded, frosted acrylic lens and machined aluminum end caps

Model variations offered for surface, and cable suspended applications

Standard finishes as shown below

Available in nominal lengths of 2'-8' as single fixtures and continuous runs

Surface and mount fixtures wired with 10' low voltage leads

Included standard remote 120-277V driver offered with 0-10V dimming or non-dim (other dimming driver options available)

Remote mounted emergency battery backup available (ordered separately, consult factory for details)

Standard outputs are 5W and 8W nominal per foot

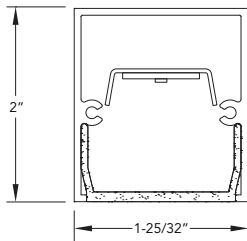
LEDs available in 2700K, 3000K, 3500K, and 4000K, within a 3 step MacAdam ellipse, all with 90+ CRI typical

Life: 50,000 hours L₇₀

UL and CUL listed for dry and damp locations

Limited five year warranty

SECTION



PERFORMANCE

NOMINAL LENGTH	WATTS/ft.	TOTAL WATTS	LUMINAIRE LUMENS	EFFICACY
45"	8.4	32.1	2861	89

*Note: All data reflects fixtures with 3500K LEDs



BSS220 -

NOMINAL FIXTURE LENGTH*

2: 23"
3: 34"
4: 45"
5: 56"
6: 67"
7: 78"
8: 89"

CORRELATED COLOR TEMPERATURE

27: 2700K-90+ CRI
30: 3000K-90+ CRI
35: 3500K-90+ CRI
40: 4000K-90+ CRI

DRIVER

ND: non-dimming
[Dimming]
D: 0-10V, 1%
HES: Lutron EcoSystem, soft-on/fade-to-black, 1%
H2: Lutron Hi-Lume 2-wire forward phase, 1%, (120V ONLY)
E5: Lutron EcoSystem 5-Series, 5%
EL: eldoLED ECOdrive, 0-10V, 1%

WATTS / FOOT

5: 5 W/ft.
8: 8.4 W/ft.
CF: consult factory for custom output

MOUNT

SM: surface mount
C4: cable mount 4' cable length
C8: cable mount 8' cable length
CF: consult factory for custom mounting

RUN CONFIGURATION

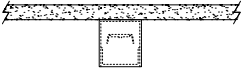
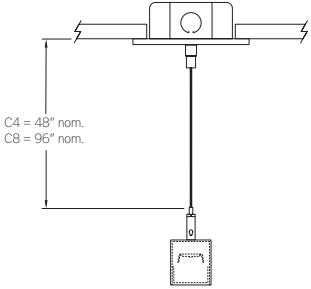
SN: single
ST: starter
AD: adder
TR: terminator

FINISH

AW: architectural white (semi-matte)
WH: white (semi-gloss)
BL: black (semi-matte)
MB: matte black
ESS: environmental satin silver
BZ: bronze
PR: primer
CF: consult factory for custom finish
SA: satin anodize (may require additional lead time)

Note: Each fixture includes a remote driver matched for fixture length and light output
* Actual dimension dependent on run configuration

MOUNTING

	ORDERING CODE	DESCRIPTION
	SM	<p>SURFACE MOUNT</p> <ul style="list-style-type: none"> • Use appropriate fastener through $\varnothing 3/16"$ holes in housing • 10' low voltage leads exit out the rear at an end
 <p>C4 = 48" nom. C8 = 96" nom.</p>	C4 and C8	<p>CABLE MOUNT</p> <p>Mounting option includes:</p> <ul style="list-style-type: none"> • $\varnothing 1/16"$ x 48" (C4) or 96" (C8) aircraft cables • 18 gauge x 60" (C4) or 108" (C8) power cable (in coordinating finish) • Bracket bars • $\varnothing 5"$ white canopies • Ceiling couplers • Side exit cable grippers

LENGTH/MOUNTING DIMENSIONS

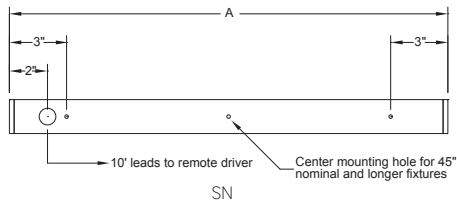
ORDERING CODE	LENGTH A	LENGTH B	LENGTH C	LENGTH D	LENGTH E
2	23"	22-1/2"	22"	17"	19-1/2"
3	34"	33-1/2"	33"	28"	30-1/2"
4	45"	44-1/2"	44"	39"	41-1/2"
5	56"	55-1/2"	55"	50"	52-1/2"
6	67"	66-1/2"	66"	61"	63-1/2"
7	78"	77-1/2"	77"	72"	74-1/2"
8	89"	88-1/2"	88"	83"	85-1/2"

RUN CONFIGURATION INFORMATION

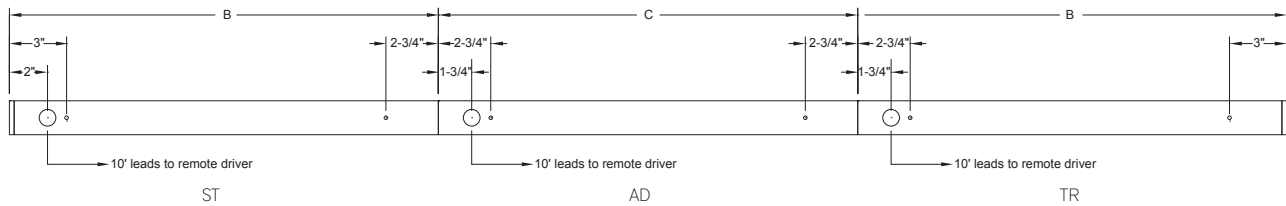
ORDERING CODE	DESCRIPTION
SN	Single
ST	Starter
AD	Adder
TR	Terminator

RUN INFORMATION

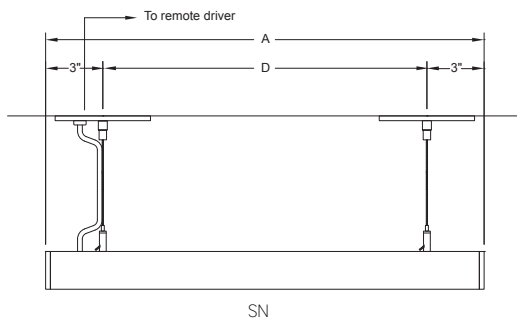
Back Plan - Surface Mount Single Fixture Option



Back Plan - Surface Mount Continuous Run Option



Side View - Cable Mount Single Fixture Option



Side View - Cable Mount Continuous Run Option

