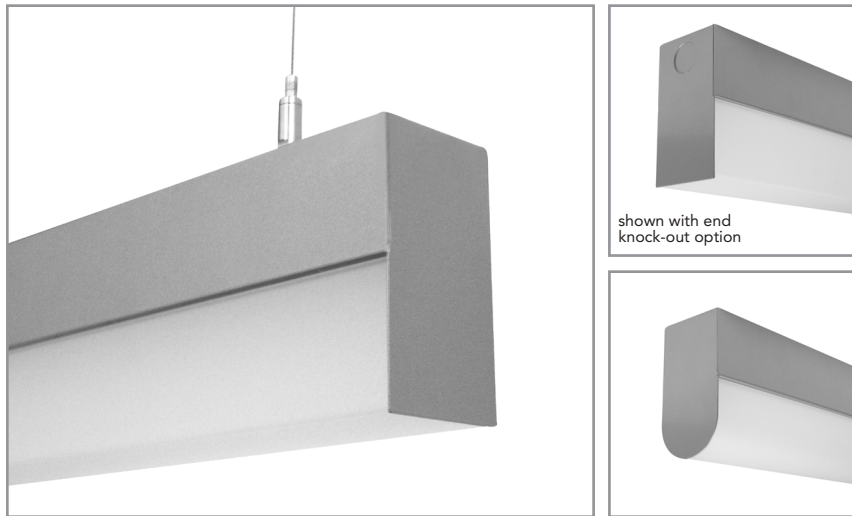


BLT210 | BLT

2-1/8" wide sheet steel LED luminaire with drop lens

Project: _____ Type: _____



FEATURES

The BLT210 luminaire provides high performance with high value. The heavy gauge, sheet formed 2-1/8" wide steel housing is offered with rectangular or round profile frosted acrylic lenses and 90+ CRI LEDs. Multiple driver, light output and mounting options enable this basic linear fixture to provide great versatility in applications. Fixture with certain options available for 3-Day QuickShip.

SPECIFICATIONS

Housing is formed and welded, 20 ga. steel, chemically treated to resist corrosion and enhance paint adhesion

Model variations offered in rectangular or rounded profiles for surface and cable suspended applications

Standard finishes as shown below

Available as single fixtures in nominal lengths of 2'-8'

Surface mount models include knock outs on the rear and surface or suspended models are available with optional end knock outs.

Standard integral 120-277V driver offered with 0-10V dimming or non-dim (other dimming driver options available)

Integral 120-277V emergency battery backup available for 4' nominal non-dim or 0-10V (consult factory for all other lengths/drivers)

Standard light outputs are 600 or 800 lumens per foot

LEDs available in 2700K, 3000K, 3500K, and 4000K, within a 3 step MacAdam ellipse, all with 90+ CRI typical

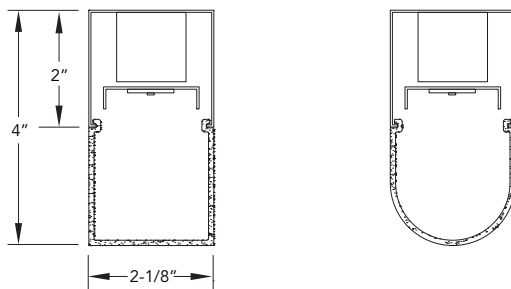
Life: 50,000 hours L₇₀

Passive infrared occupancy sensor available (FOR RECTANGULAR PROFILE ONLY)

Limited five year warranty

UL and C-UL listed for dry and damp locations

SECTION



PERFORMANCE

NOMINAL LENGTH	OUTPUT	LUMENS/ft.	WATTS/ft.	LUMINAIRE LUMENS	EFFICACY (LPW)
4'	L: low	600	5.7	2256	107
	R: regular	800	7.9	2930	101

*Note: All data reflects fixtures with 3500K LEDs and rectangular profile



BLT210 -

<p>FIXTURE LENGTH</p> <p>2: 22-5/16"</p> <p>3: 33-5/16"</p> <p>4: 44-5/16"</p> <p>5: 55-5/16"</p> <p>6: 66-5/16"</p> <p>7: 77-5/16"</p> <p>8: 88-5/16"</p>	<p>CORRELATED COLOR TEMPERATURE</p> <p>27: 2700K-90+ CRI</p> <p>30: 3000K-90+ CRI</p> <p>35: 3500K-90+ CRI</p> <p>40: 4000K-90+ CRI</p>	<p>DRIVER</p> <p>ND: non-dimming [Dimming]</p> <p>D: 0-10V, 1%</p> <p>HES: Lutron EcoSystem, soft-on/fade-to-black, 1%</p> <p>H2: Lutron Hi-lume 2-wire forward phase, 1%, (120V ONLY)</p> <p>E5: Lutron EcoSystem 5-Series, 5%</p> <p>EL: eldoLED ECOdrive, 0-10V, 1%</p>	<p>LIGHT OUTPUT (lumens per foot)</p> <p>L: low - 600</p> <p>R: regular - 800</p> <p>CF: consult factory for custom output</p>	<p>LENS</p> <p>A: rectangular lens profile</p> <p>B: round lens profile</p>	<p>OPTIONS</p> <p>EK: add end knock-outs</p> <p>ED: emergency driver (4' nom. non-dim or 0-10V only)</p> <p>S1: occ sensor pos.1 (see options section)</p> <p>S2: occ sensor pos.2 (see options section)</p> <p>S3: occ sensor pos.3 (see options section)</p>	<p>MOUNT</p> <p>SM: surface mount</p> <p>C4: cable mount 4' cable length</p> <p>C8: cable mount 8' cable length</p> <p>CF: consult factory for custom mounting</p>	<p>FINISH</p> <p>AW: architectural white (semi-matte)</p> <p>WH: white (semi-gloss)</p> <p>BL: black (semi-matte)</p> <p>MB: matte black</p> <p>ESS: environmental satin silver</p> <p>BZ: bronze</p> <p>PR: primer</p> <p>CF: consult factory for custom finish</p>
---	--	---	---	--	---	---	---

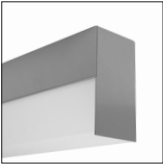
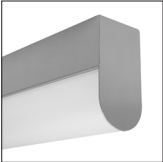


Highlighted fields denote QuickShip Options. See Complete 3-Day QuickShip Terms and Conditions available at www.bartcolighting.com/quickship. Purchase order must reference "QuickShip".

BLT210 | BLT

2-1/8" wide sheet steel LED luminaire with drop lens

LENS

ORDERING CODE	DESCRIPTION	SPECIFICATIONS
	A RECTANGULAR ACRYLIC	Frosted acrylic extrusion with rectangular profile
	B ROUNDED ACRYLIC	Frosted acrylic extrusion with rounded profile

OPTIONS

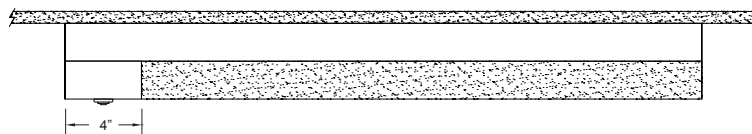
ORDERING CODE	DESCRIPTION	SPECIFICATIONS
EK	ADD END KNOCK OUTS	Ø 7/8" knock outs added at both fixture ends Note: when the S1 option is added, only the end opposite the sensor receives a knock out
ED	EMERGENCY LED DRIVER	<ul style="list-style-type: none"> • Universal 120-277V input voltage emergency driver delivers initial minimum power of 10W for 90 minutes • Available for 4' nominal length non-dim or 0-10V fixture only (consult factory for all other lengths/drivers)

OCCUPANCY SENSOR

Passive infrared occupancy sensor with hold-off daylighting adjustment (10-120 foot candles) and time delay adjustment from 30 seconds to 30 minutes
AVAILABLE FOR RECTANGULAR PROFILE ONLY
Sensor adds 4" to overall fixture length

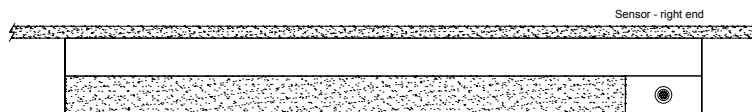
S1 OCCUPANCY SENSOR - POSITION 1

Sensor located on the top at an end



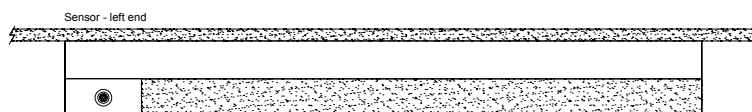
S2 OCCUPANCY SENSOR - POSITION 2

Sensor located on the side at the **right** end



S3 OCCUPANCY SENSOR - POSITION 3

Sensor located on the side at the **left** end



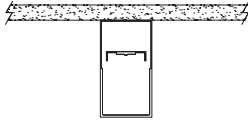
BLT210 | BLT

2-1/8" wide sheet steel LED luminaire with drop lens

MOUNTING

ORDERING CODE

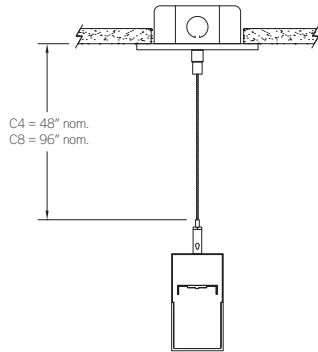
DESCRIPTION



SM

SURFACE MOUNT

Use appropriate fastener through $\varnothing 3/16"$ holes in housing



C4 and C8

CABLE MOUNT

Mounting option includes:

- $\varnothing 1/16"$ x 48" (C4) or 96" (C8) aircraft cables
- 60" (C4) or 108" (C8) power cable in coordinating finish
- Bracket bars
- $\varnothing 5"$ white canopies
- Ceiling couplers
- Side exit cable grippers

C8 mounting option available for QuickShip

BLT210 | BLT

2-1/8" wide sheet steel LED luminaire with drop lens

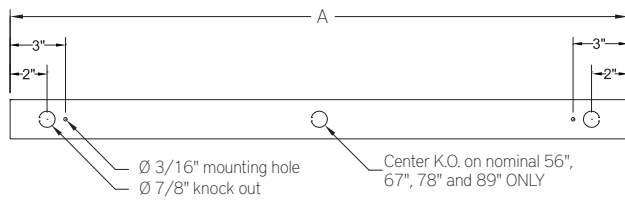
LENGTH / MOUNTING DIMENSIONS

ORDERING CODE	LENGTH A*	LENGTH B*
2	22-5/16"	16-5/16"
3	33-5/16"	27-5/16"
4	44-5/16"	38-5/16"
5	55-5/16"	49-5/16"
6	66-5/16"	60-5/16"
7	77-5/16"	71-5/16"
8	88-5/16"	82-5/16"

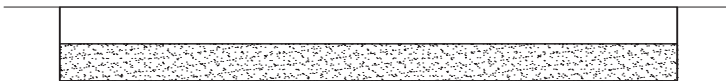
* Add 4" to "A" and "B" dimension when using the S1, S2 or S3 occupancy sensor option

LENGTH INFORMATION

Back Plan - Surface Mount Option



Side View - Surface Mount Option



Side View - Cable Mount Option

