

BLT210 | BLT

2-1/8" wide sheet steel LED luminaire with drop lens

Project: _____ Type: _____



FEATURES

The BLT210 luminaire provides high performance with high value. The heavy gauge, sheet formed 2-1/8" wide steel housing is offered with rectangular or round profile frosted acrylic lenses and 90+ CRI LEDs. Multiple driver, light output and mounting options enable this basic linear fixture to provide great versatility in applications.

Fixture with certain options available for 7-Day QuickShip.

SPECIFICATIONS

Housing is formed and welded, 20 ga. steel, chemically treated to resist corrosion and enhance paint adhesion

Model variations offered in rectangular or rounded profiles for surface and cable suspended applications

Standard finishes as shown below

Available as single fixtures in nominal lengths of 2'-8'

Surface mount models include knock outs on the rear and surface or suspended models are available with optional end knock outs.

Standard integral 120-277V driver offered with 0-10V dimming or non-dim (other dimming driver options available)

Integral 120-277V emergency battery backup available for 4' nominal non-dim or 0-10V (consult factory for all other lengths/drivers)

Standard light outputs are 635, 865 or 1315 lumens per foot

LEDs available in 2700K, 3000K, 3500K, and 4000K, within a 3 step MacAdam ellipse, all with 90+ CRI typical

Life: 50,000 hours L₇₀

Passive infrared occupancy sensor available (FOR RECTANGULAR PROFILE ONLY)

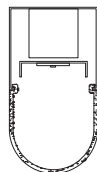
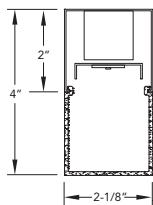
Limited five year warranty

UL and C-UL listed for dry and damp locations

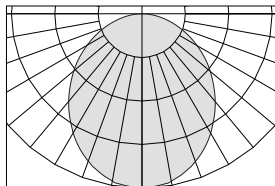


Highlighted fields denote QuickShip Options. See complete 7-Day QuickShip Terms and Conditions available at www.bartcolighting.com/quickship-products/ Purchase order must reference "QuickShip".

SECTION



DISTRIBUTION



PERFORMANCE

Note: All data reflects fixtures with 3500K LEDs and rectangular profile

NOMINAL LENGTH	OUTPUT	LUMENS/ft.	WATTS/ft.	LUMINAIRE LUMENS	EFFICACY (LPW)
4'	L: low	635	5.5	2347	116
	R: regular	865	7.7	3195	113
	H: high	1315	12.5	4852	105

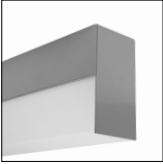



BLT210 -

FIXTURE LENGTH	CORRELATED COLOR TEMPERATURE	DRIVER	LIGHT OUTPUT (lumens per foot)	LENS	OPTIONS	MOUNT	FINISH
2: 22-5/16"	27: 2700K-90+ CRI	ND: non-dimming [Dimming] D: 0-10V, 1% DTR: triac, 1%, (120V ONLY) DLV: electronic low voltage, 1%, (120V ONLY) HES: Lutron EcoSystem, soft-on/fade-to-black, 1% EL: eldoLED ECOdrive 0-10V, 1% ES: eldoLED SOLOdrive 0-10V, 0.1% ELD: eldoLED ECOdrive DALI, 1% ESD: eldoLED SOLOdrive DALI, 0.1%	L: low - 635 R: regular - 865 H: high - 1315 CF: consult factory for custom output	A: rectangular lens profile B: round lens profile	EK: add end knock-outs ED: emergency driver (4' nom. non-dim or 0-10V only) S1A: occ sensor pos.1, 100% - 0% (see options section) S1B: occ sensor pos.1, 100% - 50% (see options section) S2A: occ sensor pos.2, 100% - 0% (see options section) S2B: occ sensor pos.2, 100% - 50% (see options section) S3A: occ sensor pos.3, 100% - 0% (see options section) S3B: occ sensor pos.3, 100% - 50% (see options section)	SM: surface mount WD: wall mount direct light WI: wall mount indirect light C4: cable mount 4' cable length C8: cable mount 8' cable length CF: consult factory for custom mounting	AW: architectural white (semi-matte) WH: white (semi-gloss) BL: black (semi-matte) MB: matte black ESS: environmental satin silver BZ: bronze PR: primer CF: consult factory for custom finish

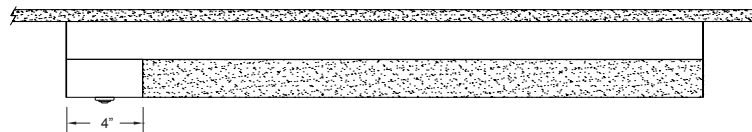
BLT210 | BLT

2-1/8" wide sheet steel LED luminaire with drop lens

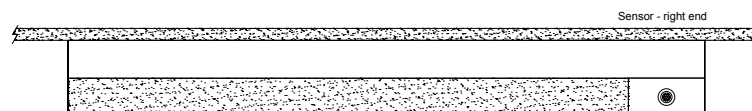
LENS	ORDERING CODE	DESCRIPTION	SPECIFICATIONS
	A	RECTANGULAR ACRYLIC	Frosted acrylic extrusion with rectangular profile
	B	ROUNDED ACRYLIC	Frosted acrylic extrusion with rounded profile

OPTIONS	ORDERING CODE	DESCRIPTION	SPECIFICATIONS
	EK	ADD END KNOCK OUTS	<p>Ø 7/8" knock outs added at both fixture ends</p> <p>Note: when the S1 option is added, only the end opposite the sensor receives a knock out</p>
	ED	EMERGENCY LED DRIVER	<ul style="list-style-type: none"> • Universal 120-277V input voltage emergency driver delivers initial minimum power of 10W for 90 minutes • Available for 4' nominal length non-dim or 0-10V fixture only (consult factory for all other lengths/drivers)

		OCCUPANCY SENSOR	<ul style="list-style-type: none"> • Passive infrared occupancy sensor with hold-off daylighting adjustment (10-120 foot candles) and time delay adjustment from 30 seconds to 30 minutes • AVAILABLE FOR RECTANGULAR PROFILE ONLY • Sensor adds 4" to overall fixture length • Consult factory for custom output
S1A	Occupancy sensor – position 1, 100% – 0%		Sensor located on the top at an end, with 100% – 0% light output setting
S1B	Occupancy sensor – position 1, 100% – 50%		Sensor located on the top at an end, with 100% – 50% light output setting

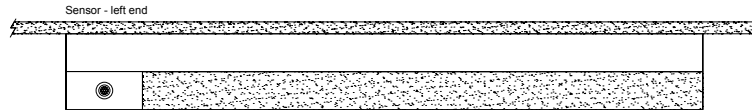


S2A	Occupancy sensor – position 2, 100% – 0%		Sensor located on the side at the right end, with 100% – 0% light output setting
S2B	Occupancy sensor – position 2, 100% – 50%		Sensor located on the side at the right end, with 100% – 50% light output setting



OPTIONS

ORDERING CODE	DESCRIPTION	SPECIFICATIONS
S3A	Occupancy sensor – position 3, 100% – 0%	Sensor located on the side at the left end, with 100% – 0% light output setting
S3B	Occupancy sensor – position 3, 100% – 50%	Sensor located on the side at the left end, with 100% – 50% light output setting



MOUNTING

	ORDERING CODE	DESCRIPTION
	SM	SURFACE MOUNT Use appropriate fastener through $\varnothing 3/16$ " holes in housing
	WD	WALL MOUNT – DIRECT ORIENTATION Mounting option includes: <ul style="list-style-type: none"> • 1-7/8" H x 4-1/2" W sheet aluminum bracket projects the fixture housing 3/4" from the wall surface
	WI	WALL MOUNT – INDIRECT ORIENTATION Mounting option includes: <ul style="list-style-type: none"> • 1-7/8" H x 4-1/2" W sheet aluminum bracket projects the fixture housing 3/4" from the wall surface
	C4 and C8	CABLE MOUNT Mounting option includes: <ul style="list-style-type: none"> • $\varnothing 1/16$" x 48" (C4) or 96" (C8) aircraft cables • 60" (C4) or 108" (C8) power cable in coordinating finish • Bracket bars • $\varnothing 5$" white canopies • Ceiling couplers • Side exit cable grippers

BLT210 | BLT

2-1/8" wide sheet steel LED luminaire with drop lens

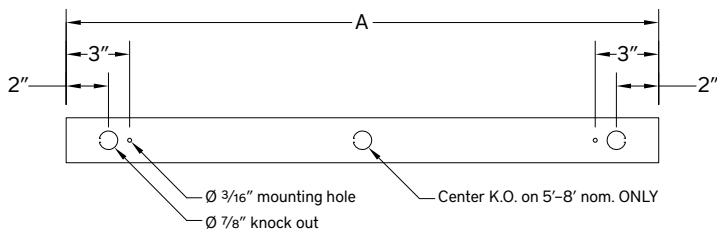
LENGTH / MOUNTING DIMENSIONS

ORDERING CODE	LENGTH A*	LENGTH B*
2	22-5/16"	16-5/16"
3	33-5/16"	27-5/16"
4	44-5/16"	38-5/16"
5	55-5/16"	49-5/16"
6	66-5/16"	60-5/16"
7	77-5/16"	71-5/16"
8	88-5/16"	82-5/16"

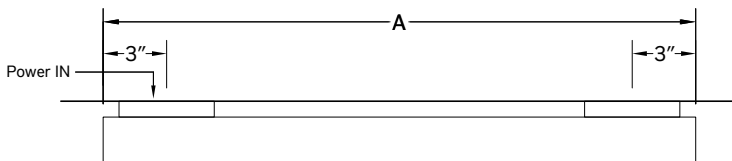
* Add 4" to "A" and "B" dimension when using the S1, S2 or S3 occupancy sensor option

LENGTH INFORMATION

Back Plan - Surface Mount Option



Plan - WI or WD Wall Mount Option



Side View - Cable Mount Option

