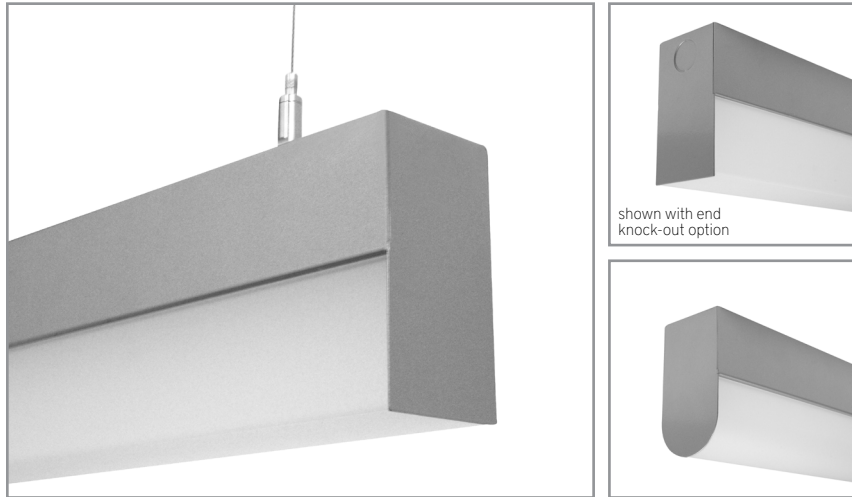


BLT210 | BLT

2-1/8" wide sheet steel LED luminaire with drop lens

Project: _____ Type: _____



FEATURES

The BLT210 luminaire provides high performance with high value. The heavy gauge, sheet formed 2-1/8" wide steel housing is offered with rectangular or round profile frosted acrylic lenses and 90+ CRI LEDs. Multiple driver, light output and mounting options enable this basic linear fixture to provide great versatility in applications.

Fixture with certain options available for 7-Day QuickShip.

SPECIFICATIONS

Housing is formed and welded, 20 ga. steel, chemically treated to resist corrosion and enhance paint adhesion

Model variations offered in rectangular or rounded profiles for surface and cable suspended applications

Standard finishes as shown below

Available as single fixtures in nominal lengths of 2'-8'

Surface mount models include knock outs on the rear and surface or suspended models are available with optional end knock outs.

Standard integral 120-277V driver offered with 0-10V dimming or non-dim (other dimming driver options available)

Integral 120-277V emergency battery backup available for 4' nominal non-dim or 0-10V (consult factory for all other lengths/drivers)

Standard light outputs are 635, 865 or 1315 lumens per foot

LEDs available in 2700K, 3000K, 3500K, and 4000K, within a 3 step MacAdam ellipse, all with 90+ CRI typical

Life: 50,000 hours L₇₀

Passive infrared occupancy sensor available (FOR RECTANGULAR PROFILE ONLY)

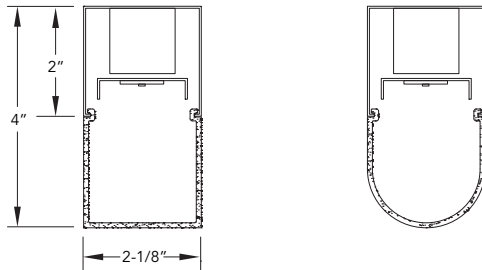
Limited five year warranty

UL and C-UL listed for dry and damp locations



Highlighted fields denote QuickShip Options. See complete 7-Day QuickShip Terms and Conditions available at www.bartcolighting.com/quickship-products/ Purchase order must reference "QuickShip".

SECTION



PERFORMANCE

Note: All data reflects fixtures with 3500K LEDs and rectangular profile

| NOMINAL LENGTH | OUTPUT | LUMENS/ft. | WATTS/ft. | LUMINAIRE LUMENS | EFFICACY (LPW) |
|----------------|------------|------------|-----------|------------------|----------------|
| 4' | L: low | 635 | 5.5 | 2347 | 116 |
| | R: regular | 865 | 7.7 | 3195 | 113 |
| | H: high | 1315 | 12.5 | 4852 | 105 |

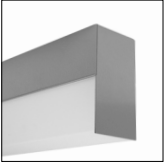
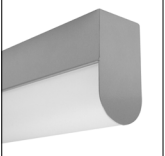


BLT210 -

| FIXTURE LENGTH | CORRELATED COLOR TEMPERATURE | DRIVER | LIGHT OUTPUT (lumens per foot) | LENS | OPTIONS | MOUNT | FINISH |
|----------------|------------------------------|--|---------------------------------------|-----------------------------|---|---|---------------------------------------|
| 2: 22-5/16" | 27: 2700K-90+ CRI | ND: non-dimming | L: low - 635 | A: rectangular lens profile | EK: add end knock-outs | SM: surface mount | AW: architectural white (semi-matte) |
| 3: 33-5/16" | 30: 3000K-90+ CRI | [Dimming] | R: regular - 865 | B: round lens profile | ED: emergency driver (4' nom. non-dim or 0-10V only) | WD: wall mount direct light | WH: white (semi-gloss) |
| 4: 44-5/16" | 35: 3500K-90+ CRI | D: 0-10V, 1% | H: high - 1315 | | S1A: occ sensor pos.1, 100% - 0% (see options section) | WI: wall mount indirect light | BL: black (semi-matte) |
| 5: 55-5/16" | 40: 4000K-90+ CRI | DTR: triac, 1%, (120V ONLY) | CF: consult factory for custom output | | S1B: occ sensor pos.1, 100% - 50% (see options section) | C4: cable mount 4' cable length | MB: matte black |
| 6: 66-5/16" | | DLV: electronic low voltage, 1%, (120V ONLY) | | | S2A: occ sensor pos.2, 100% - 0% (see options section) | C8: cable mount 8' cable length | ESS: environmental satin silver |
| 7: 77-5/16" | | HES: Lutron EcoSystem, soft-on/fade-to-black, 1% | | | S2B: occ sensor pos.2, 100% - 50% (see options section) | CF: consult factory for custom mounting | BZ: bronze |
| 8: 88-5/16" | | EL: eldoLED ECOdrive 0-10V, 1% | | | S3A: occ sensor pos.3, 100% - 0% (see options section) | | PR: primer |
| | | ES: eldoLED SOLOdrive 0-10V, 0.1% | | | S3B: occ sensor pos.3, 100% - 50% (see options section) | | CF: consult factory for custom finish |
| | | ELD: eldoLED ECOdrive DALI, 1% | | | | | |
| | | ESD: eldoLED SOLOdrive DALI, 0.1% | | | | | |

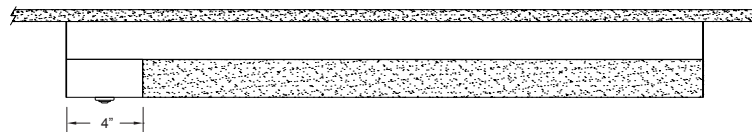
BLT210 | BLT

2-1/8" wide sheet steel LED luminaire with drop lens

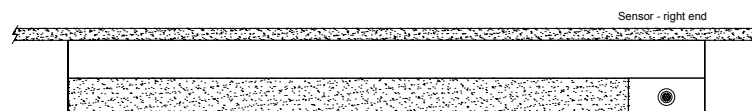
| LENS | ORDERING CODE | DESCRIPTION | SPECIFICATIONS |
|---|---------------|---------------------|--|
|  | A | RECTANGULAR ACRYLIC | Frosted acrylic extrusion with rectangular profile |
|  | B | ROUNDED ACRYLIC | Frosted acrylic extrusion with rounded profile |

| OPTIONS | ORDERING CODE | DESCRIPTION | SPECIFICATIONS |
|---------|---------------|----------------------|---|
| | EK | ADD END KNOCK OUTS | <p>Ø 7/8" knock outs added at both fixture ends</p> <p>Note: when the S1 option is added, only the end opposite the sensor receives a knock out</p> |
| | ED | EMERGENCY LED DRIVER | <ul style="list-style-type: none"> • Universal 120-277V input voltage emergency driver delivers initial minimum power of 10W for 90 minutes • Available for 4' nominal length non-dim or 0-10V fixture only (consult factory for all other lengths/drivers) |

| | | | |
|-----|---|------------------|---|
| | | OCCUPANCY SENSOR | <ul style="list-style-type: none"> • Passive infrared occupancy sensor with hold-off daylighting adjustment (10-120 foot candles) and time delay adjustment from 30 seconds to 30 minutes • AVAILABLE FOR RECTANGULAR PROFILE ONLY • Sensor adds 4" to overall fixture length • Consult factory for custom output |
| S1A | Occupancy sensor – position 1, 100% – 0% | | Sensor located on the top at an end, with 100% – 0% light output setting |
| S1B | Occupancy sensor – position 1, 100% – 50% | | Sensor located on the top at an end, with 100% – 50% light output setting |



| | | | |
|-----|---|--|--|
| S2A | Occupancy sensor – position 2, 100% – 0% | | Sensor located on the side at the right end, with 100% – 0% light output setting |
| S2B | Occupancy sensor – position 2, 100% – 50% | | Sensor located on the side at the right end, with 100% – 50% light output setting |

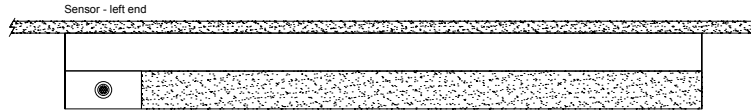


BLT210 | BLT

2-1/8" wide sheet steel LED luminaire with drop lens

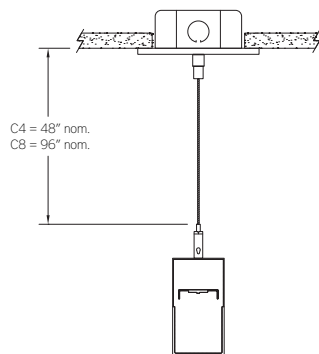
OPTIONS

| ORDERING CODE | DESCRIPTION | SPECIFICATIONS |
|---------------|---|---|
| S3A | Occupancy sensor – position 3, 100% – 0% | Sensor located on the side at the left end, with 100% – 0% light output setting |
| S3B | Occupancy sensor – position 3, 100% – 50% | Sensor located on the side at the left end, with 100% – 50% light output setting |



MOUNTING

| ORDERING CODE | DESCRIPTION |
|---------------|--|
| SM | SURFACE MOUNT Use appropriate fastener through $\varnothing 3/16"$ holes in housing |
| WD | WALL MOUNT – DIRECT ORIENTATION • 1-7/8" H x 2-1/2" W aluminum bracket projects the fixture housing 3/4" from the wall surface |
| WI | WALL MOUNT – INDIRECT ORIENTATION • 1-7/8" H x 2-1/2" W aluminum bracket projects the fixture housing 3/4" from the wall surface |



C4 and C8

CABLE MOUNT

Mounting option includes:

- $\varnothing 1/16"$ x 48" (C4) or 96" (C8) aircraft cables
- 60" (C4) or 108" (C8) power cable in coordinating finish
- Bracket bars
- $\varnothing 5"$ white canopies
- Ceiling couplers
- Side exit cable grippers

BLT210 | BLT

2-1/8" wide sheet steel LED luminaire with drop lens

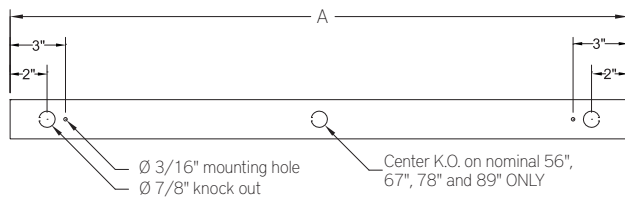
LENGTH / MOUNTING DIMENSIONS

| ORDERING CODE | LENGTH A* | LENGTH B* |
|---------------|-----------|-----------|
| 2 | 22-5/16" | 16-5/16" |
| 3 | 33-5/16" | 27-5/16" |
| 4 | 44-5/16" | 38-5/16" |
| 5 | 55-5/16" | 49-5/16" |
| 6 | 66-5/16" | 60-5/16" |
| 7 | 77-5/16" | 71-5/16" |
| 8 | 88-5/16" | 82-5/16" |

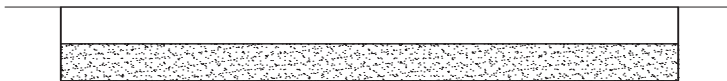
* Add 4" to "A" and "B" dimension when using the S1, S2 or S3 occupancy sensor option

LENGTH INFORMATION

Back Plan - Surface Mount Option



Side View - Surface Mount Option



Side View - Cable Mount Option

