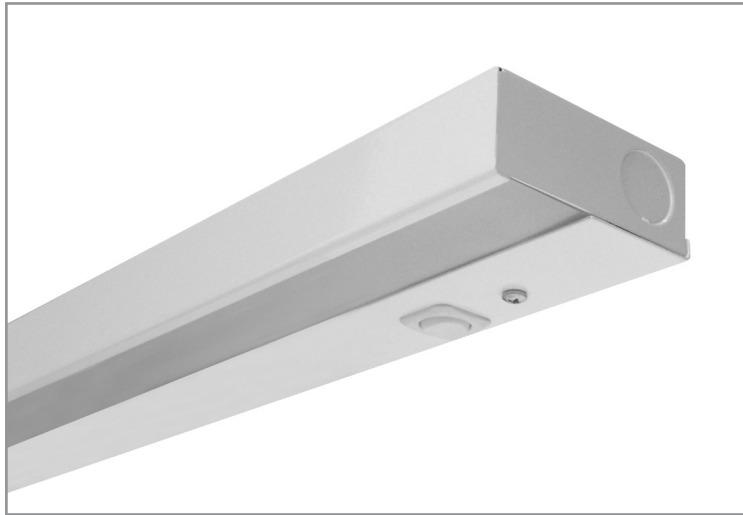


BSS305 | GENERAL INFORMATION

Under cabinet LED luminaire



Project: _____ Type: _____



FEATURES

Quality LED illumination and several control options make the BSS305 luminaire an ideal task light. The robust, 23"-56" nominal length fixtures feature an acrylic lens, multiple light output choices, dimming driver capability and an occupancy sensor option.

SPECIFICATIONS

Fully assembled housing is formed and welded, 20 ga. steel, chemically treated to resist corrosion and enhance paint adhesion

Standard finishes as shown below

Knock-outs accept standard electrical fittings (by others)

Available in nominal lengths of 2' - 5'

Includes frosted acrylic lay in lens

Standard integral 120-277V driver offered with 0-10V dimming or non-dim (other dimming driver options available)

Options include 120V or 277V on/off rocker switch and passive infrared occupancy sensor

Standard outputs are 495 and 640 lumens per foot

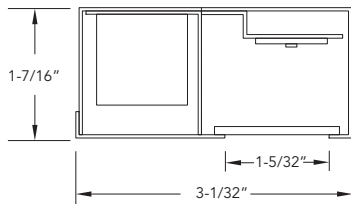
LEDs available in 2700K, 3000K, 3500K, and 4000K, within a 3 step MacAdam ellipse, all with 90+ CRI typical

Life: 50,000 hours L₇₀

Limited five year warranty

UL and C-UL listed for dry and damp locations

SECTION



PERFORMANCE

NOMINAL LENGTH	OUTPUT	LUMENS/ft.	WATTS/ft.	LUMINAIRE LUMENS	EFFICACY
4'	L: low	495	6.4	1817	77
	R: regular	640	8.8	2360	73

*Note: All data reflects fixtures with 3500K LEDs; Max input wattage 26



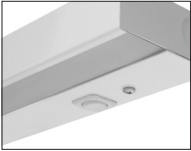
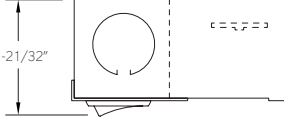

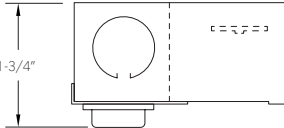

BSS305 -

FIXTURE LENGTH	CORRELATED COLOR TEMPERATURE	DRIVER	LIGHT OUTPUT (lumens per foot)	LENS	OPTIONS	FINISH
2: 22-3/16"	27: 2700K-90+ CRI	ND: non-dimming [Dimming]	L: low - 495	F: frosted acrylic	SW1: rocker switch 120V	AW: architectural white (semi-matte)
3: 33-3/16"	30: 3000K-90+ CRI	DM: 0-10V, 1%	R: regular - 640		SW2: rocker switch 277V	WH: white (semi-gloss)
4: 44-3/16"	35: 3500K-90+ CRI	HES: Lutron EcoSystem, soft-on/fade-to-black, 1%	CF: consult factory for custom wattage		OC: occupancy sensor	BL: black (semi-matte)
5: 55-3/16"	40: 4000K-90+ CRI	H2: Lutron Hi-lume 2-wire forward phase, 1%, (120V ONLY)				MB: matte black
		E5: Lutron EcoSystem 5-Series, 5%				ESS: environmental satin silver
		EL: eldoLED ECOdrive 0-10V, 1%				BZ: bronze
						PR: primer
						CF: consult factory for custom finish

BSS305 | GENERAL INFORMATION

Under cabinet LED luminaire

OPTIONS

	ORDERING CODE	DESCRIPTION	
	SW1	ROCKER SWITCH 120V On/off 120V, 10 Amp rocker switch in white or black finish (dependent on fixture finish)	
	SW2	ROCKER SWITCH 277V On/off 277V, 20 Amp rocker switch in black finish only	
	OC	OCCUPANCY SENSOR Passive infrared occupancy sensor with hold-off day-lighting adjustment (10-120 foot candles) and time delay adjustment from 30 seconds to 30 minutes	