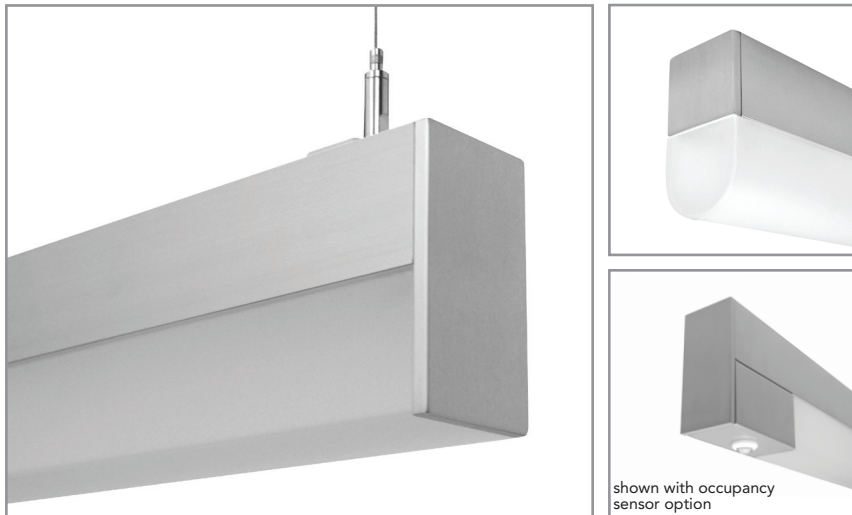


BSS210 | GENERAL INFORMATION



Rectilinear LED fixture with drop down lens

Project: _____ Type: _____



FEATURES

The BSS210 is a linear LED luminaire for general lighting applications. The 2-1/8" wide extruded aluminum housing is capped by a 2" tall, rectangular or rounded profile frosted acrylic lens that produces a wide distribution of diffuse illumination. 1/4" thick machined aluminum end caps finish off the fixture ends.

SPECIFICATIONS

Fixture constructed of an extruded aluminum, extruded, frosted acrylic lens and machined aluminum end caps

Model variations offered in rectangular or rounded profiles for surface, wall mount and cable suspended mounting with solid or luminous end options.

Field adjustable cable hangers can be located at nearly any point along the fixture length

Standard finishes as shown below

Available in nominal lengths of 2'-8' single fixtures and continuous runs

Basic continuous run fixtures provided with 18 ga. wiring harness for 6 Amp maximum load (consult factory for runs requiring multiple circuits, sensor integration, etc.)

Standard integral 120-277V driver offered with 0-10V dimming or non-dim (other dimming driver options available)

Integral 120-277V emergency battery backup available for 4' nominal non-dim or 0-10V (consult factory for all other lengths/drivers)

Standard light outputs are 600 or 1000 lumens per foot

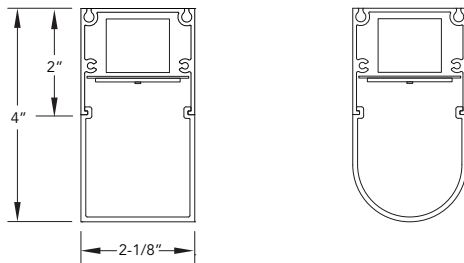
LEDs available in 3000K, 3500K, 4000K and 5000K, within a 3 step MacAdam ellipse, all with 80+ CRI typical

Life: 50,000 hours L₇₀

Passive infrared occupancy sensor available (FOR RECTANGULAR PROFILE ONLY)

Limited five year warranty

SECTION



PERFORMANCE

NOMINAL LENGTH	OUTPUT	LUMENS/ft.	WATTS/ft.	LUMINAIRE LUMENS	EFFICACY (LPW)
4'	L: low	600	5.0	2244	120
	R: regular	1000	8.5	3736	118

Note: All data reflects fixtures with 3500K LEDs and rectangular profile and solid ends



BSS210 -							
NOMINAL FIXTURE LENGTH**	CORRELATED COLOR TEMPERATURE	DRIVER	LENS	OPTIONS	MOUNT	RUN CONFIGURATION	FINISH
2: 22-3/4"	30: 3000K - 80+ CRI	[Non-Dimming] leave blank for non-dimming	A: rectangular profile - solid end	ED: emergency driver (4' non-dim or 0-10V only)	SM: surface mount	SN: single	AW: architectural white (semi-matte)
3: 33-3/4"	35: 3500K - 80+ CRI	[Dimming] D: 0-10V, 1%	B: rectangular profile - luminous end	S1: occ sensor pos.1 (see options section)	WD: wall mount - direct	ST: starter	WH: white (semi-gloss)
4: 44-3/4"	40: 4000K - 80+ CRI	HE: Lutron EcoSystem, 1%	C: rounded profile - solid end	S2: occ sensor pos.2 (see options section)	C4: cable mount 4' cable length	AD: adder	BL: black (semi-matte)
5: 55-3/4"	50: 5000K - 80+ CRI	HES: Lutron EcoSystem, soft-on/fade-to-black, 1%	D: rounded profile - luminous end	S3: occ sensor pos.3 (see options section)	C8: cable mount 8' cable length	TR: terminator	MB: matte black
6: 66-3/4"		H2: Lutron Hi-lume 2-wire forward phase, 1%, (120V ONLY)			CF: consult factory for custom mounting		ESS: environmental satin silver
7: 77-3/4"		H3: Lutron Hi-lume, 3-wire, 1%	LIGHT OUTPUT (lumens per foot)				PT: platinum*
8: 88-3/4"		E5: Lutron EcoSystem 5-Series, 5%	L: low - 600				BZ: bronze
		EL: eldoLED ECOdrive 0-10V, 1%	R: regular - 1000				PR: primer
			CF: consult factory for custom output				CF: consult factory for custom finish

* A standard finish requiring a 2 step coating process, premium will apply

** Actual dimension dependent on run configuration and sensor option

LENS

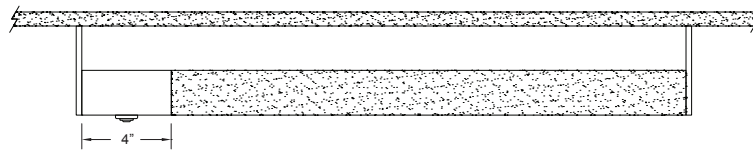
	ORDERING CODE	DESCRIPTION	SPECIFICATIONS
	A	RECTANGULAR SOLID END	Rectangular profile with full height aluminum end cap
	B	RECTANGULAR LUMINOUS END	Rectangular profile with aluminum end cap and frosted acrylic lens end
	C	ROUNDED SOLID END	Rounded profile with full height aluminum end cap
	D	ROUNDED LUMINOUS END	Rounded profile with aluminum end cap and frosted acrylic lens end

OPTIONS

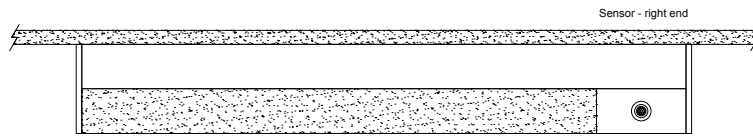
ORDERING CODE	DESCRIPTION	SPECIFICATIONS
ED	EMERGENCY LED DRIVER	<ul style="list-style-type: none"> • Universal 120-277V input voltage emergency driver delivers initial minimum power of 10W for 90 minutes • Available for 4' nominal length non-dim or 0-10V fixture only (consult factory for all other lengths/drivers)

OPTIONS

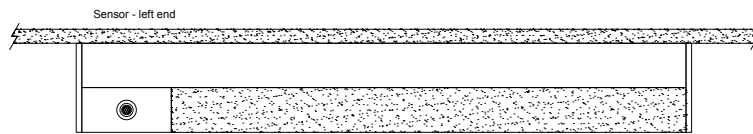
ORDERING CODE	DESCRIPTION	SPECIFICATIONS
	OCCUPANCY SENSOR	Passive infrared occupancy sensor with hold-off daylighting adjustment (10-120 foot candles) and time delay adjustment from 30 seconds to 30 minutes AVAILABLE FOR RECTANGULAR PROFILE ONLY Sensor adds 4" to overall fixture length
S1	OCCUPANCY SENSOR - POSITION 1	Sensor located on the top at an end



S2	OCCUPANCY SENSOR - POSITION 2	Sensor located on the side at the right end
----	-------------------------------	--



S3	OCCUPANCY SENSOR - POSITION 3	Sensor located on the side at the left end
----	-------------------------------	---



MOUNTING

	ORDERING CODE	DESCRIPTION
	SM	SURFACE MOUNT Use appropriate fastener through $\varnothing 3/16"$ holes in housing
	WD	WALL MOUNT - DIRECT ORIENTATION Mounting option includes: <ul style="list-style-type: none"> • 1-7/8" H x 2-1/2" W aluminum bracket projects the fixture housing 3/4" from the wall surface
	C4 and C8	CABLE MOUNT Mounting option includes: <ul style="list-style-type: none"> • $\varnothing 1/16"$ x 48" (C4) or 96" (C8) aircraft cables • 60" (C4) or 108" (C8) power cable (in coordinating finish) • Bracket bars • $\varnothing 5"$ white canopies • Ceiling couplers • Side exit cable grippers