

patent no. US 6,652,119 B1



MiT8

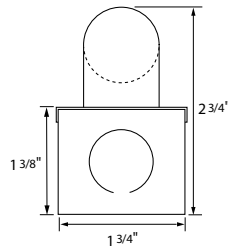
type:

LINEAR T8 FLUORESCENT

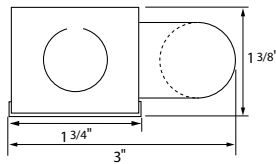
low profile T8 fluorescent fixture

- SPECIFICATIONS |**
- Fully assembled housing is formed and welded, 20 ga. steel, chemically treated to resist corrosion and enhance paint adhesion
 - Standard finish is high reflectance white powder coat, applied post production
 - Knock-outs accept standard electrical fittings (by others)
 - Rotational locking lamp holders
 - Available for one or two T8 17W, 25W, 32W or 40W linear fluorescent lamps
 - Standard Universal voltage electronic high power factor ballast is pre-wired to the lamp holders
 - Dimming and emergency battery back up options available (consult factory for availability and system compatibility)
 - UL and ULC listed for dry and damp locations
 - IBEW

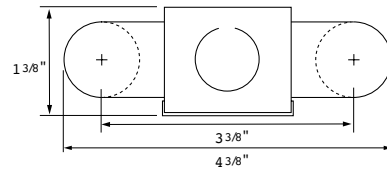
1T



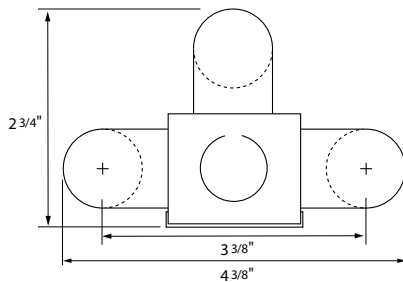
1S



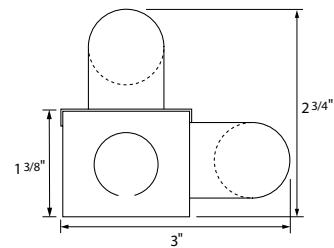
2S



3S



RA



SPECIFICATION / ORDER FORMAT					DIMENSIONAL INFO.
model no.	lamp position	wattage - lamp	voltage	options	overall length
MiT8	-1T	17 - 17w T8	/UNV	Dimming - (consult factory)	24"
	-1S	25 - 25w T8		/EB - emergency ballast (consult factory)	36"
	-2S	32 - 32w T8		/DL - damp location	48"
	-3S	40 - 40w T8		/CU - custom finish (consult factory)	60"
	-RA				

LENSES | Two-piece system comprised of polycarbonate channel and striated snap-on cover



U8LNP Clear fine prismatic acrylic lens with mounting clips (sold by the foot) ___ft.
 U8LNCF Frosted acrylic lens with mounting clips (sold by the foot) ___ft.

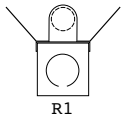
TUBE GUARD |

TG Tube Guard (sold by the foot) ___ft.

CABLE KIT |

SEE BARTCO **CB8** FIXTURE

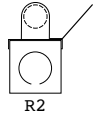
REFLECTORS | 20 ga. steel construction, white powder coat finish (consult factory for optional reflector materials and finishes)



R1

SYMMETRICAL
 MiT8-1T-R1-17
 MiT8-1T-R1-25
 MiT8-1T-R1-32
 MiT8-1T-R1-40

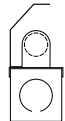
for fixture model
 MiT8-1T17
 MiT8-1T25
 MiT8-1T32
 MiT8-1T40



R2

ASYMMETRICAL
 MiT8-1T-R2-17
 MiT8-1T-R2-25
 MiT8-1T-R2-32
 MiT8-1T-R2-40

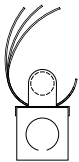
MiT8-1T17
 MiT8-1T25
 MiT8-1T32
 MiT8-1T40



R3

INSIDE ASYMMETRICAL
 MiT8-1T-R3-17
 MiT8-1T-R3-25
 MiT8-1T-R3-32
 MiT8-1T-R3-40

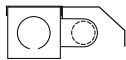
MiT8-1T17
 MiT8-1T25
 MiT8-1T32
 MiT8-1T40



RE

ELLIPTICAL
 MiT8-1T-RE-17
 MiT8-1T-RE-25
 MiT8-1T-RE-32
 MiT8-1T-RE-40

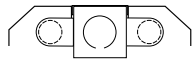
MiT5-1T17
 MiT5-1T25
 MiT5-1T32
 MiT5-1T40



R4

MiT8-1S-R4-17
 MiT8-1S-R4-25
 MiT8-1S-R4-32
 MiT8-1S-R4-40

MiT8-1S17
 MiT8-1S25
 MiT8-1S32
 MiT8-1S40



R5

MiT8-2S-R5-17
 MiT8-2S-R5-25
 MiT8-2S-R5-32
 MiT8-2S-R5-40

MiT8-2S17
 MiT8-2S25
 MiT8-2S32
 MiT8-2S40