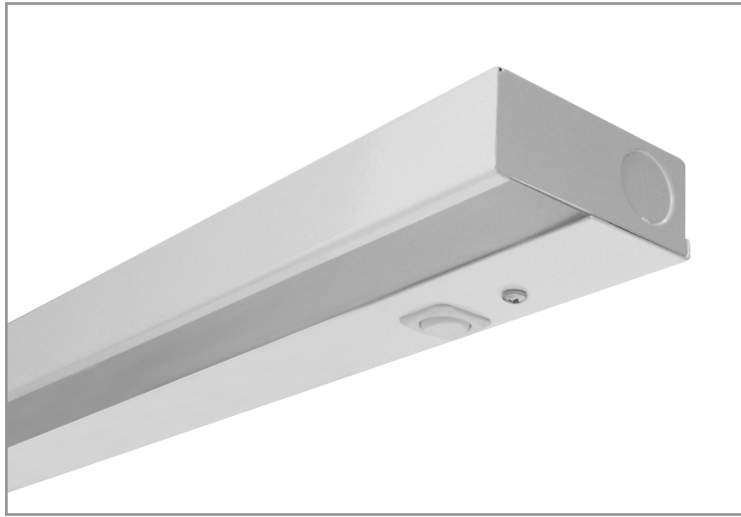


# MiT5-UC | GENERAL INFORMATION



T5 under cabinet fixture

Project: \_\_\_\_\_ Type: \_\_\_\_\_



## FEATURES

The MiT5-UC is a versatile, low profile under cabinet fixture. The heavy gauge, steel housing is available in several lengths and finishes with multiple lens and ballast choices. Additional options include rocker switches and integrated passive infrared occupancy sensor.

## SPECIFICATIONS

Housing is formed and welded, 20 ga. steel, chemically treated to resist corrosion and enhance paint adhesion

Standard finishes include Fluoroscope White (semi-matte), white (semi-gloss), black (semi-matte), matte black, silver, platinum\*, bronze and primer powder coat, applied post production (consult factory for custom finishes)

Knock-outs accept standard electrical fittings (by others)

Acrylic, lay in lens options include frosted, micro linear prismatic, clear or white opal

Available for T5 14W, 21W, 28W, 35W and high output 24W, 39W, 54W, 80W linear fluorescent lamps

Standard ballast is specification grade 120V-277V program start (consult factory for other voltage options)

Dimming, specialized ballast factor, and emergency ballast options available (refer to supplemental ballast details sheet for availability)

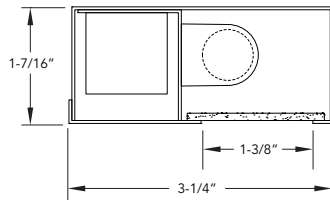
Options include 120V or 277V on/off rocker switch, passive infrared occupancy sensor, receptacle and 3' power cord

UL and C-UL listed for dry and damp locations

IBEW manufactured and assembled

Made in U.S.A.

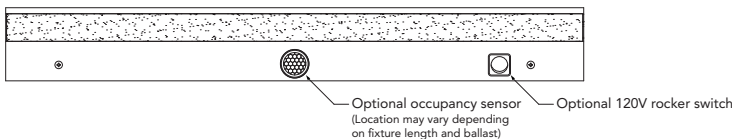
## PROFILE



## FRONT



## PLAN



## MiT5-UC +

WATTS	VOLTAGE	BALLAST	LENS	OPTIONS	FINISH
14: 14W 22-1/2"	120: 120V	<b>[Non-Dimming]</b>	F: frosted acrylic	SW1: rocker switch 120V	FW: Fluoroscope white (semi-matte)
21: 21W 34-5/16"	277: 277V	PRS: program rapid start	P: micro linear prismatic acrylic	SW2: rocker switch 277V	WH: white (semi-gloss)
28: 28W 46-1/16"	CF: consult factory for specialized voltage	<b>[Dimming]</b>	C: clear acrylic	OC: occupancy sensor	BL: black (semi-matte)
35: 35W 57-15/16"		ESYS: Lutron EcoSystem	W: white acrylic	RE: receptacle (consult factory)	MB: matte black
24: 24W HO 22-1/2"		EHD: Lutron EcoSystem H		P3: 3' power cord (consult factory)	SL: silver
39: 39W HO 34-5/16"		HLM: Lutron Hi-Lume			PT: platinum*
54: 54W HO 46-1/16"		H300: Lutron Hi-Lume 3D			BZ: bronze
80: 80W HO 57-15/16"		PHO: Sylvania Helios			PR: primer
		DALI: Dali T5 (consult factory)			CF: consult factory for custom finish
		<b>[Custom Performance]</b>			
		PH: 1.15BF program start			
		PN85: 0.85BF program start			
		PN90: 0.90BF program start			
		PN95: 0.95BF program start			
		<b>[Emergency]</b>			
		L55: Bodine LP5500			
		L60: Bodine LP600			

\* A standard finish requiring a two step coating process, premium will apply.

OPTIONS

	ORDERING CODE	DESCRIPTION	
	SW1	<p>ROCKER SWITCH 120V</p> <p>On/off 120V, 10 Amp rocker switch in white or black finish (dependent on fixture finish)</p>	
	SW2	<p>ROCKER SWITCH 277V</p> <p>On/off 277V, 20 Amp rocker switch in black finish only</p>	
	OC	<p>OCCUPANCY SENSOR</p> <p>Passive infrared occupancy sensor with hold-off day-lighting adjustment (10-120 foot candles) and time delay adjustment from 30 seconds to 30 minutes</p>	
	RE	<p>RECEPTICAL</p> <p>NEMA 5-15R 15 Amp grounded receptacle (consult factory for location and finish details)</p>	
	P3	<p>POWER CORD</p> <p>3' SJT grounded power cord (consult factory for location and finish details)</p>	