



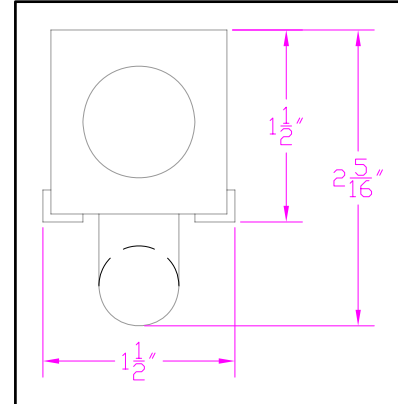
**IES INDOOR REPORT  
PHOTOMETRIC FILENAME : LLI020716B.IES**

**DESCRIPTION INFORMATION (From Photometric File)**

IESNA:LM-63-2002  
[TEST] LLI 0207-16B  
[TESTLAB] LIGHT LABORATORY INC  
[ISSUE DATE] 3/1/2007  
[MANUFAC] BARTCO LIGHTING  
[LUMCAT] MIT5-1T-28/UNV  
[LUMINAIRE] 46-1/8"L. X 1-1/2"W. X 1-1/2"H. STRIP  
[MORE] WHITE PAINTED FIXTURE  
[BALLASTCAT] ADVANCE ICN-132-MC  
[BALLAST] 120 TO 277V 50/60Hz ELECTRONIC  
[LAMPPOSITION] 0,90  
[LAMP CAT] SYLVANIA FP28/841/ECO  
[\_LAMPLUM] 2900  
[\_INPUT] 120VAC, 35.27W

**CHARACTERISTICS**

Total Rated Lamp Lumens	2900
Total Luminaire Efficiency	93.6 %
CIE Type	Semi-Direct
Spacing Criteria (0-180)	1.30
Spacing Criteria (90-270)	1.62
Spacing Criteria (Diagonal)	1.66
Basic Luminous Shape	Hor. Cylinder Along Length
Luminous Length (0-180)	3.77 ft
Luminous Width (90-270)	0.05 ft (Diameter)
Luminous Height	0.05 ft (Diameter)



**LUMINANCE DATA (cd/sq.m)**

Angle In Degrees	Average 0-Deg	Average 45-Deg	Average 90-Deg
45	2222953	30755	25159
55	1470928	28959	24874
65	1130054	26695	23790
75	413916	23564	21964
85	1171032	18845	19682

NOTE: ALL TESTS ASSUME BALLAST FACTOR (BF) = 1.0 UNLESS STATED.  
IF TEST OR OTHER BALLAST USED HAS A BF OTHER THAN 1.0, ALL LUMEN, CANDELA, AND LUMINANCE VALUES SHOULD BE MULTIPLIED BY THE BF, CU, EFFICIENCY AND % FLUX VALUES REMAIN AS LISTED.  
TOTAL WATTS VALUE APPLIES ONLY TO TESTED BALLAST.

CANDELA TABULATION

	<u>0</u>	<u>22.5</u>	<u>45</u>	<u>67.5</u>	<u>90</u>
<b>0</b>	417	417	417	417	417
<b>5</b>	439	439	426	409	404
<b>15</b>	423	429	429	421	420
<b>25</b>	389	402	419	428	431
<b>35</b>	345	367	403	430	440
<b>45</b>	287	322	384	427	441
<b>55</b>	220	273	362	418	436
<b>65</b>	187	226	334	395	417
<b>75</b>	73	140	295	359	385
<b>85</b>	213	83	236	324	345
<b>90</b>	208	90	227	313	334
<b>95</b>	207	91	228	311	332
<b>105</b>	0	79	220	301	319
<b>115</b>	0	27	130	234	261
<b>125</b>	0	0	102	148	173
<b>135</b>	0	0	17	77	88
<b>145</b>	0	0	0	6	16
<b>155</b>	0	0	0	0	0
<b>165</b>	0	0	0	0	0
<b>175</b>	0	0	0	0	0
<b>180</b>	0	0	0	0	0

**IES INDOOR REPORT**  
**PHOTOMETRIC FILENAME : LLI020716B.IES**

**ZONAL LUMEN SUMMARY**

Zone	Lumens	%Lamp	%Fixt
0-30	248.09	8.6	9.1
0-40	470.66	16.2	17.3
0-60	1044.37	36	38.5
0-90	2037.47	70.3	75
90-120	511.72	17.6	18.8
90-130	613.44	21.2	22.6
90-150	676.58	23.3	22.6
90-180	677.54	23.4	25
0-180	2715.01	93.6	100

Total Luminaire Efficiency = 93.6%

**ZONAL LUMEN SUMMARY**

Zone	Lumens
0-10	10.05
10-20	80.73
20-30	157.3
30-40	222.57
40-50	271.88
50-60	301.83
60-70	312.77
70-80	293.32
80-90	387.02
90-100	123.25
100-110	223.67
110-120	164.8
120-130	101.73
130-140	49.76
140-150	13.38
150-160	.96
160-170	0
170-180	0

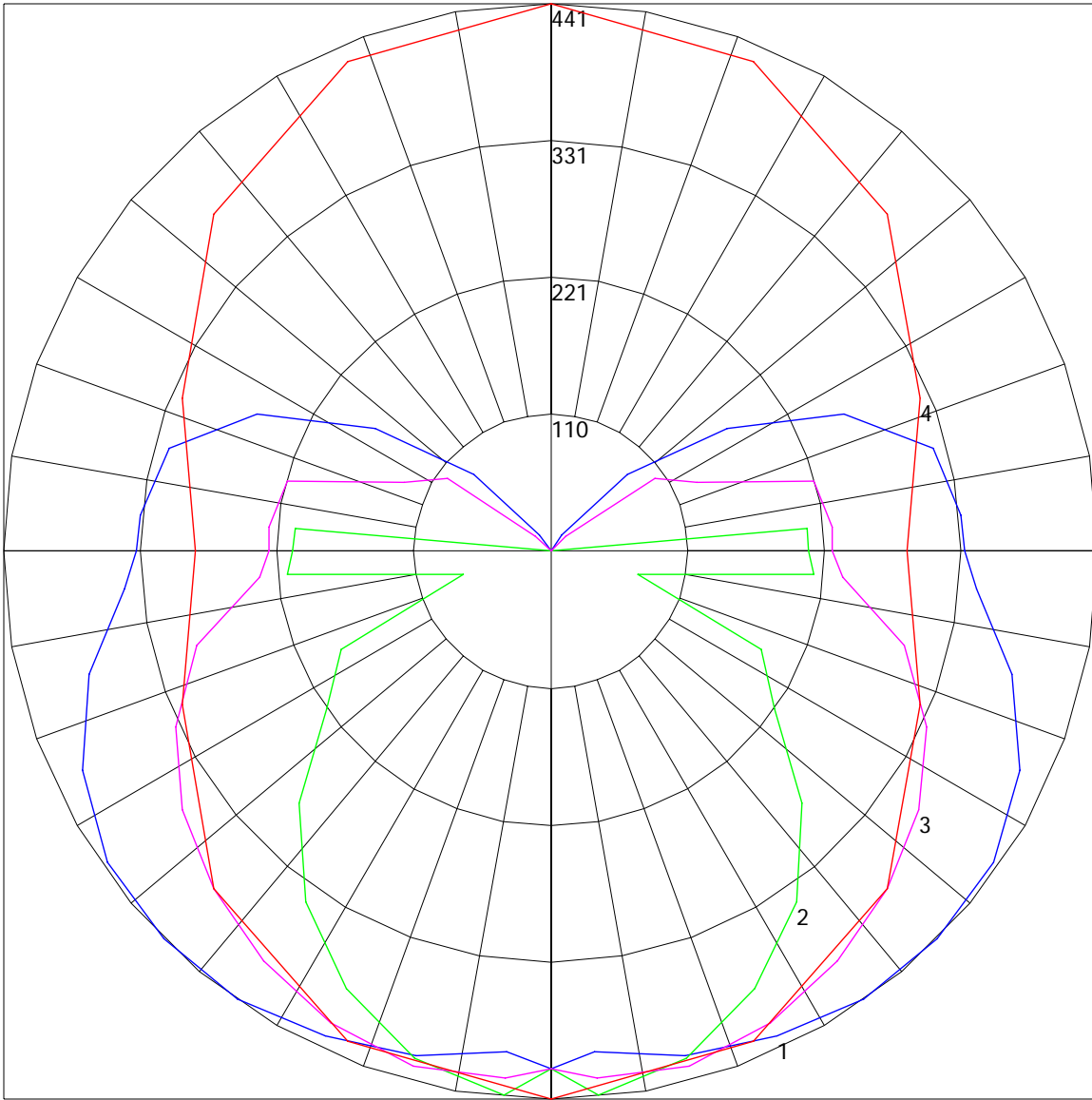
**IES INDOOR REPORT**  
**PHOTOMETRIC FILENAME : LLI020716B.IES**

**COEFFICIENTS OF UTILIZATION - ZONAL CAVITY METHOD**

Effective Floor Cavity Reflectance 0.20

RC RW	80				70				50			30			10			0
	70	50	30	10	70	50	30	10	50	30	10	50	30	10	50	30	10	0
0	106	106	106	106	101	101	101	101	91	91	91	82	82	82	74	74	74	70
1	91	84	78	72	85	79	74	69	71	66	62	63	60	56	56	53	51	47
2	81	70	62	55	76	66	59	52	59	53	48	52	47	43	46	42	39	35
3	72	60	51	43	68	57	48	42	51	44	38	45	39	34	39	35	31	27
4	65	52	43	35	61	49	41	34	44	37	31	39	33	28	34	29	25	22
5	60	46	36	29	56	43	35	28	39	31	26	34	28	23	30	25	21	18
6	55	41	32	25	51	39	30	24	35	27	22	31	24	20	27	22	18	15
7	50	37	28	21	47	35	26	20	31	24	19	28	21	17	24	19	15	13
8	47	33	24	19	44	31	23	18	28	21	16	25	19	15	22	17	13	11
9	43	30	22	16	41	28	21	16	26	19	14	23	17	13	20	15	12	10
10	40	27	20	14	38	26	19	14	23	17	13	21	15	11	19	14	10	8

POLAR GRAPH



Maximum Candela = 441 Located At Horizontal Angle = 90, Vertical Angle = 45  
# 1 - Vertical Plane Through Horizontal Angles (90 - 270) (Through Max. Cd.) : BLUE  
# 2 - Vertical Plane Through Horizontal Angles (0 - 180) : GREEN  
# 3 - Vertical Plane Through Horizontal Angles (45 - 225) : MAGENTA  
# 4 - Horizontal Cone Through Vertical Angle (45) (Through Max. Cd.) : RED