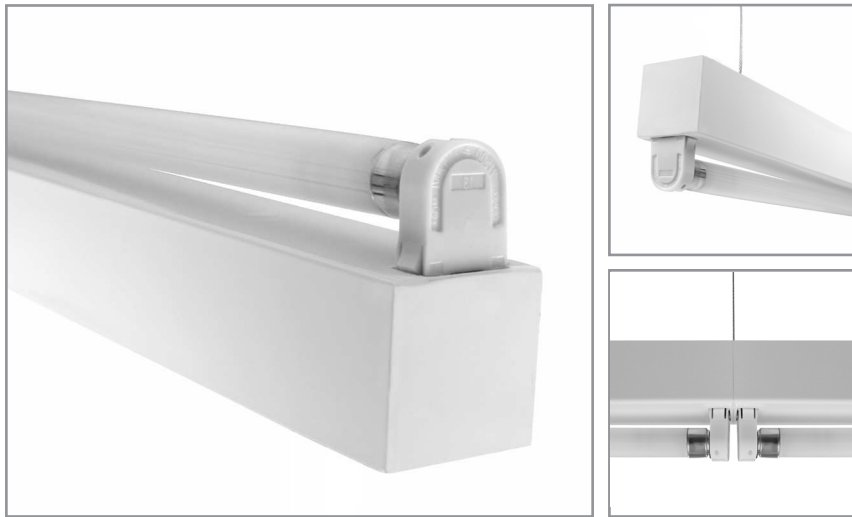


Linear T5 Clean Body fixture

Project: \_\_\_\_\_ Type: \_\_\_\_\_



### FEATURES

The CB5 luminaire features a bare, linear T5 lamp on a clean, sheet formed strip, with minimal exposed hardware. The low profile housing accommodates a wide variety of ballasts. Mounting variations include surface, cable suspension and pendant.

### SPECIFICATIONS

Fully assembled housing is formed and welded, 20 ga. steel, chemically treated to resist corrosion and enhance paint adhesion

Model variations offered for surface, cable suspended and pendant mount applications

Standard finishes include Fluoroscope White (semi-matte), white (semi-gloss), black, silver, platinum, bronze and primer powder coat, applied post production (consult factory for custom finishes)

An accessory symmetrical reflector in matching finish is available

Available for T5 14W, 21W, 28W, 35W and high output 24W, 39W, 54W, 80W lamps in single length, some tandem lengths and continuous runs

Standard ballast is specification grade 120V-277V program start (consult factory for other voltage options)

Dimming, emergency battery backup and specialized ballast factor options available (refer to supplemental ballast details sheet for availability)

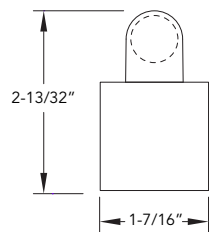
Knock outs on back of surface mount model accept standard electrical fittings by others (consult factory for other locations)

UL and C-UL listed for dry and damp locations

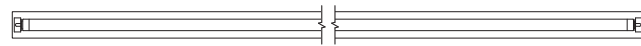
IBEW manufactured and assembled

Made in U.S.A.

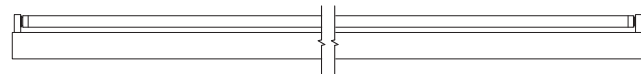
### PROFILE



### PLAN



### SIDE

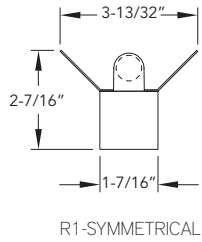


### CB5 +

| WATTS                                                                                                                                                                                                                                                                                  | VOLTAGE                                                                                                                                                                                                                                                                                                                                                                                                                               | BALLAST                                                                                                                                                                                                                                                                                                                               | MOUNT                                                                                                                                                                                                                                                                        | RUN CONFIGURATION                                            | FINISH                                                                                                                                                                      |
|----------------------------------------------------------------------------------------------------------------------------------------------------------------------------------------------------------------------------------------------------------------------------------------|---------------------------------------------------------------------------------------------------------------------------------------------------------------------------------------------------------------------------------------------------------------------------------------------------------------------------------------------------------------------------------------------------------------------------------------|---------------------------------------------------------------------------------------------------------------------------------------------------------------------------------------------------------------------------------------------------------------------------------------------------------------------------------------|------------------------------------------------------------------------------------------------------------------------------------------------------------------------------------------------------------------------------------------------------------------------------|--------------------------------------------------------------|-----------------------------------------------------------------------------------------------------------------------------------------------------------------------------|
| 14: 14W - 22-5/8"<br>21: 21W - 34-3/8"<br>28: 28W - 46-3/16"<br>35: 35W - 58"<br>24: 24W HO - 22-5/8"<br>39: 39W HO - 34-3/8"<br>54: 54W HO - 46-3/16"<br>80: 80W HO - 58"<br>2121: 2x21W - 68-3/4"<br>2828: 2x28W - 92-7/16"<br>3939: 2x39W HO - 68-3/4"<br>5454: 2x54W HO - 92-7/16" | U: 120V-277V<br>347: 347V<br>CF: consult factory for specialize voltage<br><br><b>[Non-Dimming]</b><br>PRS: program rapid start<br><b>[Dimming]</b><br>MKX: Advance Mark 10<br>VII: Advance Mark 7<br>ESYS: Lutron EcoSystem<br>EHD: Lutron EcoSystem H<br>HLM: Lutron Hi-Lume<br>H300: Lutron Hi-Lume 3D<br>PHO: Sylvania Helios<br>DALI: Dali T5 (consult factory)<br>SD95-50: Universal BallaSTAR<br>SD115-50: Universal BallaSTAR | <b>[Custom Performance]</b><br>PH: 1.15BF program start<br>PN85: 0.85BF program start<br>PN90: 0.90BF program start<br>PN95: 0.95BF program start<br><br><b>[Emergency]</b><br>L50: Bodine LP500<br>L55: Bodine LP550<br>L60: Bodine LP600<br>L60S: Bodine LP600STU<br>I28: Iota ISL-28<br>I54: Iota ISL-54<br>I540: Iota ISL-540-35W | SM: surface mount<br>CM48: cable mount<br>48" cable length<br>CM96: cable mount<br>96" cable length<br>PM18: pendant mount<br>18" stem length<br>PM24: pendant mount<br>24" stem length<br>PM30: pendant mount<br>30" stem length<br>CF: consult factory for custom mounting | SIN: single<br>STA: starter<br>ADD: adder<br>TER: terminator | FW: Fluoroscope white (semi-matte)<br>WH: white (semi-gloss)<br>BL: black<br>SL: silver<br>PT: platinum<br>BZ: bronze<br>PR: primer<br>CF: consult factory for custom color |

## ACCESSORIES

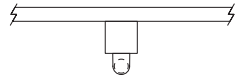
**REFLECTORS** | 20 ga. steel with white powder coat interior or .020" aluminum in specular (TR=95%) or semi-specular (TR=94%) interior finish



|     |   |                    |   |                                                                                                                                                                    |   |                                                                                           |   |                                                                                                                                                                                |
|-----|---|--------------------|---|--------------------------------------------------------------------------------------------------------------------------------------------------------------------|---|-------------------------------------------------------------------------------------------|---|--------------------------------------------------------------------------------------------------------------------------------------------------------------------------------|
| CB5 | + |                    | + |                                                                                                                                                                    | + |                                                                                           | + |                                                                                                                                                                                |
|     |   | REFLECTOR<br>STYLE |   | WATTS                                                                                                                                                              |   | INTERIOR<br>FINISH                                                                        |   | EXTERIOR<br>FINISH                                                                                                                                                             |
|     |   | R1-symmetrical     |   | 14: 14W<br>21: 21W<br>28: 28W<br>35: 35W<br>24: 24W HO<br>39: 39W HO<br>54: 54W HO<br>80: 80W HO<br>2121: 2x21W<br>2828: 2x28W<br>3939: 2x39W HO<br>5454: 2x54W HO |   | WH: white<br>A1: specular<br>A2: semi-specular<br>CF: consult factory<br>for custom color |   | FW: Fluoroscape white (semi-matte)<br>WH: white (semi-gloss)<br>BL: black<br>SL: silver<br>PT: platinum<br>BZ: bronze<br>PR: primer<br>CF: consult factory for<br>custom color |

## MOUNTING

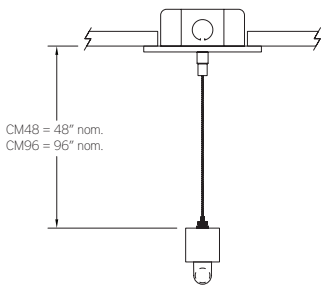
ORDERING CODE      DESCRIPTION



SM

SURFACE MOUNT

Use appropriate fastener through  $\varnothing 3/16$ " holes in housing

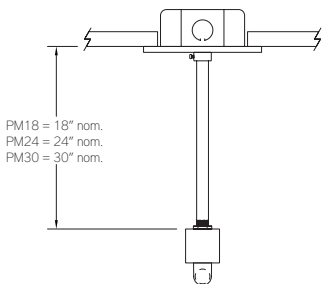


CM48 and CM96

CABLE MOUNT

Mounting option includes:

- $\varnothing 1/16$ " x 48" (CM48) or 96" (CM96) aircraft cables
- 18 gauge x 60" (CM48) or 102" (CM96) SJT power cable (in coordinating finish)
- Bracket bars
- $\varnothing 5$ " white power feed canopy
- $\varnothing 2$ " white canopy
- Ceiling couplers
- Low profile cable grippers



PM18, PM24, PM30

PENDANT MOUNT

Mounting option includes:

- $\varnothing 1/2$ " x 18" (PM18), 24" (PM24) or 30" (PM30) white steel stems
- Bracket bars
- $\varnothing 5$ " white canopies with integrated slip ring
- Hex nuts